

This is the first of two manuals required to complete this installation. The second manual is included with your side bars / running boards.

Level of Difficulty

Easy

Parts List

6	Mounting bracket
2	Rear mounting bracket
1	AC Mounting bracket
1	AC Top mounting bracket
2	T-bolt
6	U-bolt, 3.75"
18	Lock washer, 5/16"
10	Thread cutting bolt, 5/16"
2	Washer, 5/16"
16	Flange nut, M8
20	Hex bolt, M8
18	Clip nut, M8
12	Spacer
16	Bolt retainer

Tools Required

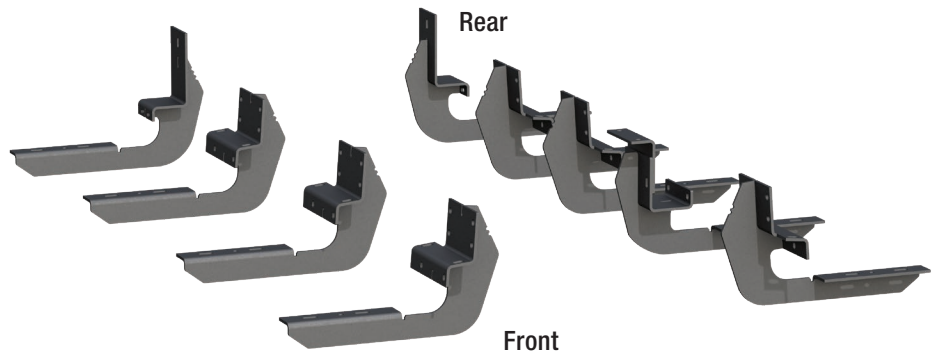
Socket, 1/2"	Ratchet
Wrench, 1/2"	Drill
Flathead screwdriver	Drill bit, 3/8"
Marker	Drill bit, 3/32"
Putty knife	Drill bit, 19/64"

Torque Specifications*

	Metric	SAE
	M6 bolt	3 ft.-lbs.
	M8 bolt	7 ft.-lbs.
	M10 bolt	16 ft.-lbs.
	M12 bolt	28 ft.-lbs.
	1/4" bolt	3 ft.-lbs.
	5/16" bolt	7 ft.-lbs.
	3/8" bolt	16 ft.-lbs.
	7/16" bolt	20 ft.-lbs.
	1/2" bolt	28 ft.-lbs.

*Above specifications are general guidelines. If purchasing hardware use the torque specifications provided with that hardware.

Product Photo



NOTICE

Before you begin installation, read all instructions thoroughly.

Proper tools will improve the quality of installation and reduce the time required.

To help prevent damage to the product or vehicle, refer to the specified torque specifications when securing hardware during the installation process.

Maintenance

To protect the product, wax after installing. Regular waxing is recommended to add a protective layer over the finish. Do not use any type of polish or wax that may contain abrasives that could damage the finish.

For polished, gloss and other smooth finishes, polish may be used to clear small scratches and scuffs on the finish.

Mild automotive detergent may be used to clean the product. Do not use dish detergent, abrasive cleaners, abrasive pads, wire brushes or other similar products that may damage the finish.

Product Registration and Warranty

CURT Group stands behind our products with industry-leading warranties.

Provide feedback and help us to improve our products by registering your purchase at: warranty.curtgroup.com/surveys

Step 1

Starting on the passenger side, locate the four mounting locations (See figures 1 and 2 on the last page of the manual).

Place each bracket in its mounting location and mark each hole on the rocker and pinch weld.

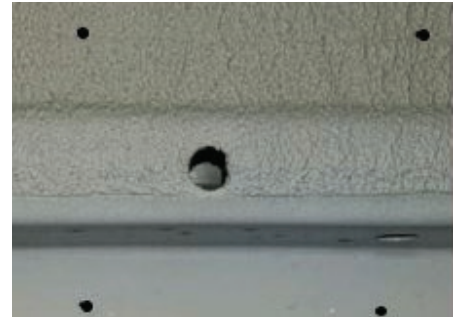
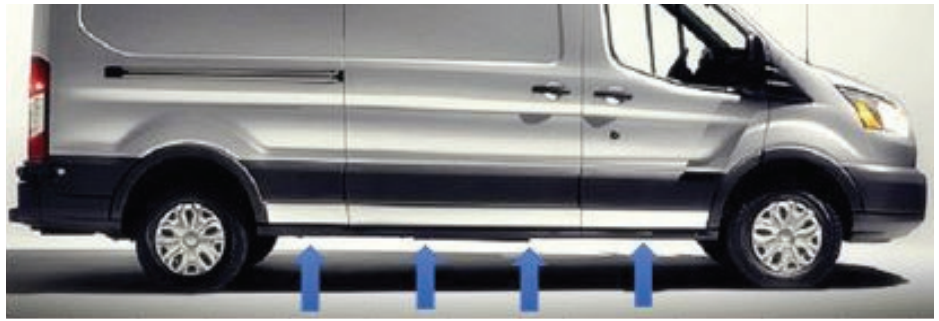
NOTICE

Vans will be configured in one of three ways.

If the van has both studs and non-threaded inserts, proceed to step 2.

If the van has studs and no inserts, proceed to step 3A.

If the van has no studs and no inserts, proceed to step 3B.



Step 2

From the underside of the plastic rocker molding, use a flathead screwdriver to release the bottom push pins.

NOTICE

Do not remove plastic trim completely. Only release the bottom push pins.



Step 3A: Vans with factory studs

Slide two black spacers on the factory studs. Place the front bracket on to the studs and secure with two M8 nuts, two 5/16" lock washers and two 5/16" thread cutting bolts into the factory holes on the bottom of the rocker.

Snug the hardware, but do not fully tighten.

Repeat for the second and third mounting locations.



Step 3B: Vans without factory studs and inserts

Locate the mounting location for the first bracket and mark the locations for each mounting hole. Using a 3/32" drill bit, drill a pilot hole in each of the marked spots, enlarge with a 3/8" drill bit.

Slide two M8 clip nuts over the lower set of holes in the pinch weld, and the 3.75" U-bolt through the upper set of drilled holes. Secure the U-bolt with the bolt retainers and slide two black spacers on the U-bolt followed by the mounting bracket. Secure the bracket with two M8 nuts on the studs, and two 5/16" lock washers and two M8 bolts in the clip nuts.

Snug the hardware, but do not fully tighten.

Repeat for the second and third mounting locations.



Step 4

Locate the fourth mounting location. Repeat step 3 to drill the lower mounting holes.

Insert the M8 T-bolt weldment into the factory slot and secure with a plastic retainer clip. Slide two M8 clip nuts over the two holes drilled into the pinch weld. Slide the rear mounting bracket over the T-bolt and secure with a M8 nut and two M8 bolts.

Snug the hardware, but do not fully tighten.

Repeat steps 1-4 on the driver side for the first, third, fourth and fifth mounting locations.



Step 5

On the driver side, assemble the AC bracket using two M8 bolts, two 5/16" washers and two M8 nuts.



Step 6

Insert the assembled AC bracket along the pinch seam. Mark each of the four hole locations.



Step 7

Drill the two upper holes with a 19/64" drill bit and the two bottom holes with a 3/8" drill bit.

NOTICE

The two upper holes will use self threading bolts.



Step 8

Slide two clip nuts over the bottom drilled holes. Secure the AC bracket to the bottom two holes using two M8 bolts and two 5/16" lock washers.

Secure the AC bracket to the two upper holes using clip nuts, two 5/16" thread cutting bolts and two 5/16" lock washers.

Snug the hardware, but do not fully tighten.

Note: To complete the installation, refer to the manual included with your running boards / side steps.



Figure 1

Passenger side shown

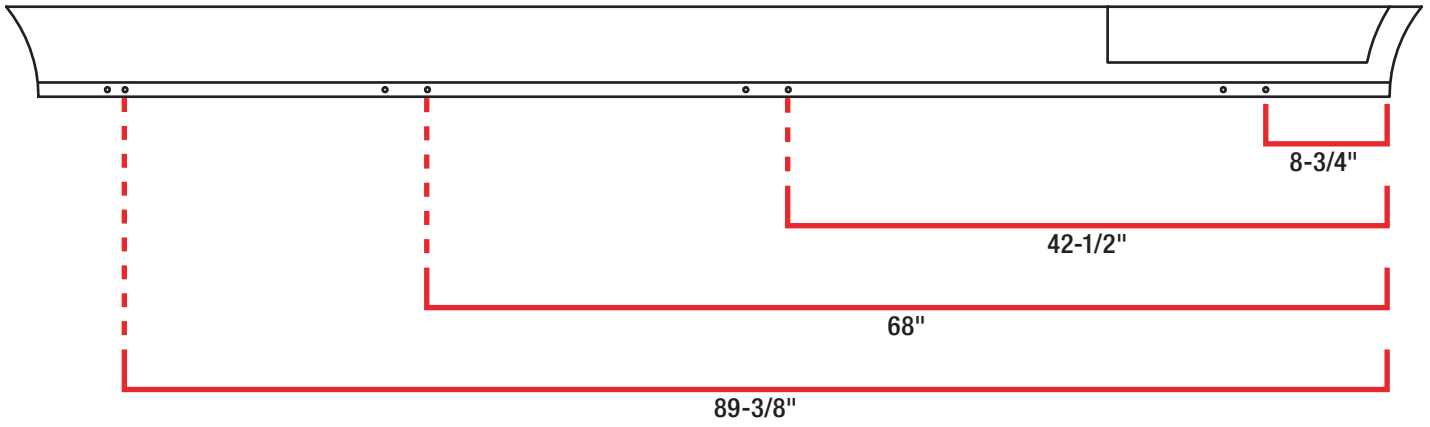


Figure 2

Driver side shown

