

RETROBRIGHT

Holley RetroBright LED Headlight (5.75")

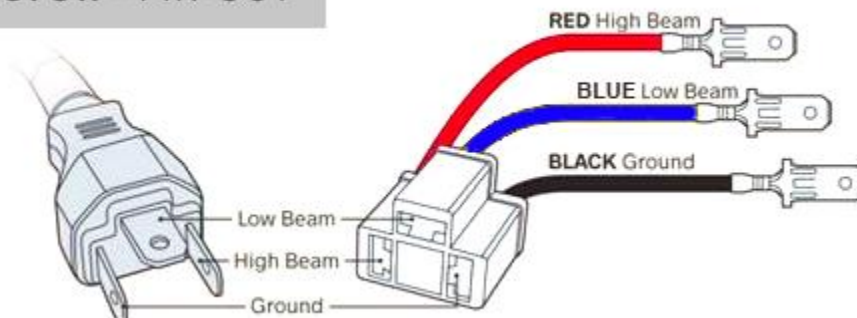
Part Numbers: LFRB105H, LFRB125H, LFRB145H

Holley RetroBright LED Headlights are direct replacements for traditional sealed beam headlights. Due to potential wiring changes made to the factory wiring pinouts in 5.75" round applications, as well as differences between high and low beam circuits/connectors, these part numbers may not work when plugged directly into the factory harness. A flying lead harness and unterminated male H4 connector have been included to make this installation as seamless as possible. They can also be used to replace worn or brittle factory connectors that may break upon removal of the current sealed beam bulb.

Professionals can remove the factory connector and position the wires to match. Use of the included harness or its parts are not mandatory and both scenarios will be covered in this document. Please read thoroughly.

***ALWAYS CHECK VEHICLE WIRING (ON BOTH THIS & 4" X 6" VERSION) TO CONFIRM CURRENT OR GROUND DUE TO POTENTIAL AFTERMARKET HARNESS VARIATIONS AND ANY CHANGES BETWEEN YEARS AND MANUFACTURERS. FAILURE TO DO SO COULD RESULT IN DAMAGE TO PRODUCT OR VEHICLE. DO NOT ASSUME THE FACTORY HARNESS IS CORRECT! IF YOU'RE UNSURE OF THIS PROCESS, PROFESSIONAL INSTALLATION IS RECOMMENDED.**

H4 CONNECTOR - PIN-OUT



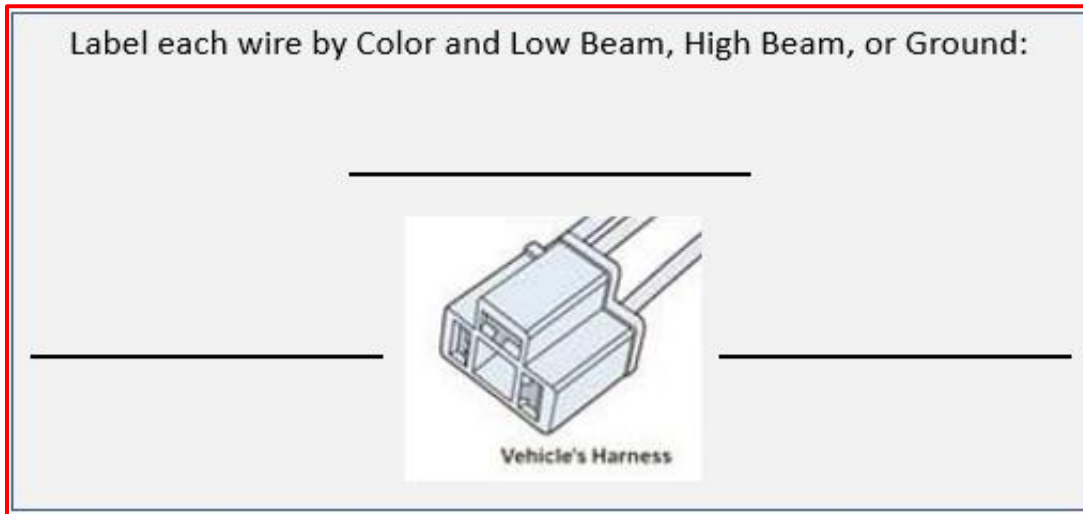
Parts List:

Qty	Description	Part Number
1	Holley RetroBright LED Headlight	LFRB105 or LFRB125 or LFRB145
1	H4 Flying Lead Adapter Harness	H820
1	H4 Unterminated Male Connector	RBEC120

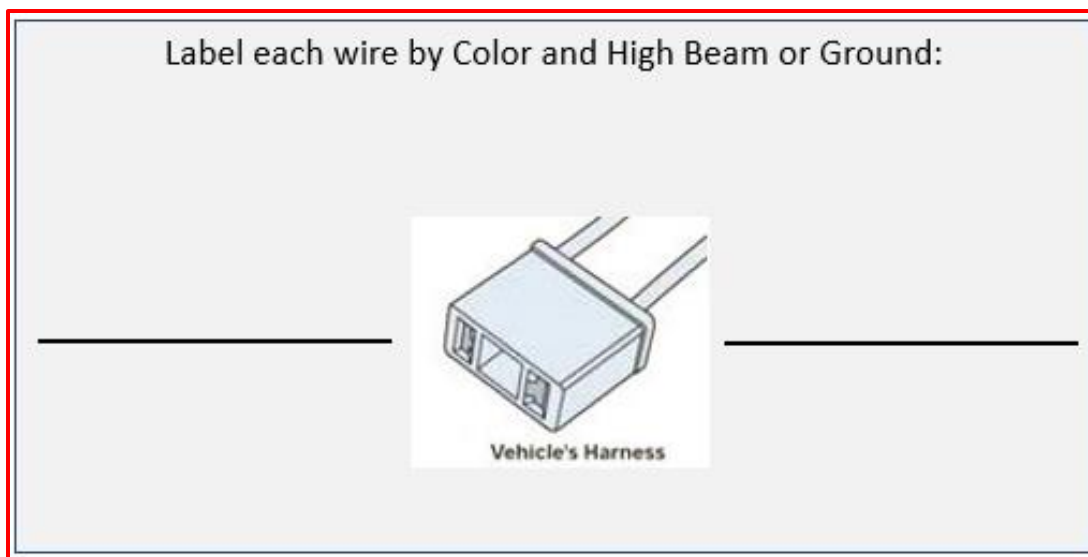
Installation Items/Tools: Screwdriver, circuit tester or multimeter, pin extractor (optional), dielectric grease, silicone/corrosion protection tape or heat shrink

DO NOT SKIP. Determine the corresponding wires on the vehicle harness with a circuit tester/multimeter to confirm which wires are low beam, high beam, and ground. **Write down** the data in the diagrams below or another paper and keep for reference. **DISCONNECT THE BATTERY.**

3 Terminal



2 Terminal



Now that you have recorded your vehicle's wire location and color above, determine which headlight type you will be replacing using the following table:

Headlight Type	Trade Number	Notes
1C1	H4001, H5001	2 Terminal – 4 Lamp Systems (High Only)
2C1	H4000, H4040, H5006	3 Terminal – 4 Lamp Systems (High/Low)

1C1 – If replacing a 1C1 headlight, determine if you will **a)** create an adapter harness using the included H820 harness and RBEC120 male connector (choose Scenario 1), or **b)** remove the factory connector and replace it with the orange/ceramic female connector on the H820 harness (choose Scenario 2).

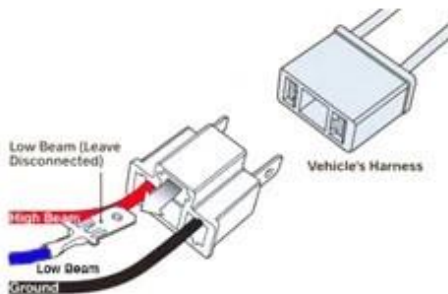
2C1 – If replacing a 2C1 headlight and the wiring aligns correctly, skip to step 3 in Scenario 1. You are ready to move forward and install without modification. If any wires do not align, choose a scenario below:

Scenario 1 – Use the included H820 harness and unterminated male connector (RBEC120) to create an adapter harness to connect your Holley RetroBright Headlight to your vehicle. It is unlikely to be needed with a 2C1 headlight (High/Low dual filament bulb). The low beam pin on the RetroBright plug will likely interfere with the connector on the high beam circuit. The harness is included if you prefer not to modify your factory connector.

Scenario 2 – Re-pin the factory vehicle connector or replace the factory vehicle connector with the orange/ceramic H4 female connector from the included H820 harness so that your Holley RetroBright Headlight will connect without the use of an adapter harness.

Scenario 1 – Use the included H820 harness and unterminated male connector (RBEC120) to make an adapter harness that connects your vehicle harness with the Holley RetroBright LED headlight. If you are replacing a 2C1 dual filament light, skip to that section on page 6. If you are replacing a 1C1 single filament light, start below:

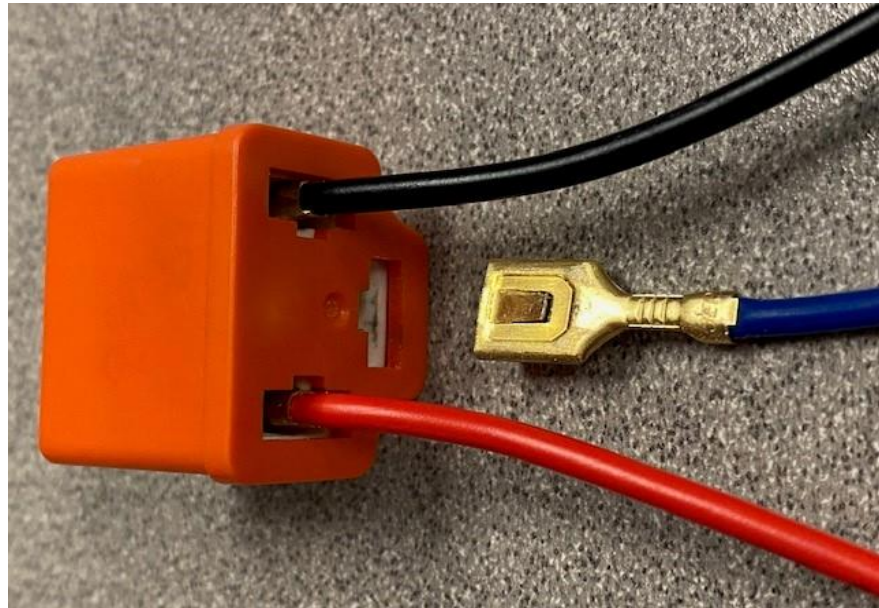
1C1 – H4001, H5001 – High Beam Only Applications (Single Filament)



This is the standard wiring scheme for H4001, H5001 trade numbers. This standard is high beam only with 2 wires so insert in whatever manner works best on your application. **You must confirm the adapter harness wires correspond to the proper wires on the vehicle side when connecting.**

***NOTE:** On the high beam circuit using a sealed beam bulb, the plug orientation does not matter. This is NOT the case with RetroBright LED bulbs. The wires **MUST** align properly.

- 1) Using a pin extractor tool or small flat screwdriver, remove the low beam (blue) Wire from the H820 harness **or** cut and cap it off even though it will not see current. To remove the wire:
 - a. Push the wire inward to relieve any pressure on the pin, then insert tool into the area shown below containing the low beam wire (blue).
 - b. Wiggle the tool gently up and down while simultaneously pushing inward to press the pin down. You may feel the tool you are using almost wedge itself in.
 - c. Apply slight pulling pressure to the wire from behind as you gently remove the tool and the lead should easily slide out.



Insert the pins into the included unterminated male connector (RBEC120). Be sure to insert the lead from the proper side (ridge around the edge and larger openings shown below). When inserting the pin, the Tab circled below **must** face inward towards the center of the connector to seat properly. Once seated, tug on each lead to confirm it has seated and does not back out.





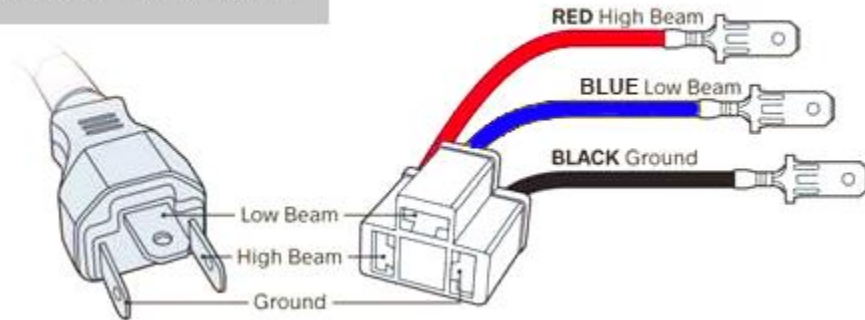
Example of completed adapter harness



Skip to Step 3 on following page.

2C1 – H4000, H4040, H5006 – High/Low Beam Applications (Dual Filament)

H4 CONNECTOR - PIN-OUT

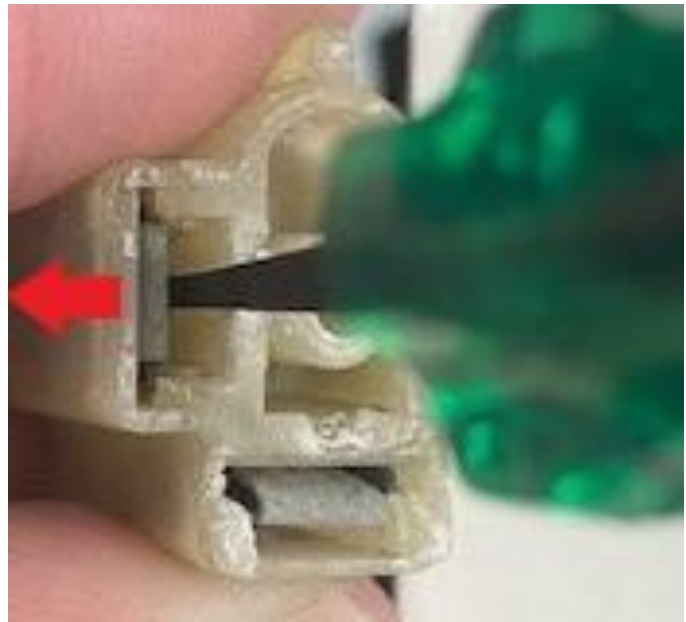
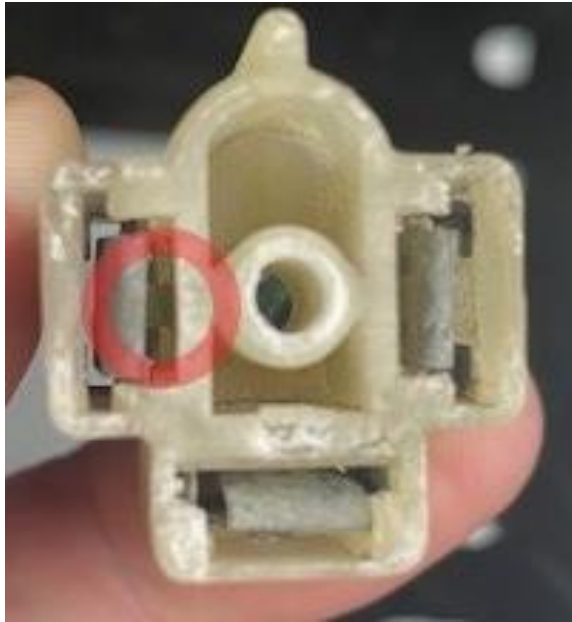


If your factory harness already lines up properly, skip to Step 3. In the event that your vehicle wiring does not line up with the RetroBright wiring shown above, use the included H820 harness and unterminated male connector (RBEC120) to assemble an adapter harness. Or, use the instructions in Scenario 2 to correct without building an adapter harness.

- 1) Using the diagram from Page 2, determine where the pins need to be inserted on the unterminated male connector (RBEC120).
- 2) Insert the metal pins from the H820 harness into the proper side of the RBEC120 connector (ridge around the edge and larger openings – see previous page). When inserting the pins, the raised tab **must** face inward towards the center of the connector to seat properly. Once seated, tug on each lead to confirm it has seated and does not back out.
- 3) Apply dielectric grease to connector or use corrosion protection tape/heat shrink to ensure a long-lasting, high quality connection.
- 4) Connect the Holley RetroBright plug to female side of H820 adapter harness (orange).
- 5) Connect the recently terminated male side of the adapter harness to the vehicle female harness.
- 6) Reconnect battery and test headlights for correct operation.
- 7) Install RetroBright Headlights in the reverse order the factory sealed beam headlights were removed. Always ensure headlights are aimed properly as outlined by the manufacturer. This process can usually be found in the vehicle owner's manual.
- 8) Enjoy twice the brightness of your traditional sealed beam headlights.

Scenario 2 – Re-pin the factory vehicle connector (or replace the factory vehicle connector with the orange/ceramic H4 female connector included in the H820 harness), so that your Holley RetroBright Headlight will connect without the use of an adapter harness.

- 1) Using a pin extractor tool or very small flat screwdriver, remove all wires from the factory connector (as seen on the following page):
 - a. Push inward from the back (wire side) to relieve any tension on the pin.
 - b. Insert tool into the area circled, apply pressure outward (in the direction of the arrow) to depress the pin, and gently pull the wire out.
 - c. If the wire does not easily slide out, remove the tool and try again making sure you are engaging the pin and that there is no tension on it before trying to depress and remove.



- 2) If reusing the factory connector, skip to Step 3. If it will be replaced with the included orange/ceramic connector on the H820 harness, see instructions above in Scenario 1 for wire removal. The procedure is identical to removing the factory connector shown directly above. However, due to a tighter fit, it may prove more difficult and the instructions there may provide the needed information for removal.
- 3) Once all wires have been removed, use the diagram that was filled out on Page 2 with wire colors and circuits to plug the leads into the proper locations that line up with the Holley RetroBright Headlight plug. Be sure to line up high beam to high beam, low beam to low beam (if utilizing for a dual filament application), and ground to ground.
- 4) Apply dielectric grease to connector or use corrosion protection tape/heat shrink to ensure a long-lasting, high quality connection.
- 5) Connect the Holley RetroBright plug to female side of H820 adapter harness (orange).
- 6) Connect the recently terminated male side of the adapter harness to the vehicle's female harness.
- 7) Reconnect battery and test headlights for correct operation.
- 8) Install RetroBright Headlights in the reverse order the factory sealed beam headlights were removed. Always ensure headlights are aimed properly as outlined by the manufacturer. This process can usually be found in the vehicle owner's manual.
- 9) Enjoy twice the brightness of your traditional sealed beam headlights.

© 2022 Holley Performance Products, Inc. All rights reserved. Tous Droits Réservés.

199R12350
Date: 1-13-22