

## *Sport Sway Bar Kit 22835*

### *91-99 BMW E36 M3*

*Thank you for your purchase from our new line of BMW parts.  
Please call us at 877 - 4NO - ROLL if you have any questions  
regarding the service or installation of your Hotchkis Performance products.*

## *Installation of Hotchkis Front Sway Bar*

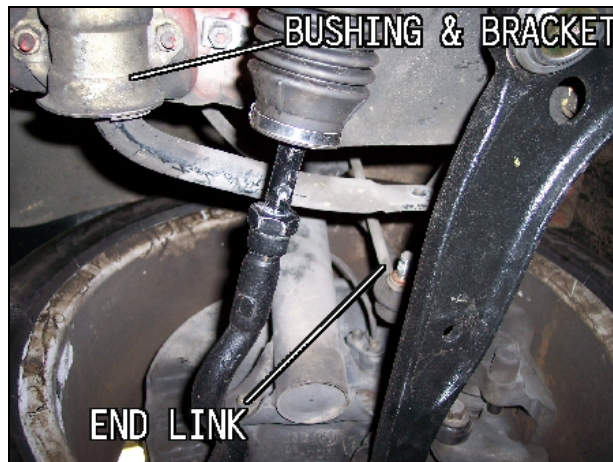
### 1F *Raising Vehicle*

Raise front of the vehicle by using a 4 post lift or drive-on ramps. Securely block the rear wheels of the vehicle. You do not have to remove the front wheels



### 2F *Remove OE Front Bar*

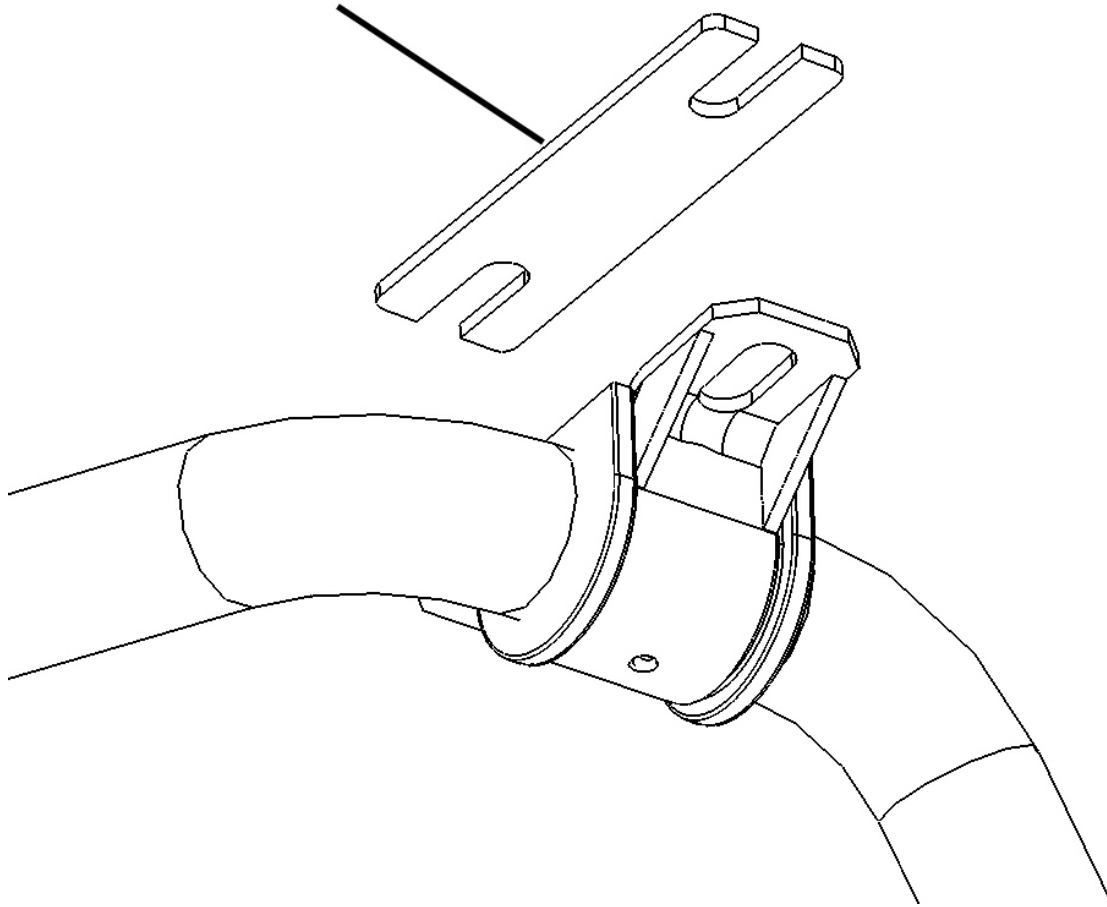
- Disconnect the sway bar end links from the sway bar ends.
- Undo the bushing brackets by unfastening the 2 nuts for each bracket
- Bar should be loose from the vehicle. Note the OE orientation for reference.



3F ***Reinstall the Hotchkis Front Bar***

Reinstall the Hotchkis Front sway bar in the same manner as removal. The Hotchkis front kit comes with new polyurethane bushings, bushing brackets and bushing spacer plates. The bushing spacer plates are used to create a flat surface for the new bushing to sit on properly.

INSERT SPACER BETWEEN BUSHING  
AND CAR MOUNTING POINT



Fully tighten all hardware and you are done with the front bar.

4F ***Sway Bar Stiffness***

300% Stiffer than Stock (hole near the end)

380% Stiffer than Stock (2<sup>nd</sup> hole)

If you would like to upgrade your front end links to our Fully Adjustable End Links, please order our kit #25828F

## *Installation of Hotchkis Rear Sway Bar*

### 1R ***Raising Vehicle***

Raise rear of the vehicle by using a 4 post lift or drive-on ramps. Securely block the front wheels. You do not have to remove the rear wheels.

### 2R ***Remove Stock Bar***

- a) Disconnect the sway bar end link clevis mount from the upper control arm
- b) Undo the bushing brackets by unfastening the 2 bolts for each bracket
- c) Undo the rear exhaust hangers to gain more clearance.
- d) Bar should be loose from the vehicle. Note the OE orientation for reference.



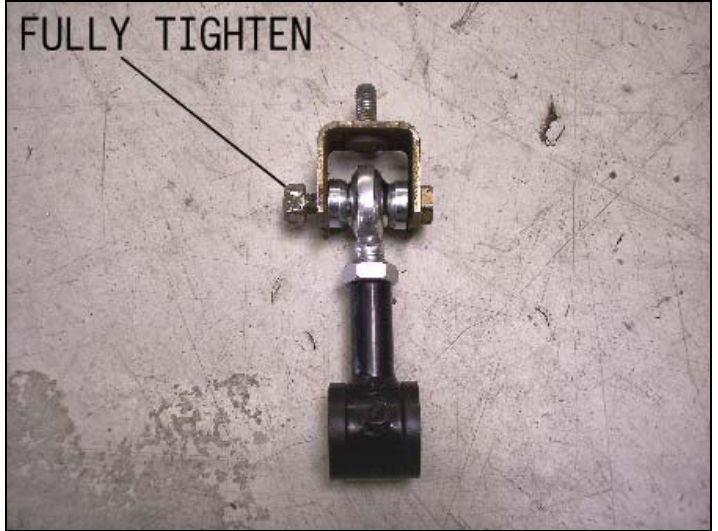
### 3R ***Remove the OE End Link Clevis Mount***

Your new Hotchkis kit includes new end links and hardware; however you will need to reuse the OE end link clevis mount.



4R ***Assemble New End Links***

With the new end links off the old bar, install the clevis brackets onto the Hotchkis end link as shown below. You will need to also reuse the OE bolt and nut. Fully tighten this hardware. Do not tighten the jam nut on the link itself just yet.



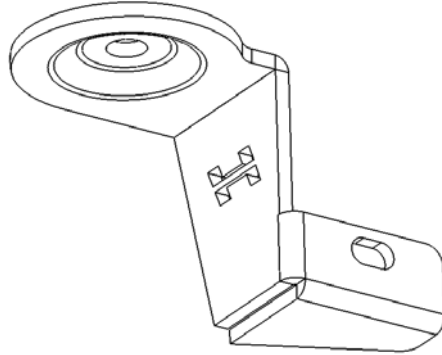
5R ***Install the End Link Assembly***

Install the end link assembly back onto the upper control arm.

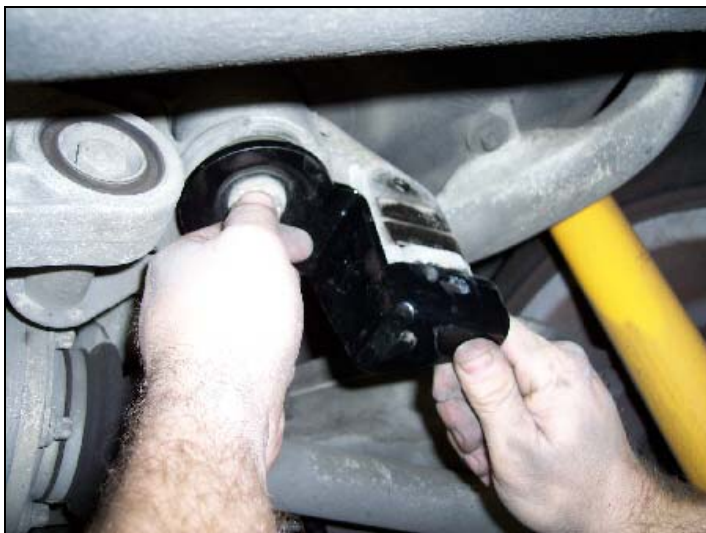
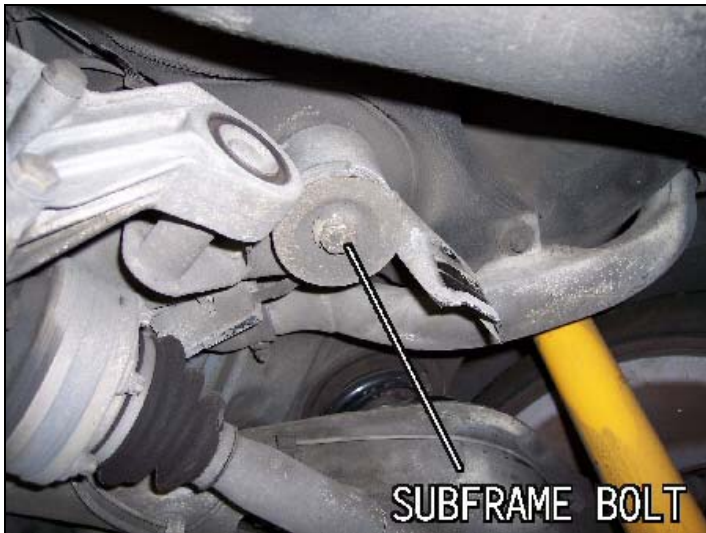


6R ***Install the Bushing Mount Reinforcement Bracket***

Due to the weak design of the BMW bushing mount, extra reinforcement is required. Your kit includes reinforcement brackets that attach to the subframe bolts.

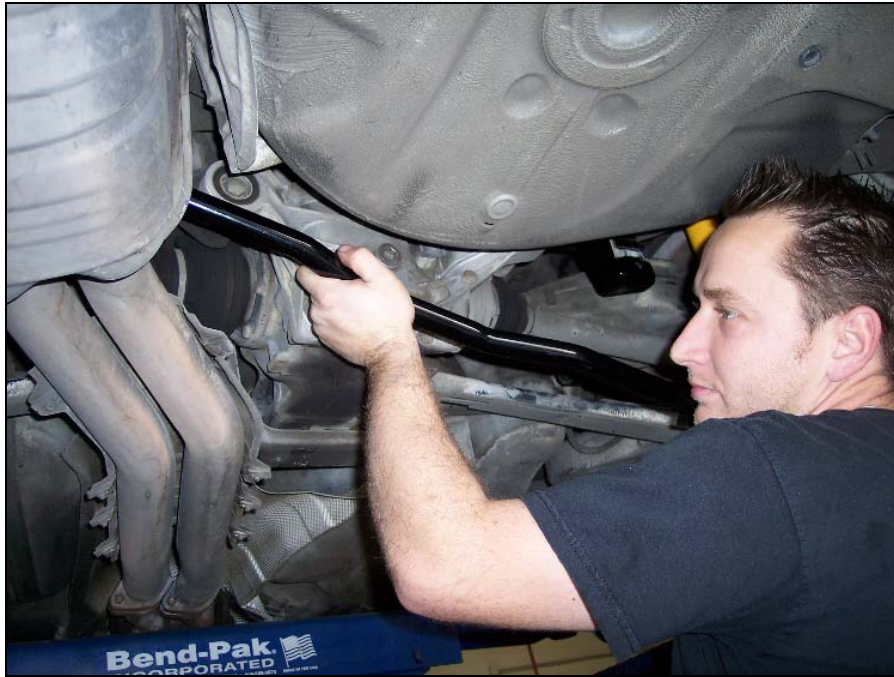


Undo the rearward subframe bolt (one at a time). You may discard the large washer. Install the correct side bracket onto the bolt and fasten it back into place.



7R ***Position the Sway Bar***

Insert and position the sway bar in the same manner as stock removal.



8R ***Install the Bushings***

Grease the inner surface of the bushings with the supplied lube. Open the bushing at the split and install onto the sway bar.



9R ***Position Bushing Bracket***

Push on the bushing bracket onto the 2 bushings. Do not fasten any hardware at this time.



10R ***Insert Spacer Shim***

When we installed the reinforcement bracket on the vehicle, the mounting surface of the original mount and the reinforcement bracket do not match. We provide a spacer shim to take up the difference. Insert the shim as shown below. There is one shim per side.



## 11R ***Install Bushing Bracket Hardware***

Install the bushing bracket hardware included in your kit. The bushing brackets have slots in them so you will notice that the bar can be shifted up or down slightly. Shift the bar up and tighten the bar at this position. If the bracket is positioned too low, it may come in contact with the exhaust pipes.



## 12R ***Securing End Links to Sway Bar***

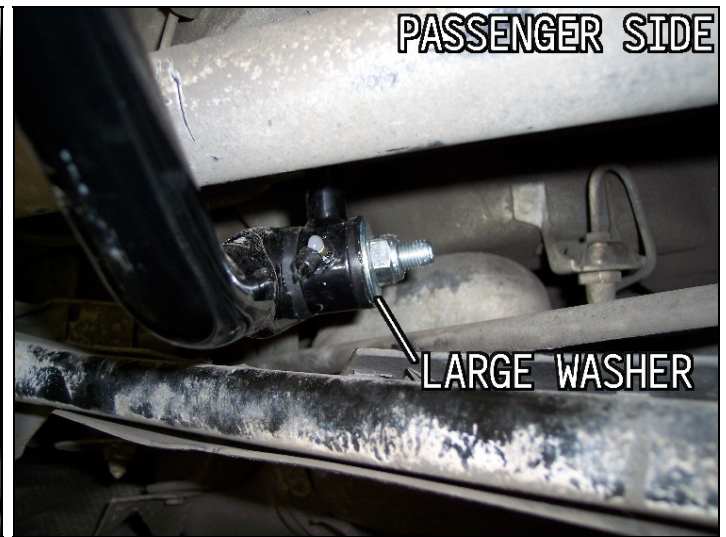
Before you attach your end links to the sway bar, we must first adjust the height for the end links. Since your ride height may be different than other E36's, end link adjustment will be mandatory. Rotate your sway bar into position so that the holes on the end match the hole in the end link; note the gap between the bar & the axle and the bar & the lower control arm. Thread the end link body in or out to adjust the length of the end link. Try to make the gaps above and below the sway bar to be the same.







Once the gaps are equalized, grease the end link bushings and fully tighten the hardware including the jam nut that fastens the heim joint to the end link body.



13R ***Finish Up***

Re-attach the exhaust and make sure everything else is fully tightened.



14R ***Stiffness Adjustment***

Your Hotchkis rear bar has 2 adjustment holes, which allow the customer to change the sway bar stiffness harder or softer. The hole closest to the sway bar end is the softer setting, while the hole furthest from the end is the stiffest. The stiffness increase compared the stock bar is as follows:

Soft Setting: 115% Stiffer than Stock

Stiff Setting: 140% Stiffer than Stock



## Hotchkis Performance LLC Return Policy & Limited Warranty

Effective January 1, 2009 all Hotchkis products must be registered to qualify for warranty at [www.hotchkis.net](http://www.hotchkis.net) or via the mail-in warranty card, included with the product, within 30 days of the original purchase date.

### Return Policy

We want you to be completely satisfied with your Hotchkis Performance product. For products, presenting signs of shipping damage please contact the freight carrier immediately. All our products are guaranteed to be free from manufacturer's defects. If your order arrives with a manufacture defect, please contact our Customer Service Department at (562) 907-7757. You will be assigned a Returned Goods Authorization Number (RGA). The package you return must show the RGA on the outside of the package, include the original invoice and be shipped prepaid to our facility. The product has to be unused and in its original packaging materials. Exchanges or refunds made after 30 days will be subject to a 20% restocking charge. **If you purchased your Hotchkis Performance product from an authorized dealer, you are still covered by this return policy. All returns however, should be made to your dealer, not to Hotchkis Performance directly.**

### Limited Warranty

Hotchkis Performance offers a Limited Warranty against defects in materials and workmanship of its products. This Warranty only applies to the original retail purchaser who retains ownership of the vehicle on which the product was originally installed. If the product is determined to be defective, Hotchkis Performance will repair, replace or refund the purchase price of the defective product at Hotchkis Performance's sole discretion, which shall fully satisfy and discharge any and all warranty claims. Any repaired or replaced product will be returned to the sender excluding the cost of freight.

**Products must be registered to qualify for warranty at [www.hotchkis.net](http://www.hotchkis.net) or via the mail-in warranty card, included with the product, within 30 days of the original purchase date.**

### Exclusions from Warranty

Items offered but not manufactured by Hotchkis Performance are warranted according to the manufacturer's terms and are not covered by this limited warranty. Hotchkis Performance shall not be responsible for any labor, removal, installation, re-installation or maintenance costs. This warranty does not cover the cosmetic finish or plating of any product or any normal wear and tear to any product including, but not limited to bushings, brackets, end-links, hardware, steering components, shocks or springs. In addition, this warranty does not apply to any products that have been:

- Improperly installed or installed by someone other than a qualified, licensed auto mechanic experienced in the installation and removal of suspension products;
- Improperly serviced, misused, or modified, altered or subjected to abuse, negligence, accident or collision;
- Installed in any vehicle that has been modified;
- Installed on any vehicle that has carried loads in excess of automobile manufacturer suggested weight limits; or
- Installed on any vehicle that has been subject to abnormal or excessive use, including rallying, racing, or racing-type activities or off-road use.

### Limitation of Warranty

This limited warranty is the entire and only warranty for the products and may not be modified or supplemented by any other person or company in any form. Any description of the products, by anyone, is for the sole purpose of identifying them and is not part of the basis of the bargain, and does not constitute a warranty that the products will conform to that description. The statements of any salesperson do not constitute part of this limited warranty and cannot be relied upon as a warranty.

**THERE ARE NO WARRANTIES, EXPRESSED OR IMPLIED, INCLUDING ANY IMPLIED WARRANTIES OF MERCHANTABILITY OR FITNESS FOR A PARTICULAR PURPOSE, WHICH EXTEND BEYOND THE DESCRIPTION ON THE FACE HEREOF. ANY IMPLIED WARRANTIES ARE DISCLAIMED TO THE FULLEST EXTENT PERMITTED BY LAW. THIS WARRANTY DOES NOT COVER CONSEQUENTIAL DAMAGES, LOSS OF TIME OR REVENUES, INCONVENIENCE, LOSS**



**OF USE OF THE VEHICLE, DAMAGE TO THE VEHICLE OR COMPONENTS OF THE VEHICLE, ANY OTHER TYPE OF CONSEQUENTIAL DAMAGES, OR OTHER INCIDENTAL OR INDIRECT DAMAGES. HOTCHKIS' MAXIMUM LIABILITY UNDER THIS WARRANTY SHALL IN NO EVENT EXCEED THE PURCHASE PRICE OF THE PRODUCT.** Some states do not allow limitations on how long an implied warranty lasts or the exclusion or limitation of incidental or consequential damages and in such states the above limitations or exclusions may not apply. This limited warranty gives the purchaser specific legal rights and the purchaser may have other rights that may vary from state to state.

#### **Technical Information**

Hotchkis Performance makes every effort to ensure that you are provided with the most accurate and up-to-date technical information. However, all technical information is approximate and may vary upon application. Additional suspension components may be needed in some applications, depending upon the make, model, engine and chassis of the vehicle. Hotchkis Performance is not responsible for any consequences resulting from manufacturer's technical mid-year changes. Hotchkis Performance products should only be installed by a qualified, licensed auto mechanic experienced in the installation of such products.

#### **Warranty Claim Procedure:**

The answer to ALL the following questions should be YES before making a warranty claim:

- Did you register the product at [www.hotchkis.net](http://www.hotchkis.net) or via the mail-in warranty card within 30 days of purchase?
- Is the product appropriate to your application?
- Did you carefully and thoroughly read the instructions provided along with the product?
- Do you have the original invoice or sales receipt?
- Are you the original purchaser?
- Was the product properly installed by a qualified, licensed auto mechanic?
- Has the product been installed on the original vehicle on which it was installed at all times?
- Is the product unmodified and clean?
- Is the reason for return a legitimate product defect?

If the answer to all these questions is YES, please contact our Customer Service Department at (562) 907-7757. You will be given a Returned Goods Authorization Number (RGA) valid for 60 days. You will also be asked to ship the product prepaid to our facility. All shipments MUST be (i) prepaid, (ii) include the original invoice or sales receipt, (iii) show the RGA on the outside of the package and (iv) include your name, address, make and model of the vehicle, and a brief description of the claimed defect, including the circumstances under which the defect occurred. If the warranty claim is deemed valid then Hotchkis will estimate shipping costs to return the repaired or replacement part and contact you for payment. Hotchkis's Limited warranty requires that any repaired or replaced product will be returned to the sender excluding the cost of freight. Warranty related inquires should be sent to the following address:

**HOTCHKIS PERFORMANCE, LLC  
C/O CUSTOMER SERVICE  
12035 BURKE ST. SUITE 13  
SANTA FE SPRINGS, CA 90670**

Hotchkis Performance will not accept product returns without the RGA number, receipt and the information described above. C.O.D. or collect shipments will be refused. Once the returns are received at Hotchkis Performance, we will evaluate the products, verify the sales receipt, and investigate the warranty claim. Any repaired or replaced product will be returned to the sender.

**Effective January 1, 2009. This return policy and limited warranty supersedes all previous policy and warranty statements. Policies and warranties are subject to change without notice. Hotchkis Performance is not responsible for printing errors.**