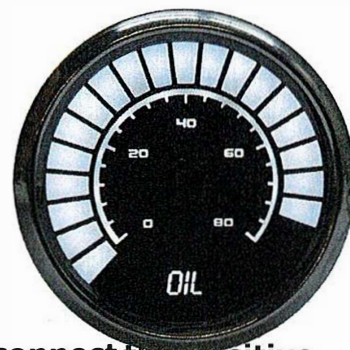


Installation Instructions for 41486, 41502, 41503, 41504, 41505 LED Analog Bargraph Oil Pressure Gauge

DESCRIPTION AND FEATURES

The LED Analog Bargraph Oil Pressure Gauge is compatible with any vehicle that fits the associated 0-100- psi sender.



Kit Components

One (1) 41486 Bargraph Oil Pressure Gauge

NOTE: Before beginning the installation of this gauge please disconnect the positive battery cable from your vehicle and read all of the instructions completely!

Installation:

- Connect the **BLACK** ground wire directly to the engine block. Proper vehicle grounding is extremely important for any gauges (or electronics) to operate correctly. The engine block should have heavy ground cables to the battery, frame, and firewall. Failure to establish a proper ground may cause incorrect or erratic operation. For the most accurate reading, connect the gauge ground wire to the same location as the sending unit ground.
- Connect the **RED** wire to a switched +12 volt source such as ignition switch.
- Connect the **PURPLE** wire to the parking light switch to dim the LEDs 50% when the headlights are on. However, **do not** connect to the dash light dimming rheo-stat control wire – the dimming feature will not work properly. Connect the PUR-PLE wire to ground for permanent, maximum brightness.
- Connect the **ORANGE** wire to the oil pressure sending unit. Do **not** use Teflon tape or any other thread adhesive as this will interrupt the grounding of the unit with the engine block. The sending unit is NPT standard which due to a slight ta-per will tighten and seal itself. Be sure the threads between sender and engine are clean. Check all fittings and connections for leaks. If any leaks are detected, determine the cause and repair immediately!
- **Warning! Do not operate the vehicle if any leaks are detected!**



1-800-345-4545 jeps.com