



Pneumatic Brake Bleeder Kit

555-63208

User Manual



Please read and understand all instructions before use. Retain this manual for future reference.

Pneumatic Brake Bleeder Kit

SPECIFICATIONS

Material	Silicone Hose, Rubber Adapter
Average Air Consumption	2 CFM
Working Pressure	40 to 170 PSI
Air Inlet	1/4 in. NPT
Temperature Range	-19°C to 60°C (-2.2°F to 140°F)
Capacity	2 litre
Silicone Hose	3.3 ft.

IMPORTANT SAFETY PRECAUTIONS

WARNING! Read and understand all instructions before using this tool. The operator must follow basic precautions to reduce the risk of personal injury and / or damage to the equipment. Before allowing someone else to use this tool, make sure they are aware of all safety information.

WARNING! The warnings, cautions and instructions discussed in this instruction manual cannot cover all possible conditions and situations that may occur. Common sense and caution are factors that cannot be built into this product, but must be supplied by the operator.

NOTE: Keep this manual for the safety warnings, precautions and operating, inspection and maintenance instructions. When this manual refers to a part number, it refers to the included parts list.

WORK AREA

1. Operate in a safe work environment. Keep your work area clean and well lit.
2. Keep anyone not wearing the appropriate safety equipment away from the work area.

NOTE: Minimize distractions in the work environment. Distractions can cause you to lose control of the tool.

3. Always lock up tools and keep them out of the reach of children.

PERSONAL SAFETY

CAUTION! Wear protective equipment approved by the Canadian Standards Association (CSA) or American National Standards Institute (ANSI) when using the tool.

1. Dress properly, wear protective equipment. Use breathing, ear, eye, face, foot, hand and head protection. Always wear ANSI approved impact safety goggles, which must provide both frontal and side protection. Protect your hands with suitable gloves. Protect your head from falling objects by wearing a hard hat. Wear an ANSI approved dust mask or respirator when working around metal, wood and chemical dusts and mists. Wear ANSI approved earplugs. Protective, electrically non-conductive clothes and non-skid footwear are recommended when working. Wear steel-toed boots to prevent injury from falling objects.
2. Control the tool, personal movement and the work environment to avoid personal injury or damage to the tool. Stay alert, watch what you are doing and use your common sense.
 - a. Keep articles of clothing, jewelry, hair, etc., away from moving parts to avoid entanglement.
 - b. Do not operate any machine / tool when tired or under the influence of drugs, alcohol or medications.
 - c. Do not overreach when operating a tool. Proper footing and balance enables better control of a tool in unexpected situations.

SPECIFIC SAFETY PRECAUTIONS

1. Always ensure that the gear transmission is in Park, the wheels are blocked and the parking brake is engaged.

NOTE: For manual transmissions, refer to your owner's manual for proper parking instructions.

2. Always wear eye protection use protective gloves when using the tool.
3. Always keep a dry chemical (Class B) fire extinguisher on hand.
4. Exercise extreme caution around hot or moving components.
5. Do not smoke or have any ignition source around fuel components or the vehicle's battery.
6. Always operate the vehicle in a well-ventilated area, as exhaust gasses are highly toxic.
7. Switch the ignition OFF before disconnecting any connections.

TOOL USE AND CARE

1. Use the correct tool for the job. Maximize tool performance and safety by using the tool for its intended task.
2. Do not modify this tool or use for a purpose for which it was not designed.
3. This tool was designed for a specific function.

Do Not:

 - a. Modify or alter the tool; all parts and accessories are designed with built-in safety features that may be compromised if altered.
 - b. Use the tool in a way for which it was not designed.

Pneumatic Brake Bleeder Kit

UNPACKING

1. Carefully remove the tool from the package.
 - a. Retain packing material until you have carefully inspected and satisfactorily installed or operated the tool.
2. Make sure that all items in the parts list are included.
3. Inspect the parts carefully to make sure the tool was not damaged while shipping.

OPERATION

1. Pour brake fluid into the reservoir tank "A". See figure 1.
2. Turn the tank "A" upside-down and connect the master cylinder. See figure 2.

NOTE: Make sure that the valve of tank "A" is in the closed position.

3. Connect the bleeder fitting to the brake fluid extractor of tank "B".
4. Making sure that the connection is tight; open the air valve of tank "B" to create a vacuum to begin bleeding fluid.
5. Watch the fluid level in the fluid reservoir of the vehicle. When the fluid level is getting low, incrementally, open the valve of tank "A" to replace the fluid in the reservoir taking care not to overfill, and close the valve on tank "A" when the reservoir has been topped up. See figure 3.

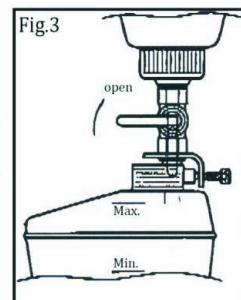
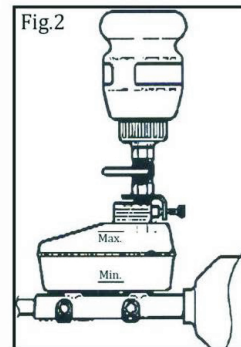
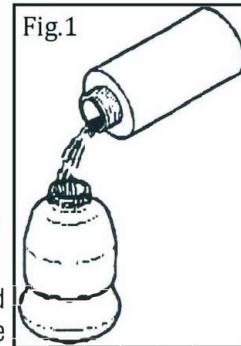
CAUTION! Do not allow the reservoir to be bled dry. This can cause air to get into the brake lines.

NOTE: Check the reservoir when bleeding each brake. The brakes at the back of the vehicle will require the vehicle's fluid reservoir to be topped up in order to fully vacuum the fluid from the back of the vehicle.

MAINTENANCE

1. Maintain the tool with care. A tool in good condition is efficient, easier to control and will prevent unnecessary problems.
2. Keep the tool handles clean, dry and free from oil and grease at all times.
3. Inspect the tool's fittings, alignment, hoses and components periodically. Have damaged or worn components repaired or replaced.
4. Maintain the tool's label and nameplate. These carry important information. If the label or nameplate is unreadable or missing contact Princess Auto Ltd. for replacements.

CAUTION! Only qualified service personnel should repair the tool.



Pneumatic Brake Bleeder Kit

DISPOSING OF THE TOOL

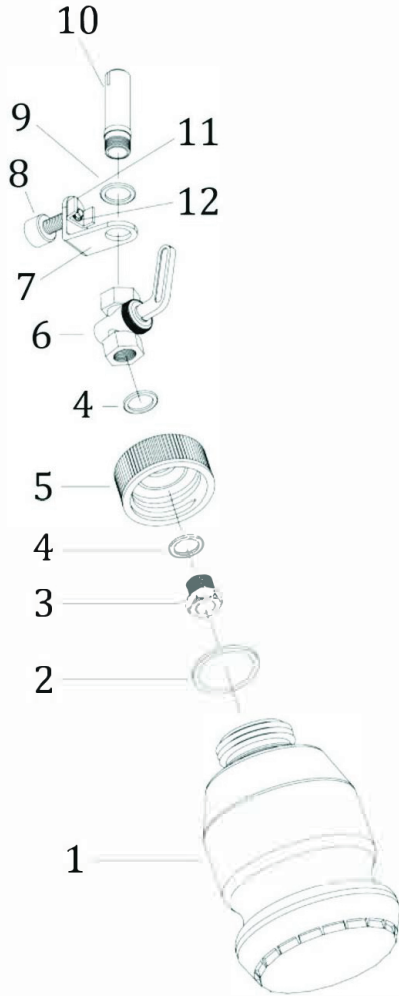
If your tool has become damaged beyond repair, do not throw it away. Bring it to the appropriate recycling facility.

TROUBLE SHOOTING

Problem(s)	Possible Cause(s)	Suggested Solution(s)
The tool will not shut off.	O-rings throttle valve is dislodged from the seat inlet valve.	Have a qualified service technician replace the O-ring.
Loss of power or erratic performance.	Excessive drain on the air line. Moisture or restriction in the air line. Incorrect size or type of hose connectors.	Check the air supply. If the tool is not connected to a 1/4 in. line, connect it properly.

Pneumatic Brake Bleeder Kit

PARTS BREAKDOWN

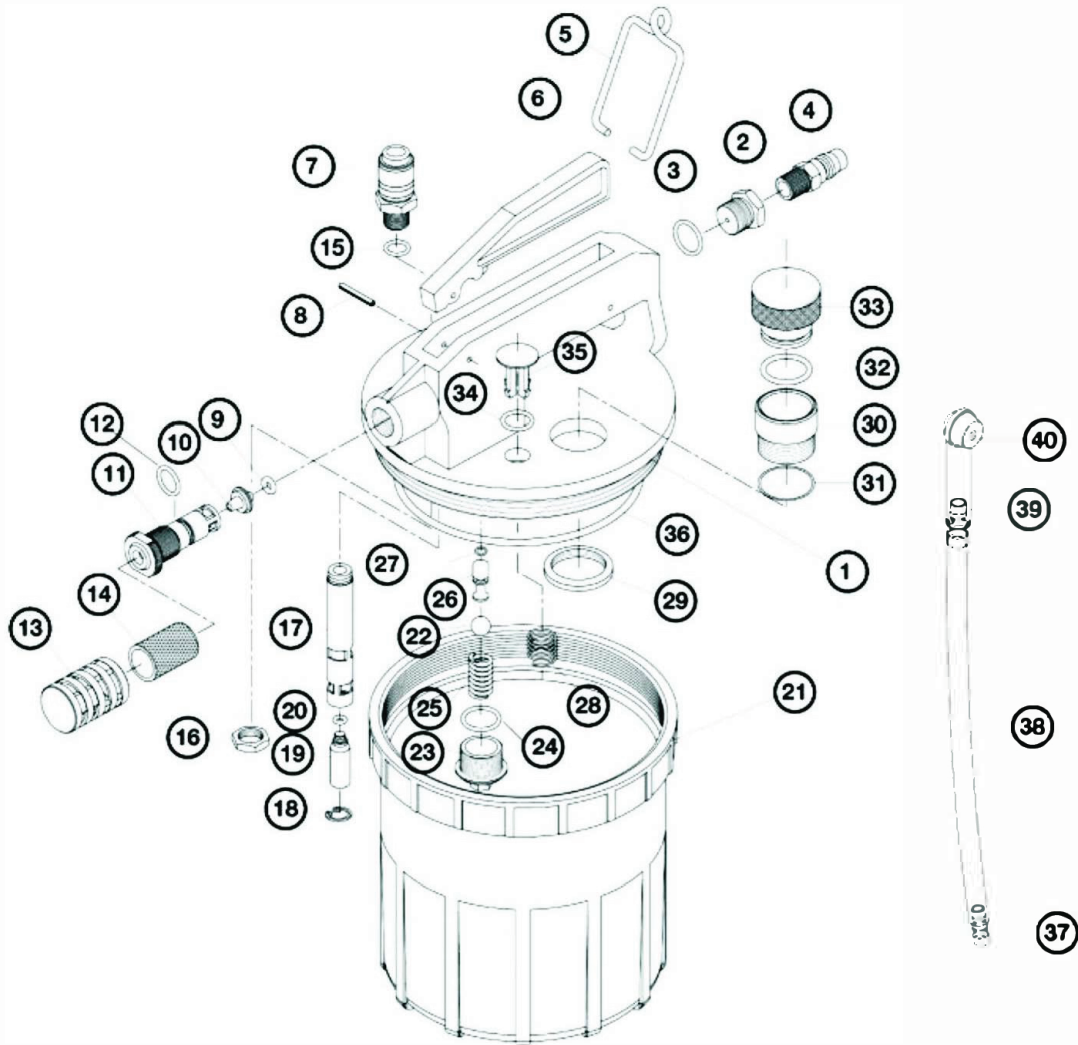


BRAKE FLUID RESERVOIR TANK A PARTS LIST

No.	Description	No.	Description
1	Tank	7	Swivel Clamp
2	Gasket	8	Adjustment Screw
3	Screw	9	Washer
4	Washer	10	Oil Outlet Screw
5	Cover Housing	11	Washer
6	Valve	12	C Lock

Pneumatic Brake Bleeder Kit

PARTS BREAKDOWN



Pneumatic Brake Bleeder Kit

BRAKE FLUID EXTRACTOR TANK B PARTS LIST

No.	Description	No.	Description
1	Cover Housing	21	Tank
2	Inlet Nut	22	Steel Ball
3	O-Ring	23	Locking Screw
4	Air Inlet Coupler	24	O-Ring
5	Fixing Ring	25	Spring
6	Trigger	26	Valve
7	Fluid Inlet Coupler	27	O-Ring
8	Pin	28	Spring
9	O-Ring	29	Lock Nut
10	Vacuum Valve	30	Oil Outlet Housing
11	Vacuum Body	31	O-Ring
12	O-Ring	32	O-Ring
13	Noise-Reduction Cover	33	Oil Outlet Cover
14	Noise-Reduction Net	34	O-Ring
15	O-Ring	35	Safety Valve
16	Lock Nut	36	O-Ring
17	Safety Valve	37	Coupler
18	C-Clip	38	Silicon Hose
19	Safety Cup	39	Adapter
20	O-Ring	40	Brake Coupler