

# Installation Instructions for 79000 2-Ton Hydraulic Jack



SPECIFICATIONS	Capacity (Ton)	Lift Range
	2	5-1/8" to 13"

## Owner and/or Operator Responsibility

The owner and/or operator shall read, study and understand the product instructions and retain them for future reference.

## Operation

The owner and/or operator shall have an understanding of the product and safety operating instructions before operating the product. Safety information shall be emphasized and understood. If the operator is not fluent in English, the product warnings/cautions and instructions shall be read to and discussed with the operator in operator's native language by purchaser/owner or his designee, insuring that the operator comprehends their content.

## Inspection

- Visual inspection **MUST** be made prior to each use of the jack. Check for cracks, cracked welds, missing or damaged parts.
- Keep all moving parts clean and well lubricated.
- Owners and/or operators should be aware that repair of this equipment may require specialized knowledge and facilities. It is recommended that an annual inspection of the product be made by a manufacturer or supplier's authorized repair facility and that any defective parts, decals, or safety labels and signs be replaced with manufacturer or supplier's specified parts.

## Damaged Equipment

Any jack that appears to be damaged in any way or is found to be worn or operates abnormally **SHALL BE REMOVED FROM SERVICE IMMEDIATELY UNTIL REPAIRED**. It is recommended that a manufacturer or supplier's authorized repair facility make necessary repairs if the manufacturer or supplier permits repairs

## Alterations

Because of potential hazards associated with the misuse of equipment of this type, **NO MODIFICATIONS/ALTERATIONS** shall be made to the product.

## Attachments and Adaptors

Only attachments and/or adaptors supplied by the manufacturer shall be used.

- Read, study and understand all instructions before operating this device.
- Do not exceed rated capacity. Over-loading may cause damage to/or failure of the jack.
- Always use only on hard, level surface. Do not use equipment on slopes or angles.
- Lifting device only. Jack must not be used as a jack stand to hold loads for prolonged periods of time.
- Immediately after lifting, support the vehicle with appropriate means. Use jack stands in pairs to support loads. Inspect jack stands before use as indicated by the manufacturer's owner's manual.
- Lift only on areas of the vehicle as specified by the vehicle manufacturer's owner's manual.
- Center load on the jack saddle. Off center loads can cause loss of load or damages to load and/or equipment.
- Never work directly under a supported load.
- Do not move or dolly the vehicle while on the jack.
- Place wheel chocks under vehicle wheels on both sides to prevent rolling.
- Use in dry, well lit areas.
- Keep children and bystanders away. Children must never be allowed in work area. Do not let children play on or around jack or lifted load.
- Any jack that appears to be damaged in any way or is found to be worn or operates abnormally **SHALL BE REMOVED FROM SERVICE IMMEDIATELY UNTIL REPAIRED**. It is recommended that a manufacturer or supplier's authorized repair facility make necessary repairs if the manufacturer or supplier permits repairs.
- Because of potential hazards associated with this type of equipment, **NO ALTERATIONS SHALL BE MADE** to this product.
- Only attachments and/or adaptors supplied by the manufacturer shall be used.
- Failure to heed these warnings may result in property damage, personal injury and/or death.

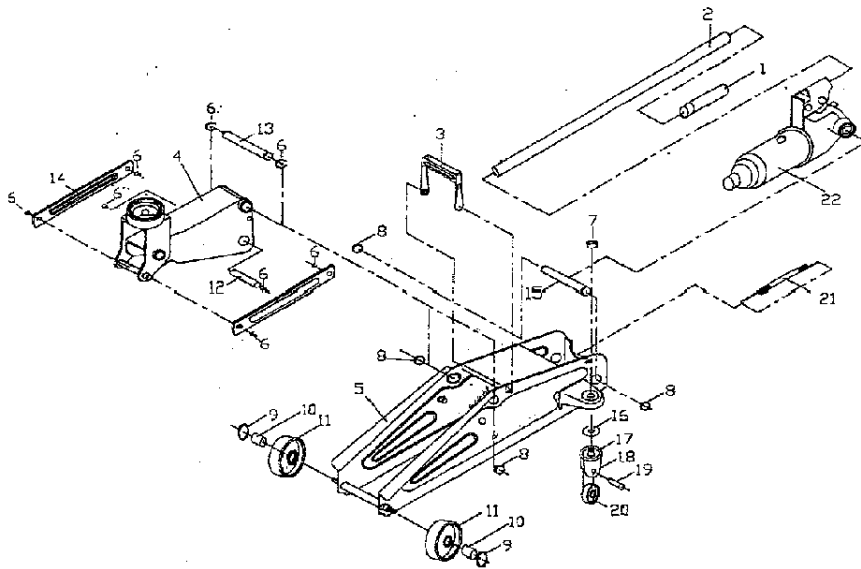


**1-800-345-4545** [jeps.com](http://jeps.com)

## Main Jack Parts List

Part #	Qty	Description	Part #	Qty	Description
1	1	Cap & Release Valve	12	1	Cross Head Pin
2	1	Handle	13	1	Spindle, Lifting Arm
3	1	Portable Handle	14	2	Radius Link
4	1	Lifting Arm	15	1	Anchor Bolt
5	1	Side Board	16	2	Steel Ball Bearing
6	8	Circlip	17	2	Bolt, Caster Wheel
7	2	Nut	18	2	Fork, Caster Wheel
8	4	Circlip	19	2	Spindle, Caster Wheel
9	2	Flat Washer	20	2	Caster Wheel
10	2	Spacer, Front Wheel	21	1	Return Spring
11	2	Front Wheel	22	1	Hydraulic Unit Assembly

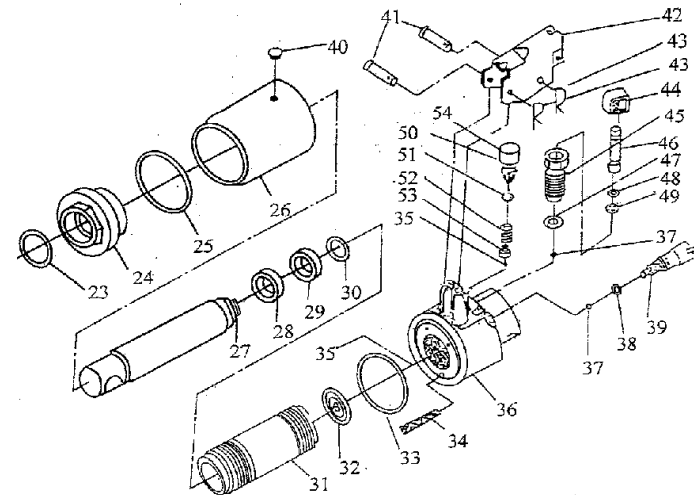
## Main Jack Parts Diagram



## Power Unit Parts List

Part #	Qty	Description	Part #	Qty	Description
23	1	Top Nut O-Ring	39	1	Release Valve
24	1	Top Nut	40	1	Filler Plug
25	1	Small Nylon Washer	41	2	Connector Pin
26	1	Oil Reserve	42	1	Operating Link
27	1	Ram	43	2	Split Pin
28	1	Collar	44	1	Spring Clip
29	1	Cup Seal Ram	45	1	Pump Cylinder
30	1	O-Ring Seal	46	1	Piston
31	1	Cylinder	47	1	Copper Washer
32	1	Copper Washer	48	1	Back Up Ring
33	1	Large Nylon Washer	49	1	O-Ring
34	1	Screen Filter Body	50	1	Overload Valve Screen
35	2	Steel Ball 3/16"	51	1	Overload Valve O-Ring
36	1	Power Unit Casting	52	1	Spring Overload Valve
37	2	Steel Ball 1/4"	53	1	Spring Guard
38	1	Release Valve O-Ring	54	1	Cap

## Power Unit Parts Diagram



## Operation

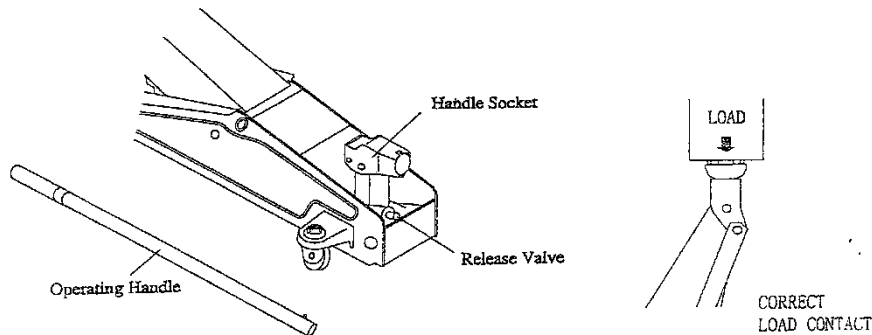
Prior to each use, visually inspect jack. Check for cracks, cracked welds, and missing and/or damaged parts. Any jack that appears to be damaged in any of these ways must not be used.

### To Lift

- (d) Turn the release valve clockwise to the closed position. Do not over tighten.
- (e) Consult the vehicle owner's manual to determine the location of jack points and position the jack under the prescribed lift point. Be sure to set the vehicle parking brake and lock the wheels.
- (f) Be sure that the vehicle and the jack are on a hard, level surface.
- (g) Begin lifting by pumping the handle up and down.
- (h) Always use jack stands in pairs to support loads at locations recommended by the vehicle manufacturer. Jacks are not designed to maintain heavy loads for prolonged periods of time.
- (i) Turn the release valve slowly counterclockwise to lower the vehicle onto jack stands.

### To Lower

- (a) Turn the release valve clockwise to the closed position. Do not over tighten.
- (b) Pump the handle up and down to lift vehicle off jack stands.
- (c) Remove the jack stands. Do not get under or let anyone under the vehicle while lowering.
- (d) Turn the release valve slowly counterclockwise to lower the vehicle onto the ground.



## Maintenance

- (a) Visual inspection MUST be made prior to each use of jack. Check for cracks, cracked welds, missing or damaged parts.
- (b) Keep all moving parts clean and well lubricated.
- (c) Owners and/or operators should be aware that repair of this equipment may require specialized knowledge and facilities. It is recommended that an annual inspection of the product be made by a manufacturer or supplier's authorized repair facility and that any defective parts, decals, or safety labels and signs be replaced with manufacturer or supplier's specified parts.

## Troubleshooting

Problem	Possible Cause	Remedy
Saddle won't rise	<ol style="list-style-type: none"> <li>1. Release valve open.</li> <li>2. Oil Exhausted.</li> <li>3. Defective suction and/or exhaust valve.</li> <li>4. Packing worn out or defective.</li> </ol>	<ol style="list-style-type: none"> <li>1. Tighten release valve.</li> <li>2. Fill tank with oil.</li> <li>3. Check for dust or foreign matter inside and clean.</li> <li>4. Replace packing.</li> </ol>
Lifts only half way	<ol style="list-style-type: none"> <li>1. Insufficient oil.</li> </ol>	<ol style="list-style-type: none"> <li>1. Check oil supply and fill.</li> </ol>
Lifts, then lowers out of control	<ol style="list-style-type: none"> <li>1. Air in system.</li> <li>2. Defective suction and/or release valve.</li> <li>3. Defective piston packing.</li> </ol>	<ol style="list-style-type: none"> <li>1. Check oil supply and fill. Open oil plug on the front of cylinder. Hold saddle down. Open release valve and pump handle several times.</li> <li>2. Clean valves and adjust valve contact.</li> <li>3. Replace the piston packing.</li> </ol>
Erratic lift.	<ol style="list-style-type: none"> <li>1. Defective plunger packing and/or valve.</li> </ol>	<ol style="list-style-type: none"> <li>1. Clean valves and/or packing.</li> </ol>

## Check and refill oil

Use hydraulic jack oil only. Do not use brake or transmission fluids or regular motor oil or any other fluids as they may damage the seals.

- (a) Turn the release valve counterclockwise to allow ram to fully retract. It may be necessary to apply force to the saddle for complete lowering.
- (b) With the jack in the level position, remove the oil fill plug. Stand jack in a vertical position with the handle socket down. The oil should be level with the bottom of fill hole. If not, top off. Do not overfill. Always fill with new, clean hydraulic jack oil.
- (c) Replace oil fill plug and check jack operation.
- (d) Purge air from system as required.

## Air Purge Procedure

During shipment or after refilling oil, air may get into the hydraulic system causing poor lift performance. Purge system for better performance.

- (a) Turn the release valve fully counterclockwise to fully open the release valve.
- (b) Pump handle rapidly several times
- (c) Turn the release valve clockwise to close the release valve.
- (d) Pump the handle until the lift arm reaches maximum height and continue to pump several times to remove trapped air in the ram.
- (e) Turn the release valve counterclockwise in one full turn and lower lift arm to the lowest position. Use force on saddle if necessary.
- (f) Carefully and slowly pinch oil fill plug to release trapped air.
- (g) Turn the release valve clockwise to closed position and check for proper pump action. It may be necessary to perform the above steps more than once to assure air is completely evacuated.



1-800-345-4545 [jeps.com](http://jeps.com)