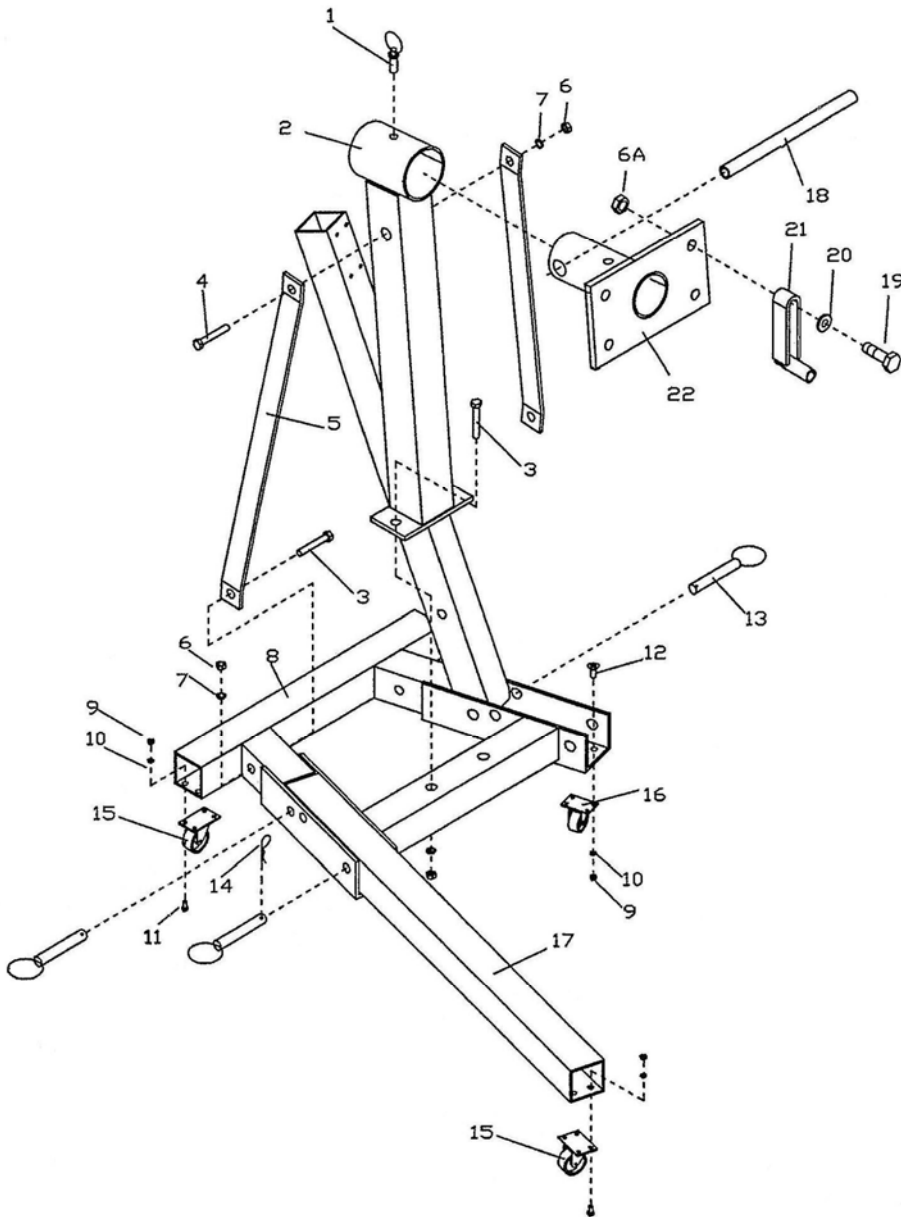


# Installation Instructions for 80042 2000 lb. Engine Stand

## Installation Instructions:

1. Do not exceed the maximum capacity of 2000 lbs.
2. Use only on hard level surface.
3. Never attempt to move loaded stand across floors having cracks or other obstacles which might impede movement of wheels.
4. Never work directly under a supported engine.
5. Be sure load and stand are stable.
6. Periodically inspect stand to insure its safe operation.
7. Failure to follow any of these instructions may result in property damage or personal injury.



| PARTS NEEDED |                  |     |
|--------------|------------------|-----|
| PART         | DESCRIPTION      | QTY |
| 1            | Pin              | 1   |
| 2            | Vertical Column  | 1   |
| 3            | Bolt M14x90      | 4   |
| 4            | Bolt M14x100     | 1   |
| 5            | Support          | 2   |
| 6            | M14 Nut          | 5   |
| 6A           | M16 Nut          | 4   |
| 7            | Ø14 Washer       | 5   |
| 8            | Rear Cross Beam  | 1   |
| 9            | M8 Nut           | 24  |
| 10           | Ø8 Spring Washer | 24  |
| 11           | Bolt M8x16       | 16  |
| 12           | Bolt M8x18       | 8   |
| 13           | Lock Pin         | 4   |
| 14           | " R " Pin        | 4   |
| 15           | 3 1/2" Wheel     | 4   |
| 16           | 3" Wheel         | 2   |
| 17           | Legs             | 2   |
| 18           | Handle           | 1   |
| 19           | Bolt M16x75      | 4   |
| 20           | Ø16 Washer       | 4   |
| 21           | Shifting Stand   | 4   |
| 22           | Turning Plate    | 1   |