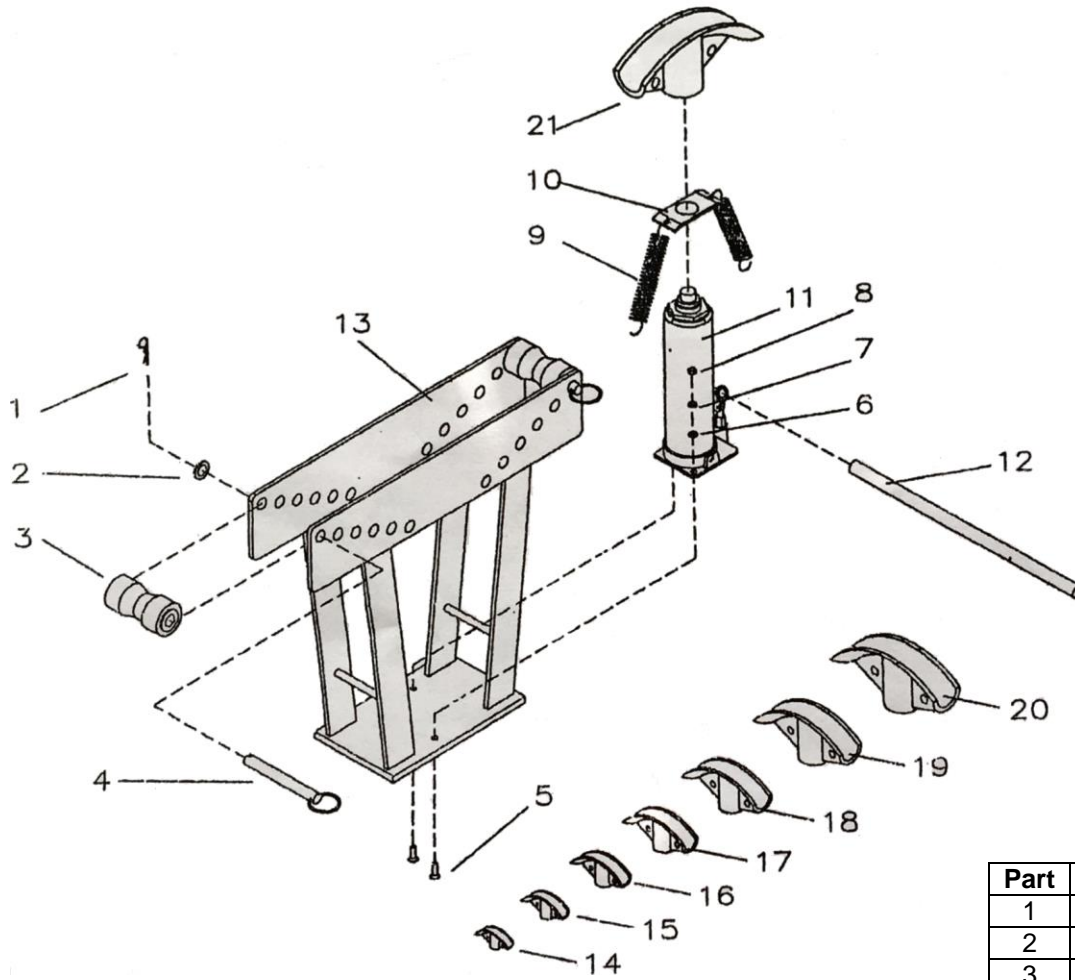


# Installation Instructions for 81522 16 Ton Hydraulic Pipe Bender



Part	Description	Qty
1	" R" Pin	2
2	M20 Washer	2
3	Roller	2
4	M19 Pin	2
5	Bolt M8 x 30	2
6	M8 Washer	2
7	M8 Spring Washer	2
8	M8 Nut	2
9	Spring	2
10	Plate	1
11	Pump	1
12	Handle	1
13	Frame	1
14	1/2" Bending Die	1
15	3/4" Bending Die	1
16	1" Bending Die	1
17	1-1/4" Bending Die	1
18	1-1/2" Bending Die	1
19	2" Bending Die	1
20	2-1/2" Bending Die	1
21	3" Bending Die	1