



# Power Control Module

## LS1 Corvette



## Installation Instructions

### Jet Performance Products

17491 Apex Circle

Huntington Beach, CA 92647

Phone: (714) 848-5515 • Fax: (714) 847-6290

## Installation Guide for Part #'s:

19716/19716S

19718/19718S

19816/19816S

19818/19818S

19916/19916S

19918/19918S

10016/10016S

10018/10018S

10116/10116S

10118/10118S

# 1997-1998 Corvette Installation Procedures

1. Disconnect negative battery cable  
(see Fig. 1).

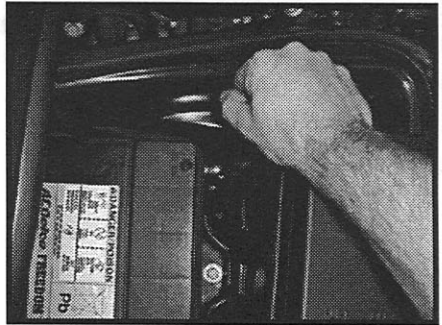


Figure 1

2. Using floor jack or lift, raise passenger front side of vehicle. Use extreme caution, only jack using factory recommendations and using factory jack points (see Fig. 2). If you have any questions, please consult your owners manual for correct jacking procedure. **MAKE SURE VEHICLE IS PROPERLY SECURED WITH JACK STANDS BEFORE PROCEEDING ANY FURTHER.**

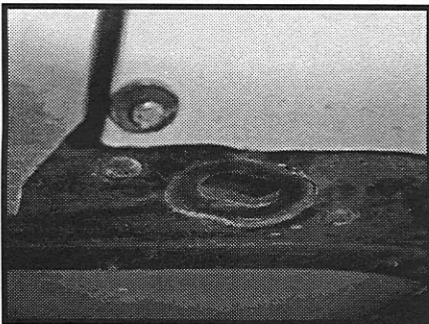


Figure 2

3. Remove ECU protective shroud (large plastic piece covering computer located inside passenger fenderwell) you must remove panel screw from the passenger wheel well (see Fig. 3). Now remove 2 screws on lower quarter panel, note one is located on the underside (see Fig. 4).

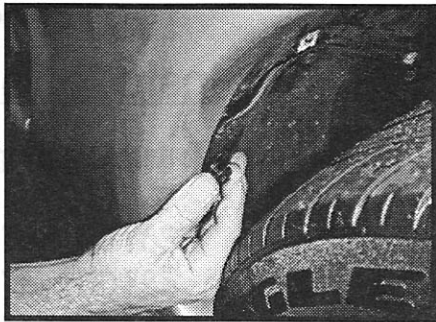


Figure 3

4. Remove the BLUE factory harness located nearest the fender of the vehicle, turn the connector bolt (9/32) counter clockwise to slowly draw the harness away from the computer (see Fig. 5).

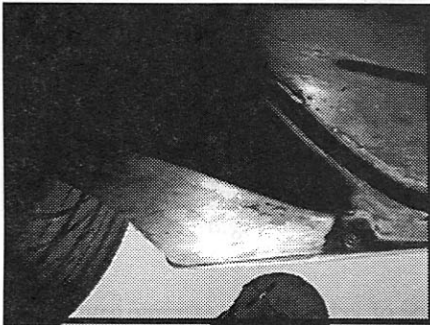


Figure 4



Fig. 5

5. Install the JET extender bolt into the ECM (computer). Tighten the extender bolt all the way down until it bottoms out. (see Fig. 6).

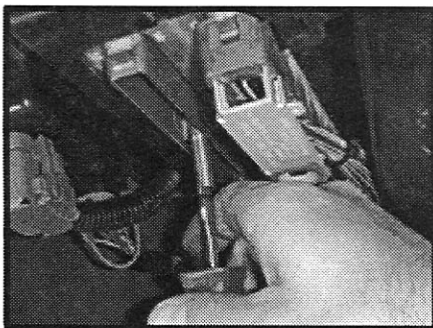
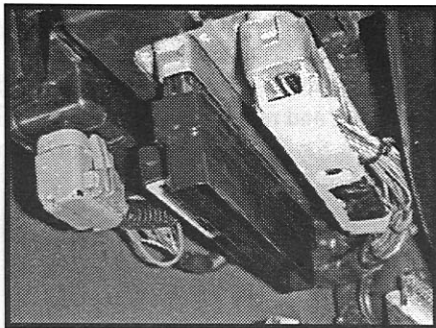
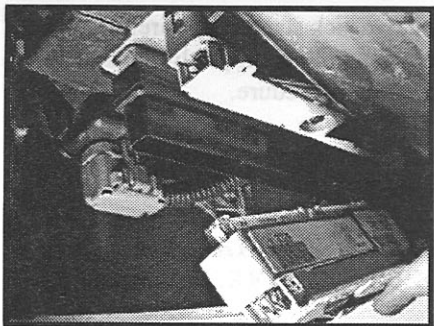


Fig. 6

6. Install JET PCM into the factory computer  
(see Fig. 7).



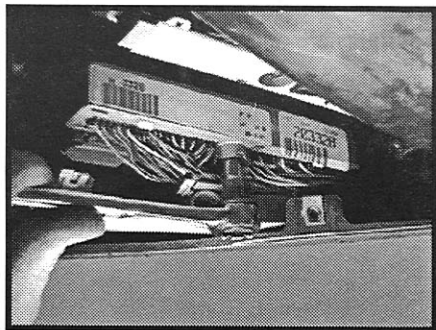
*Fig. 7*



*Fig. 8*

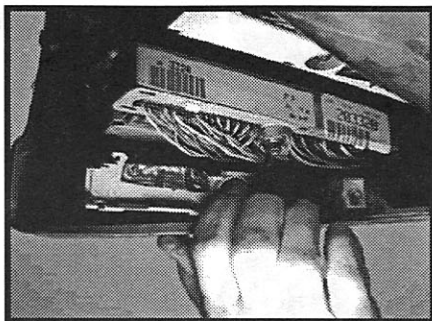
7. Install factory harness onto the JET PCM  
(see Fig. 8).

8. Tighten connector bolt (9/32) on factory harness, JET PCM, and computer together nice and snug.  
(see Fig. 9).

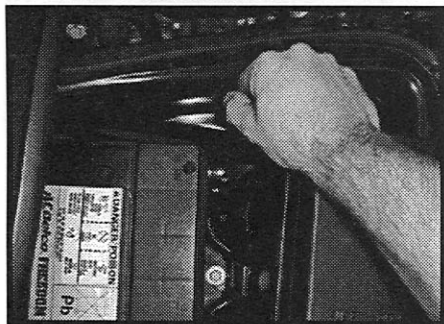


*Fig. 9*

9. To reinstall the ECU protective cover you will need to remove the factory wiring harness plastic cover, push the clips in and remove it to expose the wires. This is for clearance reasons and has no effect on the wiring (see Fig. 10).



*Fig. 10*



*Fig. 1*

10. Remove jack stands and carefully lower vehicle. Follow proper lifting and lowering procedure.
11. Reconnect negative battery cable (see Fig. 1).

12. Start vehicle and verify no dash warning lights are on.

# 1999-2002 Corvette LS1

## Installation Procedures

1. Disconnect negative battery cable  
(see Fig. 1).

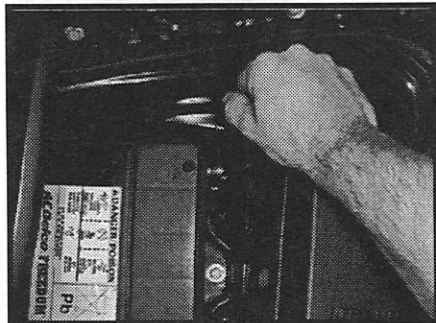


Figure 1

2. Using floor jack or lift, raise passenger front side of vehicle. Use extreme caution, only jack using factory recommendations and using factory jack points (see Fig. 2). If you have any questions, please consult your owner's manual for correct jacking procedure. **MAKE SURE VEHICLE IS PROPERLY SECURED WITH JACK STANDS BEFORE PROCEEDING ANY FURTHER.**

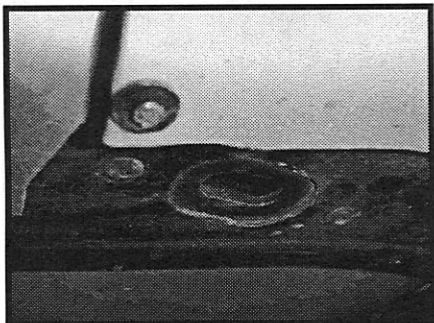


Figure 2

3. Remove ECU protective shroud (large plastic piece covering computer located inside passenger fenderwell). You must remove panel screws from the passenger wheel well and underside of vehicle. (see Fig. 3).

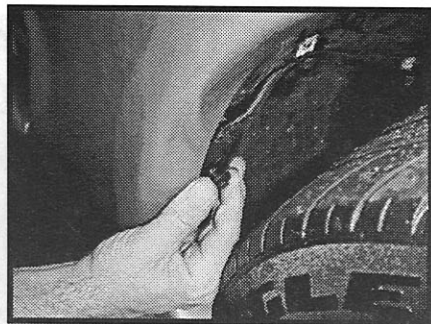


Figure 3

4. Remove the RED factory harness located further from the fender of the vehicle, turn the connector bolt (9/32) counter clockwise to slowly draw the harness away from the computer (see Fig. 4).

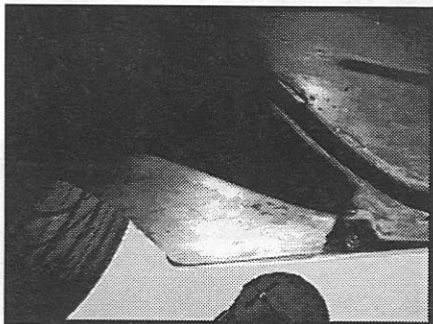


Figure 4

5. Install the JET extender bolt into the

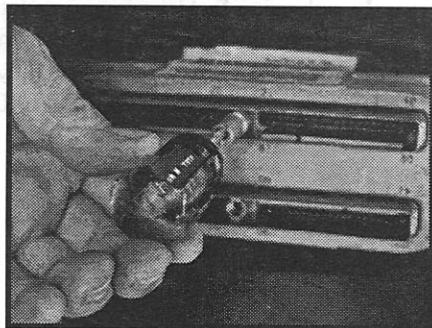


Fig. 5

factory computer and tighten. (see Fig. 5)

6. Install JET PCM into the factory computer. Be sure to seat firmly in ECU. (see Fig. 6)

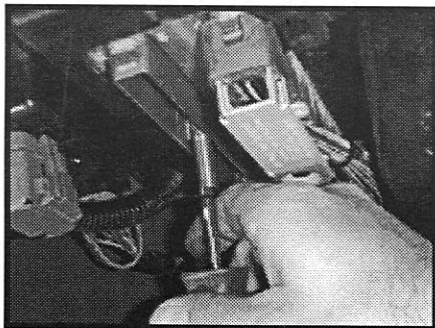


Fig. 6



7. Install factory harness into the JET PCM.

(see Fig. 7)

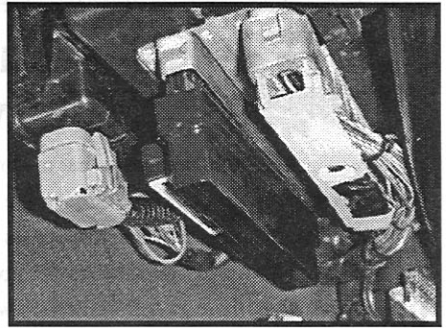


Fig. 7

8. Tighten connector bolt (9/32) on factory harness to draw the ECM into the JET PCM and factory computer. Be sure to tighten to the torque specifications on the factory harness. (see Fig. 8).

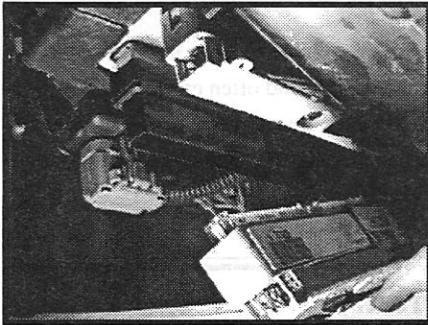


Fig. 8

9. To re-install the ECU protective panel, you will need to remove the factory wiring harness plastic cover, push the clips in and remove it to expose the wires. This is for clearance reasons and has no effect on the wiring.
10. Re-insert all ECU protective panel screws.
11. Remove jack stands and carefully lower vehicle. Follow proper lifting and lowering procedures.
12. Reconnect negative battery terminal.
13. Start vehicle and verify no dash warning lights are on.

**Place this card in the glove box along with  
the vehicle registration and/or warranty**

*The information shown below is provided for future reference*

## **Jet Powertech Performance Product**

The product for which this document was issued is emission-sensitive and is subject to certain federal and state regulations; the manufacturer has assigned an identification color code designating its intended use.

The designation is:



**COLOR CODE GREEN**

The product accompanying this document has been guaranteed a California Air Resources Board (ARB) exemption, an "EO" number, or is a direct or consolidated replacement part. It is 50-state legal, per the manufacturer's application guide.