

Jet Performance Products Limited Warranty

JET Performance Products warrants Chips, Modules and Programmers to be free from defects in material and workmanship under normal use and if properly installed. This limited 2 year warranty is to the original purchaser. If found to be defective as mentioned above, it will be replaced or repaired at the sole discretion of JET if returned prepaid along with proof of purchase.

All other products and services performed by JET are warranted to be free of defects in material and workmanship for a period of six (6) months from date of purchase.

Repair, replacement or credit will be based on the date of purchase and will be at the sole discretion of JET. Cost for labor are specifically excluded and are the sole responsibility of the purchaser.

This warranty DOES NOT apply to Custom programming or any product incorrectly installed, modified by the purchaser, or to any product that has been damaged, subjected to misuse, negligence or accident.

To obtain warranty service or a Return Authorization number, contact our Customer service department at (714) 848-5515 between 8am and 5pm Pacific Standard time, Monday through Friday.

Defective products may be brought or sent prepaid (with a Return Authorization number) to: JET Performance Products 17491 Apex Circle Huntington Beach, Ca. 92647.

FOR WARRANTY REGISTRATION GO TO: www.jetchip.com

c. JET Performance Products 2013
JET P/N GMCHIP Rev. 2/13

Jet Performance Products Limited Warranty

JET Performance Products warrants Chips, Modules and Programmers to be free from defects in material and workmanship under normal use and if properly installed. This limited 2 year warranty is to the original purchaser. If found to be defective as mentioned above, it will be replaced or repaired at the sole discretion of JET if returned prepaid along with proof of purchase.

All other products and services performed by JET are warranted to be free of defects in material and workmanship for a period of six (6) months from date of purchase.

Repair, replacement or credit will be based on the date of purchase and will be at the sole discretion of JET. Cost for labor are specifically excluded and are the sole responsibility of the purchaser.

This warranty DOES NOT apply to Custom programming or any product incorrectly installed, modified by the purchaser, or to any product that has been damaged, subjected to misuse, negligence or accident.

To obtain warranty service or a Return Authorization number, contact our Customer service department at (714) 848-5515 between 8am and 5pm Pacific Standard time, Monday through Friday.

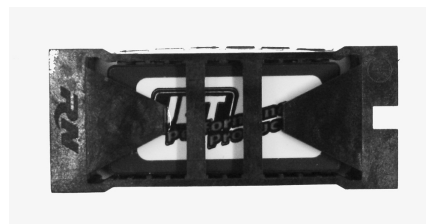
Defective products may be brought or sent prepaid (with a Return Authorization number) to: JET Performance Products 17491 Apex Circle Huntington Beach, Ca. 92647.

FOR WARRANTY REGISTRATION GO TO: www.jetchip.com

c. JET Performance Products 2013
JET P/N GMCHIP Rev. 2/13



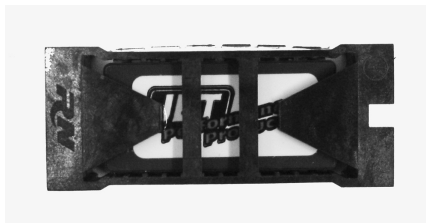
Installation Instructions for General Motors Chips



JET Performance Products, Inc
17491 Apex Circle
Huntington Beach, Ca. 92647
Tech Line (714) 848-5515
[wwwjetchip.com](http://www.jetchip.com)



Installation Instructions for General Motors Chips



JET Performance Products, Inc
17491 Apex Circle
Huntington Beach, Ca. 92647
Tech Line (714) 848-5515
wwwjetchip.com



Performance Chip Installation for GM Applications

1. Disconnect the negative battery cable.
2. Locate the ECM using the Vehicle chart and the ECM location chart.
3. Unplug the wiring harness to the ECM and remove the ECM from the vehicle.
4. Remove the metal cover on the top of the ECM with a nut driver , socket or screwdriver. These are normally 1/4 inch, 7 mm or Torx head screws.
5. Remove the stock chip from the ECM by pulling up on the ends of the stock chip . (See photo 1)
6. Install the JET Performance Chip back into the socket in the ECM that the stock chip was removed from and press down carefully to seat it. (See photo 2)

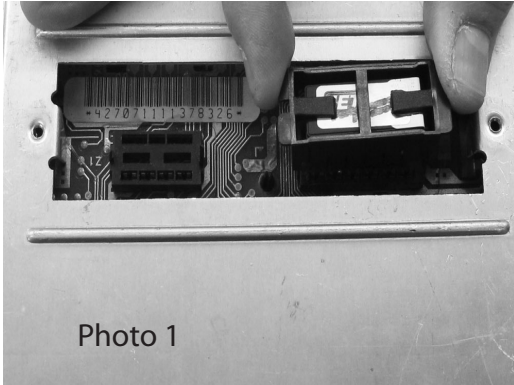


Photo 1

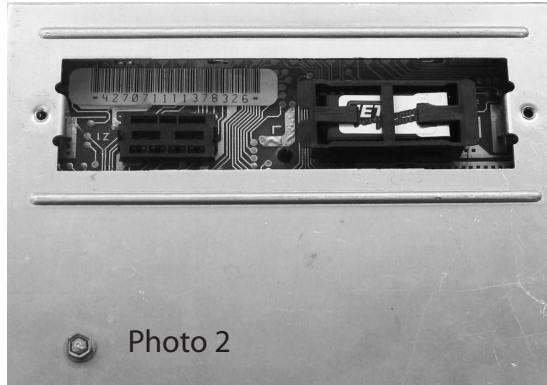


Photo 2

Chevrolet/GMC/Pontiac

Year	Model	Chart #
1986-1995	Astro Van	1
1982-1988	Cavalier/Celebrity	3
1981	Camaro /Firebird	4
1982-1992	Camaro/Firebird	2
1993-1995	Camaro/Firebird	7
1984-1995	C/K 15, 25, 35	3
1981-1982	Corvette	5
1984-1989	Corvette	2
1990-1995	Corvette	6
1988-1991	Grand Prix	1
1990-1994	Lumina	7
1982-1988	Monte Carlo	1
1984-1995	S10/S15	2

Buick and Oldsmobile

1983-1989	Cutlass	1
1983-1987	GN/Regal	1

E.C.M. Location Charts

- 1- Behind Passenger kick panel
- 2- Under dash (passenger side)
- 3- Behind Glove compartment
- 4- In center console
- 5- Behind Drivers Seat (next to battery)
- 6- Drivers side under hood
7. Passengers side under hood



Performance Chip Installation for GM Applications

1. Disconnect the negative battery cable.
2. Locate the ECM using the Vehicle chart and the ECM location chart.
3. Unplug the wiring harness to the ECM and remove the ECM from the vehicle.
4. Remove the metal cover on the top of the ECM with a nut driver , socket or screwdriver. These are normally 1/4 inch, 7 mm or Torx head screws.
5. Remove the stock chip from the ECM by carefully pulling up on the ends of the stock chip (see photo 1)
6. Install the JET Performance Chip back into the socket in the ECM that the stock chip was removed from and press down carefully to seat it. (See photo 2)

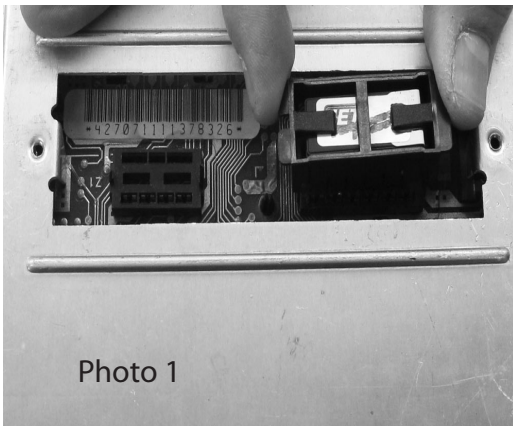


Photo 1

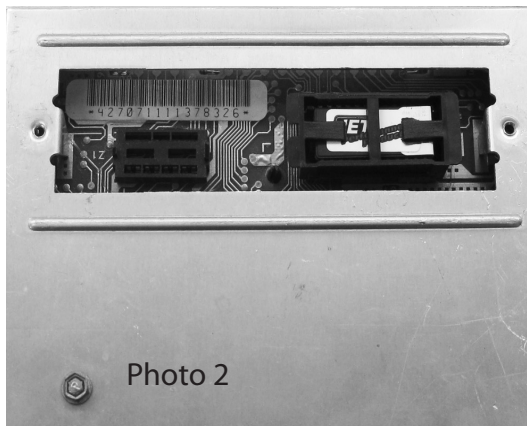


Photo 2

Chevrolet/GMC/Pontiac

Year	Model	Chart #
1986-1995	Astro Van	1
1982-1988	Cavalier/Celebrity	3
1981	Camaro /Firebird	4
1982-1992	Camaro/Firebird	2
1993-1995	Camaro/Firebird	7
1984-1995	C/K 15, 25, 35	3
1981-1982	Corvette	5
1984-1989	Corvette	2
1990-1995	Corvette	6
1988-1991	Grand Prix	1
1990-1994	Lumina	7
1982-1988	Monte Carlo	1
1984-1995	S10/S15	2

Buick and Oldsmobile

1983-1989	Cutlass	1
1983-1987	GN/Regal	1

E.C.M. Location Charts

- 1- Behind Passenger kick panel
- 2- Under dash (passenger side)
- 3- Behind Glove compartment
- 4- In center console
- 5- Behind Drivers Seat (next to battery)
- 6- Drivers side under hood
7. Passengers side under hood