



# OWNER'S MANUAL

## C3 Corvette



**\*Steering wheel and column not included**





## Required tools

- Drill
- Right angle grinder, with cutting disc
- Goggles
- Measuring tape
- Steering wheel removing tool
- You will also need hand tools to remove steering column



## Recommendations

The installation of this system should be done by a professional mechanic or a very knowledgeable amateur.

You will be cutting and splicing your steering column, therefore EPAS Performance will not be held responsible for any malpractice.

Caution should be taken when installing the electric motor: no impacts, shocks or hammering should be done to the unit.

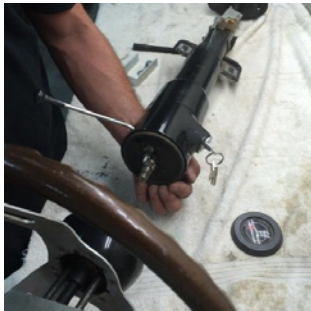
For esthetic reason, you may choose to paint the assembly either in black or the color of your steering column to conserve the original look.

EPAS Performance wishes you thousands of enjoyable miles with your new Electric Power Steering!

For a complete understanding, **we strongly suggest reading this owner's manual prior to any installation** . Should you have any questions or concerns feel free to contact Geoff Mason at (941) 893-5427 or visit our website for installation videos.

Remove steering column.

Then at the work bench remove steering wheel, lock mechanism.



Cut steering column at 22 3/8" from the steering wheel as shown in pictures.



Then cut 3 1/2" of the steering shaft, the shaft will then slide into the 3/4" DD on the electric motor and tighten the two set screws.

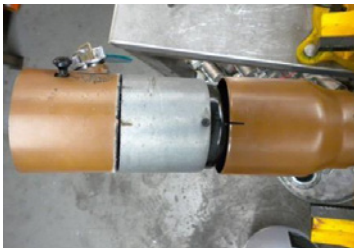
**Make sure the set screws are properly seated by drilling a pre-hole. You can also weld the shaft onto the coupling.**



Once the shaft is attached to the motor, reassemble it to the column. Make sure you have the proper depth for reassembling your steering lock mechanism and steering wheel. If the depth isn't correct, adjust it before welding.



You will also need to put a screw in the key lock out mechanism.



You can now install your pre-assembled steering column with electric motor. You will now need to clock the motor, mark its exact location (3 o'clock) on the column then take the column back out, drill and tap the column to the electric motor to avoid it from turning as shown in the pictures.



Once everything is tight you can re-install the column.

Now you can install the firewall plate, U-joints and collapsible shaft.

**Install everything loose, only to tighten when all is installed or else bearing will bind.**



Now you can install the ECU. It fits perfectly behind the parking brake, inside the console.

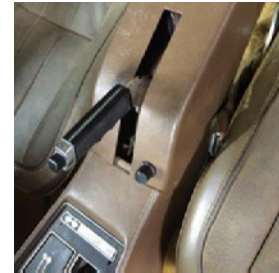


The wires will run inside the console, the power wire will go from front to back blue terminal and the torque sensor from back to front Delco pack and small red ignition wire from back to front as well.

The small black wire and large back wire will be grounded to the emergency bracket.

The large red wire goes to the battery.

The potentiometer can go on the console.



Once everything is hooked up, turn the power on, wait for the little click (relays in module) and enjoy your new Electric Power Steering.

## TERMS AND CONDITIONS

### Liability Limitation and Release

We are pleased you have chosen to purchase one of our automotive specialty equipment items. Our products are carefully designed to combine performance, durability and safety, and to work in concert with the vehicle's original equipment. As they are specialty products, however, and as both performance and safety are paramount concerns, we urge our customers to consider having the products professionally installed.

We caution the purchaser that the enhancement provided by the specialty equipment item may change the handling characteristics of the vehicle. We urge the purchaser to carefully familiarize him/herself with the vehicle's performance characteristics with the new equipment. This should be done in a safe environment and in a safe manner.

We have no control over the quality or correctness of equipment installations performed by others, nor can we control the uses (in manner or environment) products are subjected to. Accordingly, liability on the part of EPAS Performance LLC is limited to the terms of its Express Limited Warranty.

A decision by the purchaser to retain and install the item purchased will be deemed acceptance of the specific terms of this Liability Limitation and Release.

**The purchaser expressly releases and waives any claim against us for any consequential damages or injury that may arise from the use, or any malfunction, of its product.** This Liability Limitation and Release binds the original purchaser, all successors in interest, and all persons to whom the product may subsequently be transferred; and the purchaser agrees to make this limitation known to all such persons. This Liability Limitation and Release is part of the consideration for the sale of the product.

This Liability Limitation and Release is governed by the laws of the State of Florida, United States of America. Any dispute regarding its terms or application is subject to arbitration in the State of Florida at the request of either party to the sale.

## WARRANTY

This warranty is limited to the repair or replacement of the defective part only; the warranty specifically excludes labor or consequential damages or injury. The decision as to whether the defective part will be repaired or replaced will rest solely with the manufacturer. The warranty period begins on the date the product is shipped to you.

Full 5-year warranty nontransferable.

This warranty is void if the product is or was improperly installed, abused in any manner. Road or accident damage is not covered.

To make a claim under this warranty, call EPAS Performance to return the defective product, shipping or postage prepaid. Please include a copy of the original purchase invoice and a note describing the circumstances of the failure or malfunction.

This warranty is governed by the laws of the State of Florida, United States of America. Any dispute regarding the coverage of this warranty, its application or terms is subject to arbitration in the State of Florida.

If the purchaser disagrees with any of the terms of this warranty, please return the purchased item within three (3) business days of receipt. A decision by the purchaser to retain and install the item purchased will be deemed acceptance of the specific terms of this warranty.

## RETURN POLICY

1. If your shipment arrives in a damaged condition, please notify the carrier immediately.
2. Inspect your order carefully upon receipt. If items are missing, you must contact us within five (5) working days.

BE SURE TO VISIT OUR WEBSITE  
FOR INSTALLATION VIDEOS!

[WWW.EPASPERFORMANCE.COM](http://WWW.EPASPERFORMANCE.COM)

EPAS PERFORMANCE  
1400 COMMERCE BOULEVARD  
SUITE A  
SARASOTA, FL 34243  
(941) 893-5427  
(800) EPAS-611  
(372-7611)

[GEOFF@EPASPERFORMANCE.COM](mailto:GEOFF@EPASPERFORMANCE.COM)

DON'T FORGET TO LIKE US!  
FACEBOOK/EPASPERFORMANCE  
TWITTER: @EPASPERFORMANCE  
YOUTUBE: EPAS PERFORMANCE