



34120KIT – 34140KIT Instructions

You have purchased the finest Child Adjustable Containment Seat available. These components (when installed correctly) are designed to reduce injury-producing movement of the upper body and head

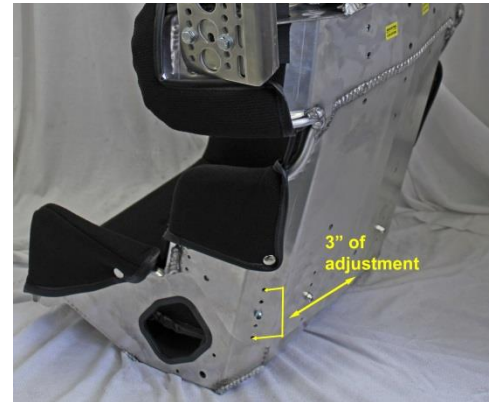
during a racing impact, but no device or component can prevent all injuries that may occur in auto racing. **Auto racing remains a very dangerous sport regardless of any protective devices you may use. Please read the instructions very carefully and if you have any questions please contact Kirkey Racing Fabrication Inc. 1-800-363-4885**

FAILURE TO COMPLY WITH THESE INSTRUCTIONS MAY CAUSE SERIOUS INJURY OR DEATH

Step 1 – setting the shoulder height.

You have the choice of five (5) different positions that you can use to set the height of the shoulder restraint, (see photo #1). Ideally you want the shoulder restraint positioned level with the top of driver's shoulders. You can start by attaching the back to the bottom of the seat in the middle position, (use the third set of holes). Now have the driver sit in the seat with the grey pad and bottom cover in place. The driver's shoulders should be level with top of shoulder restraint. If not, raise or lower accordingly. If you have the back raised to the very top and the driver's shoulders are above top of shoulders you have the option of removing the 1/2" grey bottom pad. If you are satisfied with the height you can now tighten all six (6) of the 3/16" bolts and nuts provided.

Photo #1



Step 2 – setting the head restraint height.

Now you can position the head restraint. You have the choice of six (6) different vertical positions, (see photo #2), and two (2) horizontal positions that you can use to set the head restraint position, (see photo #3). Ideally you want the head restraint positioned level with the driver's cheekbone, (see photo #4). With the bottom cover still in place, have the driver look to the left and to the right to ensure that their peripheral vision is not obstructed. If peripheral vision is obstructed adjust accordingly. With the restraint at the proper height fasten the head restraint to the seat using the pre-punched holes and four (4) of the 5/16" x 3/4" bolts, nuts and 8 washers provided. To make alignment easier do not tighten bolts until they are all in place. You now have the option of rotating front of restraint down for additional peripheral vision. **Do not overtighten.**

Photo #2

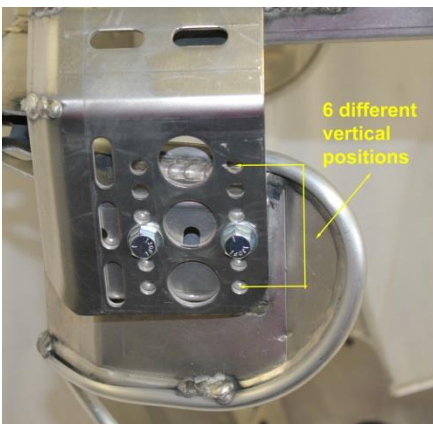


Photo #3

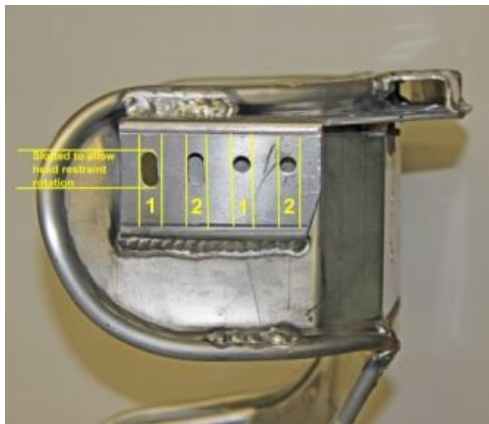


Photo #4



Torque all of the 5/16" bolts (4 in total) to 20ft.lbs

NOTE: Re torque after each race.

Hardware List:

8- 3/16" x 1/2" bolts (2 extra included in bolt kit)
4- 5/16" x 3/4" bolts
8- 5/16" washers

8- 3/16 lock nuts (2 extra included in bolt kit)
4- 5/16" lock nuts

Photo #5



Photo #6



INSTALLING THE SEAT IN THE VEHICLE

For the bottom we recommend that you use no less than two (2) 5/16" (8mm) bolts directly through the bottom, (spread the bolts out as far as possible to distribute the load). For the back we recommend no less than two (2) 5/16" (8mm) bolts using the pre-punched holes in the back of the seat, (see photo #6). We also make a bracket for this if seat can't be mounted to roll cage. Never mount to sheet metal. The part number for the rear bracket is 99205, (see image to right) **If you are not qualified to perform such fabrication have the installation done by an expert familiar with the requirements of such installation.**



PART # 99205

Optional 34 Series Insert Kit

Designed for drivers that are between seat sizes. High density padding insert reduces the inside width of the seat by 1". Easy to apply with peel and stick adhesive tape. Insert may need to be trimmed depending on the height that the seat is set at. The part number for the insert kit is **34INSERT**.



www.kirkeyracing.com
1-800-363-4885 (voice)

kirkey@kirkeyracing.com
1-800-829-7072 (fax)

Not intended for highway or airplane use