



Equipped with AEM® Dryflow™ Filter  
No Oil Required!

# INSTALLATION INSTRUCTIONS

## PART NUMBER

### 21-754DS

---

2012-2015

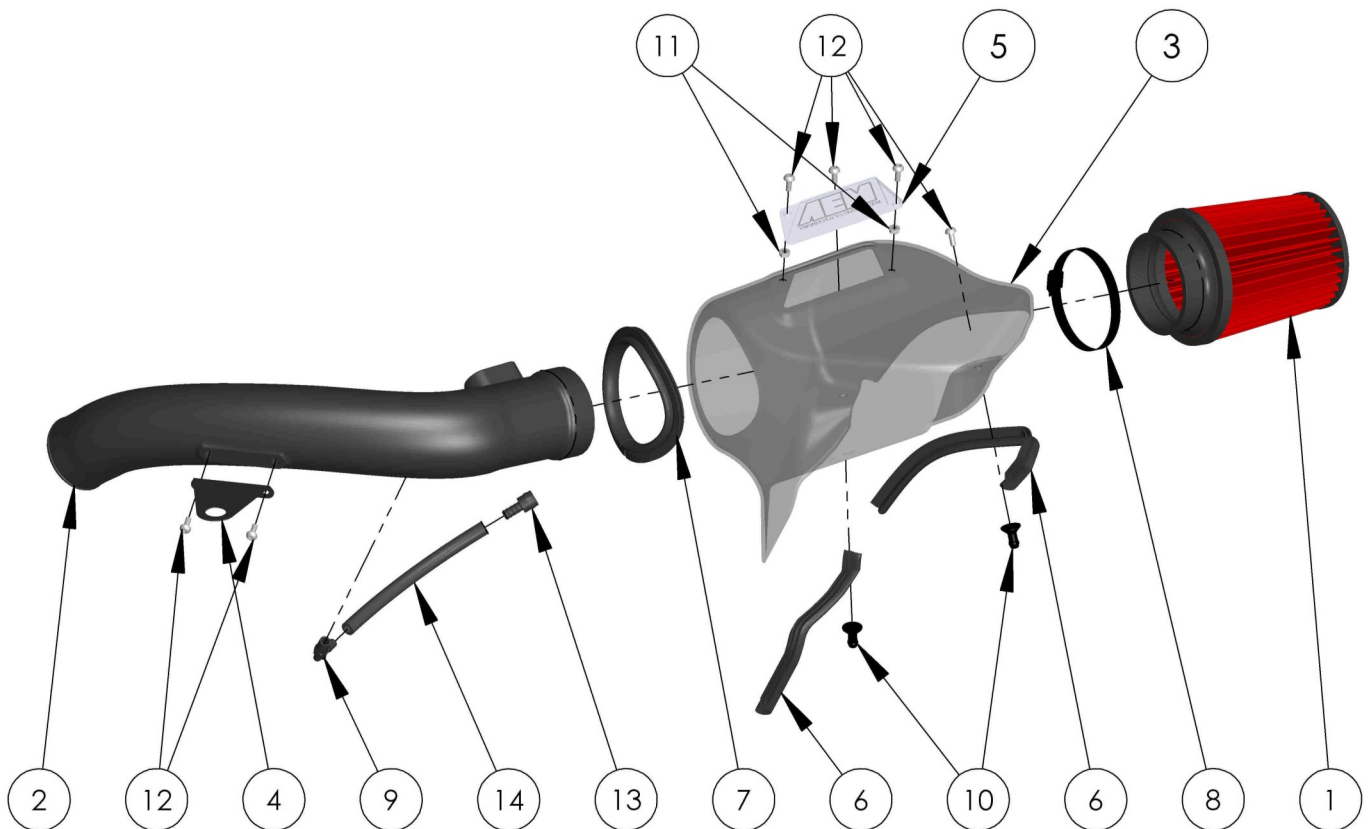
BMW

335i

3.0L

Not legal for sale or use on any pollution controlled motor vehicle in California or states adopting California emission procedures. See [AEMIntakes.com](http://AEMIntakes.com) for CARB status on each part for a specific vehicle.

ITEM NO.	PART NUMBER	DESCRIPTION	QTY.
1	21-2057DK	AIR FILTER	1
2	9-0442	TUBE; 2012 BMW 335i	1
3	9-0443	AIRBOX; 2012 BMW 335i	1
4	7-345	PLATE; 4.1" X 3.8" X .05"	1
5	8-211	PLATE; AEM LOGO, CLEAR, 6.2" X 2.4" X .25"	1
6	8-4014	EDGE TRIM, 14"	2
7	8-4017	EDGE TRIM, 17"	1
8	08671K	HOSE CLAMP, 4.00"-5.00", BLACK	1
9	08523	VENT; 1/4" NPT, 90 DEG., 3/8" BARBED	1
10	8-186-1	MOUNT, PLASTIC AIRBOX, NYLON	2
11	444.460.04	NUT, M6 HEX SERRATED	2
12	07730	BOLT; M6 X 1.00 X 16MM , BUTTONHEAD, SS	6
13	08643	DOUBLE SPIGOT; NW 10-10-0	1
14	5-1008	HOSE; 3/8"ID X 8"L	1



Read and understand these instructions **BEFORE** attempting to install this product. Failure to follow installation instructions and not using the provided hardware may damage your new products and engine.

## 1. Preparing Vehicle

- a. Make sure vehicle is parked on level surface.
- b. Set the parking brake.
- c. If engine has run in the past two hours, let it cool down.
- d. Disconnect negative battery terminal.
- e. Do not discard stock components after removal.
- f. Open the air intake kit package and refer to page 2 to make sure all parts are included.

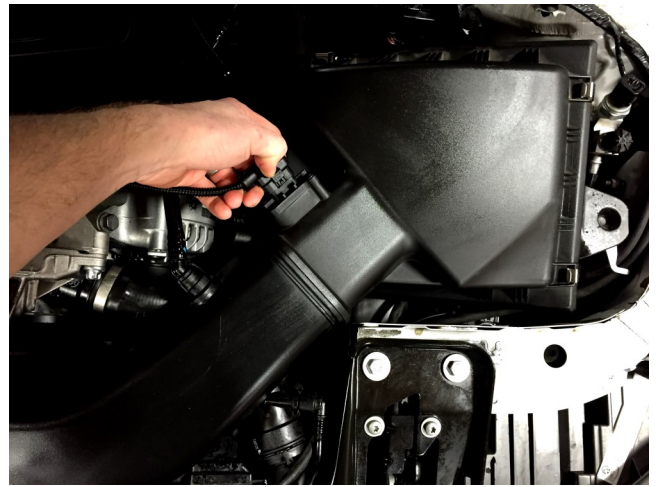
### Tools Needed:

Screwdriver  
10mm Socket  
Socket Driver  
T20 Torx Bit  
4mm Hex Bit  
Utility Knife

## 2. Removal of stock system



a. Squeeze the knurled portions of the quick release on the air line at the intake and pull to remove.



b. Disconnect MAF sensor wiring harness. Remove the sensor with a T20 Torx bit and set aside in a safe, clean place. Keep the screws for re-use.



c. Loosen the clamp sealing the factory intake to the turbo inlet hose with a flat screwdriver or 6mm socket and disconnect the hose. Lift the tube mounting bracket off of its rubber mount. Set the rubber mount aside for reuse.



d. Gripping the airbox on both sides as shown, lift the factory intake plumbing out of its two mount sockets. The entire system can now be removed.

### 3. Installation of AEM® intake system.



a. Assemble the intake tube according to the diagram on pg2. Reuse the factory MAF sensor screws and rubber grommet in the plate bracket. Trim the hose as needed.



b. Assemble the heat shield components as shown above according to the diagram on pg2. Trim the edge trim as needed.



c. Slide the intake tube through its opening in the heat shield. Then, install the air filter as shown. Torque the clamp to 30 in-lbs.



d. Lower the assembled system into the engine bay. Seat the airbox into its two corresponding rubber mounts taking care to ensure that the factory wiring is oriented in such a way that it will not be stressed.

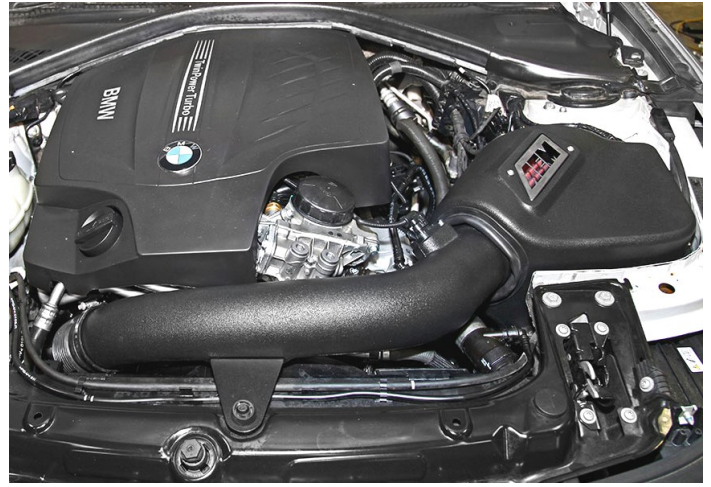


e. Install the intake tube into the turbo inlet hose, then push the plate bracket rubber mount down over its post. Torque the inlet hose clamp to 30 in-lbs.

f. Reinstall the air line into the spigot adapter and re-connect the MAF sensor wiring harness.



STOCK INTAKE INSTALLED



AEM INTAKE INSTALLED

#### 4. Reassemble Vehicle

- a. Position the inlet tube for the best fitment. Ensure that no intake system components contact any unintended portion of the vehicle.
- b. Check for proper hood clearance. Re-adjust intake tube if necessary and re-tighten connections.
- c. Inspect the engine bay for any loose tools and check that all fasteners that were moved or removed are properly tightened.
- d. Reconnect negative battery terminal and start engine. Let the vehicle idle for 3 minutes. Perform a final inspection before driving the vehicle.

#### 5. Service and Maintenance

- a. AEM Induction Systems requires cleaning the intake system's air filter element every 100,000 miles. When used in dusty or off-road environments, our filters will require cleaning more often. We recommend that you visually inspect your filter once every 25,000 miles to determine if the screen is still visible. When the screen is no longer visible some place on the filter element, it is time to clean it. To clean, purchase our Synthetic air filter cleaner, part number 1-1000 and follow the easy instructions.
- b. Use window cleaner to clean your powder coated AEM<sup>®</sup> intake tube.

**NOTE: DO NOT USE aluminum polish on powder coated AEM<sup>®</sup> intake tubes.**

For technical inquiries  
e-mail us at  
[sales@aemintakes.com](mailto:sales@aemintakes.com)  
or  
call us at  
800.992.3000

## **AEM Air Intake System Warranty Policy**

AEM® warrants that its intake systems will last for the life of your vehicle. AEM® will not honor this warranty due to mechanical damage (i.e. improper installation or fitment), damage from misuse, accidents or flying debris. AEM® will not warrant its powder coating if the finish has been cleaned with a hydrocarbon-based solvent. The powder coating should only be cleaned with a mild soap and water solution. Proof of purchase of both the vehicle and AEM® intake system is required for redemption of a warranty claim.

This warranty is limited to the repair or replacement of the AEM® part. In no event shall this warranty exceed the original purchase price of the AEM® part nor shall AEM® be responsible for special, incidental or consequential damages or cost incurred due to the failure of this product. Warranty claims to AEM® must be transportation prepaid and accompanied with dated proof of purchase. This warranty applies only to the original purchaser of product and is nontransferable. Improper use or installation, use for racing, accident, abuse, unauthorized repairs or alterations voids this warranty. AEM® disclaims any liability for consequential damages due to breach of any written or implied warranty on all products manufactured by AEM®. Warranty returns will only be accepted by AEM® when accompanied by a valid Return Merchandise Authorization (RMA) number. Credit for defective products will be issued pending inspection. Product must be received by AEM® within 30 days of the date RMA is issued.

If you have a warranty issue, please call (800) 992-3000 and our customer service department will assist you. A proof of purchase is required for all AEM® warranty claims.

**Not legal for sale or use on any pollution controlled motor vehicle in California or states adopting California emission procedures. See [AEMIntakes.com](http://AEMIntakes.com) for CARB status on each part for a specific vehicle.**