



INSTALLATION INSTRUCTIONS

Part Number 55-1000 & 55-1001

This filter fits: **See current catalog for applications**

FREE K&N DECAL** To register your warranty, please see us online at knfilters.com/register. **FREE K&N DECAL

Congratulations, you have purchased the finest air filter that money can buy. With proper care, this filter will last you multiple seasons. The following procedures **MUST** be followed to ensure the proper fit and seal of the K&N Filtercharger®.

1. Remove the dirty air filter from the air filter housing.
2. Wipe out any dust or dirt from the air filter housing.
3. Install the Drycharger onto the K&N filter, ensuring that the wrap is secured over the lip. See Fig 1.
4. Install rubber adapter. See Fig 2a and 2b.
5. Tighten hose clamp nut until it is snug. Do not overtighten.
6. Using the supplied tube of air filter grease, liberally apply a coat of grease to the groove of the air filter. See Fig 3a and 3b.
7. Remove the rubber bonded washer from filter wing nut and install supplied rubber washer. See Fig. 4a and 4b.
8. Install the K&N FILTERCHARGER into the air filter housing and re-install the air filter housing cover.

NOTE: DO NOT RE-USE THE PLASTIC DIFFUSER, IT WILL NOT ALLOW THE K&N FILTER TO SEAL PROPERLY.

THESE INSTRUCTIONS MUST BE FOLLOWED EVERY TIME THE FILTER IS SERVICED, OTHERWISE THE FILTER MAY NOT SEAL, AND DAMAGE TO THE ENGINE COULD RESULT.

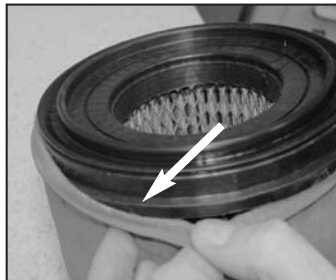


Fig. 1

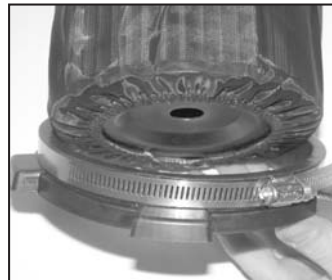


Fig. 2a



Fig. 2b

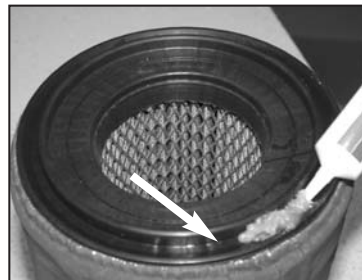


Fig. 3a

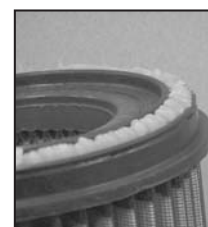


Fig. 3b



Fig. 4a



Fig. 4b