

INSTALLATION INSTRUCTIONS

57-1512

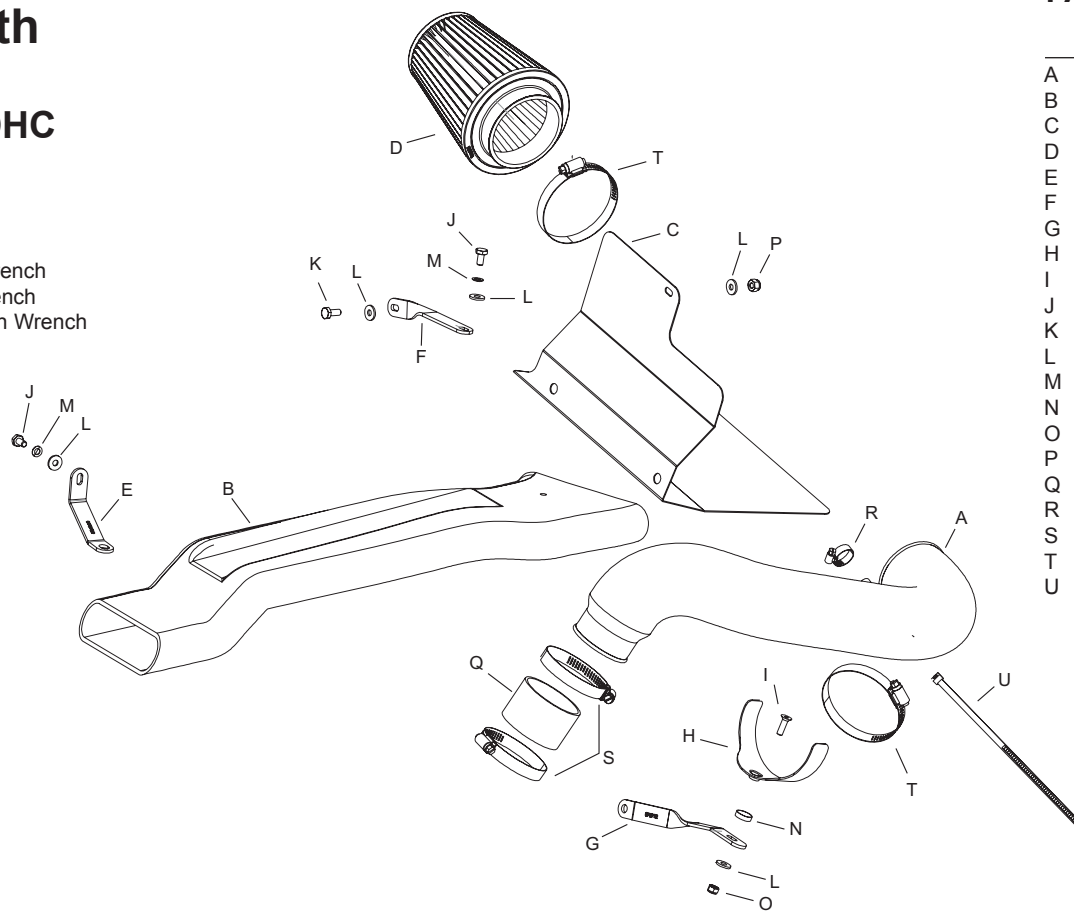
Dodge/Plymouth

Neon

1995-99 L4-2.0L SOHC

TOOLS NEEDED:

Tools Needed: 10mm Wrench
 Flat Blade Screwdriver 7/16" Wrench
 Pair of Pliers 4mm Allen Wrench
 Utility Knife
 Ratchet
 13mm Socket
 7/16" Socket


PARTS LIST:

Desc.	Part #	Qty.
A Intake tube	08758	1
B Fresh air tube	08759	1
C Heat shield	07414	1
D Filtercharger element	RF-1039	1
E "C" bracket	070782	1
F Short twist bracket	070772	1
G Long twist bracket	070792	1
H Saddle Bracket	078855	1
I Allen bolt	08376	1
J 1/4-20 x 1/2" hex bolt	08317	2
K 1/4-20 x 5/8" hex bolt	08315	1
L Flat washer	08275	5
M Wave washer	08174	2
N Nylock conical washer	08180	1
O 6mm nylock nut	07517	1
P 1/4-20 nylock nut	07553	1
Q Silicone hose	08727	1
R Hose clamp #6	08407	1
S Hose clamp #40	08554	2
T Hose clamp #48	08601	2
U Cable tie	21590	1

NOTE: FAILURE TO FOLLOW INSTALLATION INSTRUCTIONS AND NOT USING THE PROVIDED HARDWARE MAY DAMAGE THE INTAKE TUBE, THROTTLE BODY AND ENGINE.

TO START:

1. Turn the ignition OFF and disconnect the vehicle's negative battery cable.



2) Loosen and remove the wing nut that retains the fresh air duct.



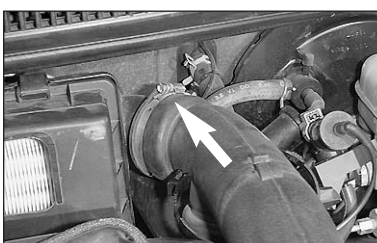
3) Remove the fresh air duct.



4) Detach the hose clip from the intake tube.



5) Disconnect the PCV line from the fitting on the valve cover.



6) Loosen the hose clamp on the intake tube at the airbox.



7) Loosen the hose clamp on the intake tube at the throttle body.



8) Remove the intake tube.



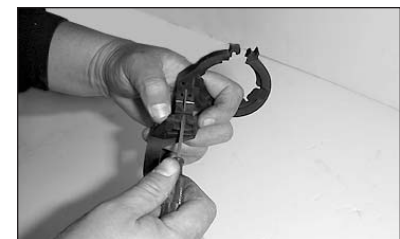
9) Loosen and remove the two bolts that retain the airbox mounting bracket.
Note: These bolts will be reused.



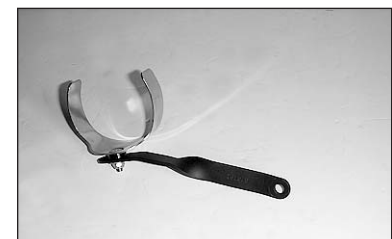
10) Remove the airbox assembly.



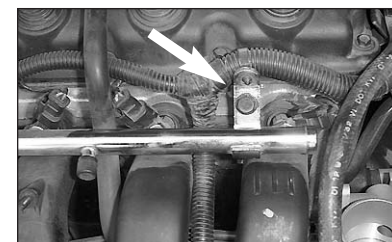
11) Remove the EGR valve from its retaining clip.



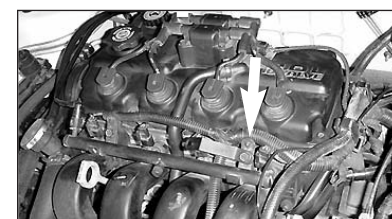
12) Detach the hose clip from the EGR valve retaining clip.



13) Assemble the saddle bracket and the long twist bracket using the hardware provided.



14) Loosen and remove the fuel rail retaining bolt.



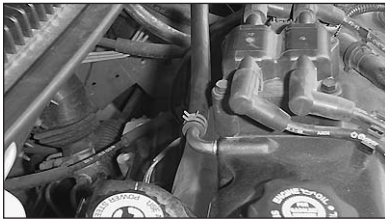
15) Attach the C-bend bracket to the fuel rail mounting point using the bolt removed in the previous step.
Note: Do not tighten completely at this time.



16) Disconnect the PCV hose from the stock intake tube.



17) Cut the OE PCV hose to 12" in length. Cutting 1-1/2" (A) off the large diameter end and 8" (B) off the small diameter end.



18) Attach the PCV hose to the fitting on the valve cover using the OE clamp.

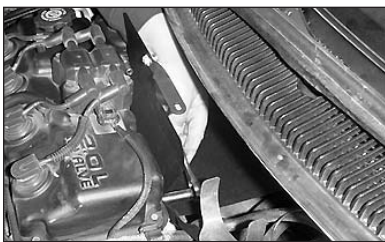


19) Attach the short twist bracket to the heat shield using the provided hardware.

Note: Do not tighten completely at this time.



20) Install the heat shield assembly.



21) Attach the heat shield and saddle bracket assembly to the original airbox mounting point using the bolts removed in step 9.



22) Attach the silicone hose to the throttle body using the hose clamp provided.



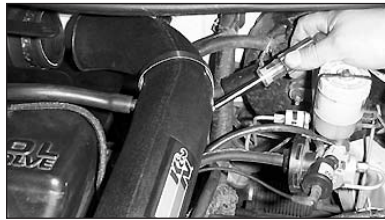
23) Slide the Filtercharger element underneath the cowling.



24) Install the K&N intake tube.



25) Attach the PCV hose to the fitting on the K&N intake tube using the hose clamp provided.



26) Secure the saddle bracket to the K&N intake tube.



27) Install the Filtercharger element onto the intake tube and tighten the hose clamp.



28) Tighten the hose clamp on the silicone hose at the intake tube.

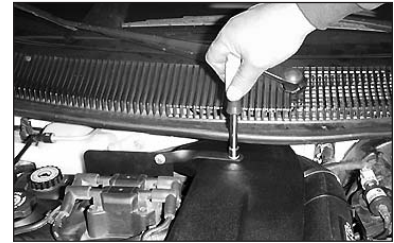
29) Reattach the EGR valve retaining clip onto the EGR valve.



30) Attach the EGR valve to the intake tube using the cable tie provided.



31) Install the K&N fresh air tube to check alignment of brackets. Remove tube and tighten the brackets.



32) Reinstall the fresh air tube and secure to the brackets using the hardware provided.

33. Reconnect the vehicle's negative battery cable. Double check to make sure everything is tight and properly positioned before starting the vehicle.

34. The C.A.R.B. exemption sticker, (attached), must be visible under the hood, so that an emissions inspector can see it when the vehicle is required to be tested for emissions. California requires testing every two years, other states may vary.

35. It will be necessary for all FIPK's to be checked periodically for realignment, clearance and tightening of all connections. Failure to follow the above instructions or proper maintenance may void warranty.

ROAD TESTING:

1. Start the engine with the transmission in neutral or park, and the parking brake engaged. Listen for air leaks or odd noises. For air leaks secure hoses and connections. For odd noises, find cause and repair before proceeding. This kit will function identically to the factory system except for being louder and much more responsive.

2. Test drive the vehicle. Listen for odd noises or rattles and fix as necessary.

3. If road test is fine, you can now enjoy the added power and performance from your kit.

4. K&N suggests checking the Filtercharger element periodically for excessive dirt build-up. When the element becomes covered in dirt (or once a year), service it according to the instructions on the Recharger service kit, part number 99-5050 or 99-5000.