



AIRCHARGER®

INSTALLATION INSTRUCTIONS

57-2507

FORD

1993-97 PROBE GT /

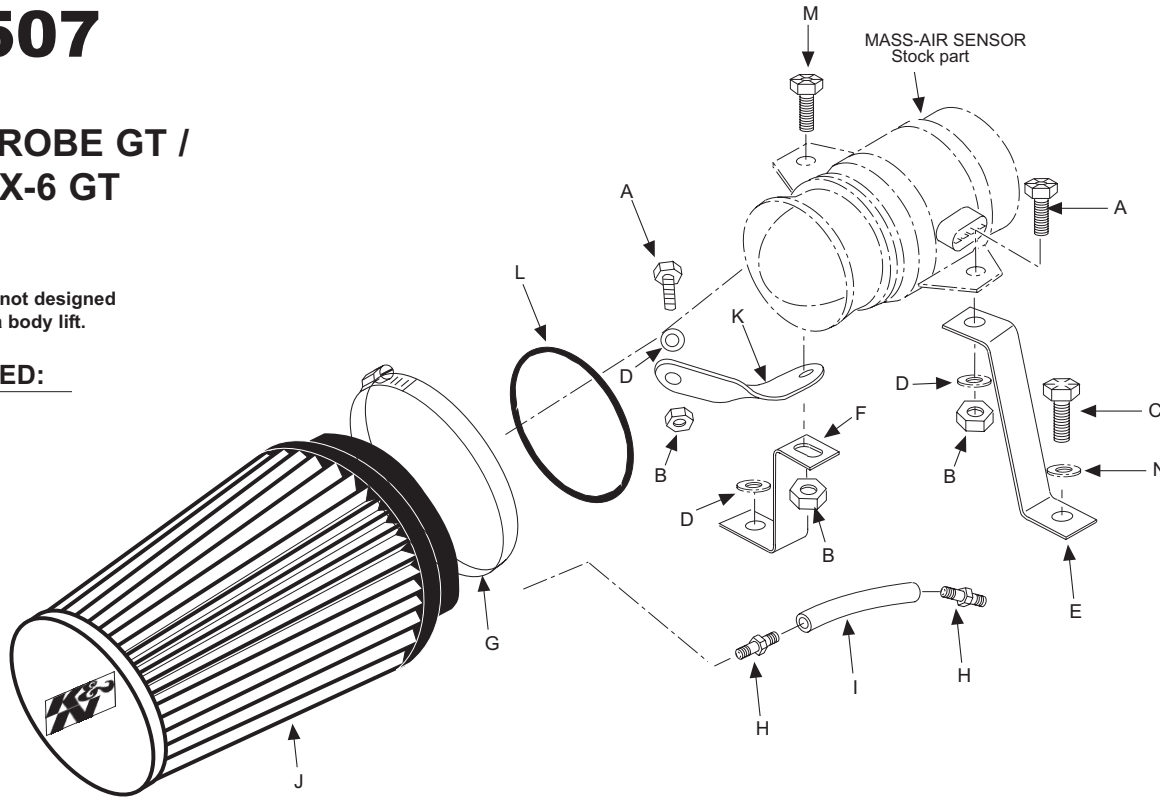
MAZDA MX-6 GT

V6-2.5L

NOTE: This kit was not designed to fit vehicles with a body lift.

TOOLS NEEDED:

13mm Wrench
 14mm Wrench
 17mm Wrench
 10mm socket
 15mm socket
 17mm socket
 4mm Allen Wrench
 5/16" Wrench
 7/16" Wrench
 Ratchet
 Drill
 Drill bit 3/16"



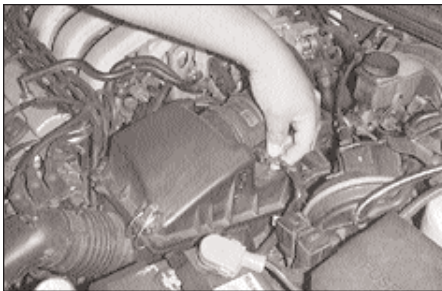
PARTS LIST:

Desc.	QTY.	Part #
A bolt; 6mm-1.00x25mm	2	07852
B nut; 6mm nylock, hex	3	07553
C bolt; 8mm-1.25x16mm	1	07844
D washer; 1/4" id x 5/8" od	3	08275
E bracket; long "Z"	1	07956
F bracket; short "Z"	1	07958
G hose clamp #52	1	08610
H hose; barb, 3/16"x3/16"	2	08703
I hose; 3/16" id, rubber 7"L	1	08707
J filter	1	RF-1025
K bracket; twist	1	07083
L o-ring; 3-1/8" od, 3/16"	1	07754
M bolt; 6mm-1.00x25mm allen	1	07859
N washer; 8mm wave	1	08239

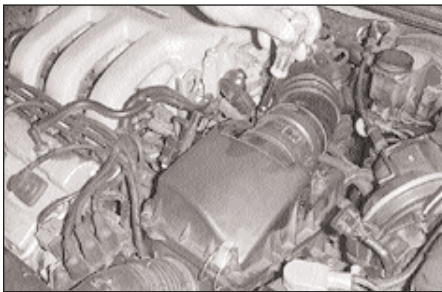
NOTE: FAILURE TO FOLLOW INSTALLATION INSTRUCTIONS AND NOT USING THE PROVIDED HARDWARE MAY DAMAGE THE INTAKE TUBE, THROTTLE BODY AND ENGINE.

TO START:

1. Turn the ignition OFF and disconnect the vehicle's negative battery cable.



2. Disconnect the mass air sensor electrical connection.



3. Loosen the hose clamps on the intake hose at the throttle body and mass air sensor.



4. Using a 10mm socket, loosen and remove the bolt that holds the vacuum switch to the airbox lid.



5. Release the airbox clips and remove the airbox lid.



6. Using a 12mm socket, loosen and remove the bolt and the two nuts that hold the airbox base in place.



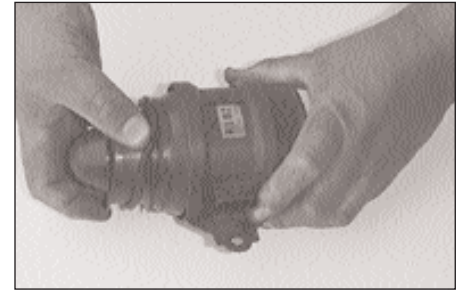
7. Detach the air inlet boot and remove the airbox from the engine compartment.



8. Remove one of the factory spacer/grommet from the airbox base as shown and reinstall the factory spacer/grommet onto the stud closest to the throttle body.



9. Using a 10mm socket, loosen bolts and remove the mass air sensor from the airbox lid as shown.



10. Place the provided o-ring into the groove on the mass air sensor as shown.



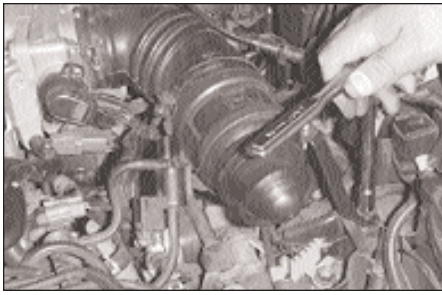
11. Using the hardware provided, attach the short "Z" bracket to the mass air sensor and tighten as shown.



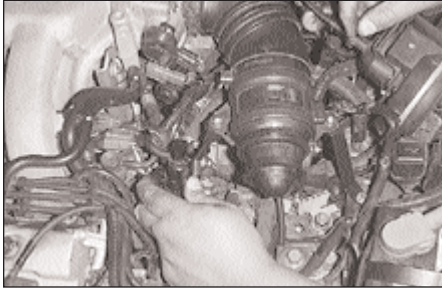
12. Using the hardware provided, attach the short "Z" bracket and twist bracket to the mass air sensor as shown.
NOTE: Do not tighten completely.



13. Slide the mass air sensor into the factory intake hose, line up the brackets as shown and tighten the hose clamps on the intake hose throttle body and the mass air sensor.



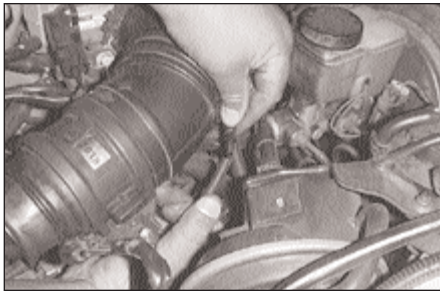
14. Using the 8mm bolt provided and the factory nut, secure the brackets to the original airbox mounting locations, align and tighten as shown.



15. Using the hardware provided, attach the vacuum switch to the bracket and tighten as shown.



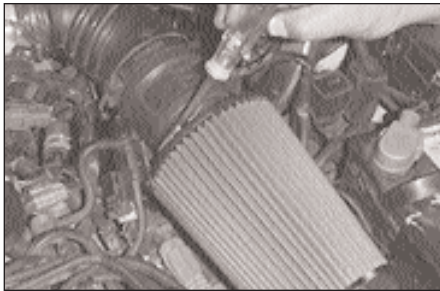
16. Insert the hose mender into both the provided vacuum hose and the existing factory vacuum hose.



17. Apply the open end of the provided vacuum hose onto the existing factory vacuum hose and hose mender.



18. Place the filtercharger element in the engine compartment. Insert the vacuum hose with hose mender attached into the small hole located on the element base as shown above.



19. Place the filtercharger element onto the mass air sensor flange.
NOTE: Be careful to not force the o-ring out of its groove. Secure the filtercharger element in place by tightening the hose clamp provided as shown.

20. Reconnect the vehicle's negative battery cable. Double check to make sure everything is tight and properly positioned before starting the vehicle.

21. The C.A.R.B. exemption sticker, (attached), must be visible under the hood so that an emissions inspector can see it when the vehicle is required to be tested for emissions. California requires testing every two years, other states may vary.

22. It will be necessary for all FIPK's to be checked periodically for realignment, clearance and tightening of all connections. Failure to follow the above instructions or proper maintenance may void warranty.

ROAD TESTING:

1. Start the engine with the transmission in neutral or park, and the parking brake engaged. Listen for air leaks or odd noises. For air leaks secure hoses and connections. For odd noises, find cause and repair before proceeding. This kit will function identically to the factory system except for being louder and much more responsive.

2. Test drive the vehicle. Listen for odd noises or rattles and fix as necessary.

3. If road test is fine, you can now enjoy the added power and performance from your kit.

4. K&N suggests checking the Filtercharger element periodically for excessive dirt build-up. When the element becomes covered in dirt (or once a year), service it according to the instructions on the Recharger service kit, part number 99-5050 or 99-5000.