



FUEL INJECTION PERFORMANCE KIT

FIPK

GENERATION II™

# INSTALLATION INSTRUCTIONS

## 57-3509

### Acura

### 1994-99 Integra GS-R

### L4-1.8L

#### TOOLS NEEDED:

- 7/16" wrench or socket
- 13mm socket
- 3/4" wrench or socket
- Flat blade screwdriver
- 5mm allen wrench
- 4mm allen wrench
- 10mm socket
- ratchet

#### TO START:

1) Turn the ignition OFF and disconnect the vehicle's negative battery cable.



2) Loosen the 3 bolts that retain the airbox.



3) Detach the intake tube from the airbox.



4) Remove the airbox.



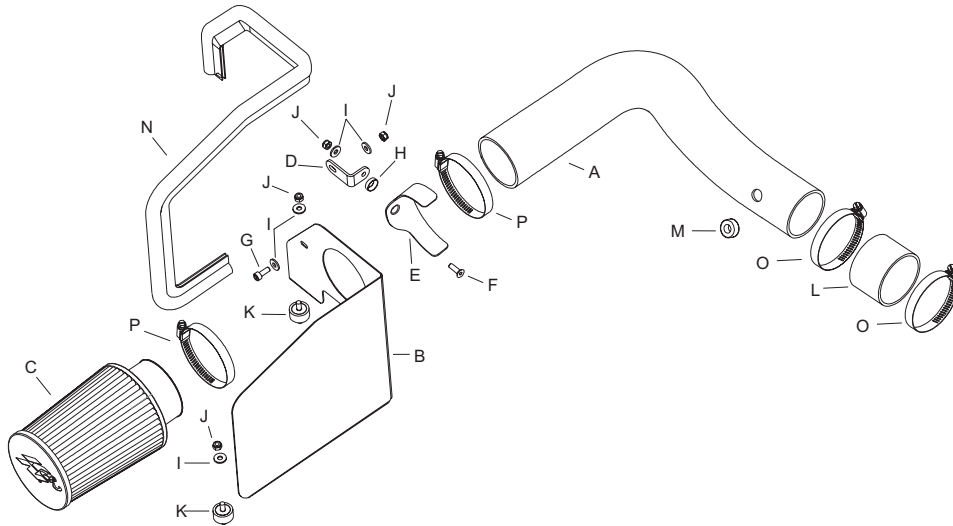
5) Remove the crankcase vent hard line from the intake tube.



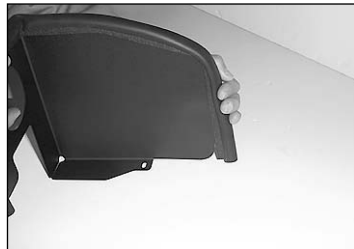
6) Loosen the hose clamp, detach the intake tube from the throttle body and remove.



7) Assemble the saddle bracket to the "L" bracket using the hardware provided.



8) Attach the saddle bracket assembly to the heat shield as shown.



9) Install the trim seal onto the heat shield as shown.



10) Install a rubber mounted stud into the upper airbox mounting point.



11) Install the second rubber mounted stud into the lower airbox mounting point.



12) Install the heat shield and secure with hardware provided.



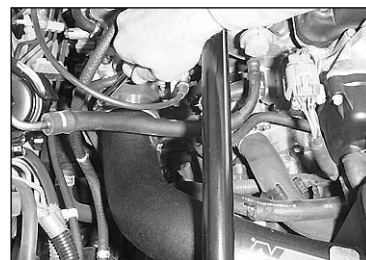
13) Insert the grommet into the small hole in the K&N intake tube.



14) Attach the silicone hose to the throttle body with a hose clamp.



15) Install the K&N intake tube through the heat shield.



16) Insert the K&N intake tube into the silicone hose.

**NOTE:** Do not tighten hose clamp completely at this time.



17) Insert the crankcase vent hard line into the grommet.



18) Secure the saddle bracket to the K&N intake tube with the hose clamp provided.



19) Install the Filtercharger element onto the K&N intake tube and tighten hose clamp.

#### PARTS LIST:

Desc.	Qty.	Part #
A Intake tube	1	08753
B Heat shield	1	07413
C Filtercharger element	1	RF-1030
D "L" bracket	1	08022
E Saddle bracket	1	078855
F Flat head allen bolt	1	08376
G Allen bolt	1	07818
H Conical washer	1	08180
I Flat washer	5	08275
J Nylock nut	4	07553
K Rubber mounted stud	2	07027
L Silicone hose	1	08756
M Grommet	1	08092
N Trim seal 32"L	1	102493
O Hose clamp #44	2	08577
P Hose clamp #48	2	08601

20) Re-connect the vehicle's negative battery cable. Double check to make sure everything is tight and properly positioned before starting the vehicle.

21) The C.A.R.B. exemption sticker, (attached), must be visible under the hood, so that an emissions inspector can see it when the vehicle is required to be tested for emissions. California requires testing every two years, other states may vary.

22) It will be necessary for all FIPK's to be checked periodically for realignment, clearance and tightening of all connections. Failure to follow the above instructions or proper maintenance may void warranty.

#### ROAD TESTING:

1. Start the engine with the transmission in neutral or park, and the parking brake engaged. Listen for air leaks or odd noises. For air leaks secure hoses and connections. For odd noises, find cause and repair before proceeding. This kit will function identically to the factory system except for being louder and much more responsive.

2. Test drive the vehicle. Listen for odd noises or rattles and fix as necessary.

3. If road test is fine, you can now enjoy the added power and performance from your kit.

4. K&N suggests checking the Filtercharger element periodically for excessive dirt build-up. When the element becomes covered in dirt (or once a year), service it according to the instructions on the Recharger service kit, part number 99-5050 or 99-5000.

**\*FREE K&N DECAL To register your warranty, please see us online at [knfilters.com/register](http://knfilters.com/register). FREE K&N DECAL\***