



AIRCHARGER®

INSTALLATION INSTRUCTIONS

63-1532

Dodge

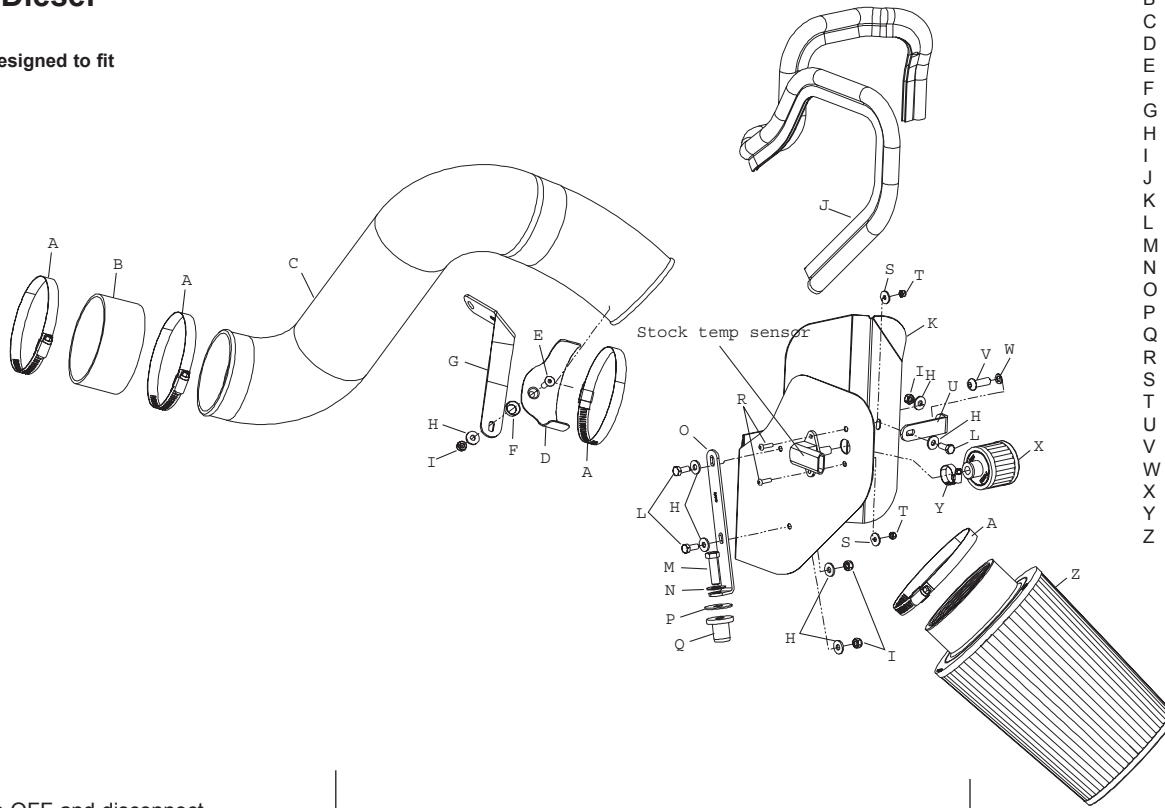
2005-07 Ram 2500, 3500

L6-5.9L Turbo Diesel

NOTE: This kit was not designed to fit vehicles with a body lift

TOOLS NEEDED:

- Flat blade screwdriver
- 5mm allen wrench
- 2.5mm allen wrench
- 9/32" socket
- 10mm socket
- Ratchet
- 10mm wrench
- 13mm wrench
- 14mm wrench
- 15mm wrench

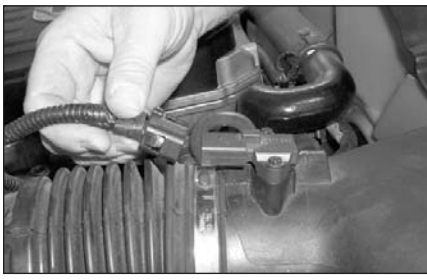


PARTS LIST:

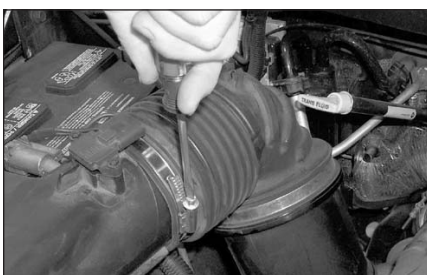
Description	Qty.	P/N
A	4	08645
B	1	08761
C	1	087084
D	1	078855
E	1	08376
F	1	08180
G	1	07160
H	7	08275
I	4	07553
J	1	102487
K	1	07486
L	3	07703
M	1	07779
N	1	08134
O	1	07159
P	1	08126
Q	1	08163
R	2	07793
S	2	08278
T	2	07501
U	1	07158
V	1	07748
W	1	08239
X	1	62-1320
Y	1	08407
Z	1	RC-4780

TO START:

1. Turn the ignition OFF and disconnect the vehicle's negative battery cable.



2. Disconnect the air temp. sensor electrical connection.



3. Loosen the hose clamps at the turbo inlet and the airbox outlet as shown.



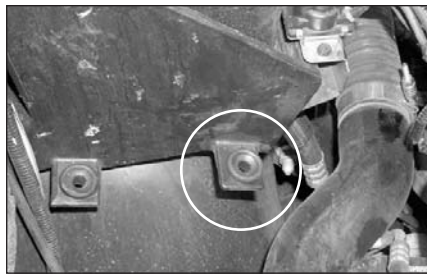
4. Remove the intake tube from the vehicle as shown.



5. Loosen and remove the 10mm nut that retains the airbox to the vehicle.



6. Remove the complete airbox assembly from the vehicle as shown.



7. Remove the airbox mounting grommet as shown.



8. Install the large "L" bracket onto the heat shield with the provided hardware.
NOTE: Do not tighten completely.



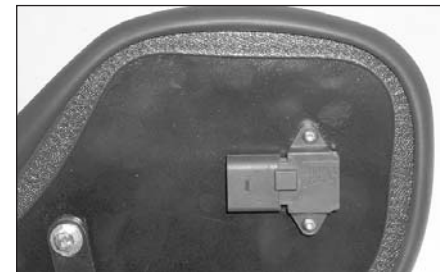
9. Install the short "L" bracket onto the heat shield with the provided hardware.
NOTE: Do not tighten completely.



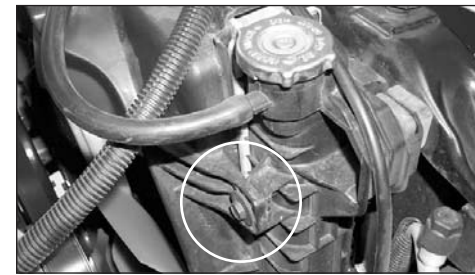
10. Install the edge trim onto the heat shield as shown.



11. Remove the temp sensor from the airbox lid using an 9/32 socket as shown.



12. Install the temp sensor onto the heat shield with the provided hardware as shown.



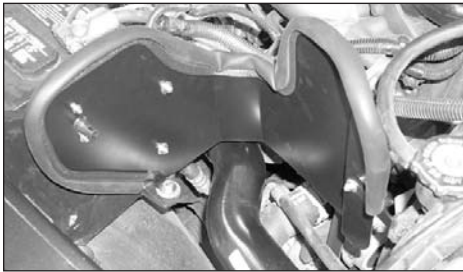
13. Remove the bolt that retains the fan shroud to the radiator.



14. Install the nut onto the airbox mounting tab as shown.



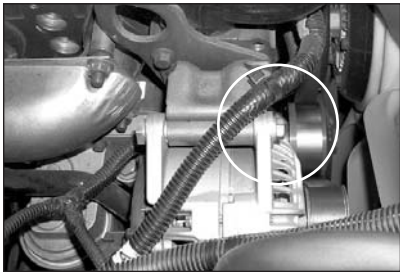
15. Reconnect the air temp sensor electrical connection as shown.



16. Install the heat shield onto the vehicle with the provided hardware. **NOTE: Use the 8mm bolt to fasten the heat shield to the fan shroud.**



17. Assemble the saddle bracket onto the "L" bracket using the provided hardware.



18. Remove the upper alternator bolt.



19. Install the saddle bracket assembly onto the alternator with the bolt that was removed in the previous step.



20. Install the silicone hose (08761) onto the turbo with the provided hose clamp.



21. Remove the filter mender and grommet from the stock airbox lid as shown.



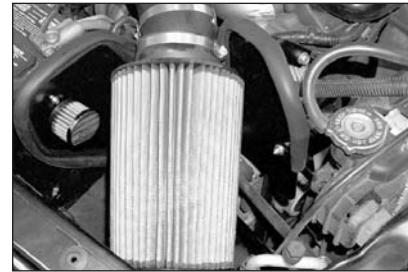
22. Install the intake tube onto the turbo inlet, then align with the saddle bracket. Attach the saddle bracket to the intake tube with the provided hose clamp, adjust the bracket to achieve the appropriate clearance for the intake tube before tightening.



23. Install the grommet and filter mender that was removed in step 21 onto the K&N filter-charger as shown.



24. Install the K&N filter onto the air temp sensor as shown.



25. Install the K&N filter onto the intake tube as shown.



26. Reconnect the vehicle's negative battery cable. Double check to make sure everything is tight and properly positioned before starting the vehicle.

27. It will be necessary for all Aircharger's to be checked periodically for realignment, clearance and tightening of all connections. Failure to follow the above instructions or proper maintenance may void warranty.

ROAD TESTING:

1. Start the engine with the transmission in neutral or park, and the parking brake engaged. Listen for air leaks or odd noises. For air leaks secure hoses and connections. For odd noises, find cause and repair before proceeding. This kit will function identically to the factory system except for being louder and much more responsive.
2. Test drive the vehicle. Listen for odd noises or rattles and fix as necessary.
3. If road test is fine, you can now enjoy the added power and performance from your kit.
4. K&N suggests checking the Filtercharger element periodically for excessive dirt build-up. When the element becomes covered in dirt (or once a year), service it according to the instructions on the Recharger service kit, part number 99-5050 or 99-5000.

IMPORTANT:

Service air filter according to the K&N cleaning instructions (99-5050) when the indicator on the restriction gauge is in the 35 to 65% range. On vehicles that come with a numbered restrictor gauge, service the air filter when the indicator on the restriction gauge is in the 15 to 20" range. Do not run the vehicle with the indicator above the 65% or 20" range, as damage to the air filter and or the engine could result.

FREE K&N DECAL To register your warranty, please see us online at knfilters.com/register. FREE K&N DECAL