



AIRCHARGER®

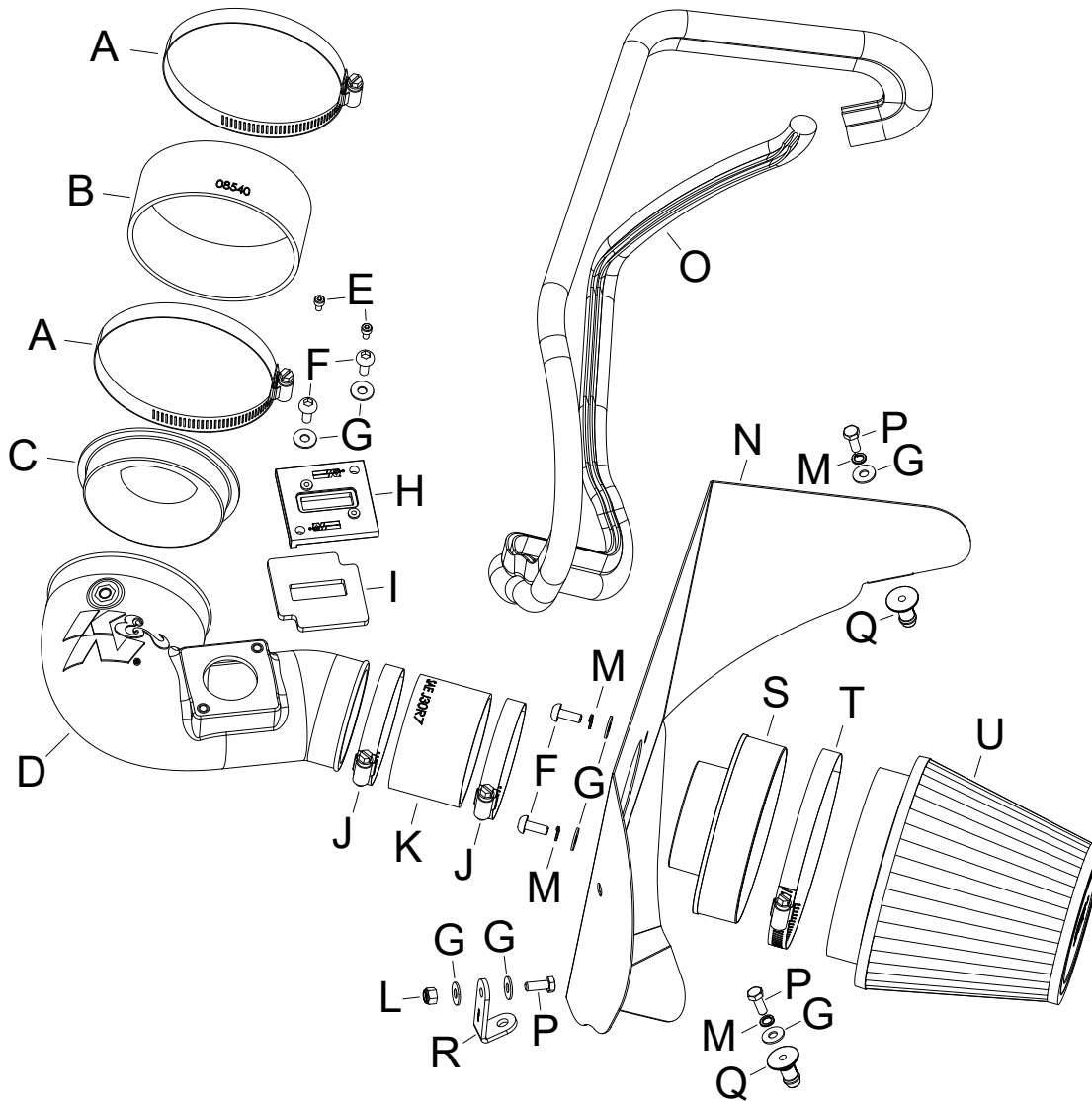
HIGH-FLOW INTAKE KITS

NOT LEGAL FOR SALE OR USE ON ANY POLLUTION CONTROLLED MOTOR VEHICLE IN CALIFORNIA OR STATES ADOPTING CALIFORNIA EMISSION PROCEDURES.

See knfilters.com for CARB status on each part for a specific vehicle

INSTALLATION INSTRUCTIONS

63-3105
CHEVROLET
2016-17 Camaro
L4-2.0L Turbo



TOOLS NEEDED:

- flat blade screw driver
- ratchet
- extension
- 10mm socket
- 10mm wrench
- pliers
- 4mm allen
- 3mm allen
- t20 torx

PARTS LIST:

Description	Qty.	Part #	Description	Qty.	Part #	Description	Qty.	Part #
A HOSE CLAMP #72	2	08671	H ADAPTOR; 57-2556, NYLON 6/6	1	21515	O EDGE TRIM (56")	1	102490
B HOSE; 4-1/2" ID X 1-3/4" L	1	08540	I GASKET; 57-2556, 3/16 PORON	1	09069	P BOLT; 6MM-1.00 X 16MM, SS	3	07812
C VENTURI; TUBE INSERT	1	088026	J HOSE CLAMP #48	2	08601	Q MOUNT, PLASTIC AIRBOX	2	8-186-1
D INTAKE TUBE (MB)	1	087354A	K HOSE; 3" ID X 2" L	1	08711	R BRACKET; "L", 63-3092, STL	1	064340
E BOLT; M4 - 0.07 8MM, A/H CAP	2	07733	L NUT; 6MM NYLOCK, HEXHEAD	1	07512	S ADAPTER; FILTER, 3.0"OD	1	21569
F BOLT; M6 X 1.00 X 16MM, SS	4	07730	M WASHER, M6 SPLIT LOCK ZINC	4	1-3025	T HOSE CLAMP; #80	1	08694
G WASHER; 6MM FLAT, SS	8	08269	N HEAT SHIELD	1	073258	U FILTER CHARGER	1	RU-5147

If you need any assistance please call 1-800-858-3333 to speak with a representative in our Customer Service Center before returning the product.

NOTE: FAILURE TO FOLLOW INSTALLATION INSTRUCTIONS AND NOT USING THE PROVIDED HARDWARE MAY DAMAGE THE INTAKE TUBE, THROTTLE BODY AND ENGINE.

TO START:

1. Turn off the ignition and disconnect the negative battery cable.
NOTE: Disconnecting the negative battery cable erases pre-programmed electronic memories. Write down all memory settings before disconnecting the negative battery cable. Some radios will require an anti-theft code to be entered after the battery is reconnected. The anti-theft code is typically supplied with your owner's manual. In the event your vehicles anti-theft code cannot be recovered, contact an authorized dealership to obtain your vehicles anti-theft code.



2. Disconnect the mass air sensor electrical connection and unhook the wiring harness from the intake tube.



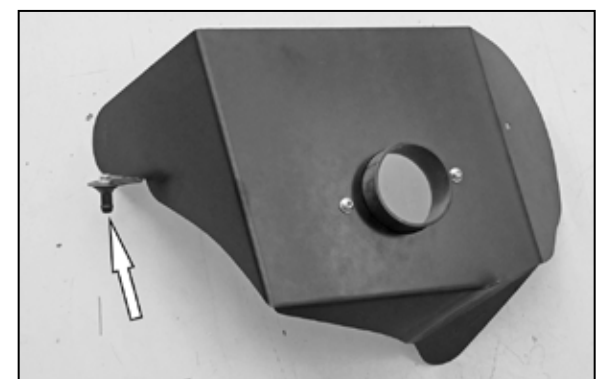
3. Loosen the two hose clamps that secure the intake tube to the turbo inlet and air filter housing. And then remove the intake tube from the vehicle.



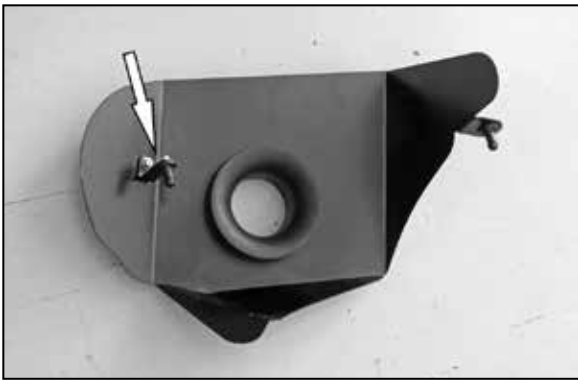
4. Lift the air filter housing to dislodge it from mount grommets and then remove the housing from the vehicle.
NOTE: K&N Engineering, Inc., recommends that customers do not discard factory air intake.



5. Install the provided filter adapter into the heat shield and secure with the provided hardware.



6. Install one of the provided mounting studs onto the heat shield and secure with the provided hardware.



7. Install the remaining mounting stud onto the long leg of the provided "L" bracket (064340) and secure with the provided hardware, then install the assembly onto the heat shield as shown using the provided hardware.



8. Install the edge trim onto the heat shield as shown. Some trimming of the edge trim will be necessary.



9. Install the K&N® air filter onto the filter adapter and secure with the provided hose clamp.



10. Install the heat shield/filter assembly into the vehicle so the mounting studs insert into the mounting grommets.



11. Install the provided coupler hose (08540) onto the turbo inlet chamber and secure with the provided hose clamp.



12. Install the provided coupler hose (08711) onto the filter adapter and secure with the provided hose clamp.



13. Install the provided gasket onto the bottom of the mass air sensor adapter.



14. Remove the mass air sensor from the factory air filter housing.



15. Install the mass air sensor into the K&N® mass air sensor adapter and secure with the provided hardware.



16. Install the mass air sensor assembly into the K&N® intake tube and secure with the provided hardware.

NOTE: Be sure to install the sensor in the correct direction, the opening should be pointed towards the small end of the tube.



17. Install the air diffuser into the K&N® intake tube so the radiused surface is located inside the tube.



18. Install the Intake tube into the coupler at the filter adapter and then into the coupler at the turbo inlet chamber, adjust the tube and heat shield for best fit and then secure with the provided hose clamps. Reconnect the mass air sensor electrical connection and secure the wiring harness to the insert in the intake tube.



19. Reconnect the vehicle's negative battery cable. Double check to make sure everything is tight and properly positioned before starting the vehicle.

20. It will be necessary for all K&N® high flow intake systems to be checked periodically for realignment, clearance and tightening of all connections. Failure to follow the above instructions or proper maintenance may void warranty.

ROAD TESTING:

1. Start the engine with the transmission in neutral or park, and the parking brake engaged. Listen for air leaks or odd noises. For air leaks secure hoses and connections. For odd noises, find cause and repair before proceeding. This kit will function identically to the factory system except for being louder and much more responsive.

2. Test drive the vehicle. Listen for odd noises or rattles and fix as necessary.

3. If road test is fine, you can now enjoy the added power and performance from your kit.

4. K&N Engineering, Inc., requires cleaning the intake system's air filter element every 100,000 miles. When used in dusty or off-road environments, our filters will require cleaning more often. We recommend that you visually inspect your filter once every 25,000 miles to determine if the screen is still visible. When the screen is no longer visible some place on the filter element, it is time to clean it. To clean and re-oil, purchase our filter Recharger® service kit, part number 99-5050 or 99-5000 and follow the easy instructions.

NOT LEGAL FOR SALE OR USE ON ANY POLLUTION CONTROLLED MOTOR VEHICLE IN CALIFORNIA OR STATES ADOPTING CALIFORNIA EMISSION PROCEDURES.

See knfilters.com for CARB status on each part for a specific vehicle