



# TYPHOON INTAKE SYSTEMS

NOT LEGAL FOR SALE OR USE ON ANY POLLUTION CONTROLLED MOTOR VEHICLE IN CALIFORNIA OR STATES ADOPTING CALIFORNIA EMISSION PROCEDURES.

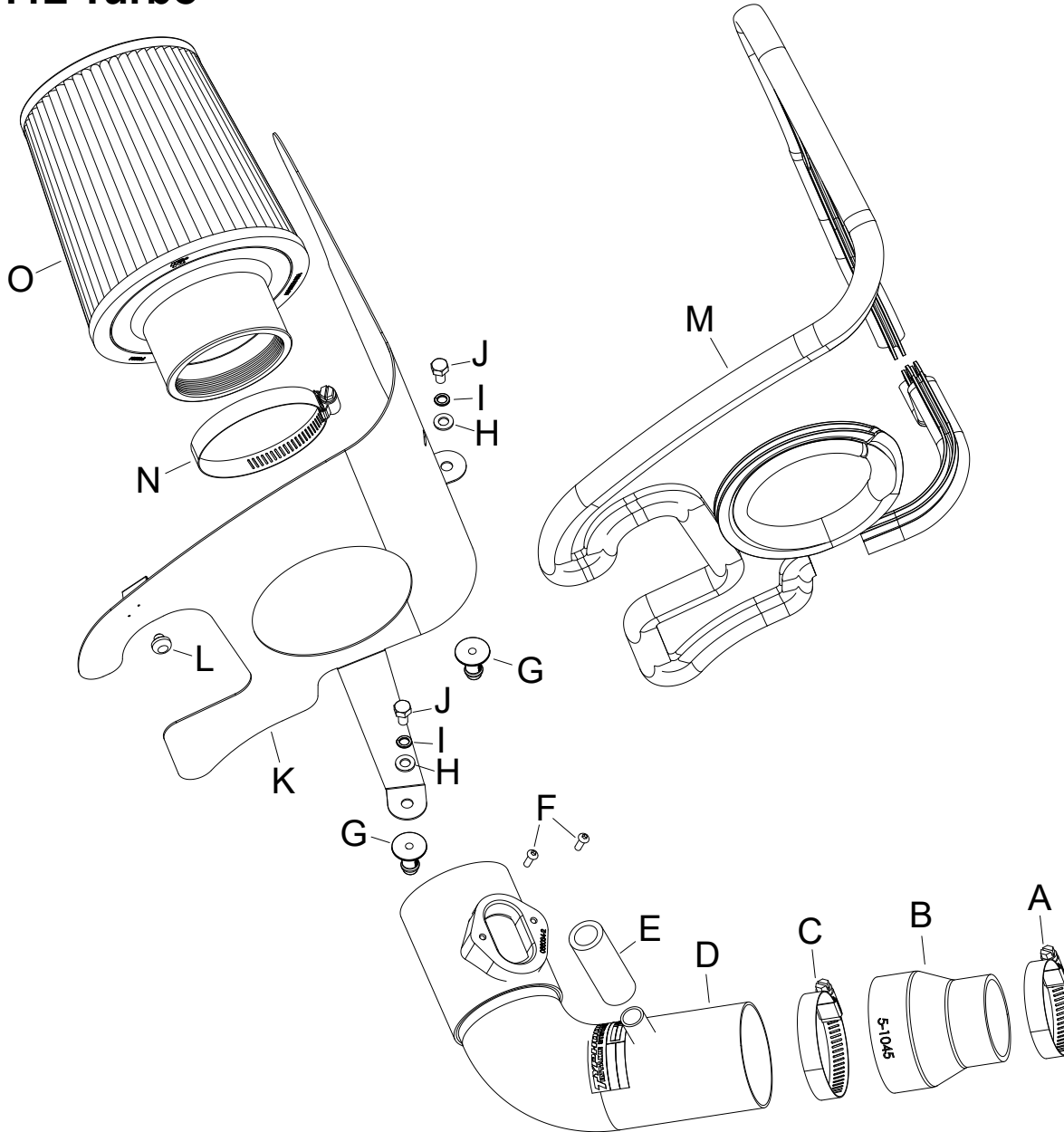
See knfilters.com for CARB status on each part for a specific vehicle

## INSTALLATION INSTRUCTIONS

**69-4537TS**  
**CHEVROLET**  
**2017 Cruze**  
**L4-1.4L Turbo**

### TOOLS NEEDED:

- flat blade screw driver
- ratchet
- extension
- 10mm socket
- t25 torx
- needle nose pliers
- side cutters
- 3mm allen key



### PARTS LIST:

Description	Qty.	Part #
A HOSE CLAMP #32	1	08507
B HOSE; 2-3/4" TO 2" ID X 3" L	1	5-1045
C HOSE CLAMP #44 STAINLESS	1	08560
D INTAKE TUBE	1	27680
E HOSE; 5/8"ID X 2"L	1	5-7002
F SCREW; M4- .7 X 12, BUTTON	2	07726
G MOUNT, PLASTIC AIRBOX	2	8-186-1
H WASHER; 6MM FLAT, SS	2	08269
I WASHER, M6 SPLIT LOCK ZINC	2	1-3025
J BOLT; M6 X 1.00 X 12MM, SS	2	07727
K HEAT SHIELD	1	20-8587
L GROMMET PLUG, 1/4"	1	784630
M EDGE TRIM (83")	1	102503
N HOSE CLAMP; #48	1	08601
O FILTER CHARGER	1	RU-4730

If you need any assistance please call 1-800-858-3333 to speak with a representative in our Customer Service Center before returning the product.

**NOTE: FAILURE TO FOLLOW INSTALLATION INSTRUCTIONS AND NOT USING THE PROVIDED HARDWARE MAY DAMAGE THE INTAKE TUBE, THROTTLE BODY AND ENGINE.**

### TO START:

1. Turn off the ignition and disconnect the negative battery cable.  
**NOTE: Disconnecting the negative battery cable erases pre-programmed electronic memories. Write down all memory settings before disconnecting the negative battery cable. Some radios will require an anti-theft code to be entered after the battery is reconnected. The anti-theft code is typically supplied with your owner's manual. In the event your vehicles anti-theft code cannot be recovered, contact an authorized dealership to obtain your vehicles anti-theft code.**



2. Remove the retaining pin the secures the fresh air intake duct.



3. Lift up the fresh air intake duct to dislodge it from the factory air filter housing and then remove it from the vehicle.



4. Disconnect the mass air sensor electrical connection.



5. Disconnect the crank case vent chamber from the factory intake tube. Loosen the hose clamp that secures the intake tube to the turbo inlet.



6. Lift up and remove the complete stock intake system from the vehicle.  
**NOTE: K&N Engineering, Inc., recommends that customers do not discard factory air intake.**



7. Be sure the factory air filter housing grommets are still in place on the mounts.



8. Remove the mass air sensor from the factory air filter housing.



9. Install the mass air sensor into the K&N® intake tube and secure with the proper hardware.



10. Install the provided crankcase vent hose onto the K&N® intake tube as shown.



11. Cut the provided edge trim into three sections, one will be 52" long, one will be 13-1/2" long and the last one will be 11" long. Install the edge trim onto the heat shield as shown.



12. Install the two provided mounting studs onto the heat shield where shown.



13. Install the rubber plug provided into the heat shield where shown.



14. Install the factory fresh air duct into the heat shield as shown.



15. Reposition the crank case vent hose and chamber above the coolant by-pass hose.



16. Install the provide coupler hose (5-1045) onto the turbo and secure with the provided hose clamp.



17. Install the heat shield so the fresh air intake goes into to its correct position and the mounting studs engage with the factory grommets. Reinstall the fresh air retaining pin remove in step #2.



18. Install the crank case vent breather chamber into the hose installed onto the K&N® intake tube.



19. Reconnect the mass air sensor electrical connection.



20. Install the K&N® filter and secure with the provided hose clamp.

**NOTE: Drycharger® air filter wrap; part # RX-4730DK is available to purchase separately. To learn more about Drycharger® filter wraps or look up color availability please visit <http://www.knfilters.com>®.**



21. Reconnect the vehicle's negative battery cable. Double check to make sure everything is tight and properly positioned before starting the vehicle.

22. It will be necessary for all K&N® high flow intake systems to be checked periodically for realignment, clearance and tightening of all connections. Failure to follow the above instructions or proper maintenance may void warranty.

#### ROAD TESTING:

1. Start the engine with the transmission in neutral or park, and the parking brake engaged. Listen for air leaks or odd noises. For air leaks secure hoses and connections. For odd noises, find cause and repair before proceeding. This kit will function identically to the factory system except for being louder and much more responsive.

2. Test drive the vehicle. Listen for odd noises or rattles and fix as necessary.

3. If road test is fine, you can now enjoy the added power and performance from your kit.

4. K&N Engineering, Inc., requires cleaning the intake system's air filter element every 100,000 miles. When used in dusty or off-road environments, our filters will require cleaning more often. We recommend that you visually inspect your filter once every 25,000 miles to determine if the screen is still visible. When the screen is no longer visible some place on the filter element, it is time to clean it. To clean and re-oil, purchase our filter Recharger® service kit, part number 99-5050 or 99-5000 and follow the easy instructions.

**NOT LEGAL FOR SALE OR USE ON ANY POLLUTION CONTROLLED MOTOR VEHICLE IN CALIFORNIA OR STATES ADOPTING CALIFORNIA EMISSION PROCEDURES.**

See [knfilters.com](http://knfilters.com) for CARB status on each part for a specific vehicle