

**Warning:** Please follow these installation instructions carefully. The K&N Drycharger included in this kit must be installed on the K&N air filter when used with a K&N Typhoon Cold Air Intake System. The K&N Typhoon Intake System is a performance product that can be used safely during mild weather conditions. During hard and inclement weather conditions, you must convert your Cold Air Intake System into a short ram configuration, or return your vehicle to the stock OEM airbox and intake tract configuration. Failure to follow these instructions can void your warranty.

## INSTALLATION INSTRUCTIONS

### 69-7503

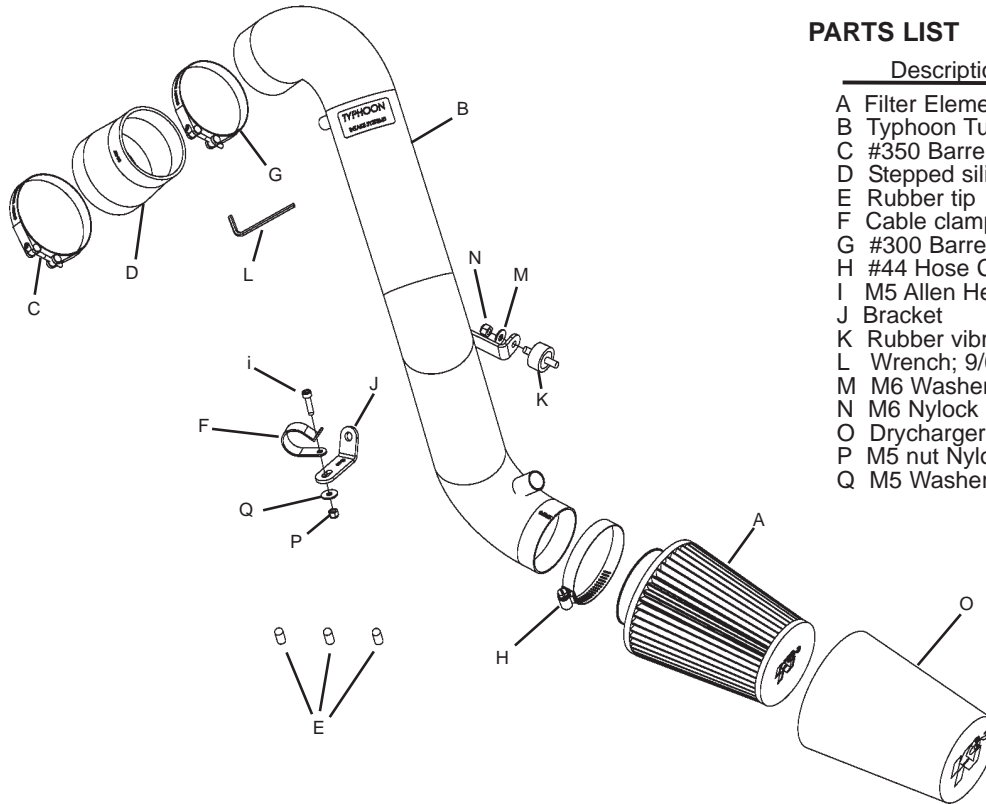
### PEUGEOT

2003-2006, 206 RC/206 GTi 180

2.0L L4 16v, 177 PS

#### Tools Needed:

8 mm Spanner  
10 mm Spanner  
Side-cutting pliers  
Car Jack  
Pair of Axle Stands  
Torx 20 screw driver  
10 mm Socket wrench  
11 mm Socket wrench  
17 mm Wheel brace  
7mm Socket spanner  
Flat blade screwdriver



#### PARTS LIST

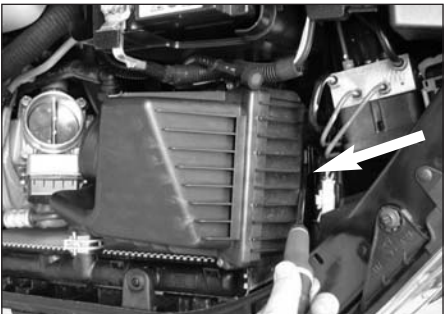
Description	Qty.	P/N
A Filter Element	1	RC-9310
B Typhoon Tube	1	27375
C #350 Barrel Clamp	1	084064
D Stepped silicone hose	1	08437
E Rubber tip	3	08282
F Cable clamp	1	16705
G #300 Barrel Clamp	1	084062
H #44 Hose Clamp	1	08577
I M5 Allen Head Bolt	1	08320
J Bracket	1	06469
K Rubber vibration stud	1	07027
L Wrench; 9/64 Allen	1	69802
M M6 Washer	1	08269
N M6 Nylock Nut	1	07512
O Drycharger Element	1	RC9310DK
P M5 nut Nylock Nut	1	07507
Q M5 Washer	1	08212

#### TO START:

1. Turn the ignition OFF and disconnect the vehicle's negative battery terminal.



2. Remove the breather hose from the intake tube as shown. Release the 2 hose clamps and remove the intake tube from between the air box and the throttle body.



3. Unclip the air box from the air box support bracket as shown.



4. Carefully remove the complete air box assembly from the vehicle.



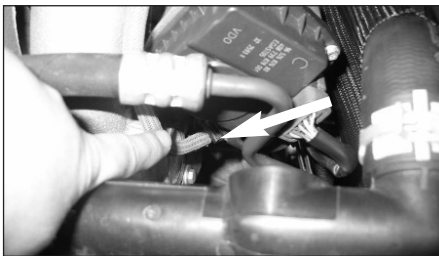
5. Undo the indicated bolt, then, remove the airbox mounting bracket from the vehicle.



6. Remove the battery air breather tube from the vehicle.



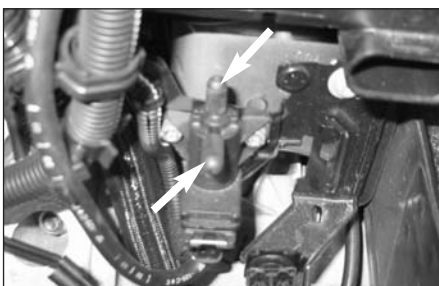
7. Remove the two vacuum hoses from the electronic vacuum switch as shown.



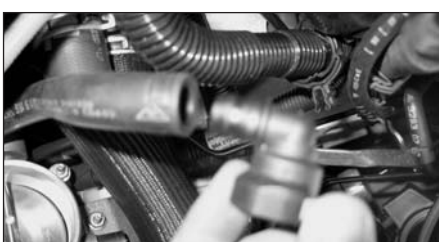
8. Remove the vacuum connector from the intake manifold. (This is the gray one.)



9. Remove the small vacuum hose and fit a rubber tip supplied onto the connector as shown. Re-install the connector to the intake manifold.



10. Fit two rubber tips supplied onto the electronic vacuum switch from step 7 as shown.



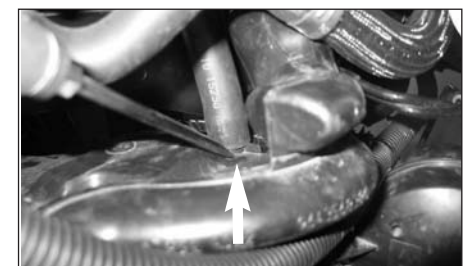
11. Remove the elbow connector from the battery air breather hose from step 2.



12. Taking the necessary safety precautions raise the front of the vehicle and support it with axle stands. Now remove the wheel and wheel arch liner from the vehicle as shown.



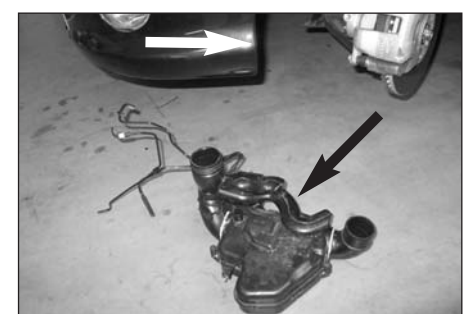
13. Unclip the intake snorkel from the resonator box.



14. Carefully unclip and remove the air pump hose from the resonator box as shown.



15. Remove the vacuum hose from the top of the air intake assembly and remove the complete air intake assembly from the vehicle.



16. Carefully remove the complete resonator box assembly from underneath the vehicle by pulling it backwards.

Continued on reverse side!



17. Remove the bolts securing the air pump to the vehicle, so that the air pump can be moved out of the way.



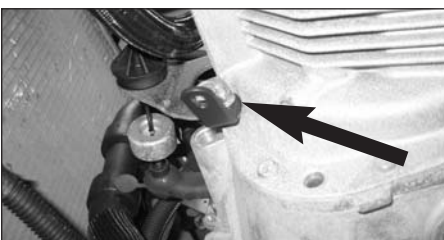
18. Unclip and remove the cold air intake tube located in the wheel arch from the vehicle.



19. Unclip and remove the cold air intake tube from the vehicle.



20. Re-install the air pump using the original hardware as shown.



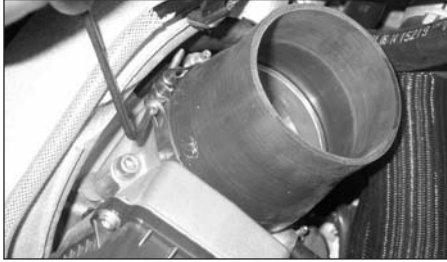
21. Remove the indicated nut from the gear box housing. Fit the bracket supplied onto the gear box housing using the original nut.



22. Fit the "P" cable clamp supplied around the wiring loom and mount it onto the bracket using the M5 allen head bolt, nut and washer supplied.



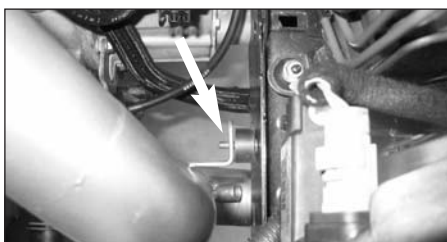
23. Screw the rubber vibration stud onto the air box mounting point from step 5 as shown.



24. Fit the silicone stepped hose onto the throttle body using the #350 barrel clamp supplied. To tighten the barrel clamp, use the small 9/64" Allen wrench provided.



25. Fit the K&N Typhoon intake tube into the silicone hose using the #300 barrel clamp supplied. (Do not fully tighten yet!) **NOTE:** always clean the inside of the tube first.



26. Align the tube weld-on bracket with the rubber mounting stud as shown and secure with an M6 nylock nut and M6 washer supplied. Do not fully tighten yet!



27. Fit the air pump hose onto the vent on the K&N Typhoon intake tube as shown.



28. Fit the filter onto the K&N Typhoon intake tube using the #44 hose clamp supplied.



29. Fit the Drycharger over the filter as shown. **NOTE:** The Drycharger's water repellent properties will last up to two years. See the parts list to re-order Drycharger if necessary.



30. Refit the wheel arch liner and the wheel to the vehicle. Torque the wheel up to factory specifications.



31. Fit the breather hose onto the vent on the K&N Typhoon intake tube as shown. Re-install the battery air breather tube which was removed in step 6 to the vehicle.



32. Align the intake tube for best fit and clearance, then, firmly tighten the hose clamp and M6 nut. To provide more clearance between the filter and the arch liner you can insert the tube further into the silicone hose.



33. Reconnect the negative battery terminal and double check that everything is tight and properly positioned before starting the vehicle.

34. Double check to make sure everything is tight and properly positioned before starting the vehicle.

35. It will be necessary for all Typhoons to be checked periodically for realignment, clearance and tightening of all connections. Failure to follow the above instructions or proper maintenance may void warranty.

#### ROAD TESTING:

1. Start the engine with the transmission in neutral or park, and the parking brake engaged. Listen for air leaks or odd noises. For air leaks secure hoses and connections. For odd noises, find cause and repair before proceeding. This kit will function identically to the factory system except for being louder and much more responsive.

2. Test drive the vehicle. Listen for odd noises or rattles and fix as necessary.

3. If road test is fine, you can now enjoy the added power and performance from your kit.

4. K&N suggests checking the Filtercharger element periodically for excessive dirt build-up. When the element becomes covered in dirt (or once a year), service it according to the instructions on the Recharger service kit, part number 99-5000 or 99-5050.

