

Warning: Please follow these installation instructions carefully. The K&N Drycharger included in this kit must be installed on the K&N air filter when used with a K&N Typhoon Cold Air Intake System. The K&N Typhoon Intake System is a performance product that can be used safely during mild weather conditions. During hard and inclement weather conditions, you must convert your Cold Air Intake System into a short ram configuration, or return your vehicle to the stock OEM airbox and intake tract configuration. Failure to follow these instructions can void your warranty.

INSTALLATION INSTRUCTIONS

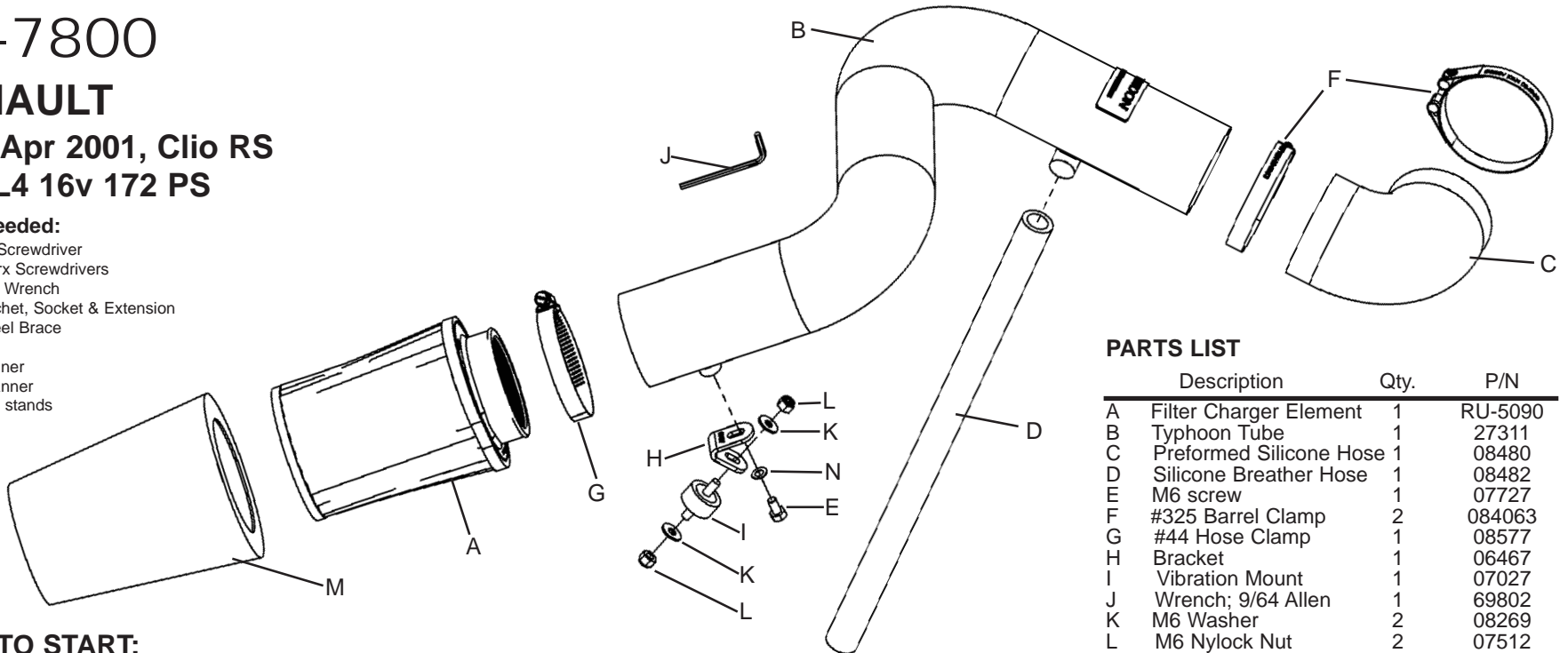
69-7800

RENAULT

2000-Apr 2001, Clio RS
2.0L L4 16v 172 PS

Tools Needed:

- Flat Blade Screwdriver
- 20 & 30 Torx Screwdrivers
- 4 mm Allen Wrench
- 14mm Ratchet, Socket & Extension
- 17mm Wheel Brace
- Car Jack
- 8 mm Spanner
- 10 mm Spanner
- Pair of axle stands



PARTS LIST

Description	Qty.	P/N
A Filter Charger Element	1	RU-5090
B Typhoon Tube	1	27311
C Preformed Silicone Hose	1	08480
D Silicone Breather Hose	1	08482
E M6 screw	1	07727
F #325 Barrel Clamp	2	084063
G #44 Hose Clamp	1	08577
H Bracket	1	06467
I Vibration Mount	1	07027
J Wrench; 9/64 Allen	1	69802
K M6 Washer	2	08269
L M6 Nylock Nut	2	07512
M Drycharger Element	1	RC-9310DK
N M6 Waved Washer	1	08277

TO START:

1. Turn the ignition OFF and disconnect the vehicle's negative battery cable.



2. Unbolt and remove the engine cover from the vehicle.



3. Disconnect & remove the IRV pipe as shown.



4. Unclip & remove the complete intake hose assembly.



5. Disconnect the 2 air box feed pipes from the air box as shown.



6. Unclip and remove the complete air box assembly from the vehicle.



7. Unbolt & remove the ECU support bracket as shown.



8. Disconnect first the negative, then the positive cable from the battery & remove the battery from the vehicle.



9. Unbolt & remove the air box support bracket and re-install the rear bolt.



10. Taking the necessary safety precautions raise the front of the vehicle and support it with axle stands. Now remove the L/H front wheel as shown.



11. Remove the L/H wheel arch liner.



12. Remove the intake pipe mounting bolt, which also secures the horn mounting bracket.



13. Remove the air box intake pipes from the vehicle. Re-install the horn mounting bracket removed in the previous step using its original bolt.



14. Fit the bracket onto the threaded standoff on the new intake pipe using the M6 bolt and M6 waved washer supplied. (do not fully tighten yet.)



15. Fit the vibration mount on to the bracket using an M6 nylock nut & washer supplied.



16. Fit the silicone elbow on to the intake pipe as shown, secure using a #325 barrel clamp supplied. Don't fully tighten yet!

Continued on reverse side!



17. Feed the intake tube into the wheel arch area. Locate the vibration mount into the hole in the inner wing, secure with an M6 nut and washer supplied. Don't fully tighten yet!

NOTE: Make sure the inside of the tube is completely clean first!



18. Fit the silicone hose on to the throttle housing using the #325 barrel clamp supplied. Don't fully tighten yet!



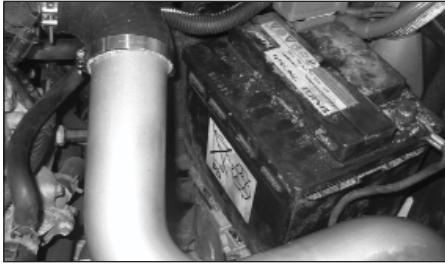
19. Fit the drycharger on to the filtercharger as shown. **NOTE:** The Drycharger's water repellent properties will last up to two years. See the parts list to order Drycharger if necessary.



20. Fit the filter on to the intake pipe using the #44 hose clamp supplied. Align the complete intake tube assembly for maximum clearance. Now firmly tighten all hose clamps and hardware.



21. Fit the supplied straight silicone hose from the IRV to the vent on the new intake tube.



22. Re-install the battery to the vehicle and reconnect the battery terminals (positive terminal first).



23. Re-install the ECU mounting bracket using its original hardware.



24. Re-install the wheel arch liner using its original hardware. Now re-install wheel to the vehicle. Re-install the front wheel and torque it up to factory specifications!



25. Re-install the engine cover to the vehicle.

26. Double check to make sure everything is tight and properly positioned before starting the vehicle.

27. It will be necessary for all Typhoons to be checked periodically for realignment, clearance and tightening of all connections. Failure to follow the above instructions or proper maintenance may void warranty.

ROAD TESTING:

1. Start the engine with the transmission in neutral or park, and the parking brake engaged. Listen for air leaks or odd noises. For air leaks secure hoses and connections. For odd noises, find cause and repair before proceeding. This kit will function identically to the factory system except for being louder and much more responsive.

2. Test drive the vehicle. Listen for odd noises or rattles and fix as necessary.

3. If road test is fine, you can now enjoy the added power and performance from your kit.

4. K&N suggests checking the Filtercharger element periodically for excessive dirt build-up. When the element becomes covered in dirt (or once a year), service it according to the instructions on the Recharger service kit (99-5000 or 99-5050) available from your K&N dealer.

