

Warning: Please follow these installation instructions carefully. The K&N Drycharger included in this kit must be installed on the K&N air filter when used with a K&N Typhoon Cold Air Intake System. The K&N Typhoon Intake System is a performance product that can be used safely during mild weather conditions. During hard and inclement weather conditions, you must convert your Cold Air Intake System into a short ram configuration, or return your vehicle to the stock OEM airbox and intake tract configuration. Failure to follow these instructions can void your warranty.

INSTALLATION INSTRUCTIONS

69-9750

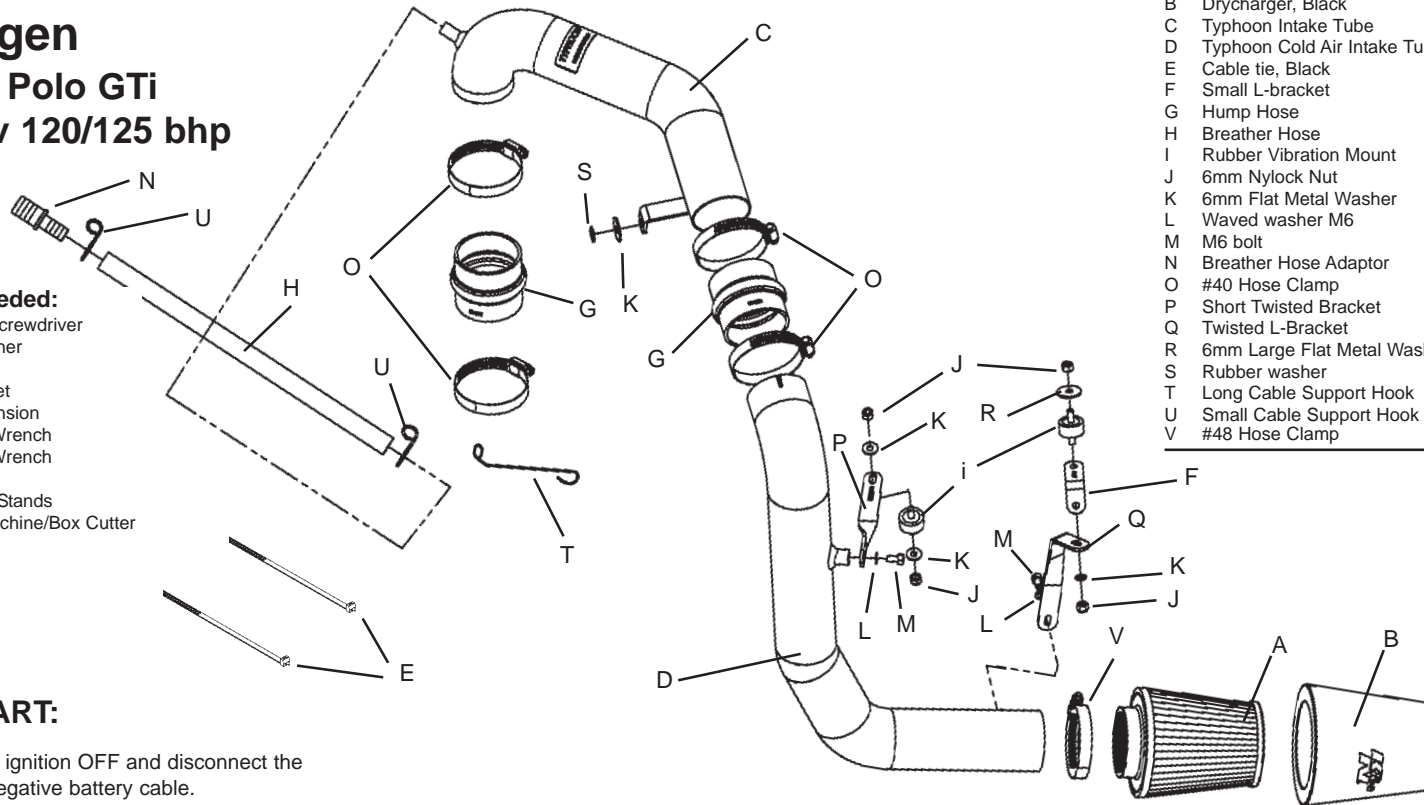
Volkswagen

1999-2003, Polo GTi

1.6L L4 16v 120/125 bhp

Tools Needed:

- Flat Blade Screwdriver
- 10mm Spanner
- Ratchet
- 10mm Socket
- Socket Extension
- 4mm Allen Wrench
- 5mm Allen Wrench
- Lifting Jack
- Pair of Axle Stands
- Abrasive Machine/Box Cutter



PARTS LIST

Description	Qty.	P/N
A Filtercharger	1	RC-9630
B Drycharger, Black	1	RC-9350DK
C Typhoon Intake Tube	1	27309
D Typhoon Cold Air Intake Tube	1	27310
E Cable tie, Black	2	21590
F Small L-bracket	1	07078
G Hump Hose	2	084018
H Breather Hose	1	08402
I Rubber Vibration Mount	2	07027
J 6mm Nylock Nut	4	07512
K 6mm Flat Metal Washer	4	08269
L Waved washer M6	2	08277
M M6 bolt	2	07727
N Breather Hose Adaptor	1	A2128-23
O #40 Hose Clamp	4	08554
P Short Twisted Bracket	1	070772
Q Twisted L-Bracket	1	06465
R 6mm Large Flat Metal Washer	1	08160
S Rubber washer	1	21685
T Long Cable Support Hook	1	21903
U Small Cable Support Hook	2	21901
V #48 Hose Clamp	1	08601

TO START:

1. Turn the ignition OFF and disconnect the vehicle's negative battery cable.



2. Remove the four Allen head bolts and carefully remove the plastic engine cover.



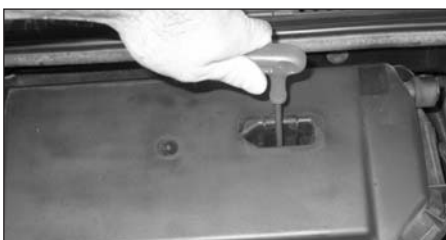
3. Carefully remove the rubber breather hose from the side of the air box.



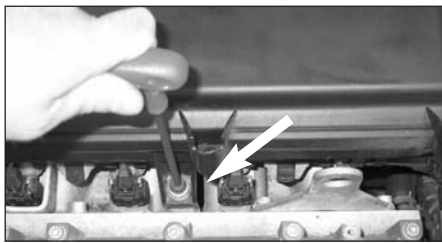
4. Unclip and remove the pick up pipe from the air box intake tube.



5. Unbolt and remove the pick up pipe.



6. Remove the plastic cover from the air box lid and unbolt the Allen head bolt beneath.



7. Remove the Allen head bolt on the front air box mounting.



8. Carefully remove the air box assembly from the vehicle.



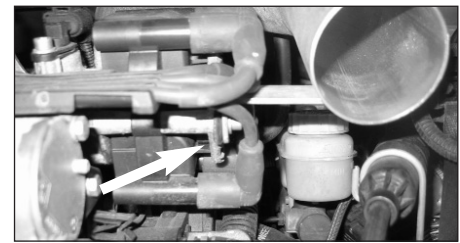
9. Fit the silicone hose on to the tube using the hose clamp supplied. **NOTE:** Before installing clean the inside of out with water and a towel!



10. Fit the longer hook around the clutch cable and secure it to the engine using the original bolt.



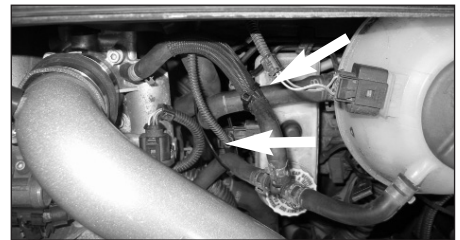
11. Remove the front bolt from the ignition amplifier.



12. Secure the bracket to the ignition amplifier using the original bolt. Ensure a washer and a rubber washer is fitted between the bracket and the amplifier.



13. Fit the short ram intake tube on to the throttle body and secure the hose clamp.



14. Fit the coolant reservoir hose to the two coolant hoses using the two cable ties supplied. Make sure that there is enough clearance between the intake tube and the coolant hoses..



15. Fit the breather hose extension to the original breather hose using the stepped adaptor.

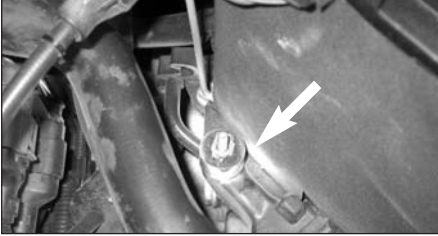


16. Fit the two small hooks under the bulkhead edge trim.

Continued on reverse side!



17. Feed the breather hose through the hooks onto the intake tube.



18. Fit the rubber vibration mount to the battery tray using the M6 nylock nut & washer supplied.



19. Fit the twisted mounting bracket to the vibration mount using the M6 nylock nut & washer supplied. Do not fully tighten at this point.

20. Taking all the necessary safety precautions as per manufacturers instructions raise the front of the vehicle.



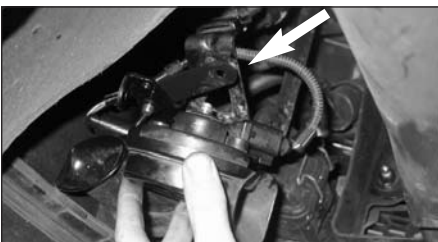
21. From underneath the car, carefully remove the air scoop from the vehicle as shown.



22. Using an abrasive machine or box cutter, extend the hole in the left side of the under tray as shown.



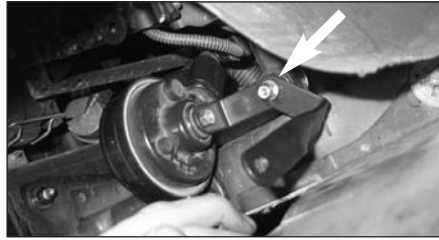
23. From underneath the car, fit the rubber vibration mount to the chassis using the large M6 washer & nylock nut supplied.



24. If the vehicle is fitted with dual horns, remove the lower horn and its mounting bracket by removing the M6 nut on top as shown. For vehicles without dual horns: proceed with instruction #27.



25. Fit the short "L" bracket to horn using the original nut as shown.



26. On dual horns equipped vehicles, first fit the horn mounting bracket and then the twisted "L" bracket to the rubber vibration stud using an M6 nylock nut and washer as shown, otherwise only fit the twisted "L" bracket. Don't fully tighten yet!



27. Fit the hump hose to the intake tube using the hose clamps supplied.



28. Feed the cold air intake tube down into the inner wing. **NOTE:** Before installing clean the inside of out with water and a towel!



29. Insert the cold air intake tube into the hump hose. Do not fully tighten the hose clamp at this moment.



30. Secure the twisted bracket from instruction #20 to the intake tube using an M6 bolt and wave washer supplied. Do not fully tighten at this moment.



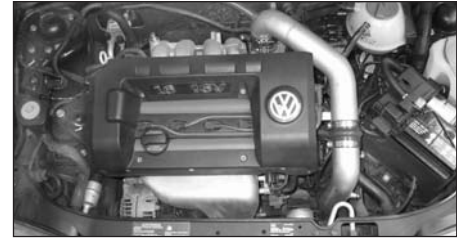
31. Secure the twisted "L" bracket from instruction #27 to the intake tube using an M6 bolt and wave washer supplied. Do not fully tighten at this moment.

32. Align the cold air intake tube to ensure sufficient clearance between the lower airco pipe, radiator hoses and electrical connectors. Now fully thighten all hose clamps and brackets.



33. Fit the drycharger over the filter and fit the filter to the cold air intake tube using the #40 hose clamp supplied.

NOTE: The Drycharger's water repellent properties will last up to two years. See the parts list to re-order Drycharger if necessary.

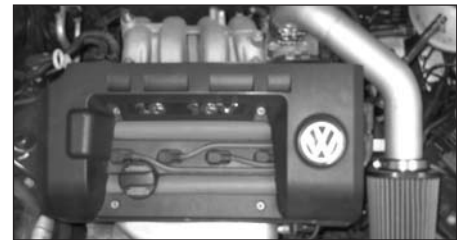


34. To finish the kit off, it is possible to cut a small section out of the engine cover and place it back as shown on.



35. Double check to make sure everything is tight and properly positioned and reconnect the vehicles negative battery cable before starting the vehicle.

36. It will be necessary for all Typhoons to be checked periodically for realignment, clearance and tightening of all connections. Failure to follow the above instructions or proper maintenance may void warranty.



37. This K&N Typhoon intake kit has been designed to be used in two different configurations. In the case of inclement weather, the cold air tube can be removed and the filter can be clamped onto the first intake tube located in the engine compartment to avoid the possibility of ingesting water into the engine.

ROAD TESTING:

1. Start the engine with the transmission in neutral or park, and the parking brake engaged. Listen for air leaks or odd noises. For air leaks secure hoses and connections. For odd noises, find cause and repair before proceeding. This kit will function identically to the factory system except for being louder and much more responsive.

2. Test drive the vehicle. Listen for odd noises or rattles and fix as necessary.

3. If road test is fine, you can now enjoy the added power and performance from your kit.

4. K&N suggests checking the Filtercharger element periodically for excessive dirt build-up. When the element becomes covered in dirt (or once a year), service it according to the instructions on the Recharger service kit available from your K&N dealer. 99-5003EU