

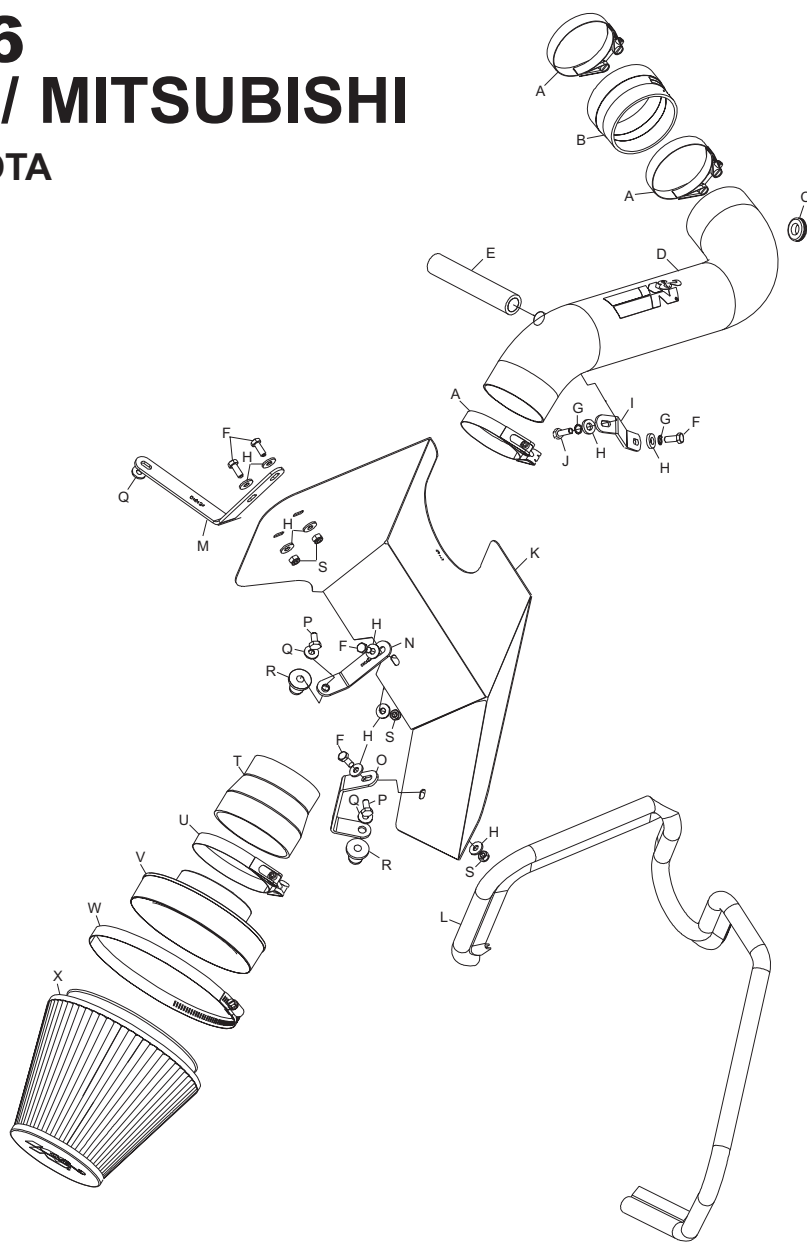
INSTALLATION INSTRUCTIONS

**77-1546
DODGE / MITSUBISHI**

**2005-06 DAKOTA
2006 RAIDER
V8-4.7L**

TOOLS NEEDED:

- Flat Blade Screwdriver
- Ratchet
- Extension
- 10mm Socket
- 1/2"mm Socket
- 10mm Allen Wrench
- 10mm Wrench



PARTS LIST:

Desc.	Qty.	Part #
A hose clamp #48	3	08601
B hose; 3" id -3-1/8" id x 2" l, tprd;	1	084031
C grommet; 1" od, 1/2" id, 1/4" thk	1	08167
D intake tube	1	27427
E hose; 1/2" id x 9" l, silicone	1	08401
F bolt; m6-1.00 x 16mm hex hd.	5	07703
G washer; 1/4" lock zn	2	08198
H washer; 1/4" id x 5/8" od	10	08275
I bracket "z"	1	010121
J bolt; m6 x 1.00" x 20mm hex, ss	1	07795
K heat shield	1	07663
L edge trim 55"	1	102480
M bracket; large "L"	1	010124
N bracket; small "L"	1	010122
O bracket; "C"	1	010123
P bolt; 5/16" - 18 x 1" l, ss	2	07777
Q washer; 5/16" id x 5/8" od, flat	3	08276
R insert; 5/16-18 x .600 od x .730 l rubber	2	088002
S nut; 6mm nylock, hexhead	4	07553
T hose; 3" to 3-1/2" x 3" l tprd	1	084055
U hose clamp #56	1	08620
V adapter #380	1	21512
W hose clamp #104	1	08697
X air filter	1	RF-1048

NOTE: FAILURE TO FOLLOW INSTALLATION INSTRUCTIONS AND NOT USING THE PROVIDED HARDWARE MAY DAMAGE THE INTAKE TUBE, THROTTLE BODY AND ENGINE.

TO START:

1. Turn the ignition OFF and disconnect the vehicle's negative battery cable.



2. Loosen the hose clamp at the throttle body and the air box mounting nut and then disconnect the crank case vent hose from the inline fitting.



3. Disconnect the stock intake tube from the intake plenum and lift to remove the air box assembly from the vehicle as shown.
NOTE: K&N recommends that customers do not discard factory air intake.



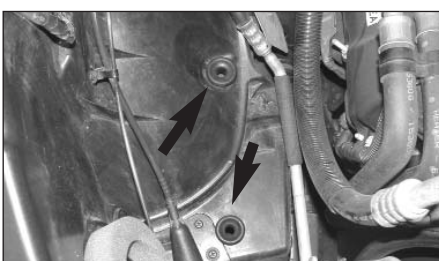
4. Depress the locking tab on the air temperature sensor electrical connection and then pull to disconnect the sensor electrical connection.



5. Loosen and remove the two intake plenum mounting bolts indicated.



6. Lift and remove the intake plenum from the vehicle as shown.



7. Pull the two air box mounting grommets shown from the inner fender.



8. Install the provided edge trim onto the heat shield as shown.
NOTE: Some trimming of the edge trim may be necessary.



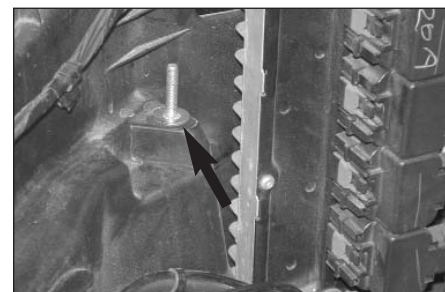
9. Install the "L" bracket (010124) onto the heat shield with the provided hardware as shown.



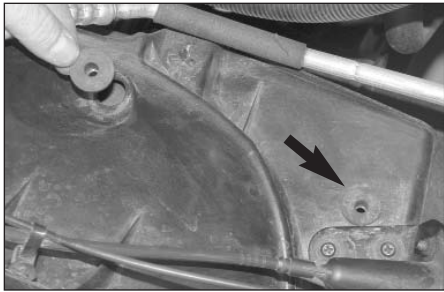
10. Install the "L" bracket (010122) onto the heat shield with the provided hardware as shown.



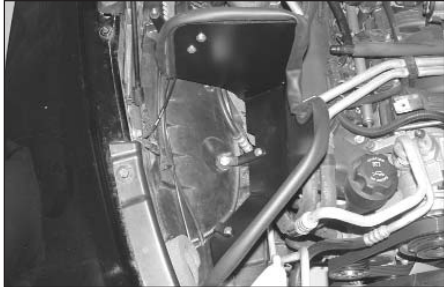
11. Install the "C" bracket (010123) onto the heat shield with the provided hardware as shown.



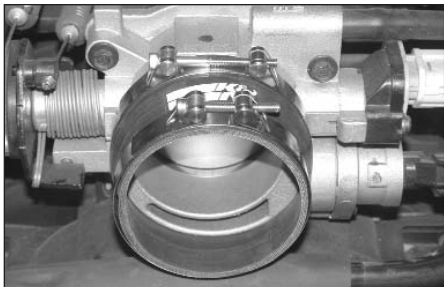
12. Install the provided 5/16" washer onto the air box mounting stud as shown.



13. Install the two threaded inserts into the air box mounting grommet locations as shown.



14. Install the heat shield assembly and secure with the provided hardware and the factory air box mounting nut.



15. Install the provided silicone hose (084031) onto the throttle body and secure with the provided hose clamp as shown.



16. Twist the air temperature sensor counter clockwise and remove it from the stock intake plenum.
NOTE: Take care, as the air temperature sensor is very fragile.



17. Install the provided grommet into the K&N intake tube as shown.



18. Remove the O-ring from the air temp. sensor as shown.



19. Install the sensor into the grommet installed in step #17.
NOTE: Take care installing the air temperature sensor, as it is very fragile.



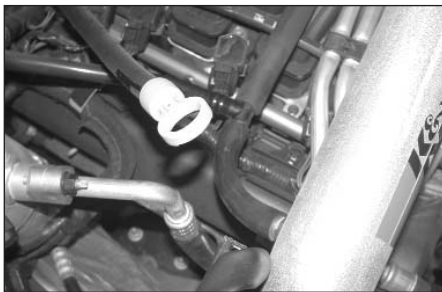
20. Install the tube mounting bracket (010121) onto the K&N intake tube as shown using the provided hardware.



21. Install the K&N intake tube into the silicone hose at the throttle body and position so that the mounting bracket aligns with the plenum mounting location. Then secure with the provided hardware.



22. Reconnect the air temperature sensor electrical connection as shown.



23. Install the provided crank case vent hose onto the factory crank case vent fitting and then onto the K&N intake tube as shown.

NOTE: Some trimming of the vent hose may be required.



24. Install the air filter adapter into the air filter as shown and secure with the provided hose clamp.



25. Install the silicone hose (084055) onto air filter adapter as shown and secure with the provided hose clamp as shown.



26. Install the air filter assembly onto the K&N intake tube and secure with the provided hose clamp as shown.



27. Reconnect the negative battery cable and double check to make sure everything is tightened and properly positioned before starting the vehicle.

28. The C.A.R.B. exemption sticker, (attached), must be visible under the hood so that an emissions inspector can see it when the vehicle is required to be tested for emissions. California requires testing every two years, other states may vary.

29. It will be necessary for all intakes to be checked periodically for realignment, clearance and tightening of all connections. Failure to follow the above instructions or proper maintenance may void warranty.

ROAD TESTING:

1. Start the engine with the transmission in neutral or park, and the parking brake engaged. Listen for air leaks or odd noises. For air leaks secure hoses and connections. For odd noises, find cause and repair before proceeding. This kit will function identically to the factory system except for being louder and much more responsive.

2. Test drive the vehicle. Listen for odd noises or rattles and fix as necessary.

3. If road test is fine, you can now enjoy the added power and performance from your kit.

4. K&N suggests checking the air filter element periodically for excessive dirt build-up. When the element becomes covered in dirt (or once a year), service it according to the instructions on the Recharger service kit, part number 99-5050 or 99-5000.