

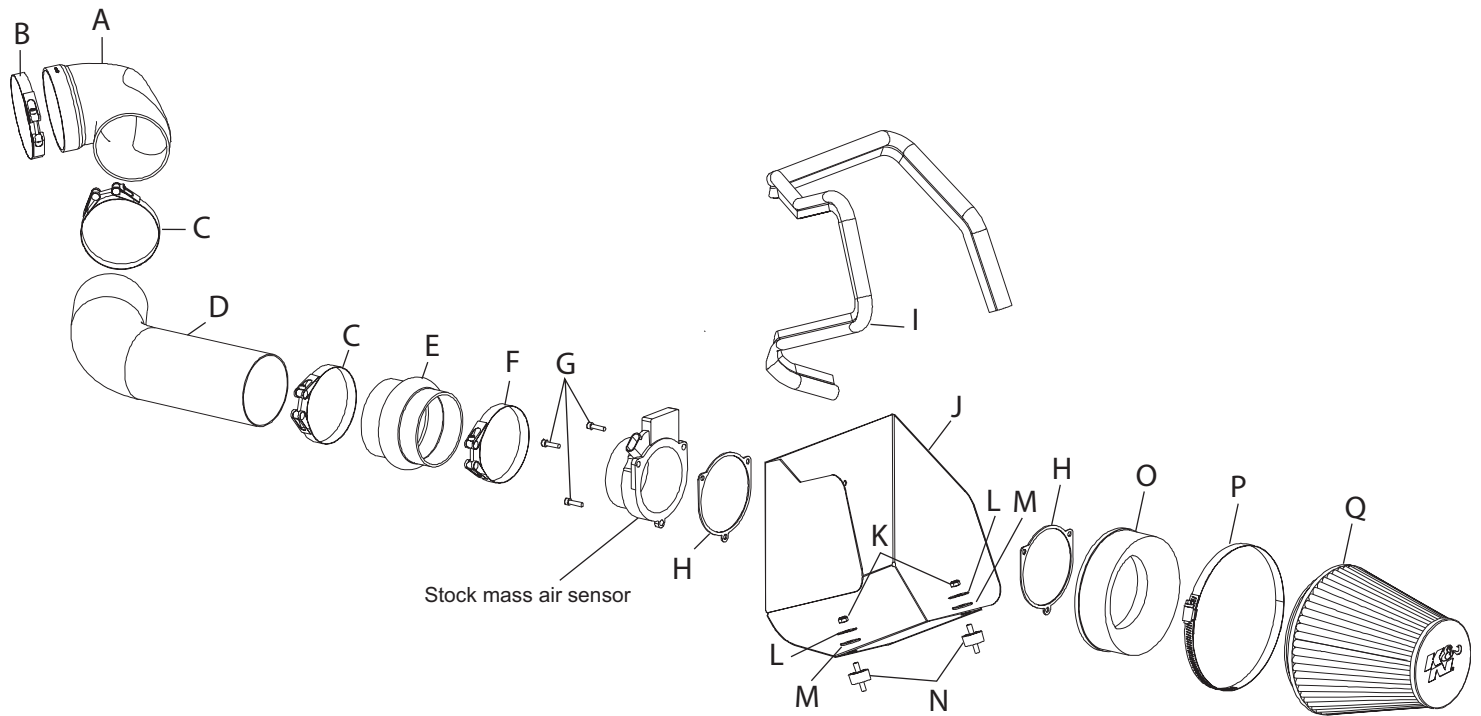
INSTALLATION INSTRUCTIONS

77-3021

Chevrolet/GMC
1999-04 Silverado/Sierra
V8-4.8L, 5.3L

TOOLS NEEDED:

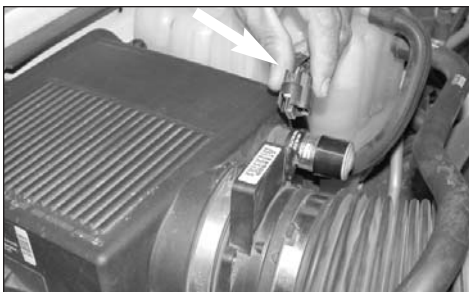
- Tools
- Flat blade screwdriver
- Ratchet
- 10mm socket
- 4mm allen wrench



NOTE: FAILURE TO FOLLOW INSTALLATION INSTRUCTIONS AND NOT USING THE PROVIDED HARDWARE MAY DAMAGE THE INTAKE TUBE, THROTTLE BODY AND ENGINE.

TO START:

1. Turn the ignition OFF and disconnect the vehicle's negative battery cable.



2. Disconnect the mass air sensor electrical connection as shown.



3. Loosen the hose clamps at the throttle body and at the mass air sensor.



4. Unclip the radiator hose from the intake tube as shown.



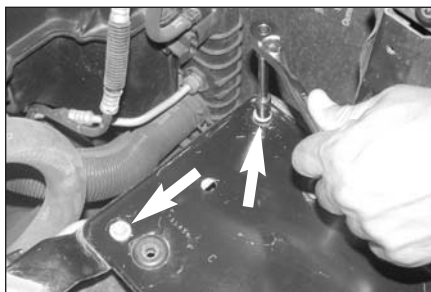
5. Disconnect the stock intake tube from the mass air sensor and from the throttle body, then, remove the intake tube as shown.



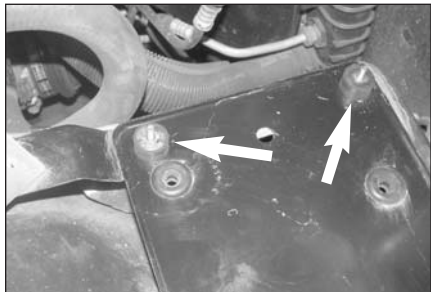
6. Pull firmly upwards to remove the air cleaner assembly as shown.



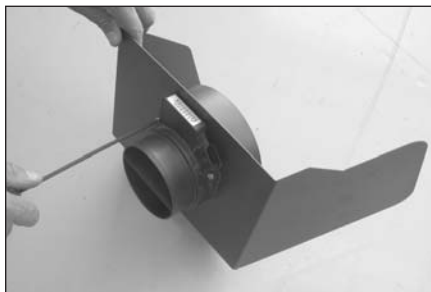
7. Loosen the hose clamp on the air cleaner then remove the mass air sensor as shown.



8. Remove the two stock air cleaner support tray bolts as shown.



9. Install the rubber mounted studs as shown and tighten firmly.



10. Using the provided hardware assemble the mass air adapter, heat shield, gaskets, and the stock mass air sensor as shown.

Parts List

Description	Qty.	P/N
A Angled Silicone Hose	1	084053
B Hose Clamp, #64	1	08645
C Hose Clamp, #56	2	08620
D Performance Intake Tube	1	27141P
E Silicone Hump Hose	1	084056
F Hose Clamp, #56	1	08620
G Bolt, M5-.80, 20mm L. C/H/A	3	08320
H Gasket, 1/16" Neoprene	2	09033
I Edge Trim, 48" L.	1	102485
J Heat Shield	1	07310
K Nut, 6mm Nylock	2	07512
L Washer, Fender	2	08160
M Washer, Rubber	2	21685
N Rubber Mounted Stud, 6mm	2	07027
O Adapter, Mass Air	1	08783
P Hose, Clamp, #104	1	08697
Q Air Filter	1	RC-5046



11. Install the edge trim onto the heat shield as shown.



12. Install the heat shield onto the rubber mounted studs as shown.



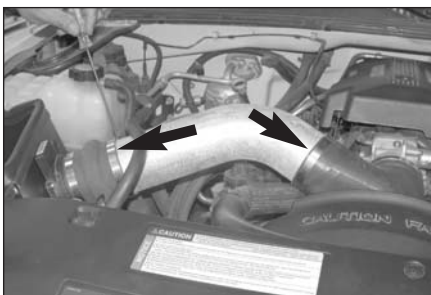
13. Secure the heat shield to the rubber mounted studs using the provided hardware but do not tighten at this time.



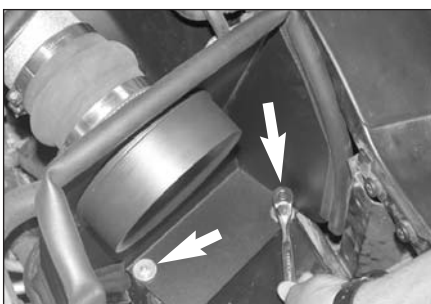
14. Install the silicone angled hose and hose clamps onto the throttle body but do not tighten at this time.



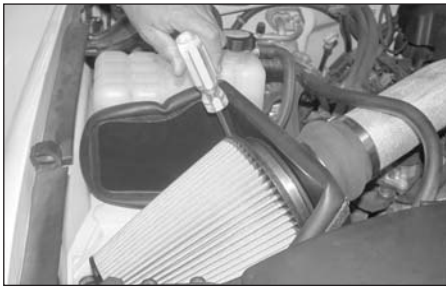
15. Install the silicone step hump hose and hose clamps onto the mass air sensor and tighten as shown.



16. Install the K&N Intake tube into the angled hose, then, slide the other end into the hump hose. Adjust everything for best fit and clearance then tighten the hose clamps as shown.



17. Tighten the hardware on the heat shield as shown.



18. Install the K&N air filter onto the mass air adapter and secure with the provided hose clamp as shown.



19. Reconnect the mass air sensor electrical connection as shown.



20. Reconnect the negative battery cable and double check to make sure everything is tightened and properly positioned before starting the vehicle.

21. It will be necessary for all Performance Intake Kits to be checked periodically for realignment, clearance and tightening of all connections. Failure to follow the above instructions or proper maintenance may void warranty.

ROAD TESTING:

1. Start the engine with the transmission in neutral or park, and the parking brake engaged. Listen for air leaks or odd noises. For air leaks secure hoses and connections. For odd noises, find cause and repair before proceeding. This kit will function identically to the factory system except for being louder and much more responsive.

2. Test drive the vehicle. Listen for odd noises or rattles and fix as necessary.

3. If road test is fine, you can now enjoy the added power and performance from your kit.

4. K&N suggests checking the air filter element periodically for excessive dirt build-up. When the element becomes covered in dirt (or once a year), service it according to the instructions on the Recharger service kit, part number 99-5000 or 99-5050.