

# INSTALLATION INSTRUCTIONS

## 77-3031

### Chevrolet/GMC

2007 Silverado 2500HD Classic, 3500 Classic

2007 Sierra 2500HD Classic, 3500 Classic

2001-06 Silverado 2500HD, 3500

2001-06 Sierra 2500HD, 3500

V8-6.0L

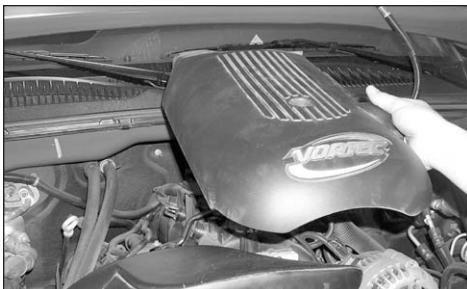
NOTE: EO# D-269-29 APPLIES TO 2001-04

#### TOOLS NEEDED:

Flat Blade Screwdriver  
Phillips Screwdriver  
Pliers  
3mm Allen Wrench  
4mm Allen Wrench  
10mm wrench  
Ratchet  
Extension  
10mm Socket

#### TO START:

1. Turn the ignition OFF and disconnect the vehicle's negative battery cable.



2. Remove the bolt that secures the engine cover, then, remove the engine cover as shown.



3. Disconnect the mass air sensor electrical connection as shown.



4. Unclip the radiator hose from the stock intake tube as shown.

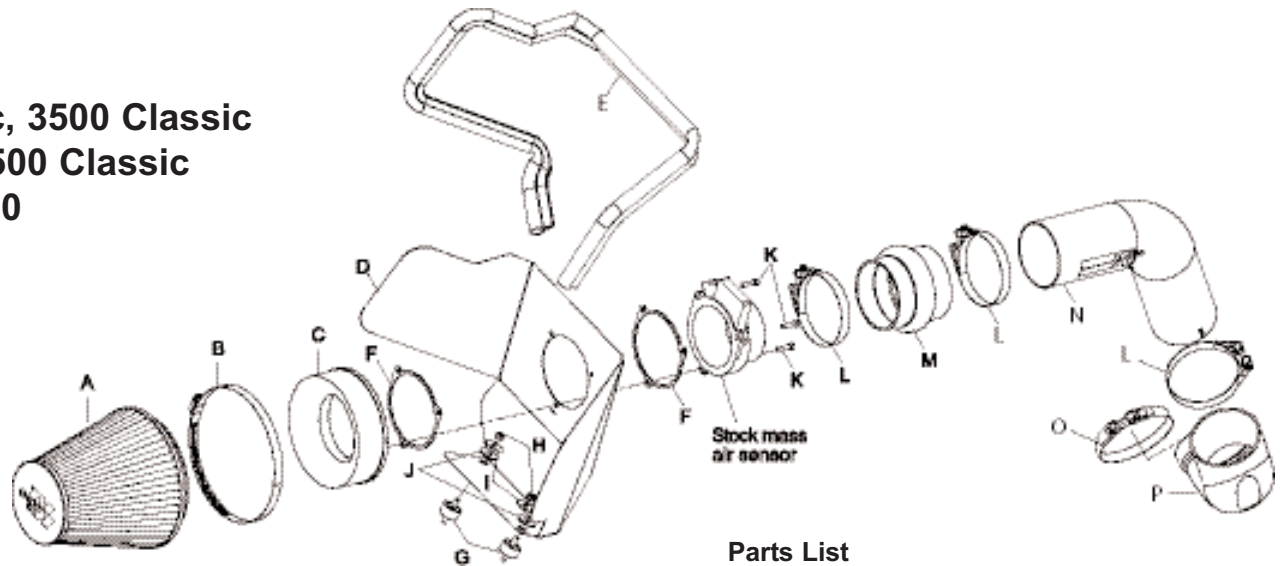


5. Loosen the hose clamps at the throttle body and at the mass air sensor, then remove the stock intake tube as shown.



6. Pull firmly upwards to remove the air cleaner assembly as shown.

NOTE: K&N recommends that you do not discard your factory air intake.

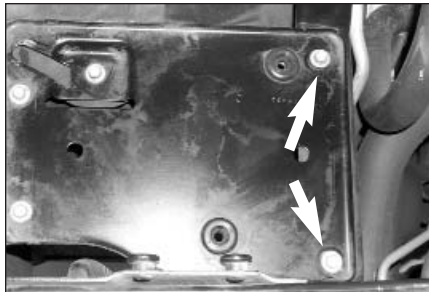


#### Parts List

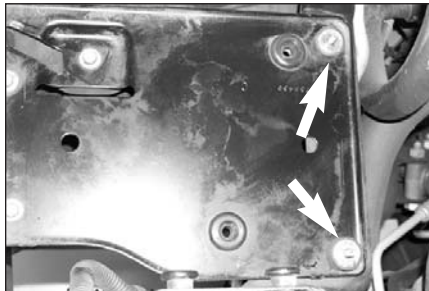
Description	Qty.	P/N
A Air filter	1	RC-5046
B Hose Clamp, #104	1	08697
C Mass Air Adapter	1	08783
D Heat Shield	1	07316
E Edge Trim, 3/4" Bulb, 48" L,	1	102485
F Gasket	2	09033
G 6mm Rubber Mounted Stud	2	07027
H 6mm Nylock Nut, SS	2	07512
I Fender Washer	2	08160
J Rubber Washer	2	21685
K 5mm Allen Bolt, 20mm L	3	08320
L Hose Clamp, #56	3	08620
M Silicone Hump Hose	1	084056
N Performance Intake Tube	1	27353
O Hose Clamp, #64	1	08645
P Silicone Angled Hose	1	084053



7. Loosen the hose clamp on the air cleaner then remove the mass air sensor as shown.



8. Remove the two stock air cleaner support tray bolts as shown.



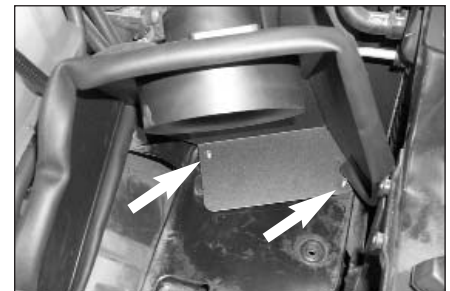
9. Install the rubber mounted studs as shown and tighten firmly by hand.



10. Install the edge trim onto the heat shield as shown.



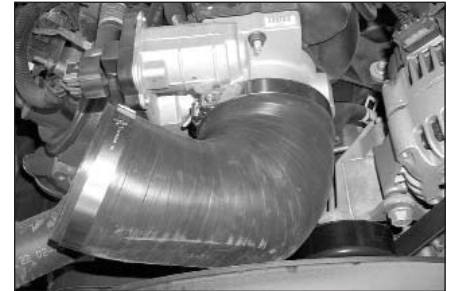
11. Using the provided hardware assemble the mass air adapter, heat shield, gaskets and the stock mass air sensor as shown.



12. Install the heat shield onto the rubber mounted studs as shown.



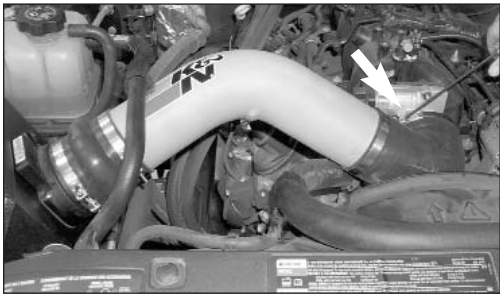
13. Secure the heat shield to the rubber mounted studs using the provided hardware but do not tighten at this time.



14. Install the silicone angled hose and hose clamps onto the throttle body but do not tighten at this time.



15. Install the silicone step hump hose and hose clamps onto K&N Performance Intake Tube as shown.



16. Install the K&N intake tube into the angled hose, then, slide the other end into the hump hose. Adjust everything for best fit and clearance and tighten all hose clamps as shown.



17. Tighten the hardware on the heat shield as shown.



18. Install the K&N Air filter onto the mass air adapter and secure it with the provided hose clamp as shown.



19. Reconnect the mass air sensor electrical connection as shown.



20. Reinstall the engine cover and secure it with the stock hex bolt.



21. Reconnect the negative battery cable and double check to make sure everything is tightened and properly positioned before starting the vehicle.

22. The C.A.R.B. exemption sticker, (attached), must be visible under the hood so that an emissions inspector can see it when the vehicle is required to be tested for emissions. California requires testing every two years, other states may vary.

23. It will be necessary for all Performance Intake Kits to be checked periodically for realignment, clearance and tightening of all connections. Failure to follow the above instructions or proper maintenance may void warranty.

#### ROAD TESTING:

1. Start the engine with the transmission in neutral or park, and the parking brake engaged. Listen for air leaks or odd noises. For air leaks secure hoses and connections. For odd noises, find cause and repair before proceeding. This kit will function identically to the factory system except for being louder and much more responsive.
2. Test drive the vehicle. Listen for odd noises or rattles and fix as necessary.
3. If road test is fine, you can now enjoy the added power and performance from your kit.
4. K&N suggests checking the Air filter element periodically for excessive dirt build-up. When the element becomes covered in dirt (or once a year), service it according to the instructions on the Recharger service kit, part number 99-5000 or 99-5050.

**\*FREE K&N DECAL To register your warranty, please see us online at [knfilters.com/register](http://knfilters.com/register). FREE K&N DECAL\***