



**PERFORMANCE INTAKE KITS**



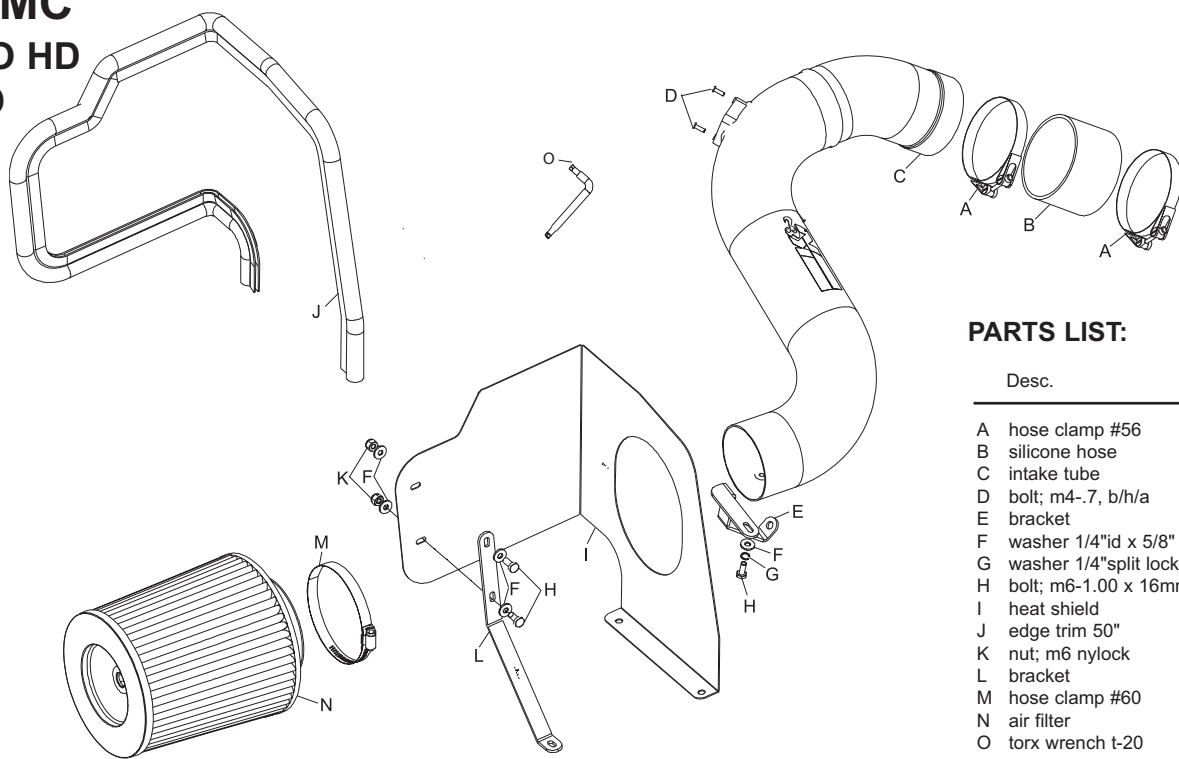
# INSTALLATION INSTRUCTIONS

## 77-3047 CHEVROLET/GMC 2004-05 SILVERADO HD 2004-05 SIERRA HD V8-6.6L Turbo Diesel (LLY)

NOTE: This kit was not designed to fit vehicles with a body lift.

### TOOLS NEEDED:

- Flat Blade Screwdriver
- Ratchet
- Extension
- 10mm Socket
- 14mm Socket
- 2.5mm Allen
- 9/64" allen
- 10mm Wrench



### PARTS LIST:

Desc.	Qty.	Part #
A hose clamp #56	2	08620
B silicone hose	1	08456
C intake tube	1	27414
D bolt; m4-.7, b/h/a	2	07726
E bracket	1	010080
F washer 1/4" id x 5/8" od, flat	5	08275
G washer 1/4" split lock	1	08198
H bolt; m6-1.00 x 16mm, hex head	3	07703
I heat shield	1	07457
J edge trim 50"	1	102481
K nut; m6 nylock	2	07553
L bracket	1	070025
M hose clamp #60	1	08624
N air filter	1	RC-5112
O torx wrench t-20	1	69801

**NOTE: FAILURE TO FOLLOW INSTALLATION INSTRUCTIONS AND NOT USING THE PROVIDED HARDWARE MAY DAMAGE THE INTAKE TUBE, THROTTLE BODY AND ENGINE.**

### TO START:

1. Turn the ignition OFF and disconnect the vehicle's negative battery cable.



2. Depress the locking tab on the mass air sensor electrical connector, and then disconnect the electrical connection.



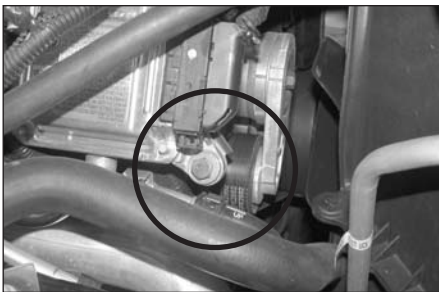
3. Loosen the hose clamp, which secures the intake tube to the intake manifold, and then disconnect the intake tube from the intake manifold.



4. Lift up on the air box assembly to release from the mounting grommets, and then remove the air box and intake tube assembly from the vehicle.



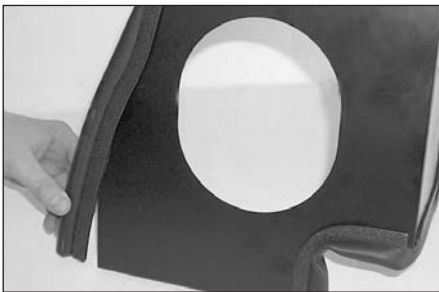
5. Install the silicone hose (08456) onto the intake manifold and secure with the provided hose clamps.



6. Remove the lower front engine processor mounting bolt shown.



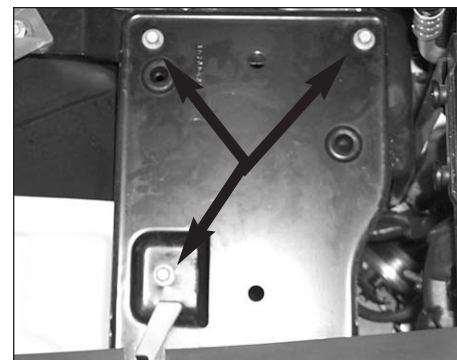
7. Using the factory bolt removed in step #6, install the tube mounting bracket to the engine processor as shown.



8. Apply the provided trim seal to the heat shield assembly as shown. Trim if necessary.



10. Install bracket onto heat shield as shown. Do not tighten completely.



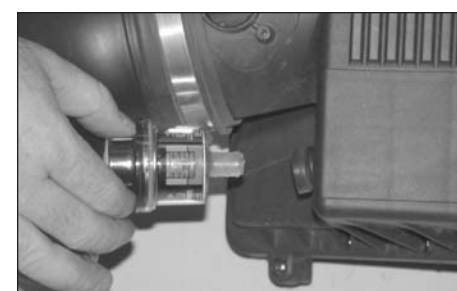
10. Remove the three bolts from the stock airbox mounting tray.



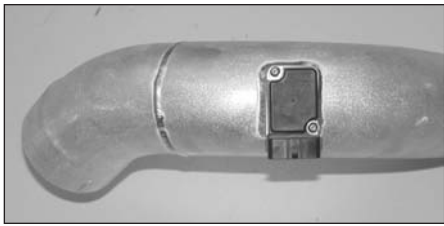
11. Mount the heat shield onto the airbox mounting tray and secure with the three bolts removed in step 10.



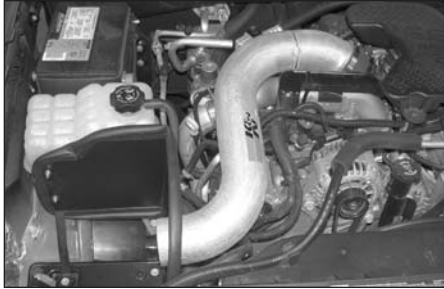
12. Using the "TORX" T20 wrench provided, loosen and remove the two-torx screw that retain the mass air sensor, and then remove the sensor.



13. Remove the restriction gauge and grommet from the stock air box as shown.



14. Install the mass air sensor into the K&N intake tube and secure with the provided hardware as shown.



15. Install the K&N intake tube into the silicone hose at the intake inlet, then align the tube to the mounting bracket installed in step #7 and secure with the provided hardware.



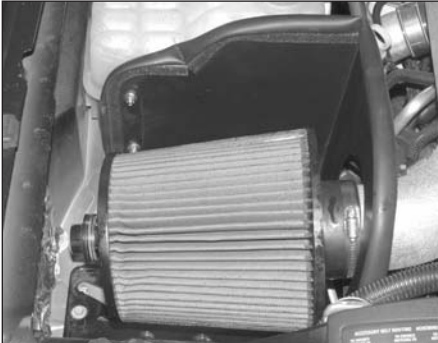
16. Adjust heat shield and bracket for necessary clearance, then tighten all hardware completely.



17. Install grommet onto filter as shown.



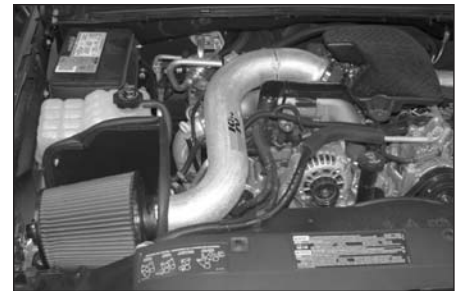
18. Install filter restriction gauge onto Air filter as shown.



19. Install the K&N Air filter onto intake tube as shown then tighten completely.



20. Reconnect the mass air sensor electrical connection as shown.



21. Reconnect the negative battery cable and double check to make sure everything is tightened and properly positioned before starting the vehicle.

22. The C.A.R.B. exemption sticker, (attached), must be visible under the hood so that an emissions inspector can see it when the vehicle is required to be tested for emissions. California requires testing every two years, other states may vary.

23. It will be necessary for all intakes to be checked periodically for realignment, clearance and tightening of all connections. Failure to follow the above instructions or proper maintenance may void warranty.

#### ROAD TESTING:

1. Start the engine with the transmission in neutral or park, and the parking brake engaged. Listen for air leaks or odd noises. For air leaks secure hoses and connections. For odd noises, find cause and repair before proceeding. This kit will function identically to the factory system except for being louder and much more responsive.

2. Test drive the vehicle. Listen for odd noises or rattles and fix as necessary.

3. If road test is fine, you can now enjoy the added power and performance from your kit.

4. K&N suggests checking the Air filter element periodically for excessive dirt build-up. When the element becomes covered in dirt (or once a year), service it according to the instructions on the Recharger service kit, part number 99-5050 or 99-5000.