

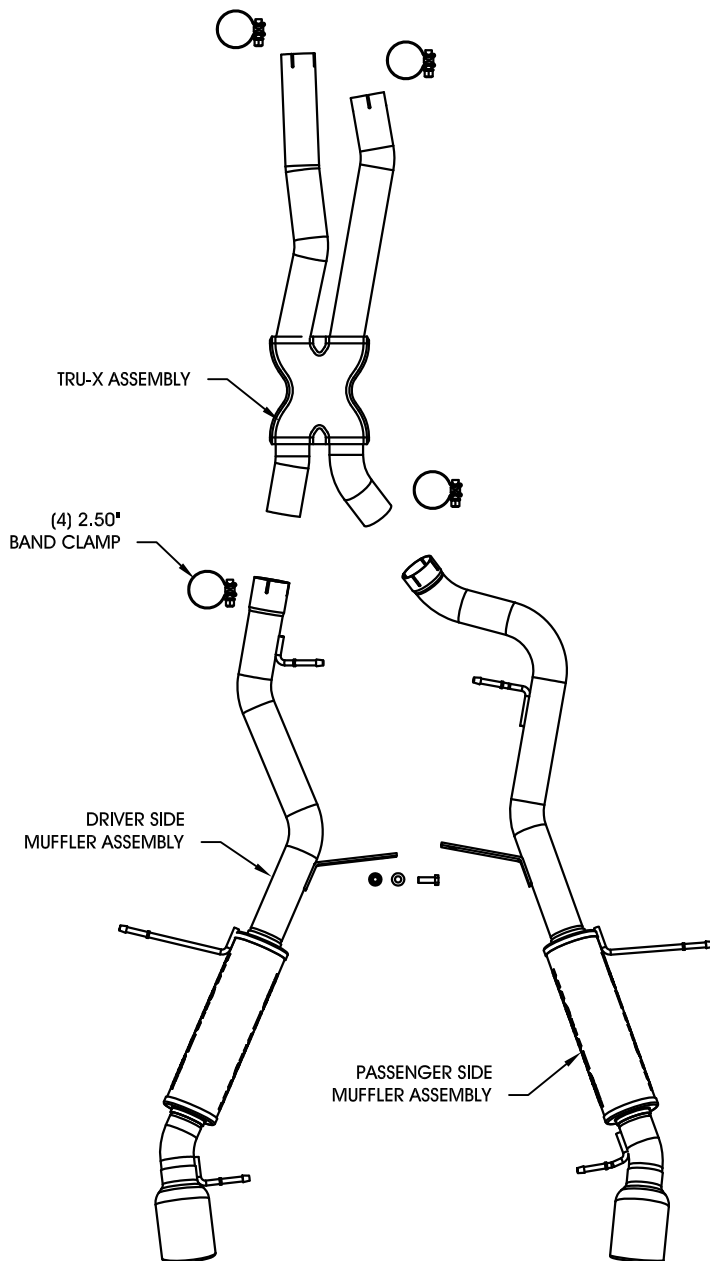
### SYS C/B 07-08 BMW 335i/ix 3.0L

**Warning:** When working on, under, or around any vehicle exercise caution. Please allow the vehicle's exhaust system to cool before removal, as exhaust system temperatures may cause severe burns. If working without a lift, always consult vehicle manual for correct lifting specifications. Always wear safety glasses and ensure a safe work area. Serious injury or death could occur if safety measures are not followed.

**Step 1:** (Carefully read all instructions before installation) To remove the OEM exhaust system, you will need to cut the pipe approx. 5" behind the driver side converter and approx. 3" behind the passenger side converter (See fig. 2). Remove the exhaust from the OEM rubber insulators. Do not discard or damage the OEM rubber insulators, as they will be re-used to mount the new exhaust system. Be sure to deburr the ends of the cut pipes before installing the new system.

**Step 2:** Install the new tru-x assembly at the cut pipe location using the supplied 2.50" band clamps. Leave all clamps and fasteners loose for final adjustment of the complete system. Install the muffler assemblies using the supplied 2.50" band clamps and by fitting the welded hangers into the OEM rubber insulators. Finally, connect the mounting brackets using the supplied fasteners.

**Step 3:** With all components mounted loosely, adjust the system for overall aesthetics and clearance of frame & bodywork. (MAGNAFLOW recommends at least 1/2" of clearance between the exhaust system and any body panels to prevent heat-related body damage or fire.)



# MAGNAFLOW.

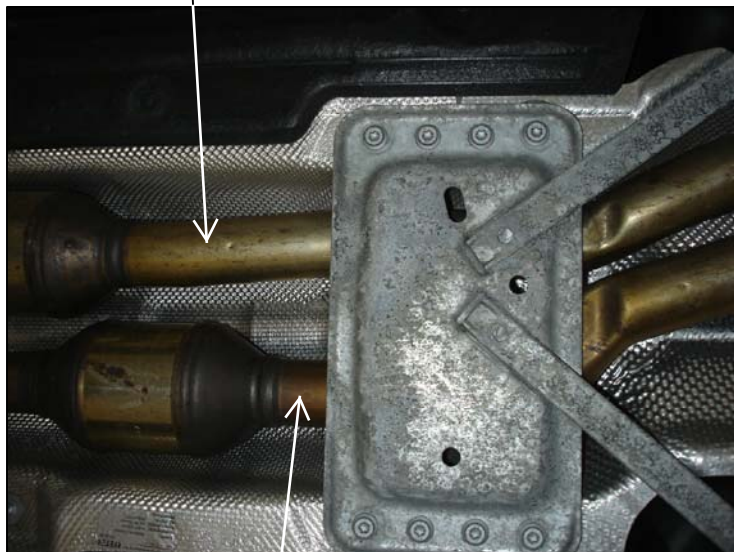
Mufflers, Converters,  
Systems and Tips

*Exhaust*  
PRODUCTS

## INSTALLATION INSTRUCTIONS FOR 16540

SYS C/B 07-08 BMW 335i/ix 3.0L

DRIVER SIDE  
CUT APPROX. 5"



PASSENGER SIDE  
CUT APPROX. 3"

FIG-2

**Warning:** When working on, under, or around any vehicle exercise caution. Please allow the vehicle's exhaust system to cool before removal, as exhaust system temperatures may cause severe burns. If working without a lift, always consult vehicle manual for correct lifting specifications. Always wear safety glasses and ensure a safe work area. Serious injury or death could occur if safety measures are not followed.

**Step 4:** Once a final position has been chosen for the new system, evenly tighten all fasteners from front to rear. The supplied band clamps must be VERY tight to properly align the pipes and prevent leaks (Approximately 65ft-lbs). Inspect all fasteners after 25-50 miles of operation and retighten if necessary.

PAGE 2 OF 2

\*MAGNAFLOW Performance Exhaust recommends professional installation on all their products

Technical support: 1-800-959-9226 ext. 4500

MAGNAFLOW Performance Exhaust - 22961 Arroyo Vista - Rancho Santa Margarita, CA 92688