

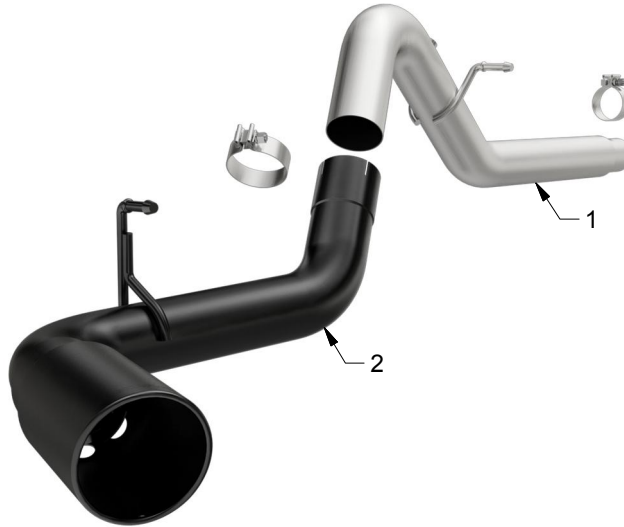


INSTALLATION INSTRUCTIONS



2016 CHEVROLET COLORADO 2.8L BLACK | PART NO. 19330

BILL OF MATERIALS:



- 1. INLET PIPE ASSY.
- 2. TAIL PIPE ASSY.



WEAR SAFETY GLASSES



READ INSTRUCTIONS THOROUGHLY BEFORE INSTALLING PRODUCT

SHOP SUPPLIES:



SPRAY LUBRICANT

To ease removal of existing exhaust components (especially on older vehicles) spray penetrating lubricant on all fasteners and hangers/insulators that will be loosened or removed and let soak before disassembly.

HARDWARE KIT:

- 1. [1] 2.75" Clamp
- 2. [1] 3.50" Clamp

MINIMUM REQUIRED TOOLS:



15mm



5/16"



Hanger Tool (Or Pry Bar)



Sawzall or other cutting tool

MAGNAFLOW RECOMMENDS PROFESSIONAL INSTALLATION ON ALL THEIR PRODUCTS



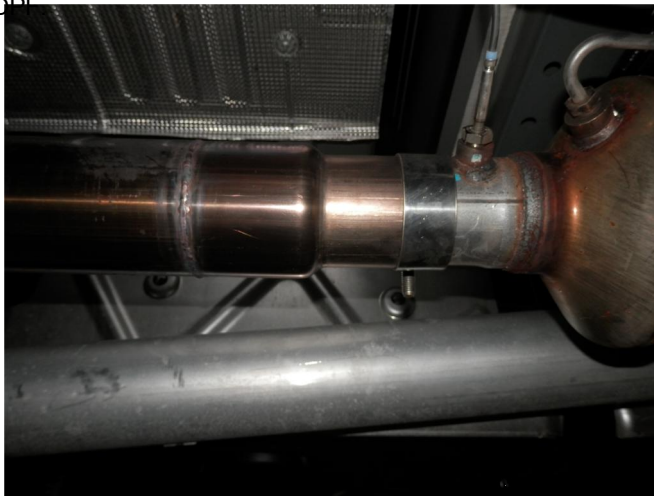
WARNING: When working on, under, or around any vehicle exercise caution. Please allow the vehicle's exhaust system to cool before removal, as exhaust system temperatures may cause severe burns. If working without a lift always consult vehicle manual for correct lifting specifications. Always wear safety glasses and ensure a safe work area. Serious injury or death could occur if safety measures are not followed.

ATTENTION: Always install any supplied band or U-bolt clamps to the proper torque specifications of 40-45 ft-lbs for band clamps and 30-35 ft-lbs for U-bolt clamps. Over tightening will result in the clamp breaking and will NOT be warranted by MagnaFlow.

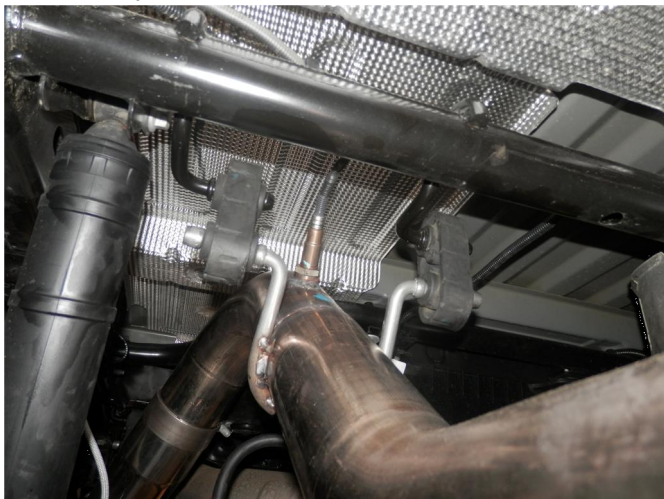
INSTALLATION INSTRUCTIONS



Step 1. Begin removal by removing the secondary O2 sensor at the over axle pipe of the OEM system. Next, cut the OEM inlet pipe 3.00" rearward of the O2 sensor behind the DPF.



Step 2. Begin installation of your new MAGNAFLOW system by loosely attaching the Inlet Pipe Assembly to the DPF outlet pipe you have just cut using the supplied 2.75" clamp. Engage the welded hangers to the rubber insulators. Reinstall the secondary O2 sensor.



Step 3. Loosely attach the Tail Pipe Assembly using a similar fashion. Keep all fasteners loose for final adjustment.



Step 4. Once a final position has been chosen for the new exhaust system, evenly tighten all clamps from front to rear using the torque specifications on page one of the instructions. Inspect all fasteners after 25-50 miles of operation and re-tighten if necessary.