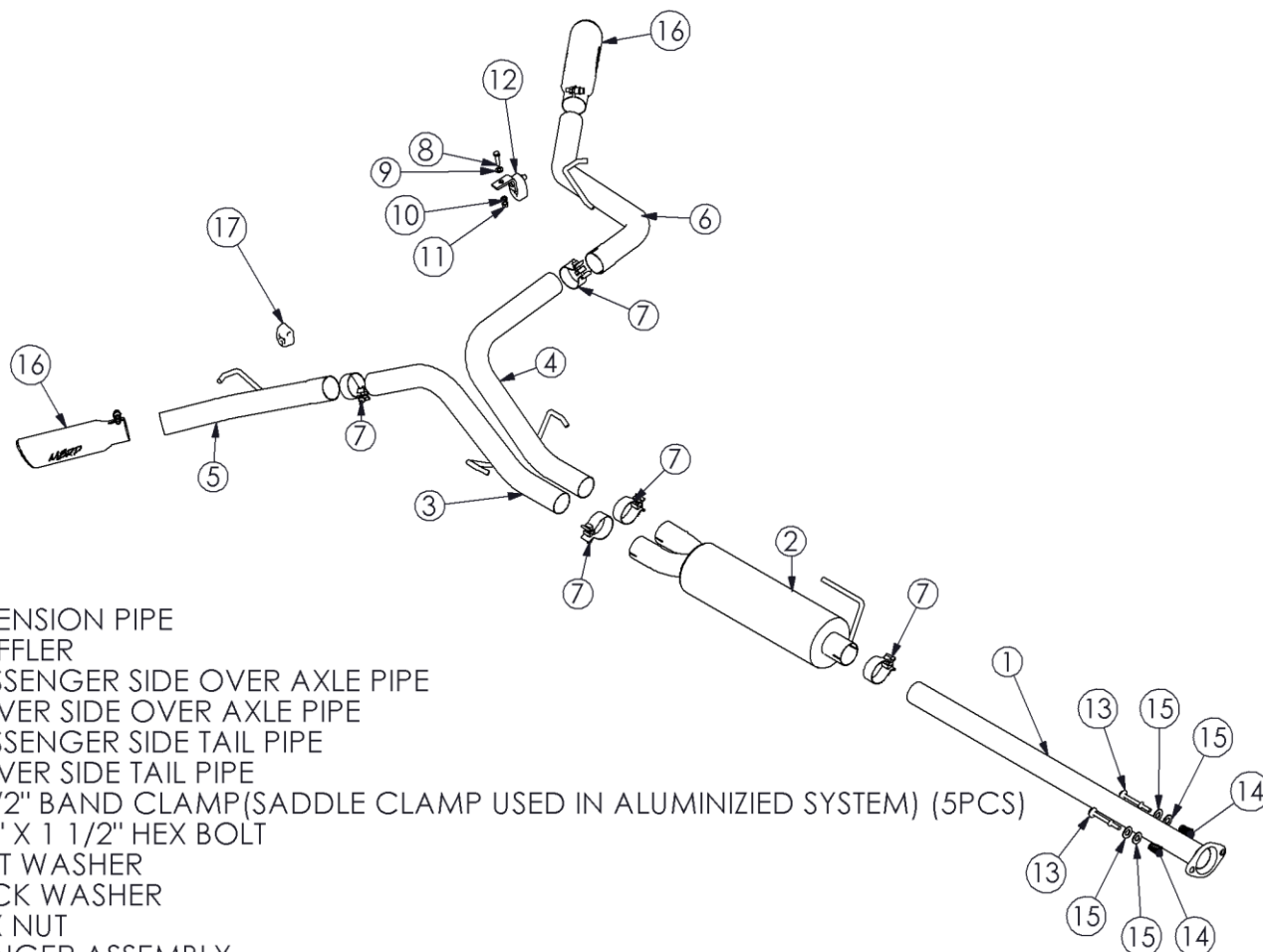


S5328

2005-2013 TOYOTA TACOMA 4.0L EC/CC,
CAT BACK DUAL SIDE SPLIT

MBRP
INC.
PERFORMANCE EXHAUST



1. EXTENSION PIPE
2. MUFFLER
3. PASSENGER SIDE OVER AXLE PIPE
4. DRIVER SIDE OVER AXLE PIPE
5. PASSENGER SIDE TAIL PIPE
6. DRIVER SIDE TAIL PIPE
7. 2 1/2" BAND CLAMP (SADDLE CLAMP USED IN ALUMINIZED SYSTEM) (5PCS)
8. 3/8" X 1 1/2" HEX BOLT
9. FLAT WASHER
10. LOCK WASHER
11. HEX NUT
12. HANGER ASSEMBLY
13. EXISTING BOLT (2PCS)
14. EXISTING SPRING (2PCS)
15. 5/8" FLATWASHER (4PCS)
16. EXHAUST TIP (2PCS)
17. 90° RUBBER INSULATOR

PLEASE READ BEFORE STARTING INSTALLATION

While MBRP Inc. has made every effort to ensure that all components of this system are of superior quality and properly packaged, it is the installer's responsibility to ensure the following before removal of the factory exhaust:

- that ALL components shown above are present.
- that ALL mating components fit together.
- that there are no damaged components.
- that the system you have purchased is appropriate for your vehicle year, model and configuration.
- that the system will not interfere with any modifications previously installed or planned.
- that you have read and understand these instructions.

If you have any questions or are uncertain about any aspect of the installation of this system to your vehicle please contact your dealer before commencing installation.

Removal of Stock System:

1. Apply a penetrating lubricant liberally to all exhaust fasteners, hangers and rubber insulators.

2. Remove the bolts and springs holding the front flange together and disconnect exhaust system. Do not discard this hardware as it is used for the installation. **Refer to Figure 1.**

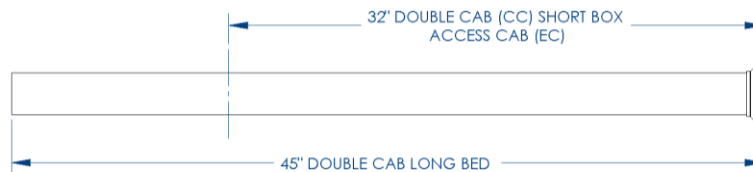
3. Remove the hangers from the rubber insulators and remove the exhaust from the vehicle. If a hoist or hydraulic lift is not being used the tail pipe may need to be cut to clear the rear axle. **Refer to Figure 2.**

Installation of MBRP Inc. Performance Exhaust:

1. Slide two of the **5/8" Flatwashers** over the bolts previously removed from the flange and then slide the springs over the bolts. Now loosely attach the **Extension Pipe** to the flange using the fasteners.

Refer to Figure 3.

Note: The **Extension Pipe** will need to be trimmed on some models. Refer to the illustration below.



2. Install the **Muffler** onto **Extension Pipe** using one of the **2 1/2" Clamps**. Then install the hanger into the factory rubber insulator. Do not tighten the clamp at this time.

Refer to Figure 4.



Figure 1

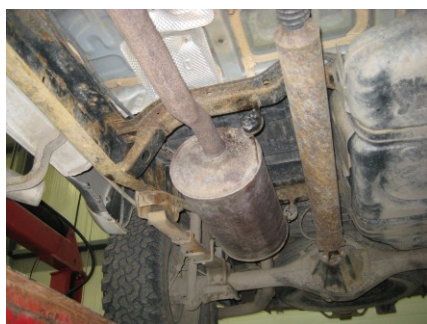


Figure 2



Figure 3



Figure 4



Figure 5

3. Loosely install the **Passenger Side Over Axle Pipe** connecting it to the **Muffler** passenger side outlet with a **2 ½" Clamp**. Install the hanger into the rubber insulator located above the **Over Axle Pipe**.
Refer to Figure 5.



Figure 6

4. Loosely install the **Driver Side Over Axle Pipe** connecting it to the **Muffler** driver side outlet with a **2 ½" Clamp**. Install the hanger into the rubber insulator located above the **Over Axle Pipe**.
Refer to Figure 6.

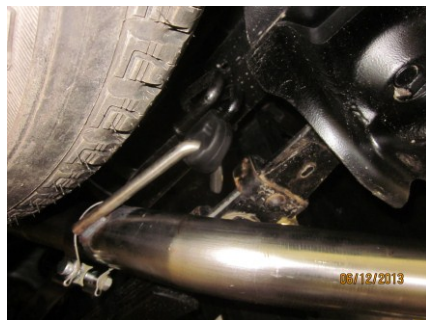


Figure 7

5. Connect the expanded end of the **Passenger Tail Pipe** to the **Over Axle Pipe** with the remaining the **2 ½" Clamp**. Install the hanger into the factory rubber insulator.

NOTE: 2013 models require the removal of the factory rubber insulator and the installation of the 90° Rubber Insulator to the outside frame mount.

Refer to Figure 7.



Figure 8

6. Connect the expanded end of the **Driver Side Tail Pipe** to the **Driver Side Over Axle Pipe**, keeping brake flex lines in front of the pipe.
Refer to Figure 8.



Figure 9

7. Move the **Driver Side Tail Pipe** into approximate position. Using the factory hole provided in the frame located directly above the tail pipe hanger, attach the hanger provided using the supplied hardware.

Refer to Figure 9.

Note: Lowering and slightly relocating the spare tire may be required for installation access as well as hanger clearance.



Figure 10

8. Install and adjust the **Exhaust Tips** to suit. Tighten the lock bolt located on each **Exhaust Tip**.

Refer to Figure 10.

9. Make sure that the exhaust is properly in place before tightening clamps. Start at the front of the exhaust system and begin tightening all connections.

10. Check along the whole length of the exhaust system to ensure that there is adequate clearance around the spare tire, fuel and brake lines or any wiring. If any interference is detected relocate or adjust. Pay particular attention to the brake flex lines and ABS wiring. Most often these can be kept clear of the exhaust by loosely tying them back. Different configurations may require a different method. It is the installer's responsibility to ensure there is enough clearance to prevent damage.



Congratulations! You are ready to begin experiencing the improved power, sound and driving excitement of your **MBRP Inc.** performance exhaust system. We know you will enjoy your purchase.