



## MORSE CABLE BATTERY DISCONNECT MOUNTING KIT INSTALLATION INSTRUCTIONS P/N 74117, 74118, 74119

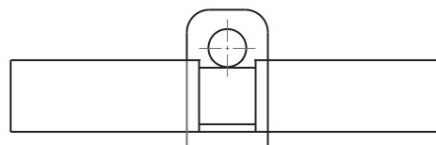
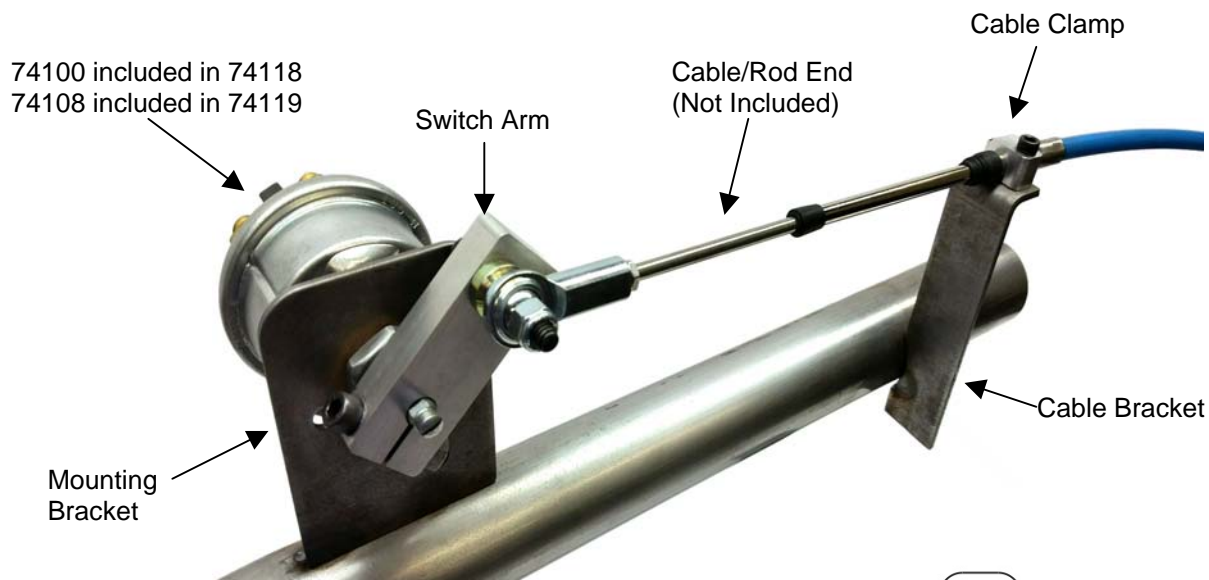


Figure A

Refer to the diagram for component placement. Assemble the unit as shown by attaching a rod end to the Morse cable, then aligning the mounting and cable brackets so the Morse cable clamp fits into the groove on the cable (see Figure A). Check for binding of the rod end in this position and mark the bracket locations on the chassis tubing. To insure a proper weld, cutting or grinding of the brackets may be required to attain as close a fit as possible. Tack weld the brackets to the marked positions on the tube. Reattach the Morse cable to the clamp and arm to verify proper alignment and actuation of the system. Disassemble the unit and finish welding the brackets to the tubing. Re-install the complete kit.

**For Technical Assistance, Call Moroso's Tech Line at  
(203) 458-0542, 458-0546 8:30am – 5:00pm Eastern Time**

MOROSO PERFORMANCE PRODUCTS, INC  
80 CARTER DR • GUILFORD, CT 06437-2116  
Phone: (203) 453-6571 • Fax: (203) 453-6906

Rev. A  
090116

74117INST

Visit Us At [www.moroso.com](http://www.moroso.com)