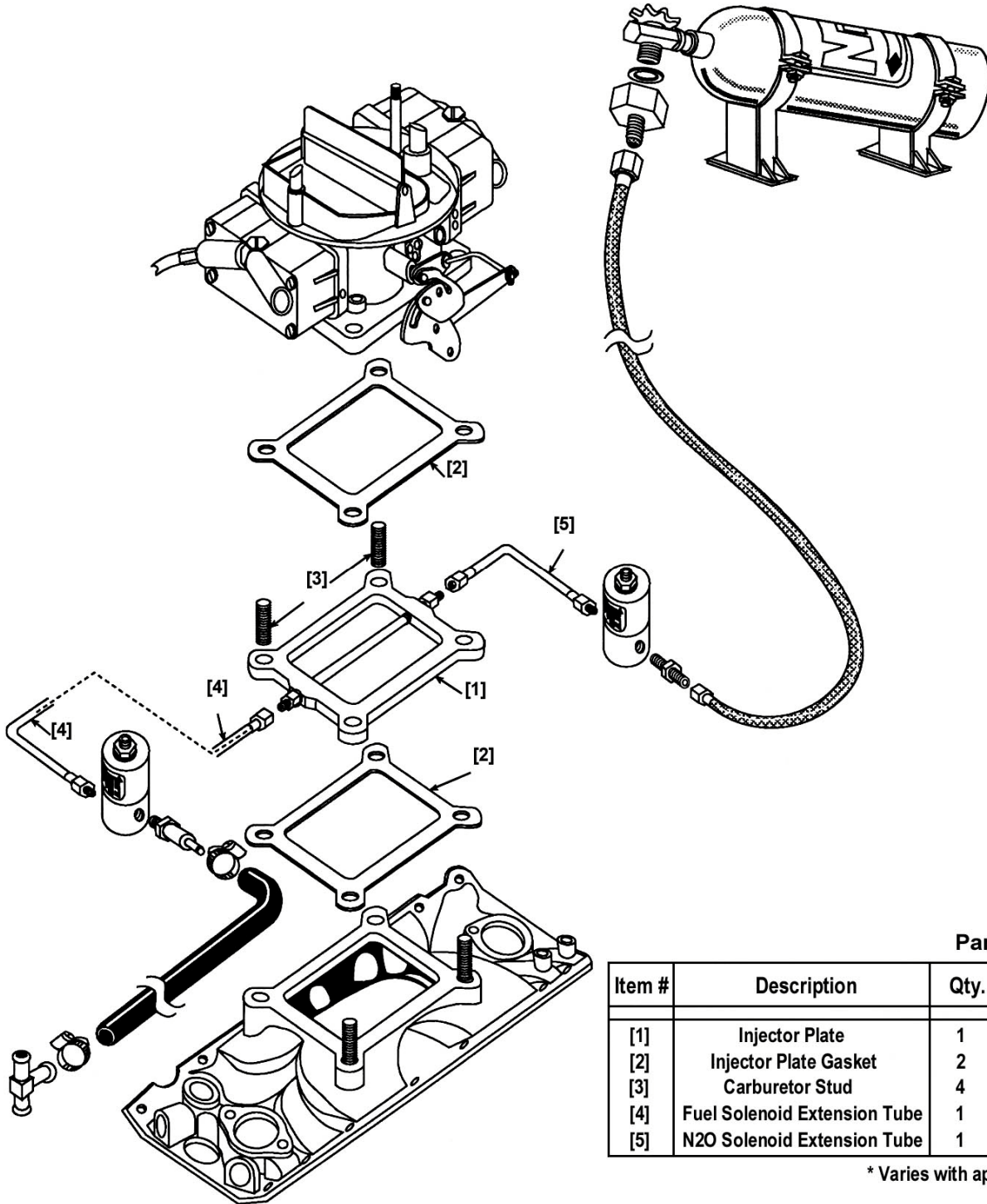


**A Holley Performance Brand**

**NOS POWERSHOT  
SINGLE CARBURETOR INJECTOR PLATE  
P/N 12520NOS & 12820NOS**

**INSTALLATION INSTRUCTIONS  
P/N A5066-SNOS**



**Parts List**

Item #	Description	Qty.	P/N
[1]	Injector Plate	1	*
[2]	Injector Plate Gasket	2	*
[3]	Carburetor Stud	4	*
[4]	Fuel Solenoid Extension Tube	1	16855
[5]	N2O Solenoid Extension Tube	1	16855

\* Varies with application

## 1.0 Injector Plate Mounting

1. Remove the carburetor inlet ducting and air cleaner.
2. Disconnect the throttle linkage and the fuel line from the carburetor.
3. Remove the carburetor and the stock carburetor studs.
4. Install the extended carburetor studs (3).
5. Install the injector plate (1) and gaskets (2) on the intake manifold with the NOS label facing up.
6. Install the carburetor and connect the throttle linkage.

## 2.0 Nitrous Solenoid Installation

**CAUTION! Do not overtighten the vise in the following procedure or the solenoid will be damaged.**

1. Clamp the nitrous solenoid base in a bench vise.
2. Install the nitrous filter fitting in the inlet port of the nitrous solenoid.
3. Install the 1/8" NPT compression fitting / nitrous solenoid extension tube (5) in the outlet port of the nitrous solenoid.
4. Remove the nitrous solenoid assembly from the vise.

**NOTE:** The extension tube may need to be shortened, depending on the application.

5. Connect and tighten the nitrous solenoid and extension tube assembly.

## 3.0 Fuel Solenoid Installation

**CAUTION! Do not overtighten the vise in the following procedure or the solenoid will be damaged.**

1. Clamp the fuel solenoid base in a bench vise.
2. Install the fuel filter fitting in the inlet port of the fuel solenoid.
3. Install the 1/8" NPT compression fitting / fuel solenoid extension tube (5) in the outlet port of the fuel solenoid.
4. Remove the fuel solenoid assembly from the vise.

**NOTE:** The extension tube may need to be shortened, depending on the application.

5. Connect and tighten the fuel solenoid and extension tube assembly.

## 4.0 Suggested Tuning Combinations for NOS Powershot – Single Carburetor System

Your NOS Powershot kit is capable of producing power increases of 115 to 125 horsepower when properly maintained. To achieve maximum performance from your system, use the following tuning tips as a guide.

**NOTE:** Your combination may vary. These guidelines are suggested as a safe starting point in tuning.

Fuel Quality	Ignition Timing	Spark Plug Heat Range
92+ octane pump gas	Standard	Standard

If your desired performance is greater than the capability of this system, contact NOS Technical Support for information on upgrading your kit.

### NOS Technical Support

Phone: 1-866-GOHOLLEY

Fax: 1-270-781-9772

For online help, please refer to the Tech Service section of our website: [www.holley.com](http://www.holley.com)

A5066-SNOS

Date: 11-20-02