

SUPER DUTY DUAL STEERING STABILIZER KIT BY RANCHO SUSPENSION

READ ALL INSTRUCTIONS THOROUGHLY FROM START TO FINISH BEFORE BEGINNING INSTALLATION

1. Park the vehicle on a level surface and set the parking brake. Place the front wheels in a straightforward position.
 2. If applicable, remove the nuts and U-bolts holding the original stabilizer bracket to the tie rod end. See illustration 1. Remove the nut and bolt from the axle bracket. Remove the original stabilizer assembly.
 3. For vehicles equipped with a Rancho suspension system, attach bracket 130024 to the leaf spring front u-bolt on the driver side. See illustrations 2 and 3. Apply thread lock and use the 5/8" hardware from kit 860485. Tighten the nuts to 55 ft. lbs.
- NOTE:** To attach bracket 130024, the leaf spring u-bolt must have at least 3/4" of exposed 5/8-18 thread.
4. Attach stabilizer bracket 130025 to u-bolt bracket 130024 with the hardware from kit 860111. See illustrations 2 and 3. Tighten nuts and bolts to 35 ft. lbs.
 5. Loosely attach tie rod bracket 130023 to the back of the tie rod with the u-bolts from kit 860484. See illustration 3.
 6. Install shock boots on stabilizer shocks. Do not install tie wraps at this time.
 7. Using the 12mm hardware from kit 860484, attach the cylinder end of stabilizer shock RS5410 to bracket 130025. Apply thread lock and attach the rod end to tie rod bracket 130023 with the hardware from kit P00847. See illustration 3.
 8. Attach the cylinder end of the second stabilizer shock to the OE axle bracket on the passenger side. Use the 12mm hardware from kit 860484. Apply thread lock and attach the rod end to bracket 130023 with the hardware from kit P00847.
 9. Slide tie rod bracket 130023 until the rods on both stabilizer shocks are extended equally. Tighten the u-bolt nuts to 35 ft. lbs. Tighten the bracket to shock nuts to 55 ft. lbs.
 10. Mark the location of the tie rod adjustment sleeve. Remove the bolts from the three adjustment sleeve clamps.
 11. Without moving the sleeve or tie rod, turn the clamps until the bolt tabs are on the front of the tie rod. See illustration 2.
 12. Mark the location of the inner clamp bolt on the front of the tie rod. Move the clamp aside and make a small groove (for clamp bolt clearance) at the marked location using a round file.
 13. Reinstall the inner clamp and all hardware. Tighten the nuts securely.
 14. Turn wheels completely in both directions. Verify that the stabilizer shocks do not bind or bottom out.
 15. Stretch the shock boot on the stabilizer shock. Install the tie wrap.

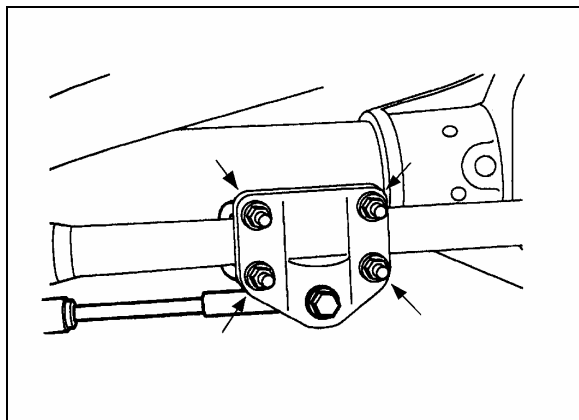


Illustration 1



Illustration 2

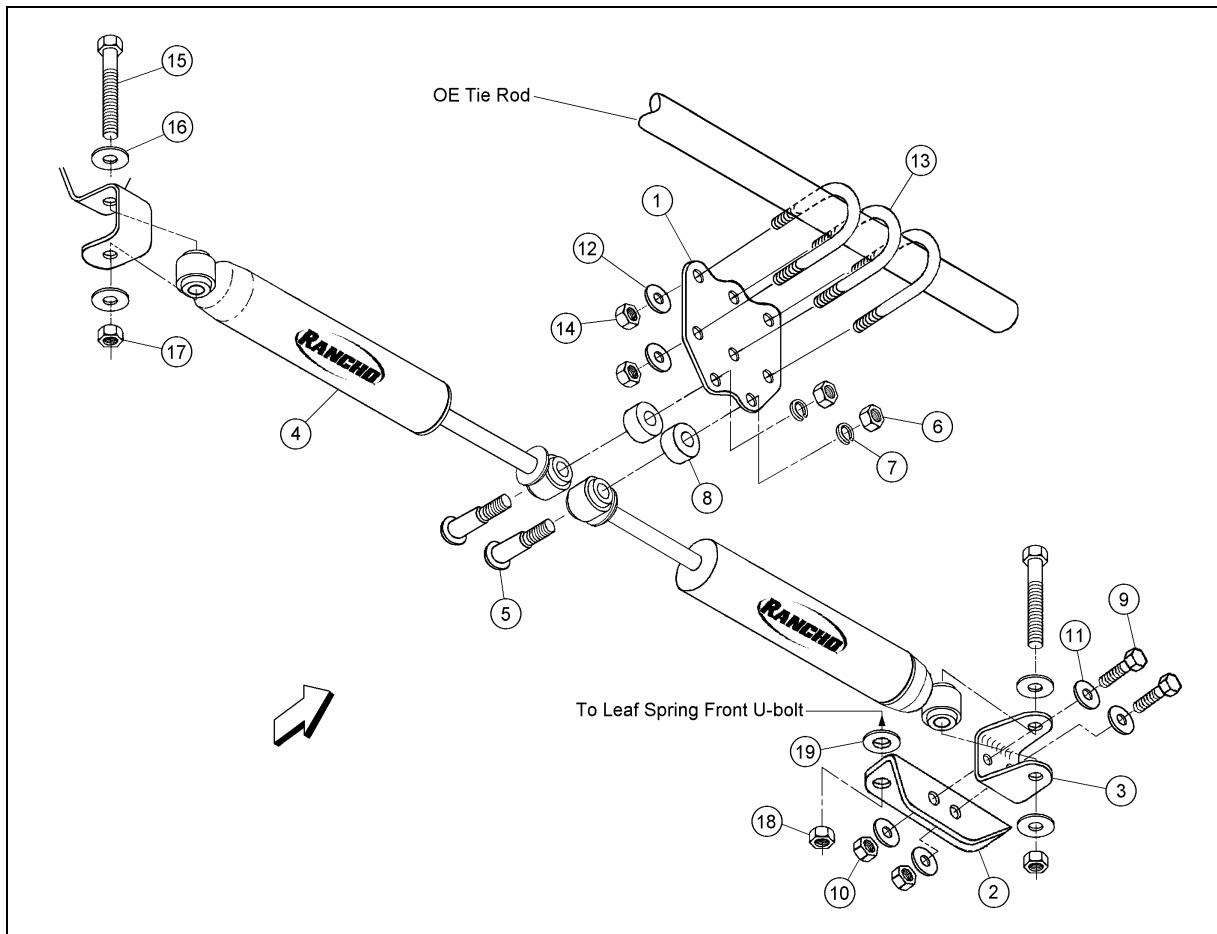


Illustration 3

RS98509 PARTS LIST

ITEM NO.	PART NO.	DESCRIPTION	QUANTITY
1	130023	Tie Rod Bracket	1
2	130024	U-bolt Bracket	1
3	130025	Stabilizer Bracket	1
4	5410	Stabilizer Shock	2
	P00847	Parts Package	2
5		1/2-20UNF-2AX1.47 Bolt	1
6		1/2-20 Nut	1
7		1/2 Lock Washer	1
8		Spacer	1
		Boot	2
		Tie Wrap	2
	860111	3/8 Hardware Kit	1
9		3/8-16 x 1.25 HHCS	2
10		3/8-16 Stover Nut	2
11		3/8 SAE Washer	4
	860484	U-bolt Hardware Kit	1
12		3/8 SAE Washer	6
13		U-bolt	3
14		3/8-16 Nyloc Nut	6
15		M12-1.75 x 70 HHCS	2
16		M12-1.75 Nut	2
17		M12 Washer	4
	860485	5/8 Hardware Kit	1
18		5/8-18 Nut	2
19		5/8 SAE Washer	4
		Thread Lock	1
	88059	Instruction	1