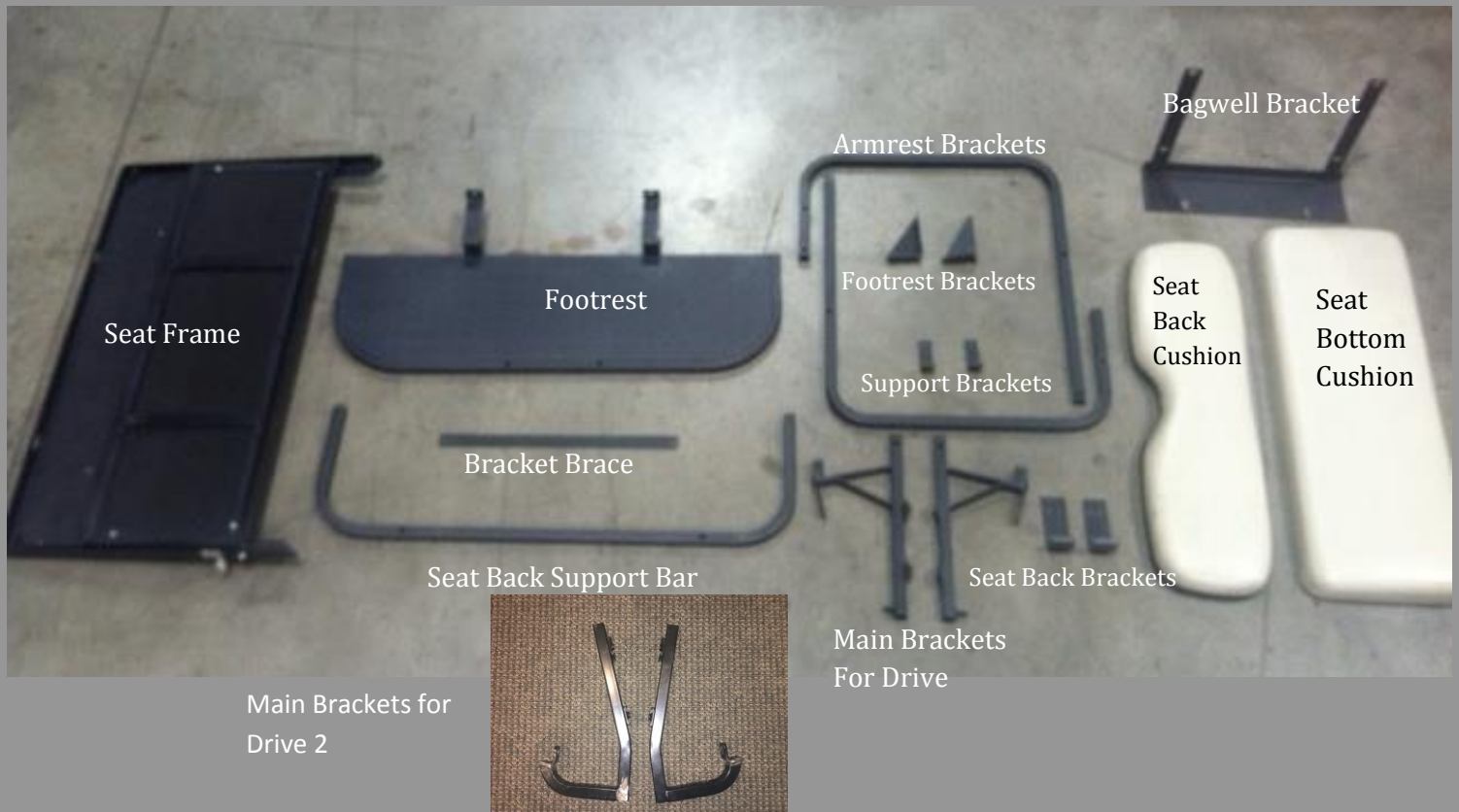


## Installation Instructions for Yamaha Drive / Drive 2 2n1 Rear Flip Seat Kit

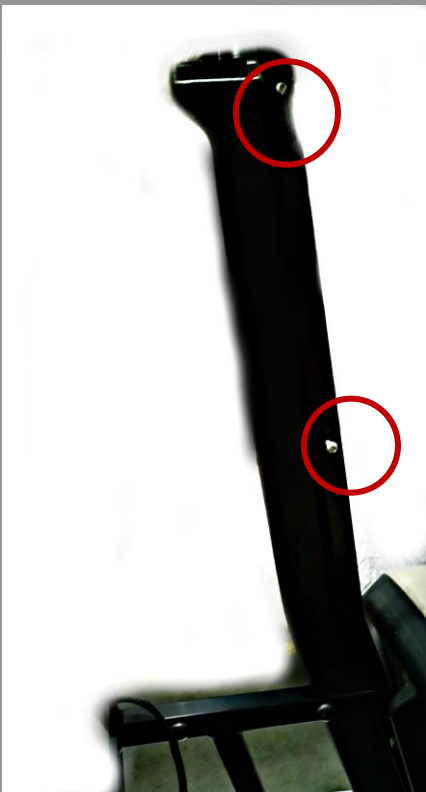
### This Kit Includes:

- (2) Main Brackets for Drive
- (2) Main Brackets for Drive 2
- (1) Bagwell Bracket
- (2) Footrest Brackets
- (2) Seat Back Brackets
- (1) Seat Back Cushion
- (1) Seat Bottom Cushion
- (2) Support Brackets
- (1) Seat Back Support Bar
- (1) Bracket Brace
- (2) Armrest Brackets
- (1) Seat Frame
- (1) Footrest
- (1) Strap
- (8) Hardware Packs



Step 1:

Remove hardware  
from struts and  
take off canopy.  
Retain hardware.



Step 2:

Remove hardware  
from gutters – you  
will reuse. Remove  
gutters by sliding  
them upward.

Step 3:

Remove rear strut  
from both sides.  
Retain all hardware.



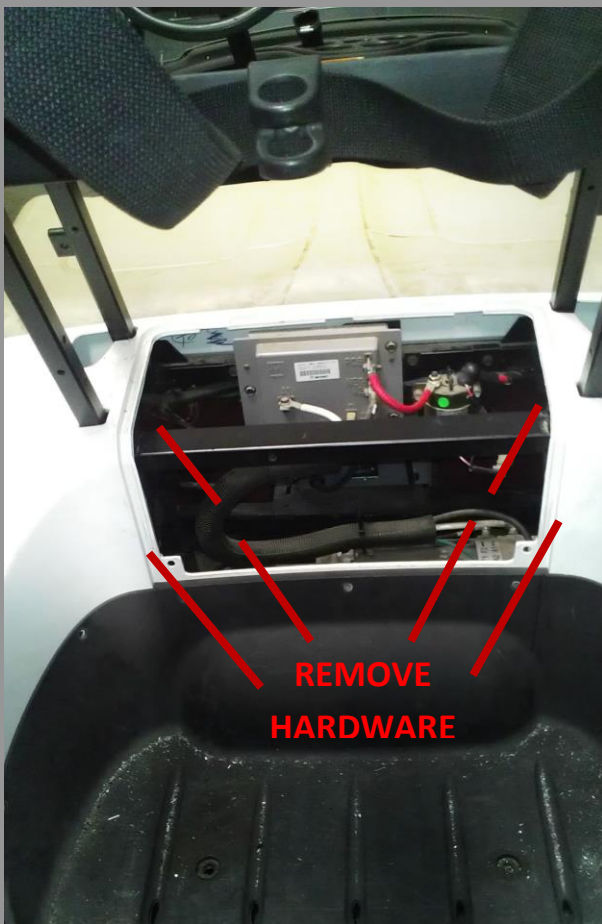
Step 4:

Remove the seat  
back. Retain  
hardware.

Step 5:

Remove motor cover panel by popping out plastic rivets. Retain hardware.

Note: This step excluded from Drive 2



Step 6:

Take off brackets with basket. Retain hardware to be used in Step 7.



Step 7:

Using hardware from Step 6, install the (2) main brackets, supplied in kit.

\*Car Specific - Drive or Drive 2



Step 8:

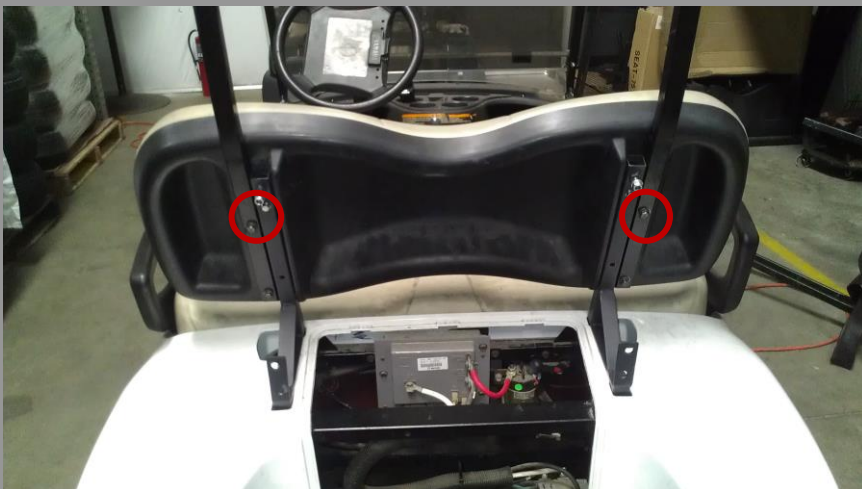
Attach rear struts to the main brackets using hardware retained from Step #3.



**Step 9:**

**Attach bracket brace  
to main brackets  
using hardware from  
Pack #1.**

**NOTE: This step  
excluded for Drive 2**

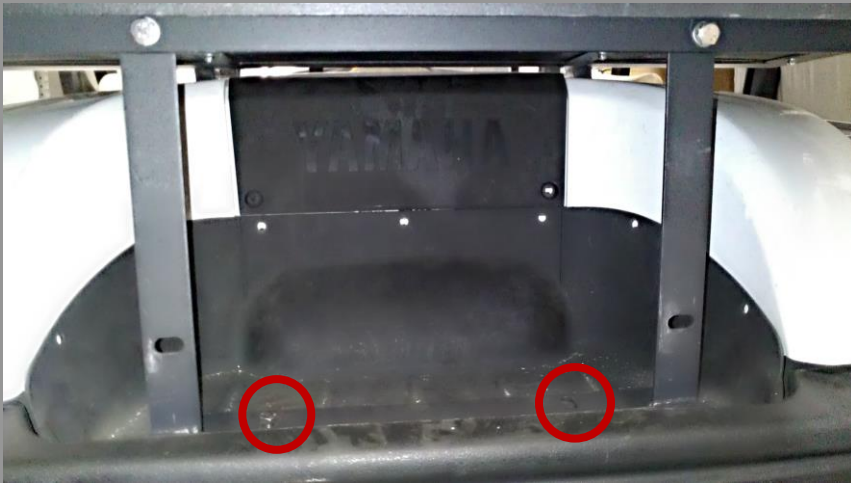


**Step 10:**

**Attach seat back to  
brackets using  
hardware retained  
from Step #4.**

**Step 11:**

Remove factory bolts from bagwell. Make each hole larger by drilling it out with a 7/16 drill bit through the top and bottom frame. Or use 6mm bolt in hardware pack #1 with factory hole.



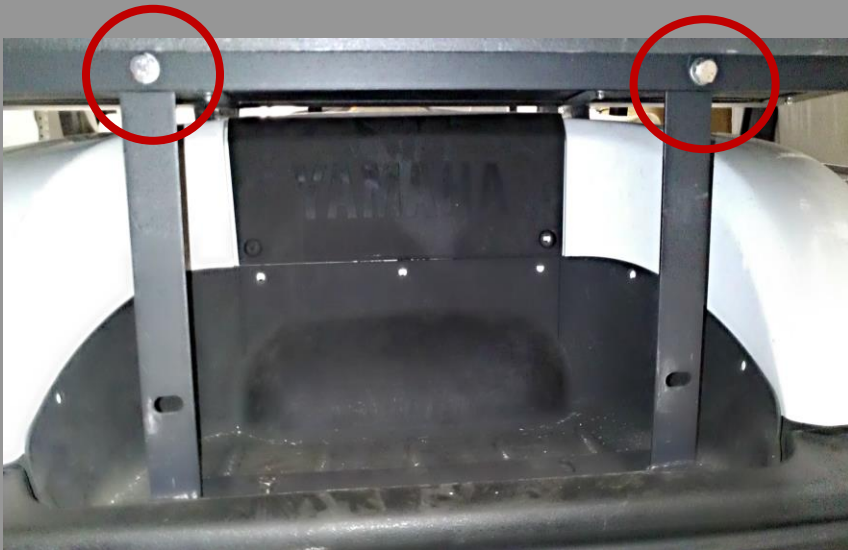
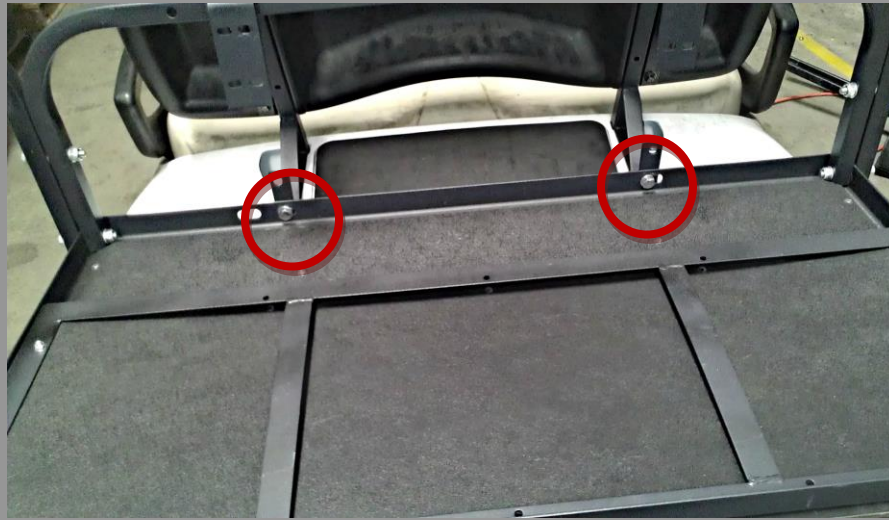
**Step 12:**

Attach bagwell bracket using hardware from pack #1.

Step 13:

Attach seat frame to  
main brackets using  
hardware from pack  
#2.

\*Leave all hardware finger tight.



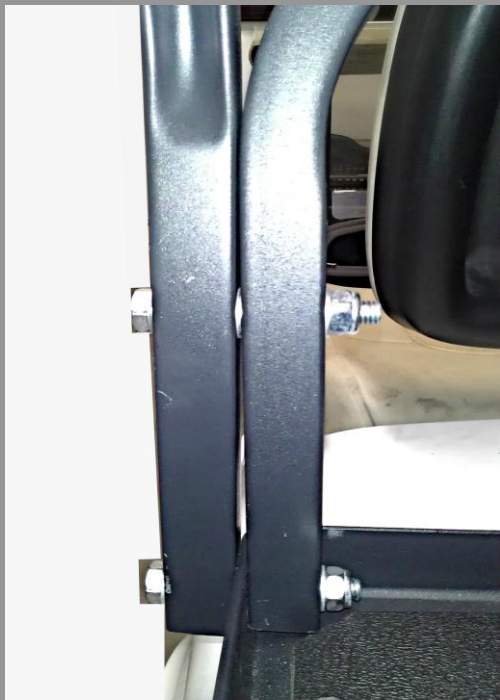
Step 14:

Attach seat frame  
to bagwell bracket  
using hardware  
from pack #2.



**Step 15:**

Attach seat back support bar and armrests to seat frame using hardware from pack #3.



**Step 16:**

Make sure to use (2) washers from pack #3 between seat back support bar and armrest, as shown.

Step 17:

Attach each armrest to rear portion of seat frame using hardware from Pack #3.



Step 18:

(A) Attach footrest to bagwell bracket using remaining hardware from pack #2.

(B) Attach footrest brackets to footrest using remaining hardware from pack #3.

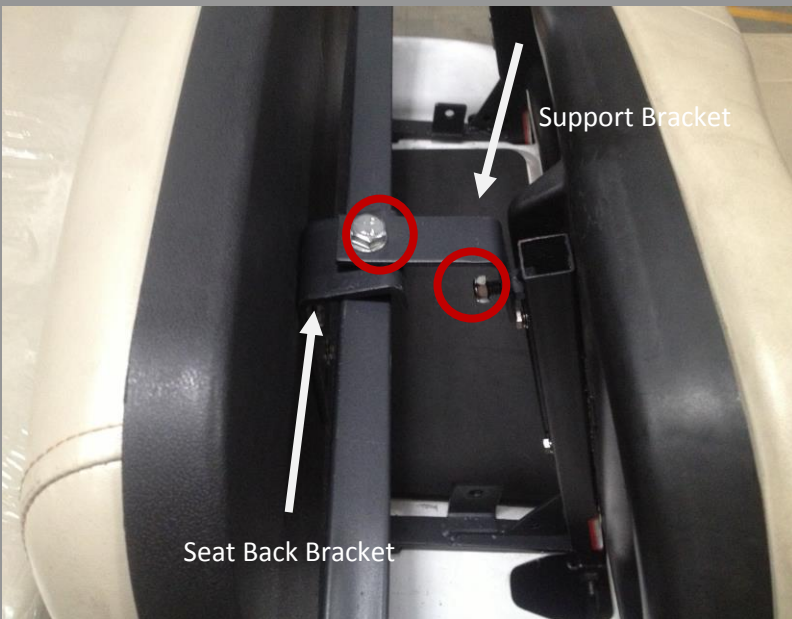


**Step 19:**

Attach seat back brackets to the seat back cushion using hardware from pack #5.



Note: Small Support Bracket for Drive Only



**Step 20:**

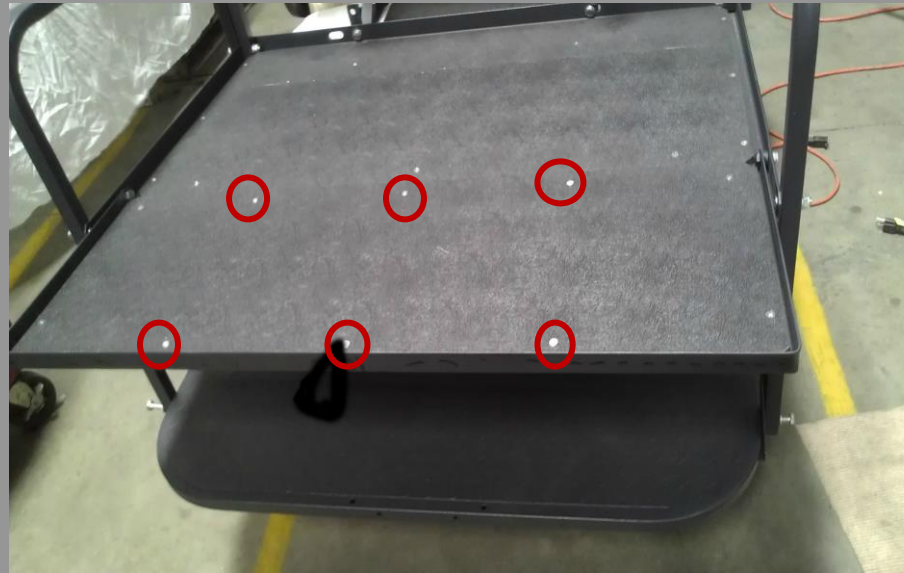
Attach Seat Back & Support Bracket to Seat Back Support Bar, using hardware from Pack #1 & Pack #4.

Now tighten all hardware.

\*Note: Before installing the seat back brackets, make sure the cushion is attached.

**Step 21:**

Attach seat bottom  
and strap to seat  
frame using  
hardware from  
pack #6.



**Step 22:**

Insert gutters and  
attach canopy using  
hardware from step  
#1.



# Hardware Packs:

## Hardware Pack 1:

- (2) 10mm x 90mm shoulder hex bolts
- (2) 6mm x 45mm shoulder hex bolts
- (4) 10mm x 24mm x 2mm washers
- (2) 6mmx24mmx2mm washers
- (2) 10mm anti-slip nuts
- (2) 8mm Anti-slip nuts

## Hardware Pack 4:

- (2) 10mm x 50mm shoulder hex bolts
- (4) 10mm x 24mm x 2 mm washers
- (2) 10mm anti-slip nuts

## Hardware Pack 2:

- (6) 10mm x 25mm shoulder hex bolts
- (12) 10mm x 24mm x 2mm washers
- (6) 10mm Anti-slip nuts

## Hardware Pack 5:

- (4) 6mm x 20mm shoulder hex bolts
- (4) 6mm x 18mm x 1.5mm washers

## Hardware Pack 3:

- (6) 10mm x 70mm shoulder hex bolts
- (2) 10mm x 45 mm Phillips head bolts
- (16) 10mm x 24mm x 2mm washers
- (8) 10mm Anti-slip nuts

## Hardware Pack 6:

- (9) 6mm x 40 mm Wood screws
- (2) 6mm x 18mm x 1.5mm washers