

2003 Dodge 2500 and 3500 4x4 Dual Steering Stabilizer Part # 7213

ITEM#	DESCRIPTION	QTY
7000WS	WHITE STEERING DAMPER	2
7213-MB	03DODGE,MAIN BRACKET	1
7213-PB	03DODGE,PASSENGER BRACKET	1
7213-DB	03DODGE,DRIVER BRACKET	1
12X3FTB	1/2 X 3 FINE THREAD BOLT	1
12X212FTB	1/2 X 2 1/2 FINE THRD BOLT	1
12X112FTB	1/2 X 1 1/2 FINE THRD BOLT	1
38X114FTB	3/8 X 1 1/4 FINE THD/GRD 8	4
516X114X134U	5/16 X 1 1/4 X 1 3/4 U-BT R	2
140629	EB6 STUD BAG - P932/140629	4
142121	ES24 SLEEVE/402087 1.38"	1

ITEM#	DESCRIPTION	QTY
81004	TAPERED SLEEVE, 1/2" I.D.	1
12FTN	1/2-20 FINE N/I LOCK NUT	3
38FTN	3/8-24 FINE N/I LOCK NUT	4
516CTN	516-18 COARSE N/I LOCK NUT	4
12SAEW	1/2 SAE WASHER	6
38SAEW	3/8 SAE WASHER	8
516SAEW	5/16 SAE WASHER	8
HSS	HYDRO SHOCK DECAL	2
B10RS	RED BOOT	2
BTIE	RED BOOT TIE	2
HOURLASS 5/8	SHOCK BUSHING	4

(Park the vehicle on level ground with the tires pointing straight forward).

1. Set the emergency brake and block the rear tires. Remove OEM steering stabilizer from factory mount on axle and draglink.
2. Attach passenger side bracket to OEM stabilizer mount on axle using the 1/2 x 3" fine thread bolt, washers, and lock nut. Be sure to install the 1.38" anti-crush sleeve inside the factory mount, part # 142121. (See Arrow in Photo #1).
3. Now mark and drill the two lower mounting holes to 3/8". Once drilled, install the 3/8 x 1 1/4" fine thread bolts washers and nuts. (See Arrow in Photo #2).
4. Attach driver side bracket to the mounting hole in the bottom of the coil spring mount. Attach using the 1/2 x 1 1/2" fine thread bolt, washers, and nut. (See Arrow in Photo #3). Once installed, mark and drill the two lower holes the same as in step# 2. Attach using the 3/8 x 1 1/4" fine thread bolts, washers, and nuts.
5. Install the tapered sleeve (part# 81004) into the factory mount on drag link. Attach the main bracket at this location using the 1/2 x 2 1/2 fine thread bolt, washers, and lock nut. Also attach the 5/16 x 1 1/4 x 1 3/4" u-bolts, washers, and lock nuts. (See Photo# 4).
6. With all brackets installed, attach the new double ended studs to each bracket. Studs will mount to the top of the outer brackets, and to the bottom of the main bracket. Slide boot over shaft of steering stabilizers and attach with supplied boot tie. Install bushings into each end of stabilizer. Attach stabilizers onto studs and tighten. (See Photo# 5).
7. Once steering stabilizer is installed, check all brackets and bolts for proper installation. Cycle steering left to right and check all parts for adequate clearance. Retighten all hardware after the first 100 miles.

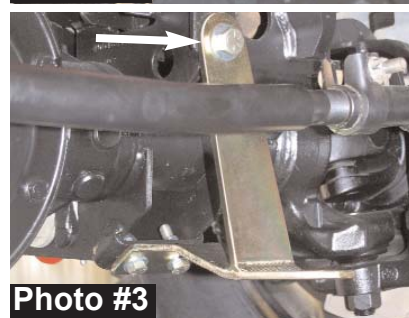
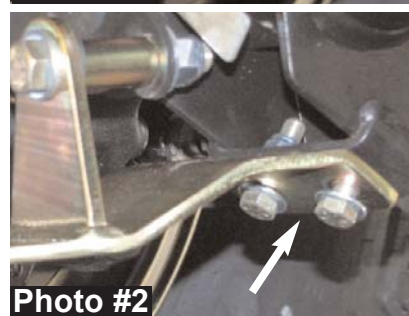
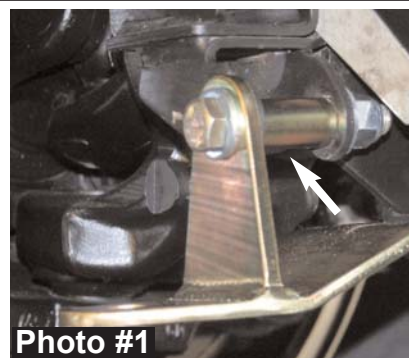


Photo #4

Photo #5

Photo #6