



99-02 GM K1500 Dual Steering Stabilizer Part # 7296

PARTS LIST

| ITEM# | DESCRIPTION | QTY |
|---------|-----------------------------|-----|
| 7500WS | WHITE STEERING DAMPER | 2 |
| B12RS | RED BOOT | 2 |
| BTIE | RED BOOT TIE | 2 |
| HSS | HYDRO SHOCK DECAL | 2 |
| HB-7296 | HARDWARE BAG FOR 7296 | 1 |
| I-7296 | INST. SHEET FOR 7296 | 1 |
| 58X5FTB | 5/8 X 5 FINE THREAD BOLT | 2 |
| 58FTN | 5/8-18 NYLON INSERT LOCKNUT | 2 |
| 58SAEW | 5/8 SAE WASHERS | 4 |

HARDWARE BAG LISTING

| ITEM# | DESCRIPTION | QTY |
|---------------|--------------------------------|-----|
| C966DSMB-S | GM 1/2T,DUAL STAB MAIN BRKT | 1 |
| C966DSST-S | GM 1/2T,DUAL STAB TAB BRKT | 2 |
| 140629 | STEERING STAB STUD PACKAGE | 2 |
| 516X114X134U | 5/16 X 1 1/4 X 1 3/4 U-BOLT | 2 |
| 516CTN | 516-18 COARSE N/I LOCK NUT | 4 |
| 516SAEW | 5/16 SAE WASHER | 4 |
| 38X1TCFB | 3/8 X 1 THRD-CUTTER FLANGE BLT | 2 |
| 142120 | STEERING STAB WASHER PKG. | 2 |
| HOURLASS 5/8 | HOURLASS 5/8 SHOCK BUSHING | 2 |
| STEM BUSH-SST | STEM BUSHING-STEERING STAB. | 4 |

(Park the vehicle on level ground with the tires pointing straight forward).

1. While supporting the front cross member with floor jack, remove the front lower A-Arm bolt at the frame. (If installing on a vehicle with 4" of more lift, it will be the upper front bolt on the after market cross member. Remove the bolt using 15/16 socket. (See Photo #1). Note: A 5/8 x 5" Fine thread bolt, washers and nuts are supplied in case the existing bolts are not long enough.
2. Once bolt is removed, reinstall with new outer stabilizer bracket. Be sure to install bolt pointing toward the front. Drill inside mounting hole using 5/16 drill bit. Then install 3/8 thread cutter bolt. (See Photo #2). Arrow shows drill bit.
3. Attach shock stud to bracket being sure to use washers. (See Photo #3).
4. Install main bracket to center steering link using (2) 516X114X134 U-Bolts with washers and lock nuts. Measure from center of pitman arm 9". Mount the center of the main bracket at this point. Slightly adjust the main bracket, as needed, so that both stabilizers are pulled out half way. (See Photo #5).
5. Attach both shocks to outer brackets and the main bracket. (See Photo #4 and #5).
6. Once steering stabilizer is installed, check all brackets and bolts for proper installation. Cycle steering left to right and check all parts for adequate clearance. retighten all hardware after the first 100 miles.

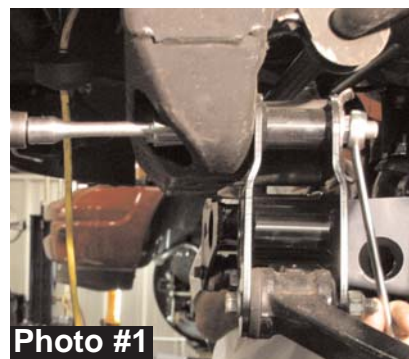


Photo #1

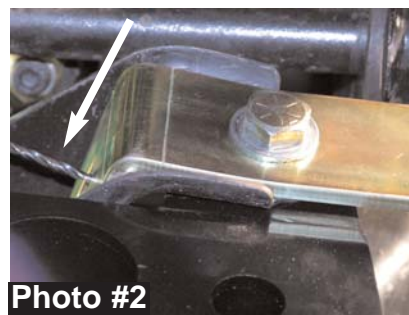


Photo #2

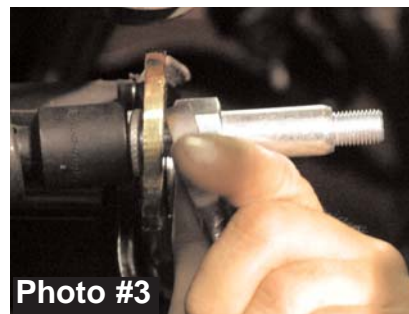


Photo #3



Photo #4

I-7296 12-04

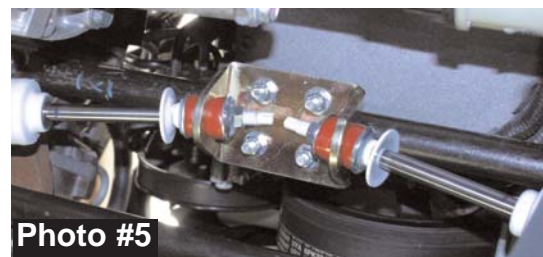


Photo #5

Seat Belts Save Lives, Please Wear Your Seat Belt.

* This steering stabilizer kit is designed for the 99-02 GM 1/2 ton 4WD. It will fit lift heights 4-6". This kit will **NOT** work on vehicles with a lift kit that relocates the upper A-Arms.