

Required Tools List:

- Standard / Metric Wrenches and Sockets
- Floor Jack
- Jack Stands

Before beginning the installation, read these instructions and the enclosed driver's WARNING NOTICE thoroughly and completely. Also affix the WARNING decal in passenger compartment in clear view of all occupants. If any of these items are missing from this instruction packet, do not proceed with installation, but call SKYJACKER® to obtain needed items. If you have any questions or reservations about installing this lift kit, call SKYJACKER® at 318-388-0816 for Technical Assistance or Customer Service departments.



IMPORTANT NOTES:

- A) Please refer to Parts List to insure that all parts and hardware are received prior to disassembly of vehicle. If any parts are found to be missing, contact your dealer as soon as possible.
- B) If a Skyjacker Rock Ready Suspension is NOT used, a 1 inch body & motor mount will have to be installed for transmission clearance. The SP283 & SP284 gives 1 1/2 more ground clearance over stock.

Kit Box Breakdown:

SP283:

<u>ITEM#</u>	<u>DESCRIPTION</u>	<u>QTY</u>
SPA283	SKID PLATE ASSEMBLY	1
EB2834-S	SP283/SP284 EXHAUST BRACKET	1
TM2834-S	SP283/SP284 TRANS MOUNT	1
SP2834-S-4	AIR COMP BRACKET BENT	1
SP2834-S-5	AIR COMP BRACKET FLAT	1
HB-SP283	HDWR BAG: SP283 SP284 SKIDS	1

SP284:

<u>ITEM#</u>	<u>DESCRIPTION</u>	<u>QTY</u>
SPA284	SKID PLATE ASSEMBLY	1
EB2834-S	SP283/SP284 EXHAUST BRACKET	1
TM2834-S	SP283/SP284 TRANS MOUNT	1
SP2834-S-4	AIR COMP BRACKET BENT	1
SP2834-S-5	AIR COMP BRACKET FLAT	1
HB-SP283	HDWR BAG: SP283 SP284 SKIDS	1

Hardware Bag Breakdown:

HB-SP283

<u>ITEM#</u>	<u>DESCRIPTION</u>	<u>QTY</u>
516X1FTB	5/16 X 1 FINE THRD BOLT	4
516SAEW	5/16 SAE WASHER	12
516X1BHB	5/16 X 1 BUTTON HEAD BOLT	4
516FTN	5/16" FINE THRD N/I LOCKNUT	4
516CTN	5/16-18 COARSE N/I LOCK NUT	4
716X1FTB	7/16 X 1 BOLT,FINE THD GRD8	4
716SAEW	7/16 SAE WASHER	8
716FTN	7/16-20 FINE N/I LOCK NUT	4

1. Park vehicle on level ground and set the emergency brake. Properly support the transmission using a floor jack and jack stands in preparation for removing the factory skid plate.
2. Remove the factory skid plate and exhaust bracket. Install the factory rubber bushings into the new exhaust bracket. (See Photo #1)
3. Attach the new exhaust bracket to the new transmission mount using the 5/16 x 1" hardware. (Exhaust bracket will mount to the bottom side of the transmission bracket).
4. Install exhaust bracket and transmission bracket. Attach the transmission bracket to the transmission using the factory hardware. Attach the factory rubber mount to the bottom of the transmission bracket using the 7/16 x 1" hardware. (See Photo #2)
5. Attach the Air Compressor (Rubicon models) bracket to the side of the new skid plate using the 5/16 x 1" Button head bolts. Place spacer over the mounting location closest to the center of the skid plate. (See Photo #3)
6. Attach the Air Compressor bracket to the relocation bracket using the 5/16 x 1" hardware supplied. Attach to the inner mount using the 5/16 x 1" Button head bolts. (See Photo #4)
7. Attach the new Skid Plate to the frame using the factory bolts. Be sure to attach the rubber mount using the factory hardware. (See Photo #5)

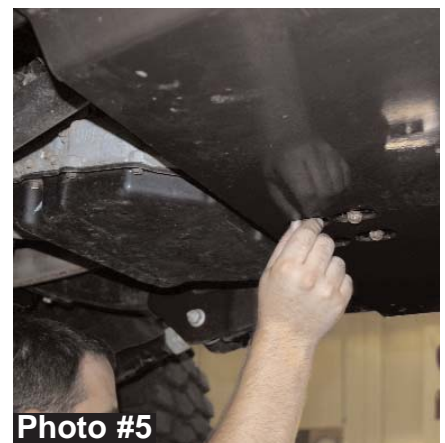
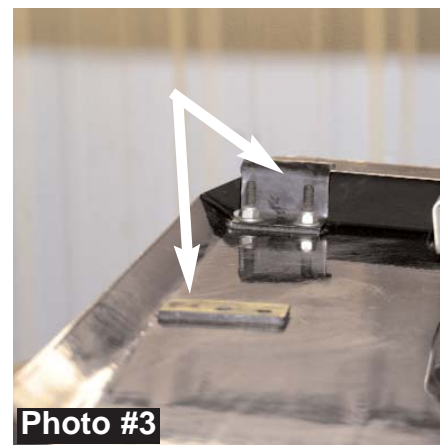


Photo #4

Photo #5