

# ROUGH COUNTRY

## SUSPENSION SYSTEMS®

### Toyota Tacoma 2005 - 15 Rear Bumper

Thank you for choosing Rough Country for all your vehicle needs.

Please read instructions before beginning installation. Check the kit hardware against the kit contents shown below. Be sure you have all needed parts and know where they go. If questions exist, please call us @1-800-222-7023. We will be happy to answer any questions concerning this product. Check all fasteners for proper torque. Check to ensure for adequate clearance between all components. **Periodically check all hardware for tightness.**



#### Torque Specs:

Size	Grade 5	Grade 8	Size	Class 8.8	Class 10.9
5/16"	15 ft/lbs	20ft/lbs	6MM	5ft/lbs	9ft/lbs
3/8"	30 ft/lbs	35ft/lbs	8MM	18ft/lbs	23ft/lbs
7/16"	45 ft/lbs	60ft/lbs	10MM	32ft/lbs	45ft/lbs
1/2"	65 ft/lbs	90ft/lbs	12MM	55ft/lbs	75ft/lbs
9/16"	95 ft/lbs	130ft/lbs	14MM	85ft/lbs	120ft/lbs
5/8"	135ft/lbs	175ft/lbs	16MM	130ft/lbs	165ft/lbs
3/4"	185ft/lbs	280ft/lbs	18MM	170ft/lbs	240ft/lbs



# INSTALLATION INSTRUCTIONS

MODEL: TOYOTA TACOMA 2005-2015 (Models with factory receiver hitch)

## PARTS LIST

ITEM/NO	PICTURE	DESCRIPTION	QTY
1		REAR BUMPER	1
2		WASHER M12	12
3		LOCK WASHER M12	6
4		HEX NUT M12	6
5		HEX BOLT M12x35	6
6		BUTTON HEAD BOLTS M6x20	4
7		WASHER M6	4
8		LOCK WASHER M6	4
9		CLIP NUTS M6	4
10		SCREW M4	2
11		CLIP NUTS M4	2
12		D-ring	2

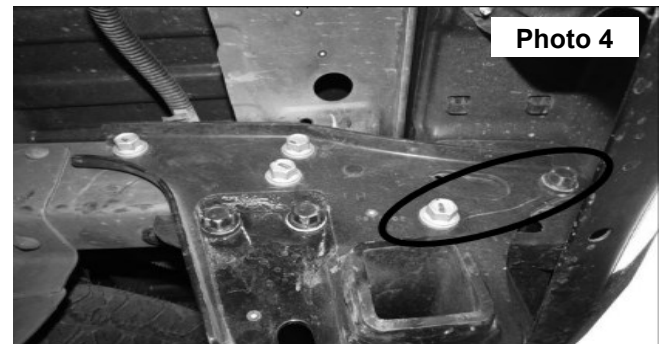
## Tools Required

- Socket Wrench with Extension
- Breaker Bar
- 19mm, 18mm, and 17mm, Wrenches and Sockets
- Flat and Phillips Head Screw Drivers
- Allen wrench set

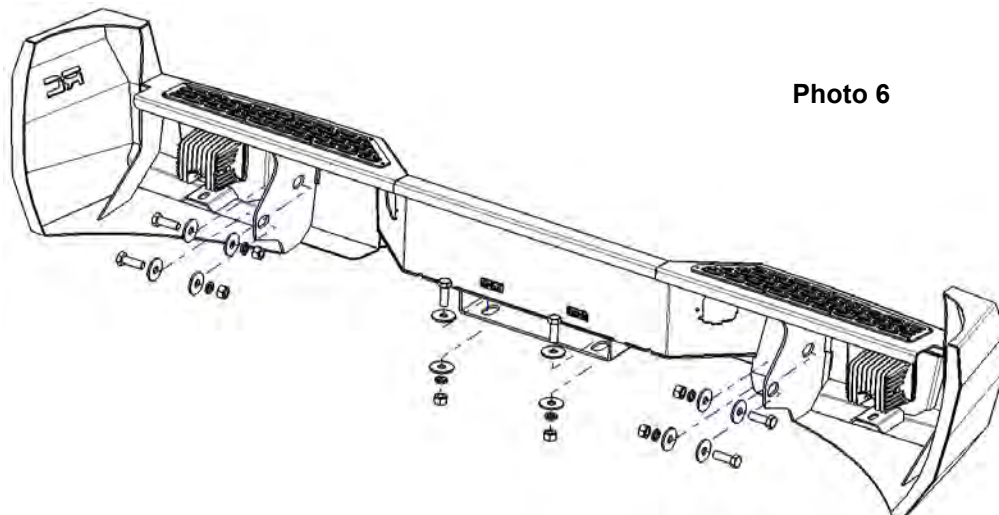
1. Disconnect the electrical plugs to the license plate lights. Use a small Phillips head screwdriver to remove the screws from the light housing. Remove the license plate lights from the bumper and set aside for later. **See Photo 1.**
2. Remove the plastic caps that cover the two bolts holding the factory bumper to the factory receiver hitch. **See Photo 2.**



3. Use a 19mm socket and wrench to remove the bolts holding the factory bumper to the trailer hitch bar. **See Photo 3.**
4. Use a 17mm socket or wrench to remove the bolts holding the factory bumper to the frame rails of the vehicle. **NOTE:** There are two bolts per side. **See Photo 4.**



5. Remove the factory bumper from the vehicle. **See Photo 5.**
6. Use supplied M12 x 35mm hex head bolt, lock washer, and nut to secure the new bumper to the vehicle frame rails and middle of the hitch. Tighten with a 18mm wrench. **See Photo 6.**





7. Install supplied M4 clip nut where the factory license plate light goes. **See Photo 7.**
8. Insert the license plate light into the hole of the bumper and thread the M4 screw into the previously installed clip nut. Connect the electrical plug when finished. **See Photo 8.**



By purchasing any item sold by Rough Country, LLC, the buyer expressly warrants that he/she is in compliance with all applicable, State, and Local laws and regulations regarding the purchase, ownership, and use of the item. It shall be the buyers responsibility to comply with all Federal, State and Local laws governing the sales of any items listed, illustrated or sold. The buyer expressly agrees to indemnify and hold harmless Rough Country, LLC for all claims resulting directly or indirectly from the purchase, ownership, or use of the items.

