

FORD 2015-23 F-150 Tailgate Assist

Thank you for choosing Rough Country for all your vehicle needs.

Please read instructions before beginning installation. Check the kit hardware against the kit contents shown below. Be sure you have all needed parts and know where they go.

If question exist, please call us @1-800-222-7023. We will be happy to answer any questions concerning this product.

Check all fasteners for proper torque. Check to ensure for adequate clearance between all components.

Periodically check all hardware for tightness.

KIT CONTENTS:

- Assist Cylinder x1
- Assist Bed Bracket x1
- Assist Tailgate Bracket x1

TOOLS NEEDED:

- T30 Torx Bit
- T50 Torx Bit
- 5mm Allen Wrench
- 10mm Socket

HARDWARE INCLUDED:

- 8mm-1.25 x 25 Bolt x1



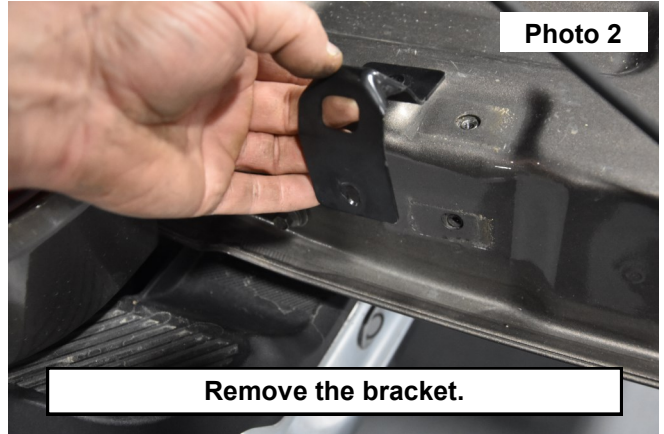
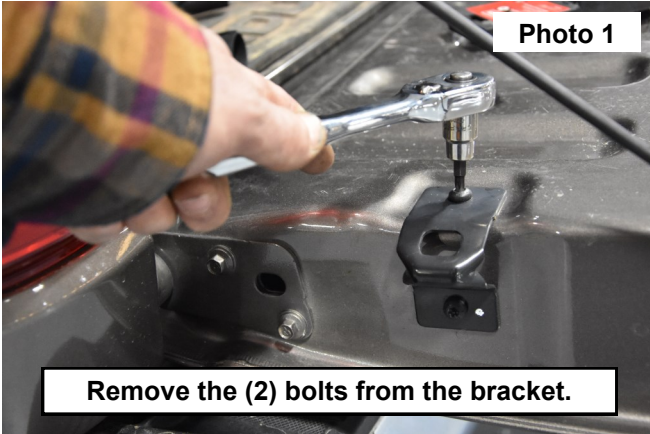
Torque Specs:

Size	Grade 5	Grade 8	Size	Class 8.8	Class 10.9
5/16"	15 ft/lbs	20ft/lbs	6MM	5ft/lbs	9ft/lbs
3/8"	30 ft/lbs	35ft/lbs	8MM	18ft/lbs	23ft/lbs
7/16"	45 ft/lbs	60ft/lbs	10MM	32ft/lbs	45ft/lbs
1/2"	65 ft/lbs	90ft/lbs	12MM	55ft/lbs	75ft/lbs
9/16"	95 ft/lbs	130ft/lbs	14MM	85ft/lbs	120ft/lbs
5/8"	135ft/lbs	175ft/lbs	16MM	130ft/lbs	165ft/lbs
3/4"	185ft/lbs	280ft/lbs	18MM	170ft/lbs	240ft/lbs

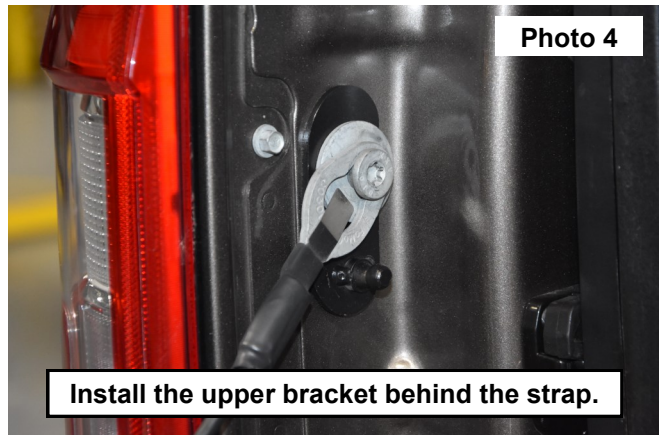


INSTALLATION INSTRUCTIONS

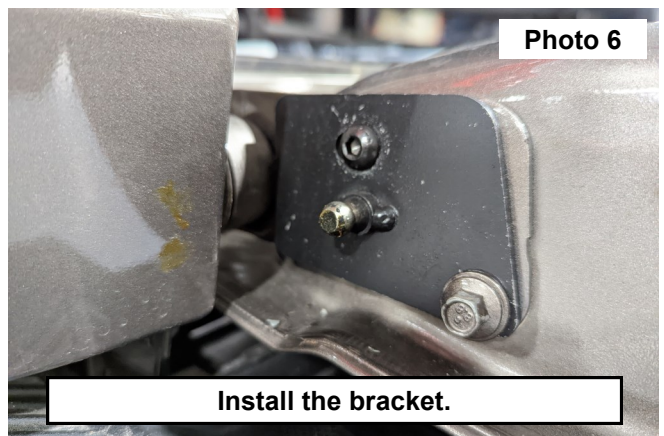
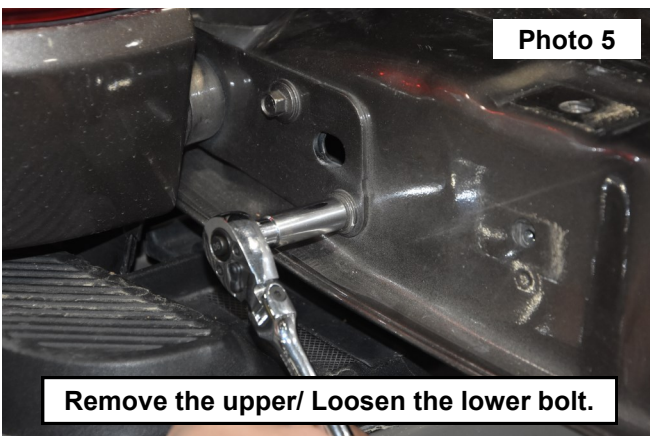
1. Remove the (2) bolts from the bracket on the lower part of the tailgate using a T30 Torx bit. **See Photo 1.**
2. Remove the bracket from the tailgate. **See Photo 2.**



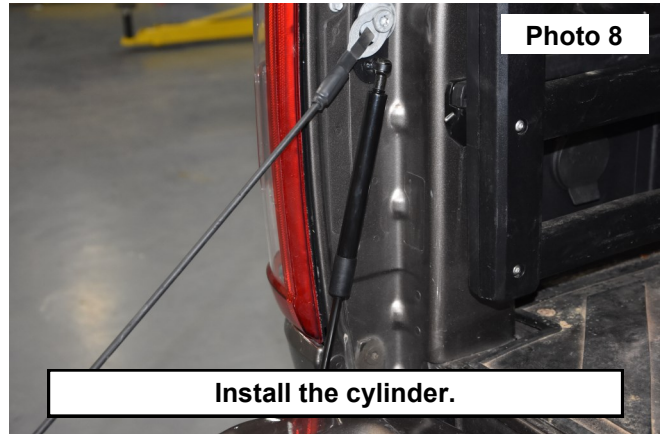
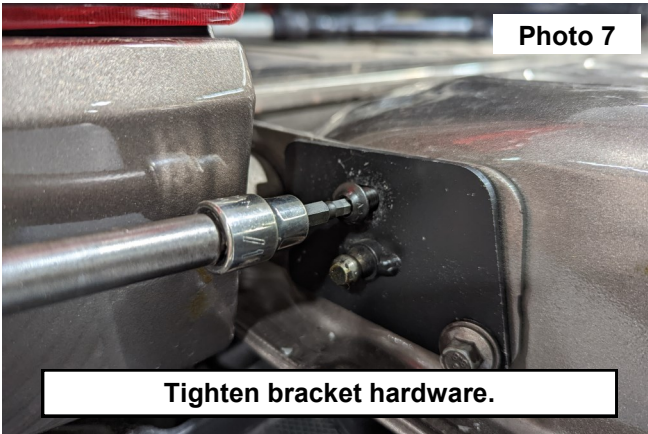
3. Support the tailgate and remove the upper strap bolt using a T50 Torx bit. **See Photo 3.**
4. Install the upper bracket behind the strap using the OE bolt, Tighten using a T50 Torx bit. **See Photo 4.**



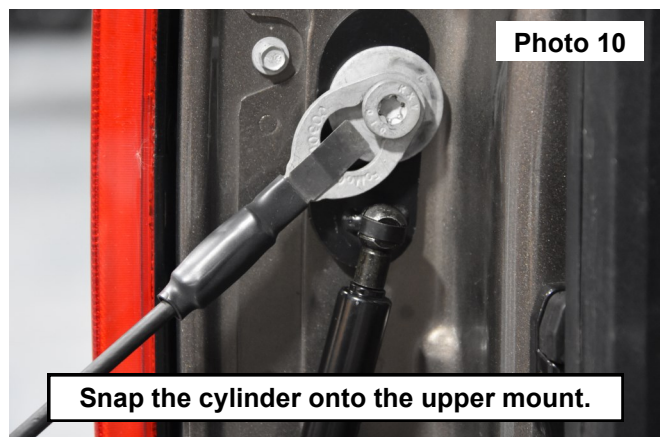
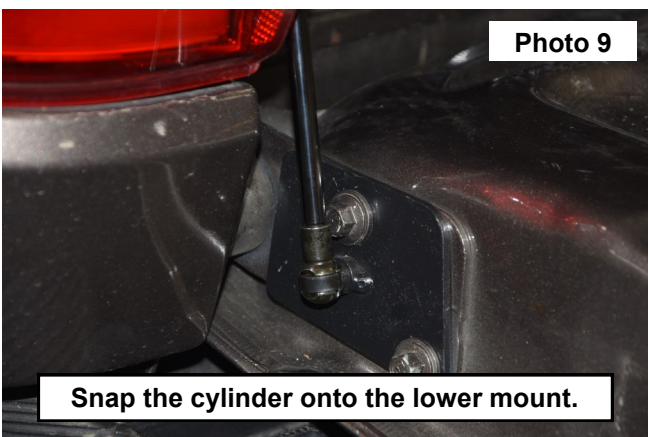
5. Remove the upper bolt from the tailgate mounting bracket, Then loosen the bottom bolt enough to slid the bracket slot under the bolt using a 10mm socket. **See Photo 5.**
6. Install the bracket onto the tailgate and secure the upper mount using (1) of the supplied 8mm button head bolts. **See Photo 6.**



7. Tighten the upper bolt using a 8mm Allen wrench. Then tighten the lower bolt using a 10mm socket. **See Photo 7.**
8. Install the cylinder onto the upper and lower mounts. **See Photo 8.**



9. Snap the cylinder onto the stud on the lower mount. **See Photo 9.**
10. Snap the cylinder onto the stud on the upper mount. **See Photo 10.**



By purchasing any item sold by Rough Country, LLC, the buyer expressly warrants that he/she is in compliance with all applicable, State, and Local laws and regulations regarding the purchase, ownership, and use of the item. It shall be the buyers responsibility to comply with all Federal, State and Local laws governing the sales of any items listed, illustrated or sold. The buyer expressly agrees to indemnify and hold harmless Rough Country, LLC for all claims resulting directly or indirectly from the purchase, ownership, or use of the items.



