

Cat-Back, 2004-07 Hemi Charger/Magnum/300C
(Loudmouth/Loudmouth II)

PACKING LIST

Before installation, use this check list to make sure all necessary parts have been included.

ITEM	QTY	CHECK	PART NUMBER	DESCRIPTION
1.	1	<input type="checkbox"/>	310570100	X-Pipe, Charger, 2006
2.	1	<input type="checkbox"/>	310570101	Tailpipe, D-Side, Charger, 2006
3.	1	<input type="checkbox"/>	310570102	Tailpipe, P-Side, Charger, 2006
4.	8	<input type="checkbox"/>	308144380	Clamps, Torca, 2.5"
5.	2	<input type="checkbox"/>	M31039	Tip, 3.5" Polished, Slash Cut Dual Wall
6.	2	<input type="checkbox"/>	310013818	Muffler, Bullet, GTO/Mustang/Charger
			Or 310013919	Or Resonator, Bullet, GTO/Mustang/Charger
7.		<input type="checkbox"/>	*****	Instructions

WARNING: SLP Recommends allowing the vehicle to cool (not running) for five hours before beginning installation.

INSTALLATION INSTRUCTIONS - #D31000/D31001

- 1 Raise and fully support the vehicle (a vehicle lift is recommended).
- 2 Loosen the two band clamps on the stock cat-back as shown below.

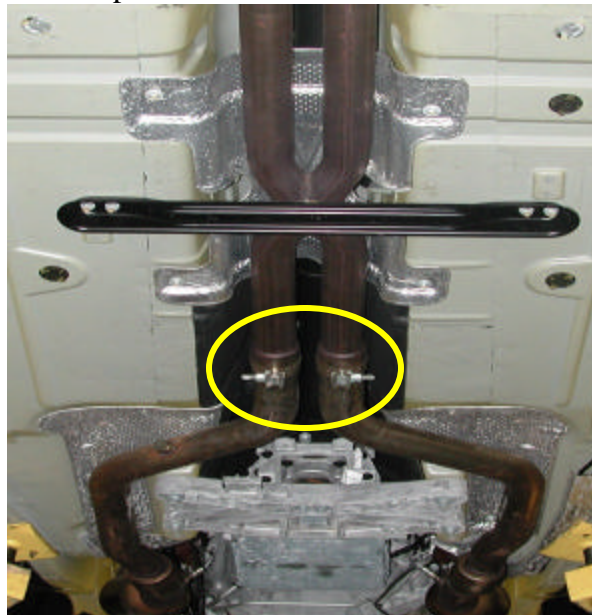


PHOTO 1

- 3 Next remove the two nuts with springs attached on the driver's side stock muffler assembly. See photo 2 below.

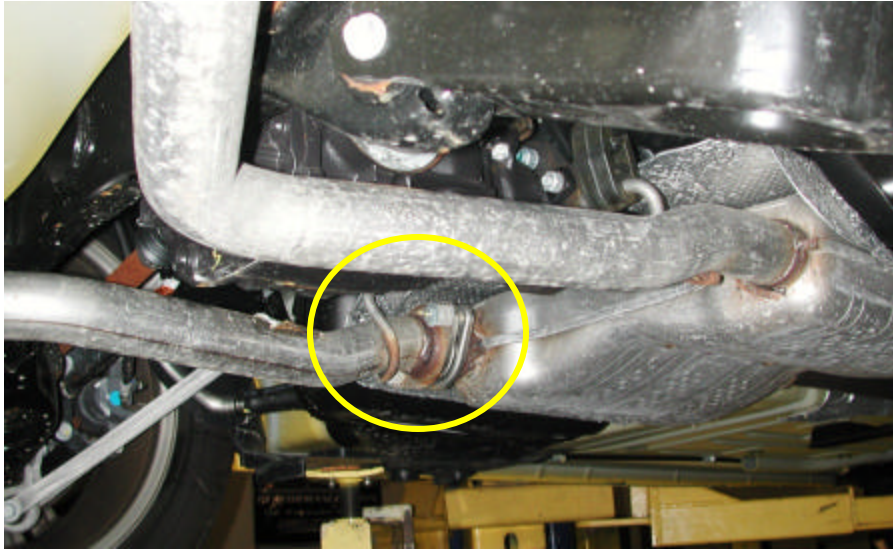


PHOTO 2

- 4 Carefully remove the rear driver's side muffler assembly from the vehicle by sliding the rubber isolators off the hangers attached to the assembly.
- 5 Next, with the aid of a helper remove the remaining stock exhaust system as one piece. Removing all remaining rubber isolators from the stock exhaust system and carefully sliding the exhaust off of the stock CAT down-pipes.
- 6 Next install two 2 1/2" torca clamps onto the outlet of the new SLP X-Pipe.
- 7 Slide the SLP X-pipe onto the outlets of the stock CAT down-pipes. See photo 3 below.

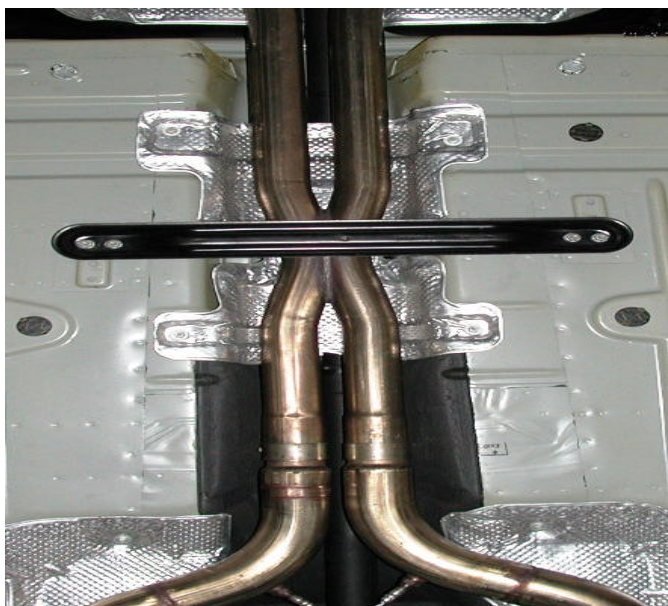


PHOTO 3

- 8 Next install the new SLP resonators or bullet mufflers onto the outlet of the SLP X-Pipe using two of the supplies 2.5" torca clamps.
- 9 Next install the SLP driver's side and passenger's side tailpipe onto the outlet of the X-Pipe. Hang the pipes using the stock rubber isolators as shown in photos 4,5 and 6 below and on the following page.



PHOTO 4

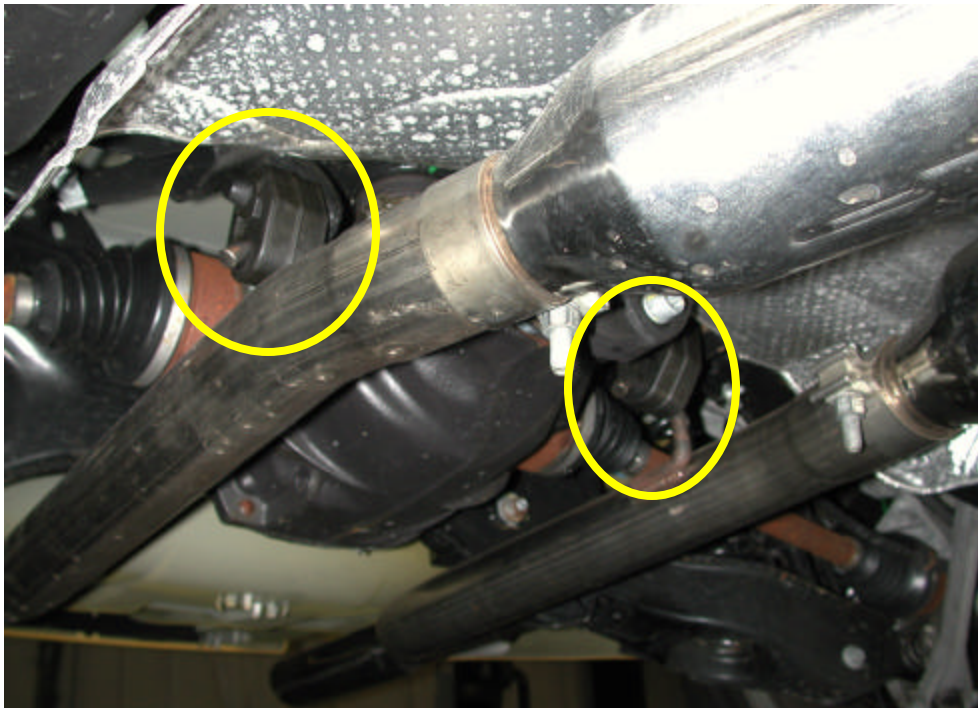


PHOTO 5



PHOTO 6

- 10 Next, install a 2.5” band clamp onto the out let of each tail pipe and install each tip.
- 11 Adjust the system from front to rear making sure all exhaust components are clear and free of contact to any wiring or body parts.
- 12 The installation is now complete! ENJOY!

Dear SLP Enthusiast,

SLP LoudMouth Exhaust Systems DO include a muffler. While it does not "look" like the traditional muffler, it is indeed a muffler by definition.

The muffler (aka resonator - actually a misnomer or ill-understood word) was designed by SLP to smooth the exhaust gas pulsations by methods of wave rarefaction to make them as inaudible / quiet as possible. This is a type of reflection muffler; Most people are much more familiar with more common 'absorption type mufflers', which typically include internal perforations, sections, and/or absorption insulation.

More simply put, a muffler exists and was designed with intent to reduce exhaust noise.

The Specialty Equipment Manufacturers Association (SEMA - www.sema.org) has staff dedicated to representing the aftermarket industry in regulation/legislation pertaining to aftermarket parts. SEMA is an excellent source for further information and/or news and updates regarding the latest laws governing aftermarket parts.

The SLP Loud Mouth exhaust system is **50 state, emissions legal**. It will not adversely effect emissions. Every local jurisdiction creates and enforces their own laws regarding '**noise**'. Local jurisdictions have the ability to write more detailed and stringent laws regarding noise - but commonly do not outlaw 'replacement exhaust systems'; Unless they have their own specific design criteria for a 'muffler', which specifically excludes reflection type mufflers, the Loud Mouth would typically be acceptable. Only actual laboratory decibel measurements are a fair measurement of a muffler's effectiveness to quiet exhaust and should be required and completed to judge an exhaust system. Most jurisdictions do not have the ability to measure noise levels accurately. The testing is very subjective if not properly and accurately completed.

Due to the nearly infinite number of local jurisdictions, 'related noise regulations/laws', and their high frequency of change, SLP does not participate and/or represent customers, companies, shops, technicians, or sellers in any litigation, traffic or legal matter regarding or related to the legality of an SLP exhaust system and disclaims any responsibility. It is solely the responsibility of the customer to investigate and verify whether or not SLP products are legal for use. SLP recommends checking local legislature for specific laws regarding the legality of aftermarket exhaust systems.

SLP Performance Parts