



S&B PERFORMANCE FILTERS & INTAKE KITS

INSTALLATION INSTRUCTIONS

S&B P/N 75-5013-1

**2006-2007 Chevrolet/GMC
Silverado/Sierra 6.6L
Duramax Diesel "LBZ"**

* Kit may not fit vehicles with
body lift installed.

QTY PARTS LIST

- 1 (L) Intake Tube
- 1 (A) Air Box
- 1 (E) Air Box Adapter
- 1 (O) Clear Lid
- 2 (D) 5/16-18 SS Screw
- 1 (I) Hump coupler
- 1 (K) Step coupler
- 1 (B) S&B Air Filter

QTY PARTS LIST

- 2 (J) # 72 Hose Clamp
- 3 (H) # 80 Hose Clamp
- 1 (F) Gasket—round
- 2 (G) rubber spacer
- 2 (S) 8/32 screws
- 4 (N) 10/24 SS Screws
- 4 (M) 10/24 SS Concave Washer
- 1 (R) Rubber Well Nut
- 1 (P) 3/8 x 1-1/2" Bolt
- 1 (Q) 3/8 Washer

TOOLS REQUIRED

- 10mm Wrench
- Phillips head screwdriver
- 5/16" Nut Driver or
Flat Blade Screwdriver
- 9/16 Socket or Wrench
- T-20 Torx Wrench
(supplied)

1. With the ignition switched off, disconnect the negative battery cable from both batteries.

2. Disconnect the electrical connection at the MAF sensor in the OE air box tube.



3. Loosen both hose clamps and remove the OE intake tube from the vehicle.



4. Pull up on the OE air box to remove it from the vehicle, there are 2 press in prongs that go into rubber grommets on the bottom side.



5. Make sure that the OE grommets are still in place in the OE air box tray.



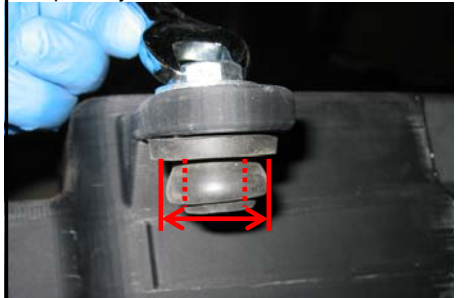
6. Remove the plastic shield from behind the headlight by prying the push locks loose.



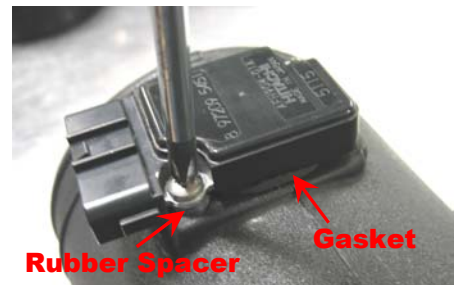
7. Place S&B air filter (B) inside S&B air box (A), then attach the filter adapter (E) with the 5/16 screws (D). Secure the filter with the #80 hose clamp (C).



8. Insert the 3/8" bolt (P), and 3/8 washer (Q) through the air box mounting arm and into the Well Nut (R). Tighten the well nut until it expands to the size of the hole located in the core support between the fender and the hood bumper/ adjuster.



9. Peel off the backing from the round Gasket (F), adhere to the Intake tube. Insert the 8/32 screws thru the MAF then place the 8/32 rubber spacer over the screws. Place the MAF into the S&B tube and secure. **Do Not Over Tighten!**



10. Remove the hood bumper on the passenger side, Install the S&B air box (A), guiding the prongs into grommets at the bottom and the well nut (R) into the core support hole at the top. **Note:** measure the bumper height before removal.



INSTALLATION INSTRUCTIONS (continued)

11. Push down on the air box and tighten the 3/8" bolt (P) to expand the well nut (R) larger than the hole to secure the S&B air box (A).



16. Re-install the hood bumper and adjust to the proper height. Use measurement from step #10.



12. Place S&B hump adapter (I) along with # 80 hose clamps over the S&B intake tube (L), slide on until just even with tube end.



17. Install the S&B clear lid (O), secure with the 10/24 screws (N) and concave rubber footed washers (M). Do not over tighten.



13. Install the step adapter (K) to the opposite end of the S&B tube (L) as shown, secure loosely with # 72 hose clamp (J).



18. Reconnect the batteries. Inspect your installation, make sure kit is properly positioned and all fasteners are tight.

14. Install the S&B tube (L) onto the turbo inlet, then secure the #72 hose clamps (V). Then center the hump adapter (I) over the gap between the tube end and box adapter, secure the # 80 hose clamps (H).



15. Reconnect MAF sensor electrical connection.



PERFORMANCE TESTING

- * Engage parking brake and start your engine. Listen for abnormal noises. If an air leak is detected, re-inspect hoses and connections as they may need to be repositioned and tightened.
- * S&B FILTERS RECOMMENDS THAT YOU KEEP YOUR OEM INTAKE SYSTEM IN THE EVENT IT IS REQUIRED IN THE FUTURE.
- * In order to maintain your warranty, all connections and components must be checked periodically for alignment and for proper tension on all connections. Failure to do so will void your warranty.
- * Use only S&B Filter cleaning and oil products to service your filter. Using any other brand oil and or cleaners may void your warranty.

PRECISION CLEANING & OILING KIT



Part No. 88-0005

Order online today at www.sbfilters.com
or through your local S&B Distributor

75-5013-1



**S&B PERFORMANCE
FILTERS & INTAKE KITS**

ARM BOLT ASSEMBLY

