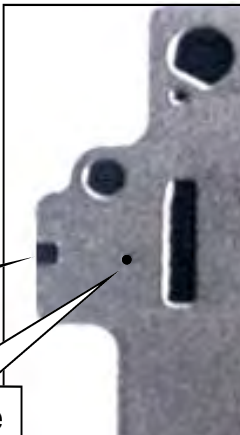


4 Land type



Small Slot

Small Hole

Switch Valves

3 Land type



Big Slot

No Hole

Match New Plate, actual size picture.

Seven check balls:

Six .250

One .343

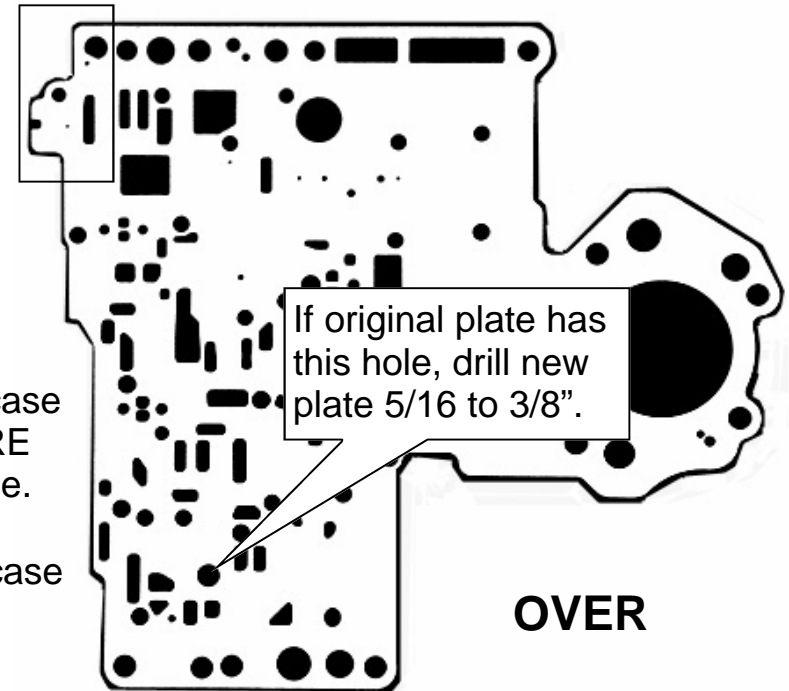
**Listen up:** Valve bodies are often swapped and some year models used both types. If you don't like waiting for parts start with 5 plates. One of each and an extra 95B.

**TF-PLT-94B:** 1988-94 Small case 500, 42RH/RE, 44RH/RE WITHOUT lockup boost tube.

**TF-PLT-94S:** 1988-97 Big case 518-618, 46 and 47 RH & RE WITHOUT lockup boost tube.

**TF-PLT-95S:** Small case 500, 42RH and 44RE.

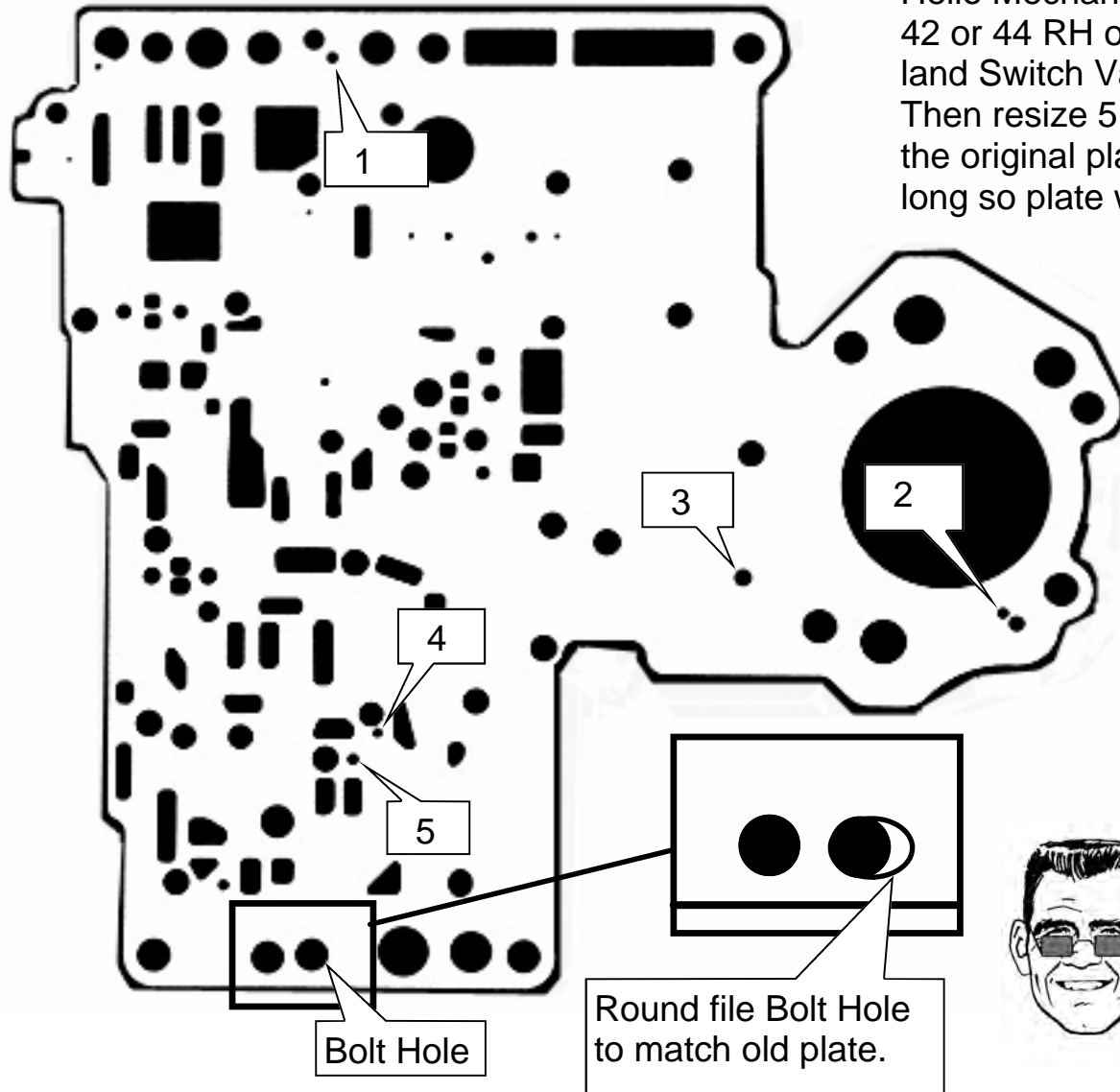
**TF-PLT-95B:** 1993-02 Big case WITH lockup boost tube.



OVER



Hello Mechanic: If you have a 92 to 94 500, 42 or 44 RH or RE (Small Case) with a four land Switch Valve, order Plate TF-PLT-95B. Then resize 5 feed holes at arrows to match the original plate. Then file one bolt hole oblong so plate will fit small case trans.



**TF-GOV-SOL: Solenoid Kit.**

Fixes 8: 5 minutes or less each at the cost of less than one new one. You'll Love it!!



Pretty cool stuff.