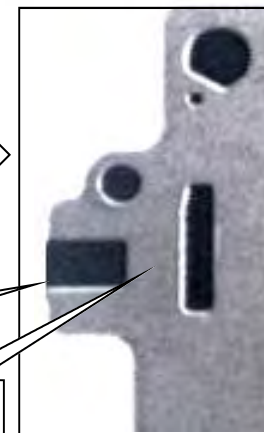




Small Slot
Small Hole

Switch Valves



Big Slot
No Hole

Match New Plate, actual size picture.

Seven check balls:
Six .250 
One .343 

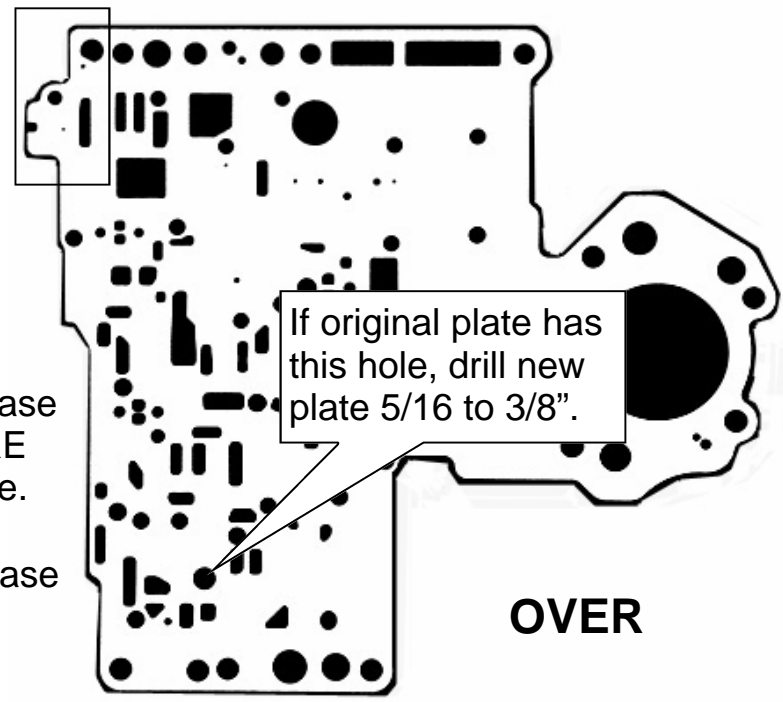
Listen up: Valve bodies are often swapped and some year models used both types. If you don't like waiting for parts start with 5 plates. One of each and an extra 95B.

TF-PLT-94B: 1988-94 Small case 500, 42RH/RE, 44RH/RE WITHOUT lockup boost tube.

TF-PLT-94S: 1988-97 Big case 518-618, 46 and 47 RH & RE WITHOUT lockup boost tube.

TF-PLT-95S: Small case 500, 42RH and 44RE.

TF-PLT-95B: 1993-02 Big case WITH lockup boost tube.

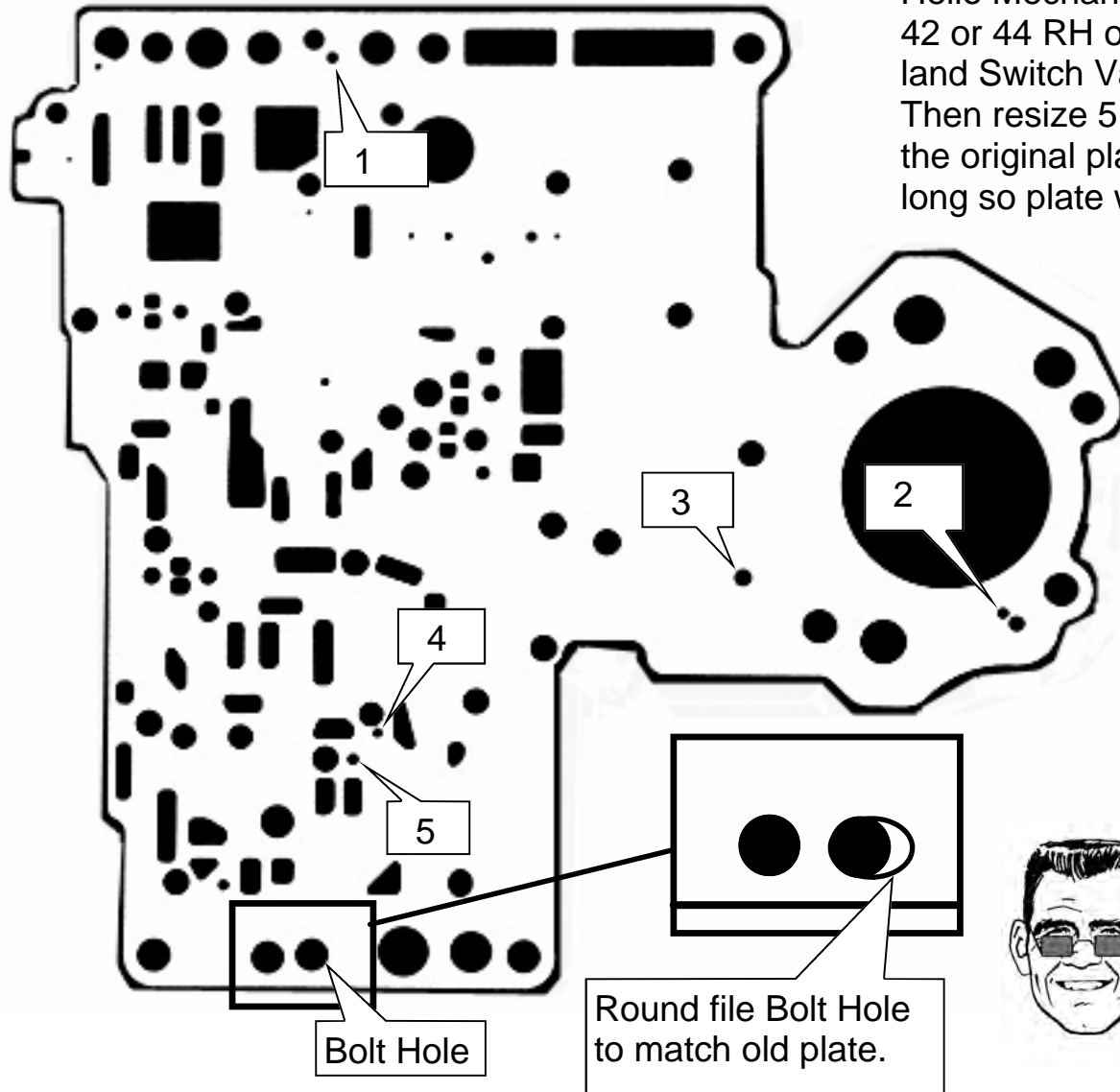


If original plate has this hole, drill new plate 5/16 to 3/8".

OVER



Hello Mechanic: If you have a 92 to 94 500, 42 or 44 RH or RE (Small Case) with a four land Switch Valve, order Plate TF-PLT-95B. Then resize 5 feed holes at arrows to match the original plate. Then file one bolt hole oblong so plate will fit small case trans.



TF-GOV-SOL: Solenoid Kit.

Fixes 8: 5 minutes or less each at the cost of less than one new one. You'll Love it!!



Pretty cool stuff.