

FLAMING RIVER *Tilt Steering Column Instruction Sheet*

PLEASE READ BEFORE YOU BEGIN TO INSTALL COLUMN

Flaming River all new parts pledge.

The best in the business and a three-year warranty.

The Flaming River tilt steering column comes complete with stainless steel dress-up kit which includes: turn signal arm and knob with Phillips screw, tilt lever and knob, hazard knob with screw, and steering wheel hold-down nut. Horn wire not included. Flaming River also has a full range of steering column accessories including steering wheels, custom wheel adapters, floor mounts, and column drops for 2" and 1-3/4" column tube diameter.

Your Flaming River tilt steering column comes with the following

Qty.	Description
1	Steering Column
1	Wire harness, with GM 4 1/4" male connector
1	Cancelling cam and compression spring
1	Steering wheel hold-down nut
1	Dress-up kit

Steering Column Installation Tips

- *Be sure the column you have selected is the proper length before you begin installation.*
- **DO NOT** activate the column "tilt" mechanism before installation. *This can cause injury, or damage to the column.*
- *You MUST install a neutral safety switch, on all automatic transmissions. Your vehicle will start in gear, without it!*
- *The end of the Flaming River column is a 1" DD hollow shaft and Flaming River has a complete line of universal joints and shafts available to complete your steering installation after the column is installed in your vehicle.*

Steering Column Installation

1. Determine floor mount you intend to use and dash board clamp or column drop. (Flaming River Catalog page number 4)
2. Position floor mount to the bottom of the steering column do not fully tighten until the column is in the final position.
3. Install column in vehicle and install dash clamp or column drop in order to hold the column in place. Next readjust floor mount to fit snug to the floor and make final adjustments to the column before tightening all clamps.
4. Install turn signal arm and knob use screw provided 3/4" phillips. Next install tilt arm and knob. Third, install hazard knob using screw provided.
5. Connect 4 1/4" GM male plug to your vehicle wiring harness. This will activate your turn signals and hazard lights.

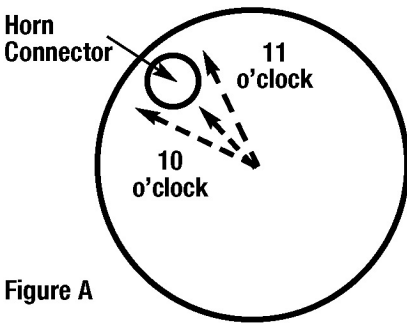


Figure A

Installing the Steering Wheel

The spline on your new Flaming River steering column is a GM spline designed for 69 to present steering wheels (without airbag). The horn wire for the cancelling cam to the horn button is not furnished with your column. This part is usually furnished with your steering wheel. See catalog page 4 and 5 for wheel adapters and steering accessories.

1. Position cancelling cam as shown in figure A, between 10 and 11 o'clock. Compression spring is positioned over column spline shaft.
2. Place steering wheel or wheel adapter on steering column spline shaft, screw nut on column shaft, and begin tightening, drawing down wheel or adapter to the desired gap. (**Do not over-torque**)
3. Install horn spring clip and horn button assembly.

Gear Shift Arm Installation - Applies to Column Shift Only

Enclosed is your Shift Arm, spring and pin. Follow the instruction below for proper installation of the shift arm, **Note:** This step should be completed before the column is installed in the vehicle.

1. Grease spring and insert it into the casting hole. Care must be taken not to drop the spring into the casting, grease and a small screw driver may help here.

See Fig. 1

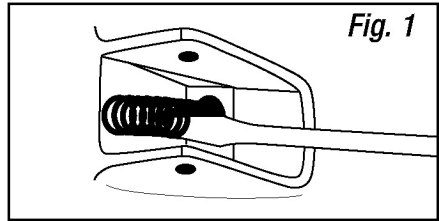


Fig. 1

2. Position arm into casting so the pin hole in the arm is in relation with the pin hole in the casting.

See Fig. 2

3. Grease the smooth end of the pin and start it into the casting pin hole.
4. Using a hammer and drift, gently tap pin into the casting until it is flush. (Do Not Use Excessive Force- which may damage the casting)

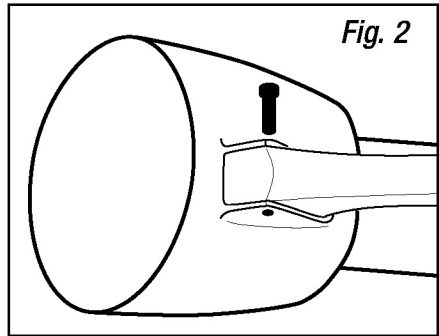


Fig. 2

Tilt Steering Column Operating Tips

Flaming River Tilt Column is designed to have 5 tilt positions. To operate the column, once it is in the vehicle. Place your right hand, at 12 o'clock, on the steering wheel, and push forward, gentle, to relieve the tension of the spring-loaded tilt column lock. And your left hand on the tilt arm, pull the arm towards you, and locate your position.

IMPORTANT SAFETY NOTE: You **MUST** install a neutral safety switch, on all automatic transmissions. Your vehicle will start in gear, without it!

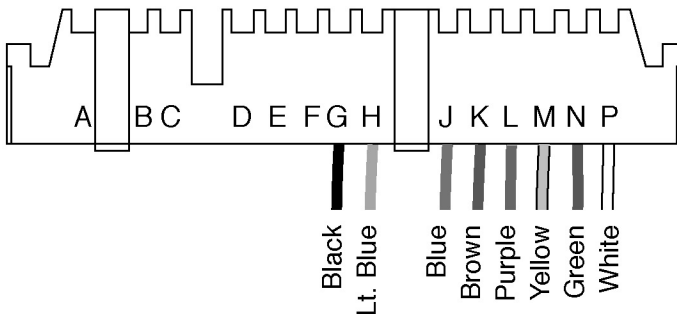
Refer to page 2 of the Flaming River catalog - FR2001NS.

For transmission mount use part number FR20111NS

**Please call our Technical Dept. for further information if needed
at 1-800-648-8022
or e-mail us at flamin10@aol.com**

The wiring included with your Flaming River column is a GM 4 1/4" connector. The standard GM wiring diagram for this plug is:

Letter	Wire Color	Function
<i>G</i>	<i>Black</i>	<i>Horn</i>
<i>H</i>	<i>Lt. Blue</i>	<i>Left Front Turn Signal</i>
<i>J</i>	<i>Blue</i>	<i>Right Front Turn Signal</i>
<i>K</i>	<i>Brown</i>	<i>Hazard</i>
<i>L</i>	<i>Purple</i>	<i>Turn Signal - Power (main)</i>
<i>M</i>	<i>Yellow</i>	<i>Left Rear Turn Signal</i>
<i>N</i>	<i>Green</i>	<i>Right Rear Turn Signal</i>
<i>P</i>	<i>White</i>	<i>Brake Light</i>
	<i>Gray</i>	<i>Column Shift only- illuminated gearshift indicator is connected to dash lights</i>



Note: If your vehicle (female plug) is not the correct size you can purchase FR20118 plug adapter kit. Vehicles without flasher can purchase FR20118-1 flasher kit. Both can be found on page 8 & 9 of the Flaming River catalog.

IMPORTANT NOTE:

**Do Not Tilt Column Without A Steering Wheel In Place:
It Is Spring Loaded!**

**Additional parts maybe necessary, for your particular application.
Please call our Technical Dept. for further information on
accessories at 1-800-648-8022
or e-mail us at flamin10@aol.com**