



Steeda **HARDCORE S550 Mustang Differential Brackets**

Installation Instructions for Part #: 555-4050



1. Support the car on a lift or jack stands.
2. Unbolt one of the front bolts from the differential.
3. Slide the side brackets into the slot in the subframe, as shown in Figure 1.
NOTE: If used in conjunction with the Steeda IRS braces, the threaded plates will need to be removed as these brackets replace them.
4. Using the provided washers and M12 12.9 bolts, loosely secure the side brackets to the subframe. See Figure 1 for correct order of install. The smaller washer fills the void in the subframe.
NOTE: If used in conjunction with the Steeda IRS Braces, the large washer is not needed.
5. Manuever the top bracket into place
6. Using the provided M14 10.9 bolts, misalignment washers, and nuts, bolt the upper portion of the top bracket to the subframe. Tighten until snug. See Figure 2 for reference.
NOTE: The misalignment washers flat side needs to face the bracket/subframe and the angled side needs to face and be parallel to



Figure 1: Correct order of install for bolt and washers

the nut/bolt head. It may help to lower the front of the subframe by removing the subframe support brackets and loosening the front subframe bolts.

7. Using the provided M14 12.9 bolt in place of the factory bolt removed in step 2, loosely secure the brackets to the differential ear.
NOTE: If used in conjunction with the Steeda THRU Threaded Differential Bolts, follow those install instructions now then return to these instructions.
8. Repeat steps 2-4 and 7 for the oppsite side bracket.
9. Torque the lower M14 bolts installed in step 7 to 129 lb-ft.
10. Tighten any other installed hardware that was not done previously. The two top bolts in the subframe with misalignment spacers should be torqued to 35 lb-ft.

This is a hardcore race part. NVH will be increased when installing this part.

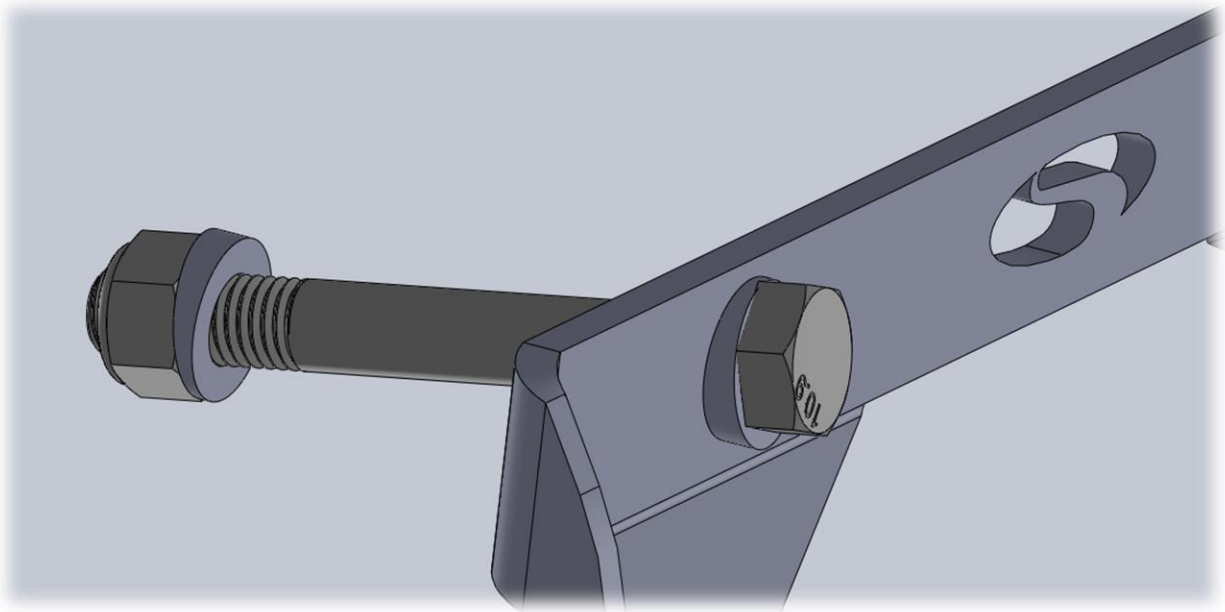


Figure 2: Top bracket upper bolting configuration