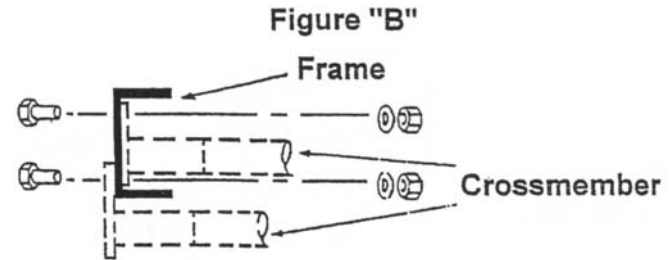
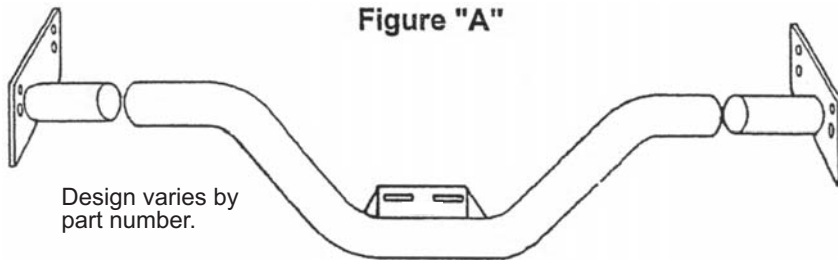




PART# w/ Pad	PART# w/o Pad	
4558	4538	- Straight Universal Crossmember
4559	4539	- 3" DROP Universal Crossmember
9424	9444	- 6" DROP Universal Crossmember
6538	6558	- Straight 700R4, 4L60E & T56
6559	6539	- 3" DROP 700R4, 4L60E & T56
6544	6524	- 6" DROP 700R4, 4L60E & T56

INSTALLATION INSTRUCTIONS FOR UNIVERSAL TRANSMISSION CROSSMEMBERS

1. Designed to fit in "open channel" frames.
2. Minimum measurement between rails is 26" Maximum measurement is 36".
3. Because the mount is universal, portions of the center tube may need to be trimmed so that when the end caps are installed, the crossmember will fit the width of the frame rails precisely.
4. If your crossmember did not include a pad or you need a replacement, GM, mopar, auto and manual transmissions, use Trans-Dapt #9442 rubber steel pad. For Ford transmissions use Trans-Dapt #4716 rubber steel pad (sold separately).
5. Crossmember may be mounted to inside or outside of the frame rails (See Figure B), as determined by individual application. Use Loctite thread locker on all bolts.



12438 Putnam Street • Whittier, CA 90602 tel (562) 921-0404 • fax (562) 921-7515
website: www.tdperformance.com • email: techsupport@tdperformance.com