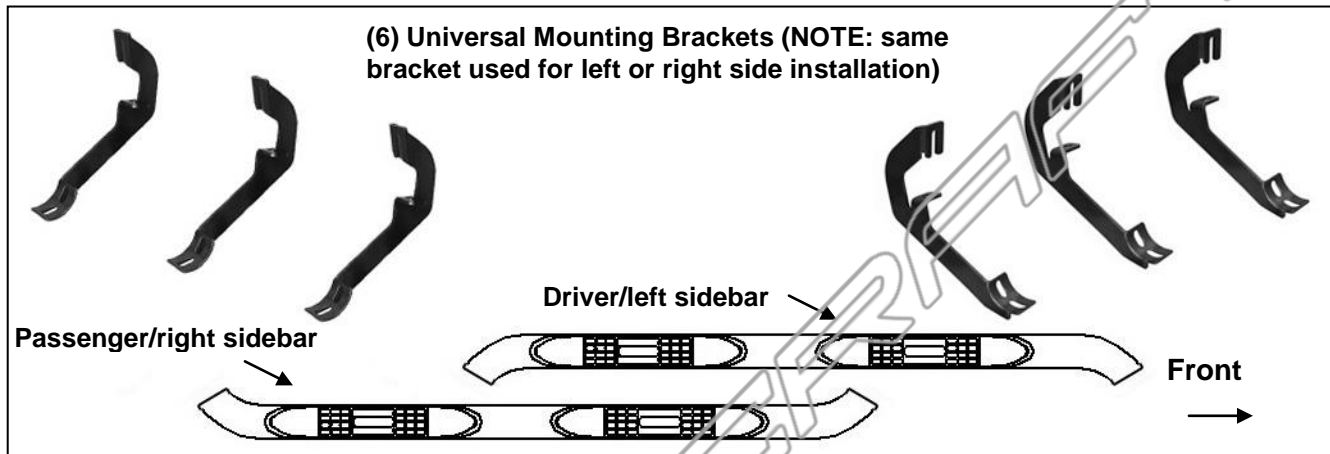


**3" SIDEBARS  
ROCKER PANEL MOUNT**

**2014 1500 SILVERADO/SIERRA DOUBLE (EXTENDED) CAB**

**PARTS LIST:**

Qty	Description	Qty	Description
1	Driver/Left Sidebar	12	8-1.25mm Clip-On Nuts
1	Passenger/Right Sidebar	24	8-1.25mm x 25mm Hex Bolts
6	Brackets	24	8mm Lock Washers
		24	8mm x 24mm x 2mm Flat Washers



**PROCEDURE:**

**REMOVE CONTENTS FROM BOX. VERIFY ALL PARTS ARE PRESENT. READ INSTALLATION INSTRUCTIONS CAREFULLY BEFORE STARTING INSTALLATION.**

- Start the installation under the driver side of the vehicle. Locate the 1st, 2nd and 4th mounting tabs along the bottom edge of the body, **(Figure 1)**. If necessary, hold the driver side Sidebar up in place to help determine the correct mounting holes to use along the bottom of the body.  
**Vehicles with flat tab, no threaded hole:** Select (1) 8mm Clip Nut. Slide the Clip Nut over the first tab with the nut facing up behind the tab, **(Figure 1)**. Line up threaded nut with hole in tab.  
**Vehicles with factory installed threaded insert in tab:** Thread hex bolt into threaded insert from the backside-down to clear paint as required.
- Locate the inner mounting location on the back of the rocker panel directly above the flat tab in **Step 1**.  
**Vehicles without threaded hole:** Remove the rubber plug from the larger hole, **(Figure 2)**. Select (1) 8mm Clip Nut. Slide the Clip Nut into the larger hole. Line up the threaded nut with the smaller hole, **(Figure 3)**.  
**Vehicles with factory installed threaded insert:** Thread 8mm Hex Bolt into threaded insert to clear paint as required. Use a small amount of oil if necessary, **(Figure 1)**.
- Select (1) Mounting Bracket. **NOTE:** Brackets are universal and will fit left or right side. Bolt the Mounting Bracket to the Clip Nuts and/or the factory threaded holes with (2) 8mm Hex Bolts, (2) 8mm Lock Washers and (2) 8mm Flat Washers, **(Figure 4)**. Snug but do not fully tighten the hardware.
- Repeat **Steps 1 – 3** for all Bracket installations.
- Carefully position the Driver Sidebar onto the (3) Mounting Brackets. Attach the Sidebar to the Mounting Brackets with (6) 8mm x 25mm Hex Bolts, (6) 8mm Lock Washers and (6) 8mm Flat Washers, **(Figures 4)**. Do not tighten hardware at this time.
- Level and adjust the Sidebar and tighten all hardware.
- Repeat **Steps 2 – 6** for passenger Sidebar installation.
- Do periodic inspections to the installation to make sure that all hardware is secure and tight.

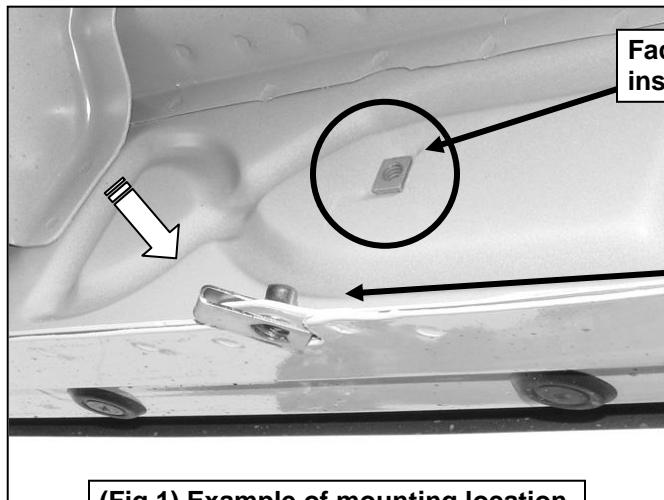
**To protect your investment,** wax this product after installing. Regular waxing is recommended to add a protective layer over the finish. Do not use any type of polish or wax that may contain abrasives that could damage the finish.

**For stainless steel:** Aluminum polish may be used to polish small scratches and scuffs on the finish. Mild soap may be used also to clean the Sidebar.

**For gloss black finishes:** Mild soap may be used to clean the Sidebar.

**3" SIDEBARS  
ROCKER PANEL MOUNT**

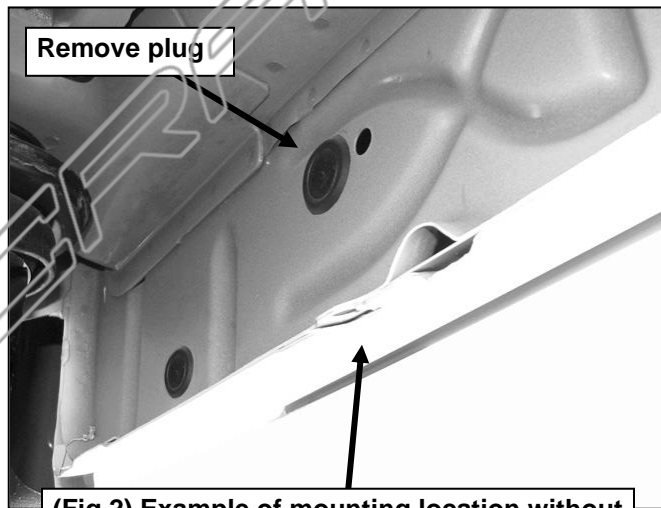
**2014 1500 SILVERADO/SIERRA DOUBLE (EXTENDED) CAB  
Driver Side Installation Pictured**



Factory 8mm threaded insert in body panel

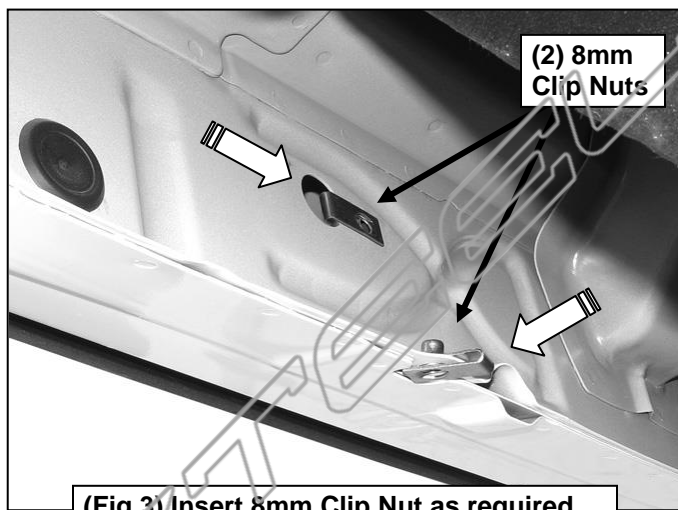
Use 8mm Clip Nut or factory threaded insert if equipped

**(Fig 1) Example of mounting location with factory threaded hole**



Remove plug

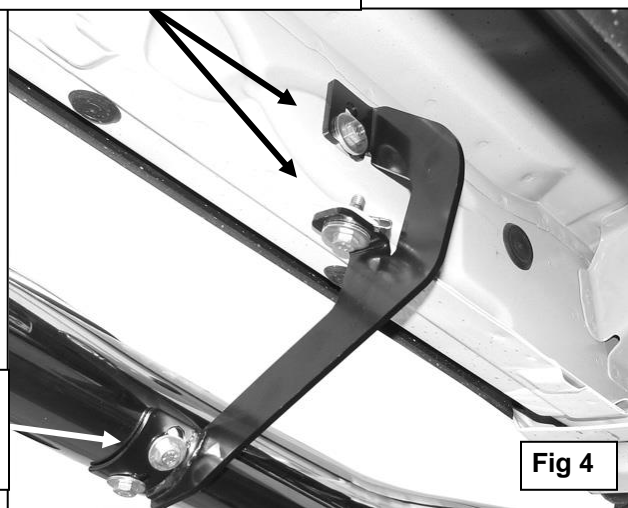
**(Fig 2) Example of mounting location without factory threaded hole in rocker panel**



(2) 8mm Clip Nuts

**(Fig 3) Insert 8mm Clip Nut as required**

(2) 8mm x 25mm Hex Bolts  
(2) 8mm Lock Washers  
(2) 8mm Flat Washers



**Fig 4**

(2) 8mm x 25mm Hex Bolts  
(2) 8mm Lock Washers  
(2) 8mm Flat Washers