



SIGNATURE OF QUALITY

AUTOMOTIVE PRODUCTS, INC.

INSTRUCTIONS—INSTRUCCIONES—CONSIGNES

E-SERIES BULL BAR

APPLICATION: 2007-2015 CHEVY SILVERADO 1500 & GMC SIERRA 1500

APPLICATION PART # 31-5980, 31-5985

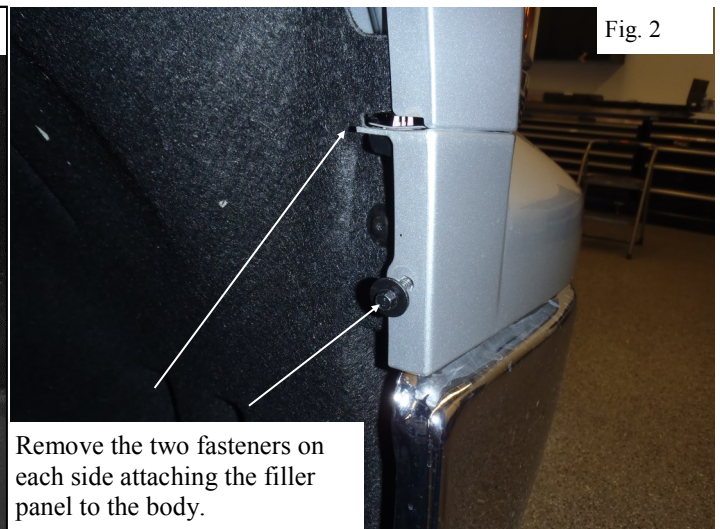
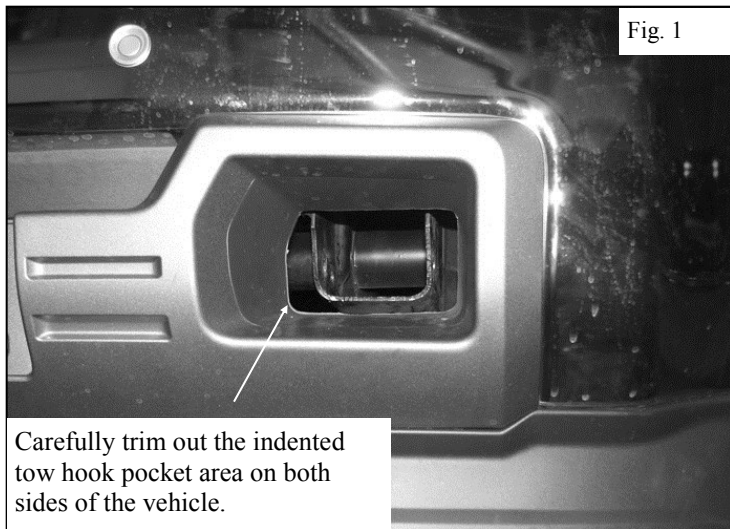
APPLICATION: 2016-2017 CHEVY SILVERADO 1500 & GMC SIERRA 1500

APPLICATION PART # 31-6010, 31-6015

ITEM	QUANTITY	DESCRIPTION	TOOLS NEEDED
1	1	BULL BAR WITH SKID PLATE	RATCHET
2,3	2	BULL BAR MOUNTING BRACKETS (DRV. & PASS.)	SCREWDRIVER
4	2	M12 DOUBLE BOLT PLATE	TORQUE WRENCH
5	2	M12 SINGLE BOLT PLATE	UTILITY KNIFE
6	4	M10 BELLVILLE WASHERS (STAINLESS)	ALLEN WRENCH
7	6	M12 FLANGE NUTS (YELLOW ZINC)	18MM SOCKET
8	4	M10 BUTTON HEAD BOLTS (STAINLESS)	10MM SOCKET
9	4	M10 FLANGE NUTS (STAINLESS)	16MM WRENCH

ANTI-SEIZE LUBRICANT MUST BE USED ON ALL STAINLESS STEEL FASTENERS TO PREVENT THREAD DAMAGE AND GALLING

1. Remove contents from box, verify if all parts listed are present and free from damage. Carefully read and understand all instructions before attempting installation.
2. If the vehicle is not equipped with factory tow hooks; carefully trim out the indented tow hook pocket area with a utility knife (Figure 1) then skip to step 7.
3. If the vehicle is equipped with factory tow hooks; remove the filler panel from the front of the vehicle (Figures 2 - 4).



Westin Automotive Products, Inc.
320 Covina Blvd
San Dimas, Ca. 91773

Thank You for choosing Westin products
For Additional installation assistance please call
Customer service (800) 793-7846
www.westinautomotive.com

Working from beneath the vehicle use a flathead screwdriver to pop loose the plastic tabs retaining the filler panel to the grille.

Fig. 3



Once all fasteners have been removed and the tabs are popped loose carefully pull the filler panel off of the vehicle.

Fig. 4



4. Remove the front bumper assembly (Figures 5 & 6).

5. Remove the factory tow hooks and foam tow hook covers (Figures 7 & 8). They will not be re-used.

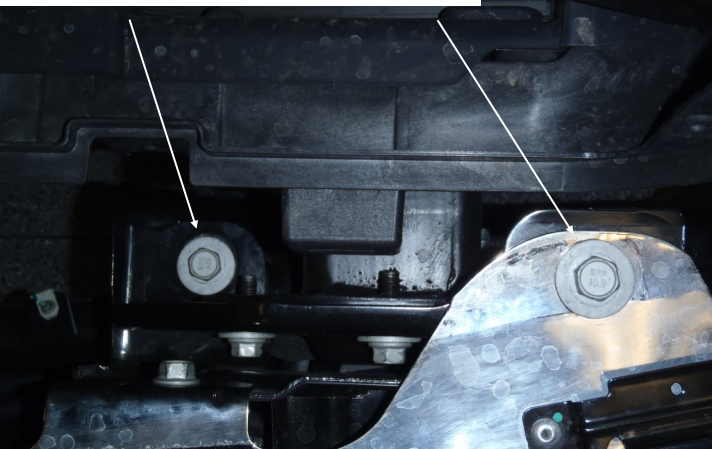
Remove this M10 bolt from each side of the bumper (Driver side shown).

Fig. 5



Remove these M12 bolts from each side of the bumper (Driver side shown).

Fig. 6



Loosen the (3) bumper bracket bolts on the Driver Side only.

Fig. 7

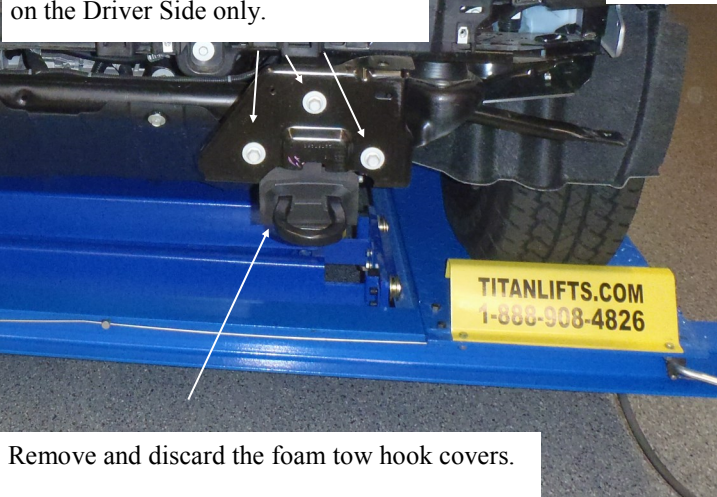
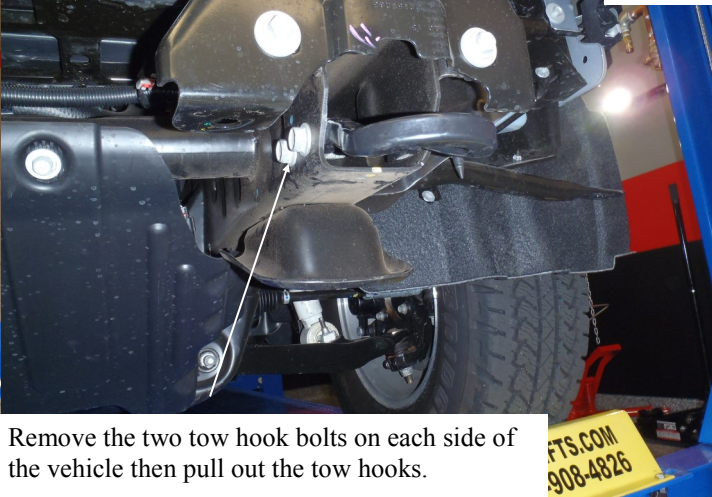


Fig. 8



Remove and discard the foam tow hook covers.

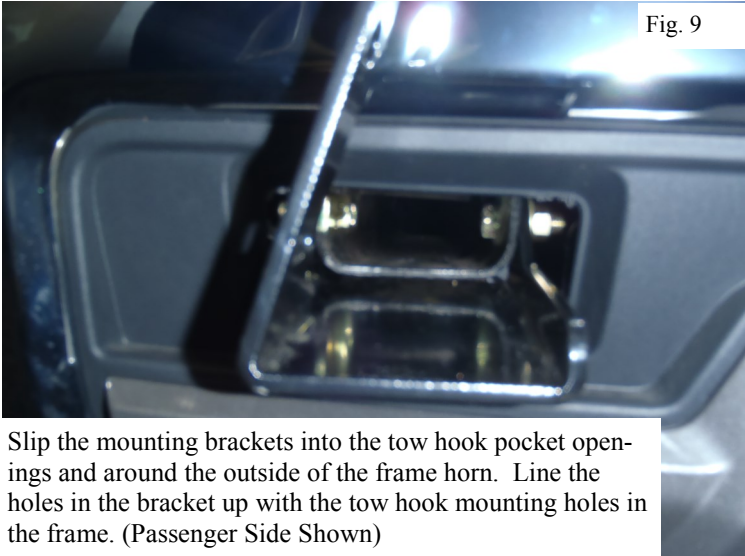
Remove the two tow hook bolts on each side of the vehicle then pull out the tow hooks.



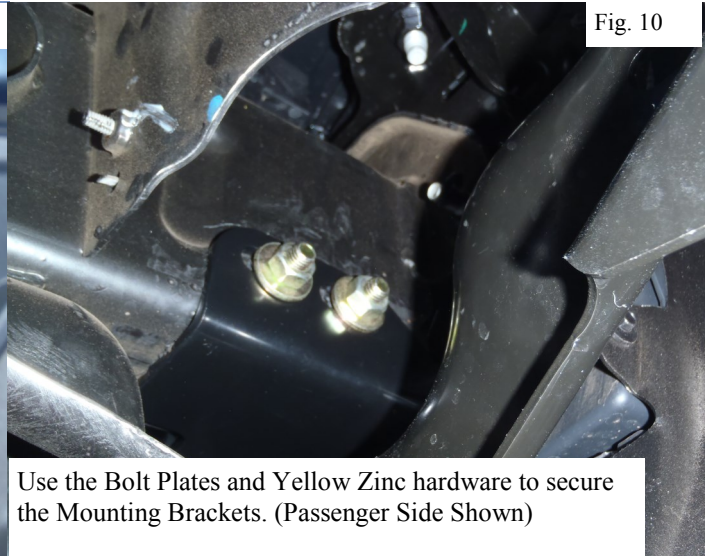
Westin Automotive Products, Inc.
320 Covina Blvd
San Dimas, Ca. 91773

Thank You for choosing Westin products
For Additional installation assistance please call
Customer service (800) 793-7846
www.westinautomotive.com

6. Re-install the bumper and filler panel in the reverse order that they were removed.
7. Select the Mounting Brackets. Insert the Bracket through the opening in the plastic bumper, (Figure 9). Line up the (3) holes in the Bracket with the holes in the end of the frame channel.
8. Select the 12mm Double Bolt Plate. Insert the Bolt Plate into the end of the frame channel, through the holes in the Bracket and out the side of the frame. Secure the Bolt Plate to the Brackets with (2) M12 flange Nuts. Leave loose at this time. Repeat this step to install the 12mm Single Bolt Plate, into the remaining hole in the side of the Bracket and frame channel, (Figure 10).



Slip the mounting brackets into the tow hook pocket openings and around the outside of the frame horn. Line the holes in the bracket up with the tow hook mounting holes in the frame. (Passenger Side Shown)

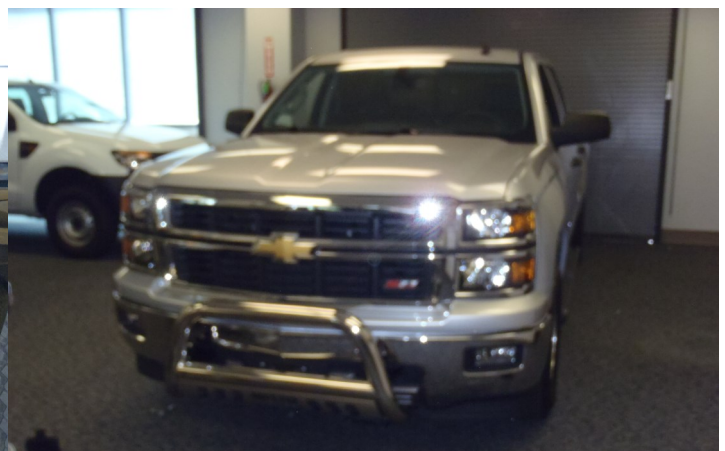


Use the Bolt Plates and Yellow Zinc hardware to secure the Mounting Brackets. (Passenger Side Shown)

9. Loosely install the Bull Bar to each mounting bracket using (4) M10 Button Head Bolts, (4) M10 Bellville Washers, (4) M10 Flange Nuts on each side (Figure 11).
10. Align and adjust the Bull Bar and Mounting Brackets as desired. Tighten and torque Yellow Zinc M12 hardware to 60—65 ft-lbs. Tighten and torque M10 Stainless hardware to 25—30 ft-lbs.



Attach the Bull Bar to the Brackets using M10 S/S hardware.



INSTALLATION COMPLETE

CARE INSTRUCTIONS

- REGULAR WAXING IS RECOMMENDED. DO NOT USE ANY TYPE OF POLISH OR WAX THAT MAY CONTAIN ABRASIVES
- STAINLESS STEEL PRODUCTS CAN BE CLEANED WITH MILD SOAP AND WATER. STAINLESS STEEL POLISH SHOULD BE USED TO POLISH SMALL SCRATCHES.
- GLOSS BLACK FINISHES SHOULD BE CLEANED WITH MILD SOAP AND WATER



Westin Automotive Products, Inc.
320 Covina Blvd
San Dimas, Ca. 91773

Thank You for choosing Westin products
For Additional installation assistance please call
Customer service (800) 793-7846
www.westinautomotive.com

Westin

SIGNATURE OF QUALITY

AUTOMOTIVE PRODUCTS, INC.



WARNING



Failure to follow these instructions could lead to death, personal injury, and / or property damage.

FASTENERS:

All Westin supplied fasteners must be utilized and installed in accordance with the installation instructions and apply torque to the specifications as defined. **DOUBLE CHECK ALL FASTENERS BEFORE INITIAL USE, AND PERIODICALLY IN THE FUTURE TO ENSURE PROPER FUNCTION AND SAFETY.**

DRILLING:

Most Westin products do not require drilling for installation. If drilling is defined as required, use caution when drilling a vehicle. **FAILURE TO REVIEW AN AREA TO BE DRILLED MAY RESULT IN PERSONAL INJURY AND/OR INJURY TO OTHERS AS WELL AS VEHICLE DAMAGE.**

EYE PROTECTION:

ALWAYS WEAR SAFETY GLASSES OR GOGGLES DURING THE INSTALLATION PROCESS TO AVOID PERSONAL INJURY.

MAXIMUM TOWING/CARRYING CAPACITY:

The Westin Receiver Hitches will have a visible tow rating label affixed directly on the product. User should never exceed the vehicle manufacturers maximum tow and weight rating regardless of the capacity of the hitch. **FAILURE TO FOLLOW THESE GUIDELINES WILL VOID THE WESTIN WARRANTY AND MAY RESULT IN PERSONAL INJURY AND/OR INJURY TO OTHERS AS WELL AS VEHICLE DAMAGE.**

Westin
SIGNATURE OF QUALITY

Westin Automotive Products, Inc.
320 Covina Blvd
San Dimas, Ca. 91773