



SIGNATURE OF QUALITY

AUTOMOTIVE PRODUCTS, INC.

# INSTALLATION INSTRUCTIONS

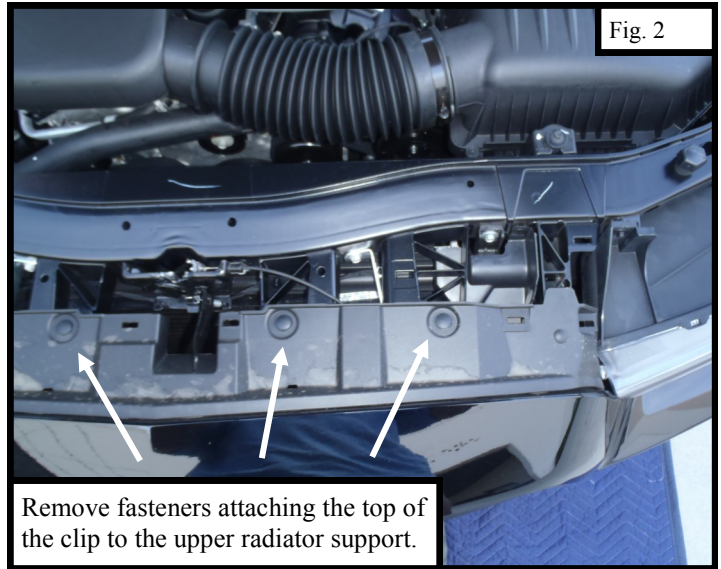
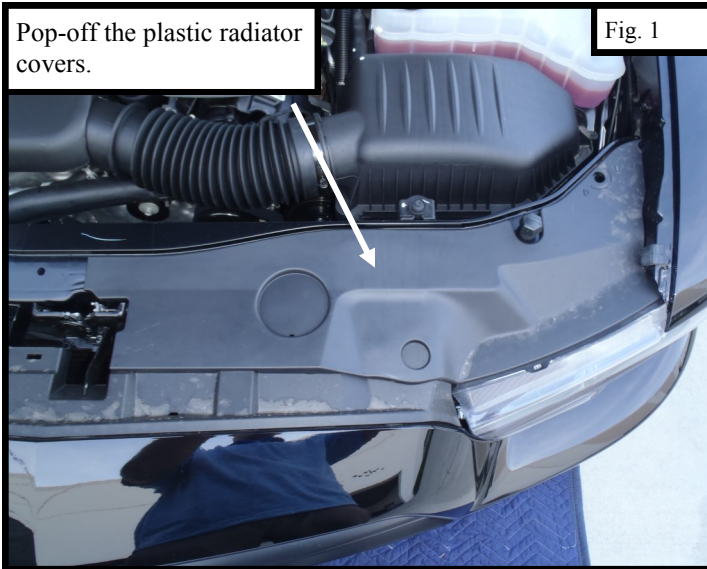
APPLICATION: DODGE CHARGER POLICE PUSH BAR (2011 & UP)  
APP PART # 36-2035

ITEM	QUANTITY	DESCRIPTION	TOOLS NEEDED
1	1	PUSH BAR ASSEMBLY	RATCHET
2,3	2	MOUNTING BRACKETS (DRV & PASS)	SCREWDRIVER
4,5	2	CLAMP BRACKETS (DRV & PASS)	14MM SOCKET
6	2	UPPER SUPPORT TUBE	ALLEN WRENCH
7	6	M10 CUPPED WASHER (STAINLESS STEEL)	15MM SOCKET
8	6	M10 FLANGE NUT (STAINLESS STEEL)	16MM SOCKET
9	6	M10 HEX SOCKET BUTTON HEAD SCREW (STAINLESS STEEL)	10MM SOCKET
10	2	M10 LONG HEX BOLT (BLACK ZINC)	7MM SOCKET
11	2	M10 FLAT WASHER (STAINLESS STEEL)	RATCHET EXT.
12	2	M10 LOCK WASHER (STAINLESS STEEL)	TORQUE WRENCH
13	8	M10 FLANGE BOLT (YELLOW ZINC)	UTILITY KNIFE
14	8	M10 FLANGE NUT (YELLOW ZINC)	TRANSFER PUNCH
			HOLE SAW

## ANTI-SEIZE LUBRICANT MUST BE USED ON ALL STAINLESS STEEL FASTENERS TO PREVENT THREAD DAMAGE AND GALLING PROCEDURE

1. Remove contents from box, verify if all parts listed are present and free from damage. Carefully read and understand all instructions before attempting installation.
2. Remove the entire front grille and fascia (referred to as front clip) from the front of the vehicle. There are a number of plastic fasteners and metal screws holding it on. Care should be taken not to damage the clip as it is removed (**Figures 1-6**).

**NOTE:** For 2015 models, there are additional fasteners hidden underneath the inner fender which can be accessed by reaching in between the plastic inner fender and outer fender. Refer to **Figure 7**.



Westin Automotive Products, Inc.  
320 Covina Blvd  
San Dimas, Ca. 91773

Thank You for choosing Westin products  
For Additional installation assistance please call  
Customer service (800) 793-7846  
www.westinautomotive.com

Remove the plastic fasteners holding the inner fender to the front clip.

Fig. 3

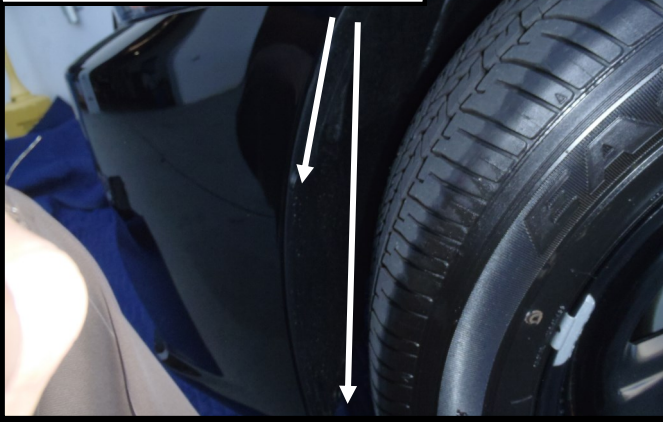
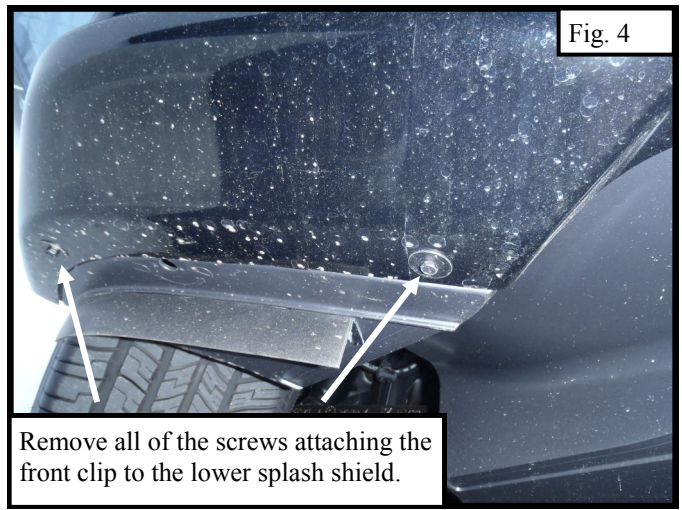
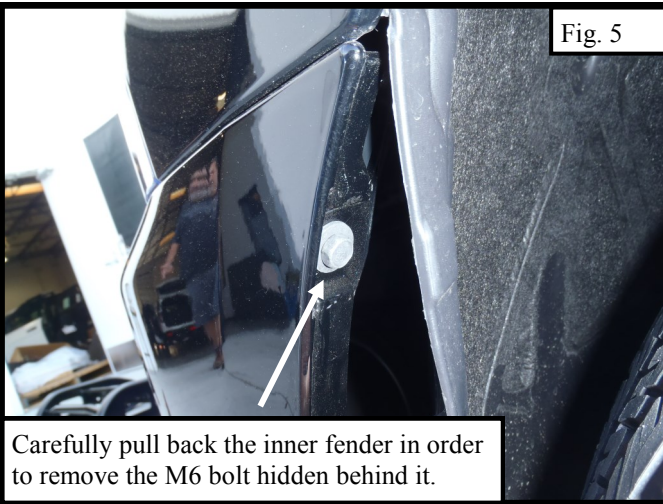


Fig. 4



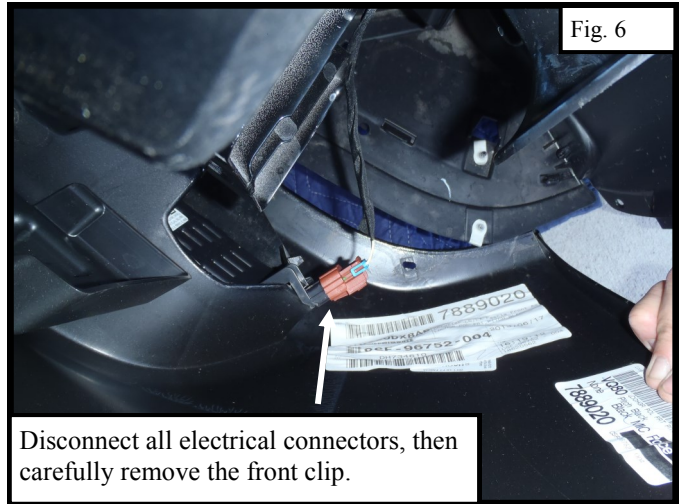
Remove all of the screws attaching the front clip to the lower splash shield.

Fig. 5



Carefully pull back the inner fender in order to remove the M6 bolt hidden behind it.

Fig. 6



Disconnect all electrical connectors, then carefully remove the front clip.

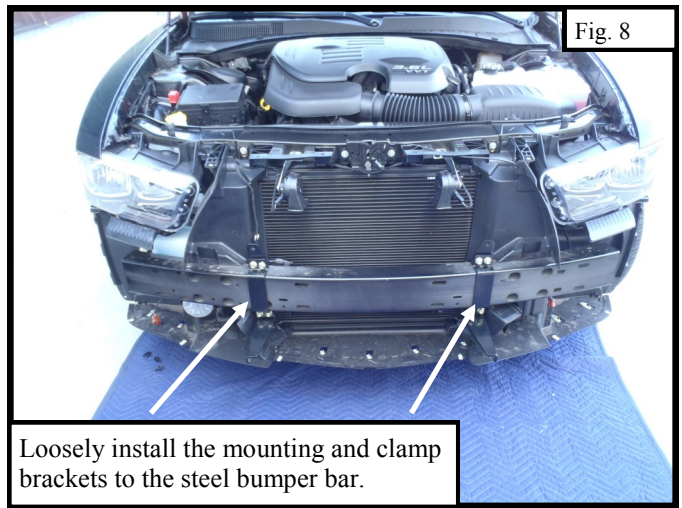
3. Once the front clip has been removed, loosely attach the mounting brackets and clamp the brackets to the exposed steel bumper bar using the M10 yellow zinc plated flange nuts and bolts (**FIG 8**).
4. Center the brackets, then adjust them to 26-1/4" to 26-5/16" apart. Tighten and torque the M10 hardware to 30-35 ft-lbs (**FIG 9**).
5. Trim the plastic bumper channel and lower grille insert as necessary then re-install the front clip on the vehicle in the opposite order that it was removed (**FIG 10**).

Removal of additional fasteners inside fender

Fig. 7



Fig. 8



Loosely install the mounting and clamp brackets to the steel bumper bar.

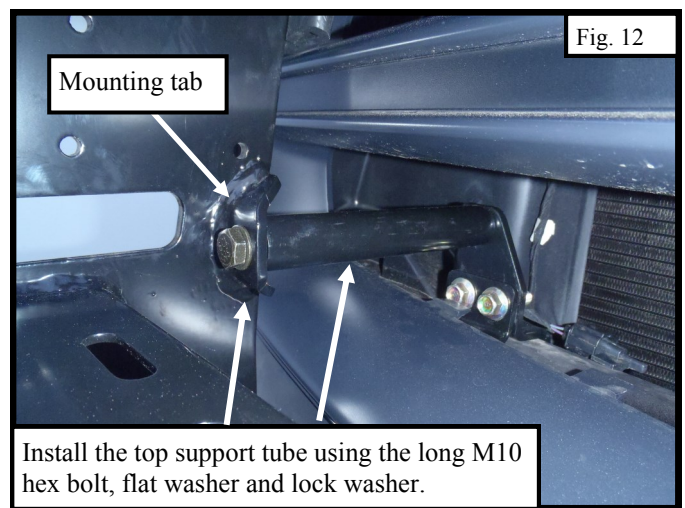
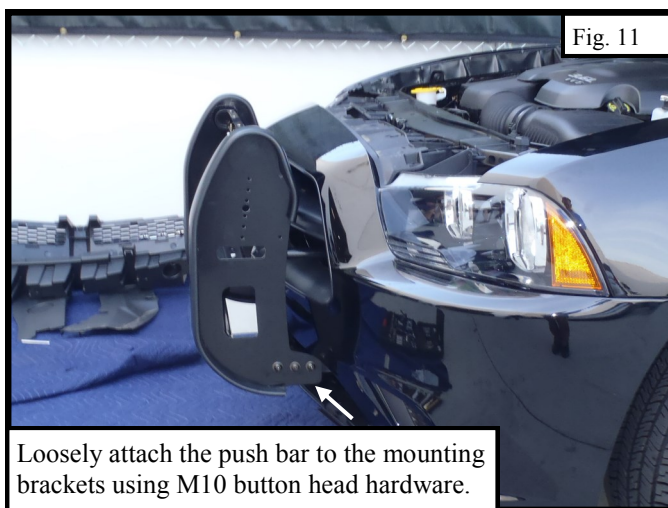
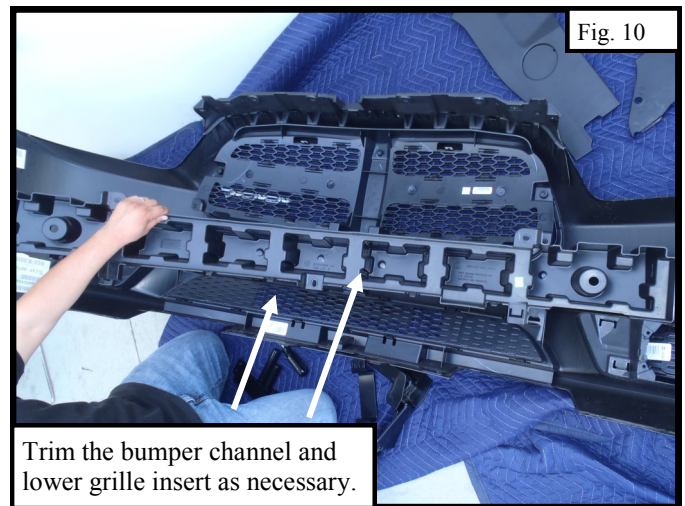
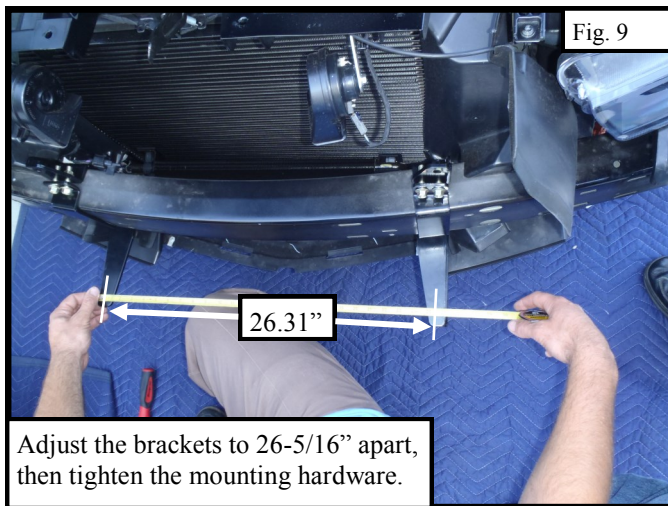


Westin Automotive Products, Inc.  
320 Covina Blvd  
San Dimas, Ca. 91773

Thank You for choosing Westin products  
For Additional installation assistance please call  
Customer service (800) 793-7846  
www.westinautomotive.com



6. Loosely attach the push bar to the mounting brackets using the M10 button head bolts, cupped washers and black flange nuts (**FIG 11**). Refer to **Figure 15** for a picture showing the complete assembly of the push bar mounted on the steel bumper bar.
7.
  - A. **(2011-2014 Models)** Trim the upper grille insert as necessary in order to slip the upper support tube in between the push bar and the top of the mounting brackets. Use the long M10 hex bolts, flat washers, and lock washers to secure the push bar to the mounting brackets (**FIG 12**).
  - B. **(2015 Models)** Refer to **Figure 13 and 14** for a picture showing the location of the hole cut outs on the front fascia of the vehicle to allow installation of the upper support tubes. **NOTE: With the help of an assistant, make sure the push bar is held in place to avoid misalignment when carrying out the cut outs.** Starting on the drivers side, identify the mounting tab on the push bar shown in **Figure 12**. Insert a transfer punch through the mounting tab to precisely locate the center of the hole that will be cut. Using a hole saw, carefully cut the hole pictured in **Figure 14**. Repeat for passenger side. Once the holes have been cut out, insert the upper support tubes between the push bar and the top of the mounting brackets. Secure the push bar to the mounting brackets using the long M10 hex bolts, flat washers, and lock washers.
8. Align and adjust the push bar as necessary. Tighten and torque all remaining M10 fasteners to 30-35 ft-lbs.

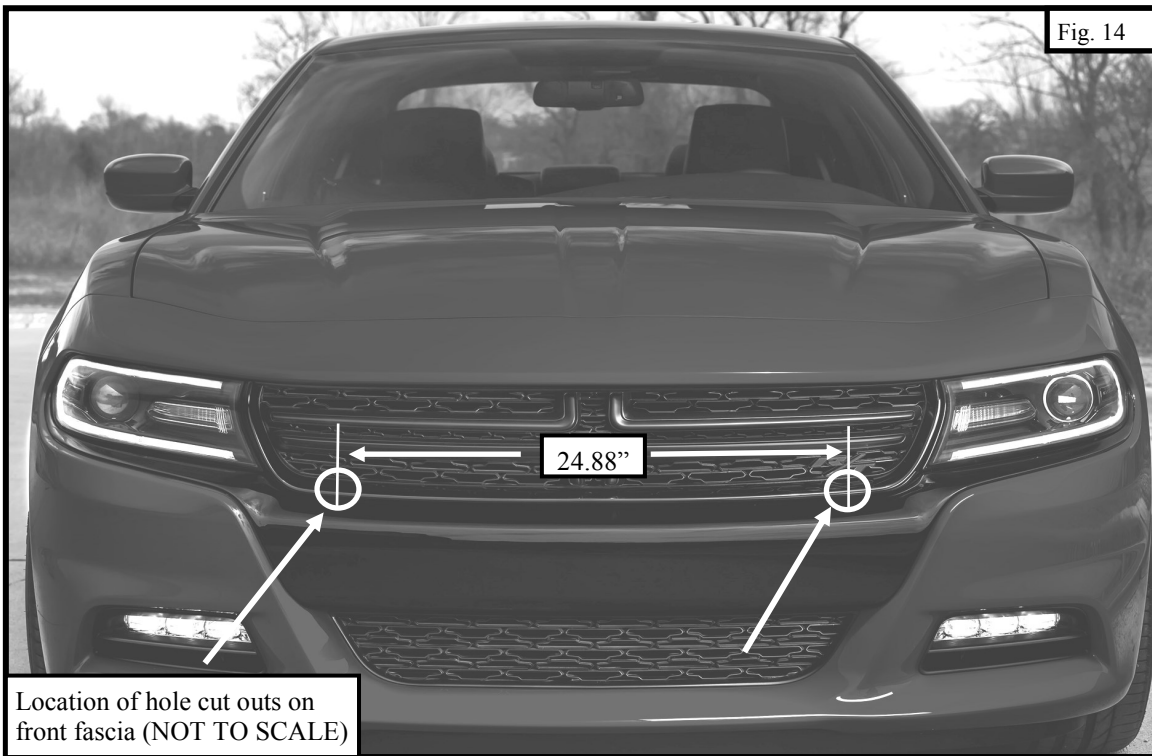


Westin Automotive Products, Inc.  
320 Covina Blvd  
San Dimas, Ca. 91773

Thank You for choosing Westin products  
For Additional installation assistance please call  
Customer service (800) 793-7846  
www.westinautomotive.com

Location of upper support tubes  
**NOTE:** Plastic grille removed for clarity.

Fig. 13



Location of hole cut outs on  
front fascia (NOT TO SCALE)

Fig. 14

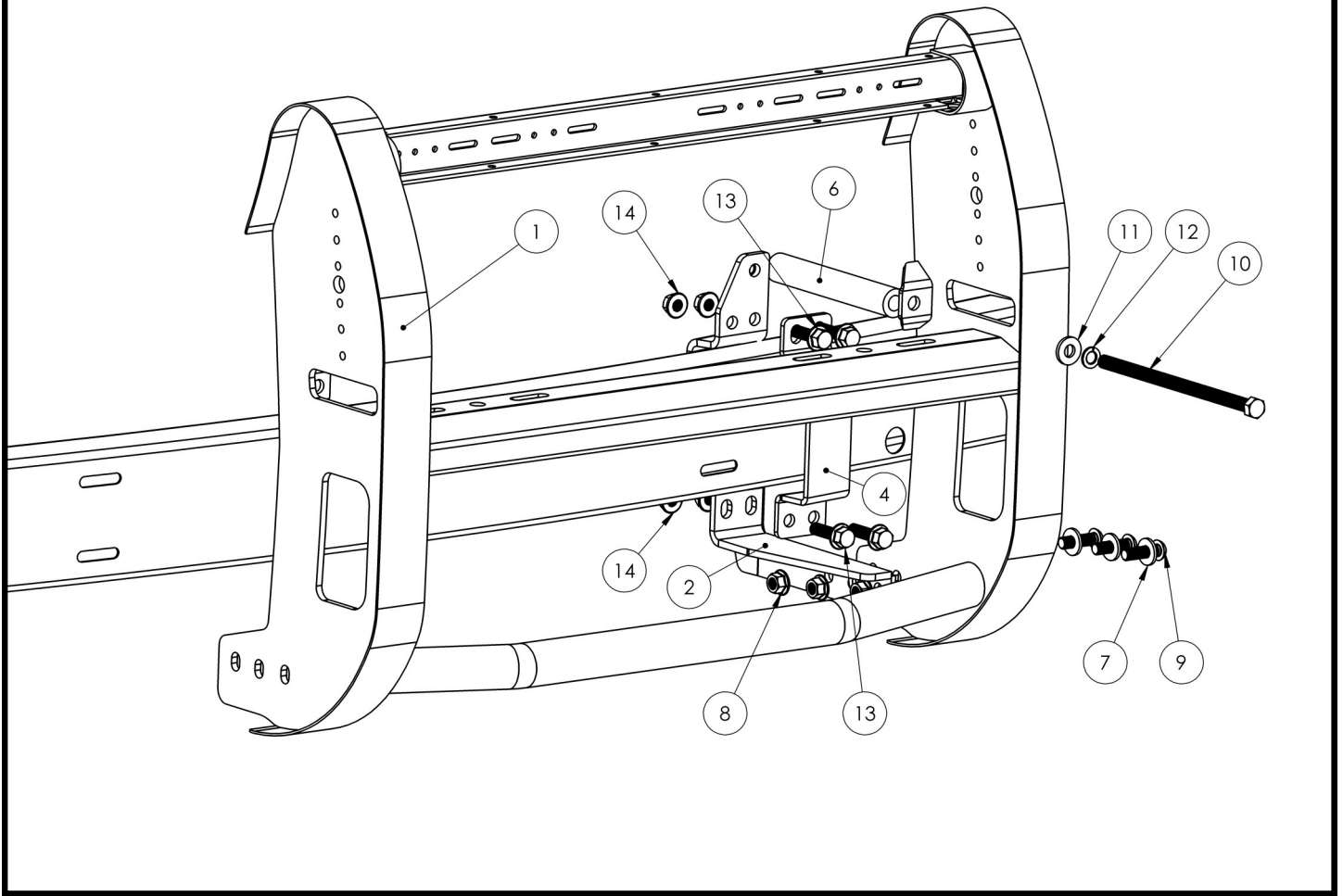


Westin Automotive Products, Inc.  
320 Covina Blvd  
San Dimas, Ca. 91773

Thank You for choosing Westin products  
For Additional installation assistance please call  
Customer service (800) 793-7846  
[www.westinautomotive.com](http://www.westinautomotive.com)

# Push bar assembly on steel bumper bar

Fig. 15



Westin Automotive Products, Inc.  
320 Covina Blvd  
San Dimas, Ca. 91773

Thank You for choosing Westin products  
For Additional installation assistance please call  
Customer service (800) 793-7846  
[www.westinautomotive.com](http://www.westinautomotive.com)





2011-2014 DODGE CHARGER SHOWN



2015 DODGE CHARGER SHOWN (PIT BAR AND WING WRAP SOLD SEPARATELY)

#### CARE INSTRUCTIONS

- REGULAR WAXING IS RECOMMENDED. DO NOT USE ANY TYPE OF POLISH OR WAX THAT MAY CONTAIN ABRASIVES.
- STAINLESS STEEL PRODUCTS CAN BE CLEANED WITH MILD SOAP AND WATER. STAINLESS STEEL POLISH SHOULD BE USED TO POLISH SMALL SCRATCHES.
- GLOSS BLACK FINISHES SHOULD BE CLEANED WITH MILD SOAP AND WATER.



Westin Automotive Products, Inc.  
320 Covina Blvd  
San Dimas, Ca. 91773

Thank You for choosing Westin products  
For Additional installation assistance please call  
Customer service (800) 793-7846  
[www.westinautomotive.com](http://www.westinautomotive.com)