

FLOWMASTER™

AMERICAN THUNDER™

System #17120

1964-72 El Camino/GMC Sprint

January 23, 2000

Installation Instructions

Removal:

- 1) Raise vehicle and support with jackstands.
- 2) Remove the existing exhaust system from the headers or manifold down pipes back.

Installation:

- 1) Bolt adapter plates #HA242 to hanger #'s HA240 and HA241 using the 5/16" x 3/4" bolts and nuts provided in the parts kit (**see figure 1**).
- 2) On the frame of the vehicle, slightly forward of the rear axle, there are a set of two mounting holes on each side of the vehicle which will be used to mount the rear muffler hangers. Use these stock locations to mount hanger #HA240 on the left side and hanger #HA241 on the right. Use the 5/16" x 1" bolts and nuts provided (**see figure 1**).
- 3) Place H-pipe assembly #16277 in its approximate position underneath the vehicle and support with a stand.
- 4) Connect the inlet of the mufflers to the rear of the H-pipe. Then place the outlets of the mufflers into the rear muffler hangers #HA240 and HA241, be sure that the mufflers are sitting level. Use jack stands to hold their position. The outlet of the muffler should be offset toward the outside of the vehicle.
- 5) Attach rubber hanger #HA168 and mounting bracket #238HA to the hanger rod on the left side tailpipe #16234. Repeat this on the right side tailpipe using rubber hanger #HA168 and mounting bracket #237HA.
- 6) Place the right tailpipe #16235 in position over the axle on the right side of the vehicle. Place the left tailpipe #16234 in position over the axle on the left side of the vehicle. When installing tailpipes, the rear of the vehicle must be supported by the frame with jack stands, allowing the axle to hang from the suspension. **NOTE:** The car should be supported by the axle after the tailpipes are in place.
- 7) Insert the tailpipes into the muffler outlets and adjust the mufflers and tailpipes into their approximate final position. Use stands to hold in position.

- 8) The front connector pipes are long enough to allow for many different header combinations, therefore, it is necessary to determine the proper length of the inlet connector pipes . Once the proper length is determined, trim the front connector pipes .
- 9) Once the pipes are cut to the proper length, raise them into position and connect them to the H-pipe and header collectors or manifold down pipes using a standard header flange or **FLOWMASTER ball flanges**.
- 10) Adjust the position of the mufflers and all pipes to provide the proper fit. Measure the distance from the side of the mufflers to the frame to be sure that everything is centered.
- 11) Two pair of holes will now need to be drilled in the frame for the rear tailpipe mounting brackets. With the tailpipes in the desired position, locate the mounting bracket against the frame, and use to mark the points to be drilled (**see figure 2**) (*Note: Take your time on this step -The brackets must be located in just the right position so that the tailpipes will be even.*) After marking, drop the pipes and hanger out of the way and drill with 3/16" bit. Re-locate pipes, and affix brackets to the frame with the 1/4" self tapping screws provided.
- 12) Make any final adjustments to the position of the mufflers and pipes before tightening down securely. Also at this point, apply the four push-on keepers to the rear tailpipe hangers. Be sure to allow adequate clearance for full suspension travel and vibration.

NOTE: WE HIGHLY RECOMMEND WELDING ALL SLIP-FIT CONNECTIONS

Packing List

<u>Qty.</u>	<u>Part # or Size</u>	<u>Part</u>
BOX 1 OF 2 (5015)		
2	52558	Muffler
BOX 2 OF 2 (1023)		
2	16293	Connector Pipe, (R/L)
1	16277	H- Pipe Assembly
1	16235	Tailpipe, Right
1	16234	Tailpipe, Left
1	PK355	Parts kit
6	MC250S	2 ½" Clamps
1	HA241	Muffler Hanger (R)
1	HA240	Muffler Hanger (L)
2	HA242	Adapter Plate (R/L)
1	237HA	Tailpipe Hanger (R)
1	238HA	Tailpipe Hanger (L)
2	HA168	Rubber Hanger
4	5/16" x 3/4"	Bolts
4	5/16" x 1"	Bolts
8	5/16"	Nuts
4	5/16"	Fender Washers
8	5/16"	Lock Washers
8	5/16"	Flat Washers
4	7/16"	Hanger keepers
4	1/4" x 1"	Self tapping screws
1	Instruction Sheet	

FIGURE 1

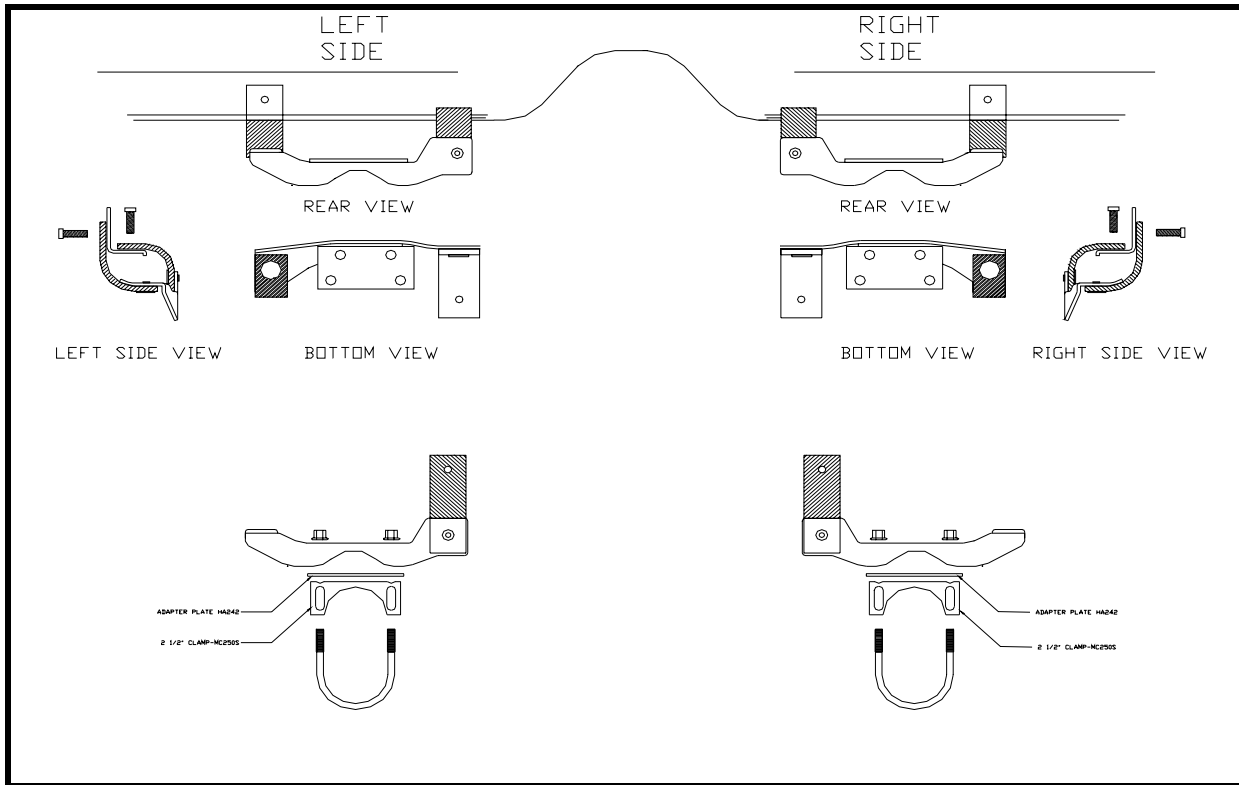
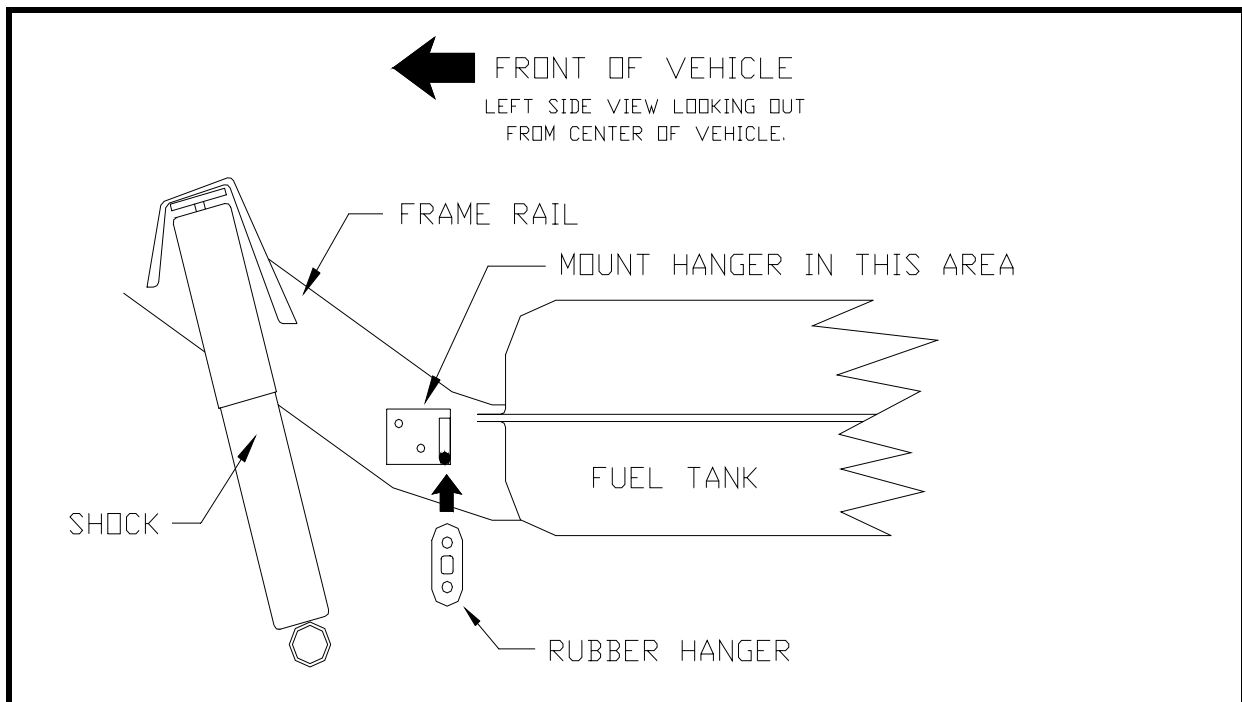


FIGURE 2



*FLOWMASTER AMERICAN THUNDER SYSTEM #17120
1964-72 EL CAMINO/SPRINT
(2½" UNIVERSAL KIT)*

